

For Lease

# 1,106 SF | Downtown Alpharetta Three Blocks from City Center

290 South Main Street, Suite 500  
Alpharetta, GA 30009



290 South Main St | Alpharetta

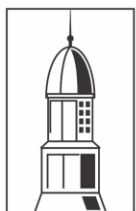
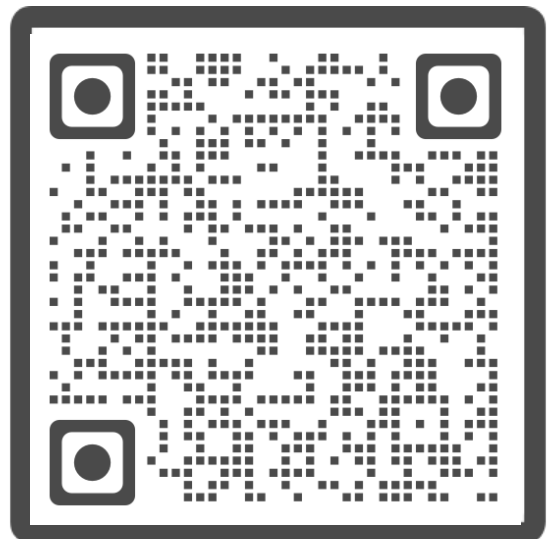
### Property Highlights:

- 1,106- Fully Renovated – First Generation Office Space
- Alpharetta Walking District – Start of the Alpha Loop
- Part of a 9 Acre 100+ Condominium Office Park
- Professional On-Site Property Management and Leasing
- 500+ On-Site Parking Spaces
- Less than 1 Mile from Avalon Development & GA 400

### Take the Virtual Tour of Typical Renovations:

<https://my.matterport.com/show/?m=Af6waPN2M4q>

<b>Property Type</b>	<b>Office</b>
Space	1,106 sq ft
Rent Type	Modified Gross
Term	3-5 Year



**COLONY PARK**

OFFICE CONDOMINIUMS

290 South Main St, Suite 500 • Alpharetta, GA 30009

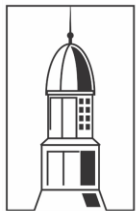
For Lease



Brand New Renovation
Private Reception
2-3 Private Offices / 1 Conference Room
Private Wet Bar and Private Bathroom



290 South Main St | Alpharetta



COLONY PARK

OFFICE CONDOMINIUMS

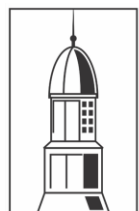
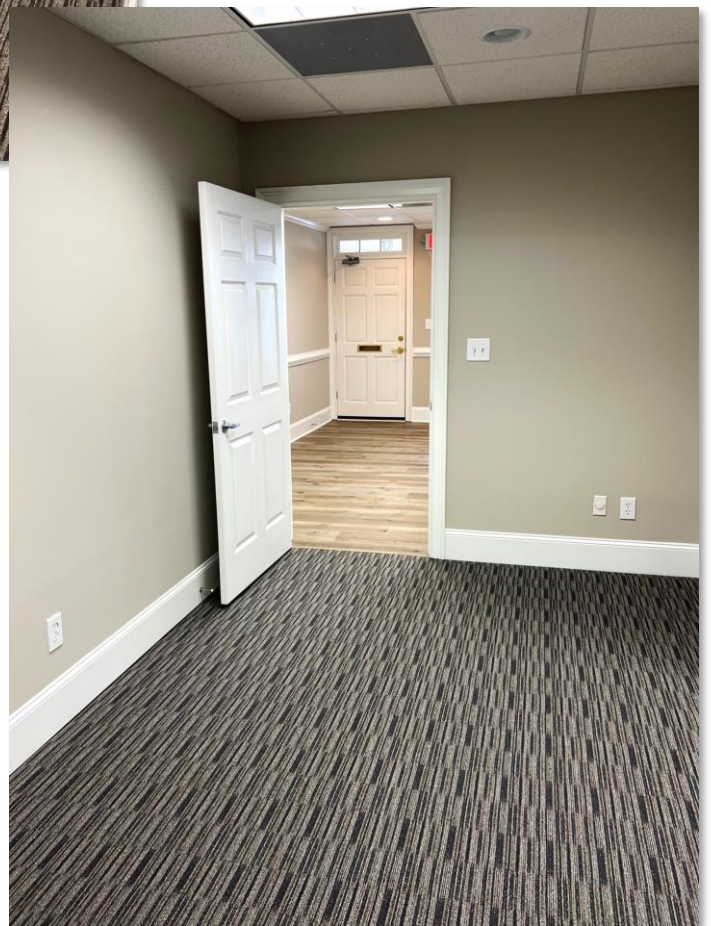
290 South Main St, Suite 500 • Alpharetta, GA 30009

For Lease

Upgraded  
Commercial Carpet  
and Hardwoods



Professional On-Site  
Management



COLONY PARK

OFFICE CONDOMINIUMS

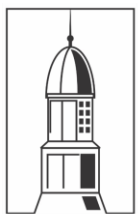
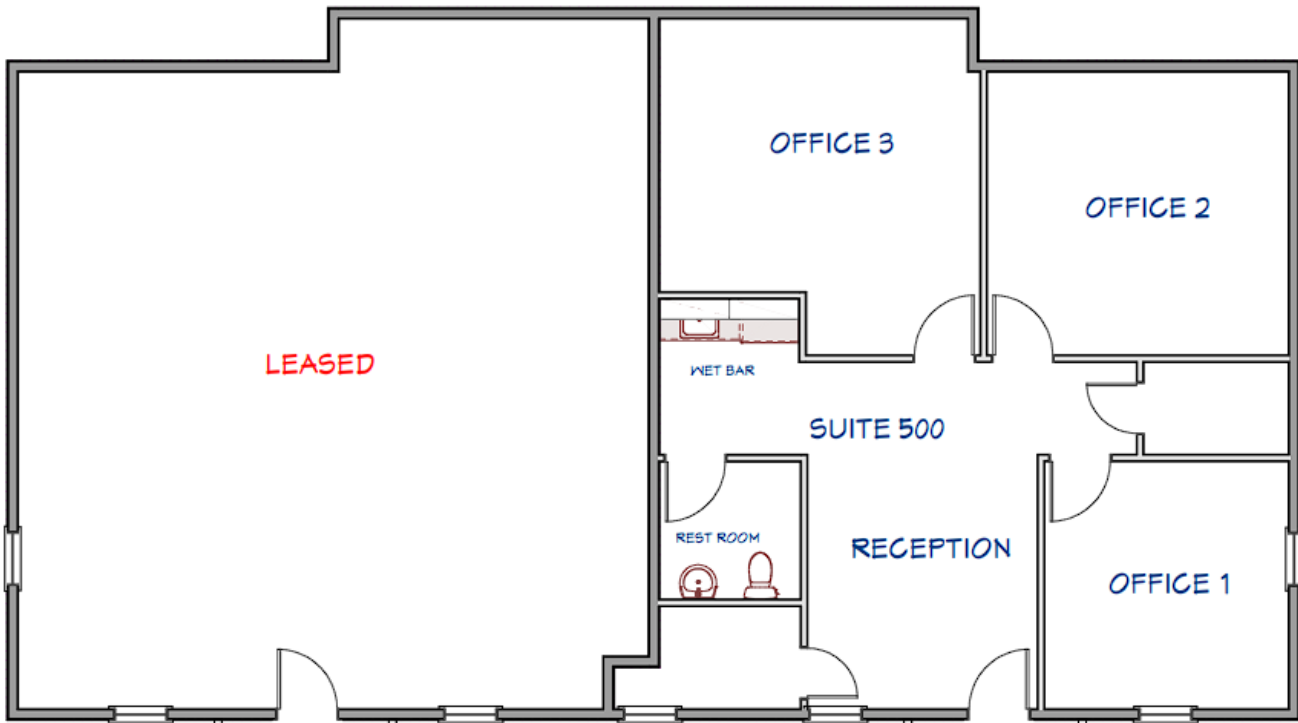
290 South Main St, Suite 500 • Alpharetta, GA 30009

For Lease



290 South Main St | Alpharetta

## Floor Plan – Suite 300



COLONY PARK

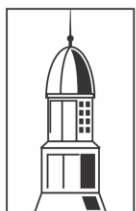
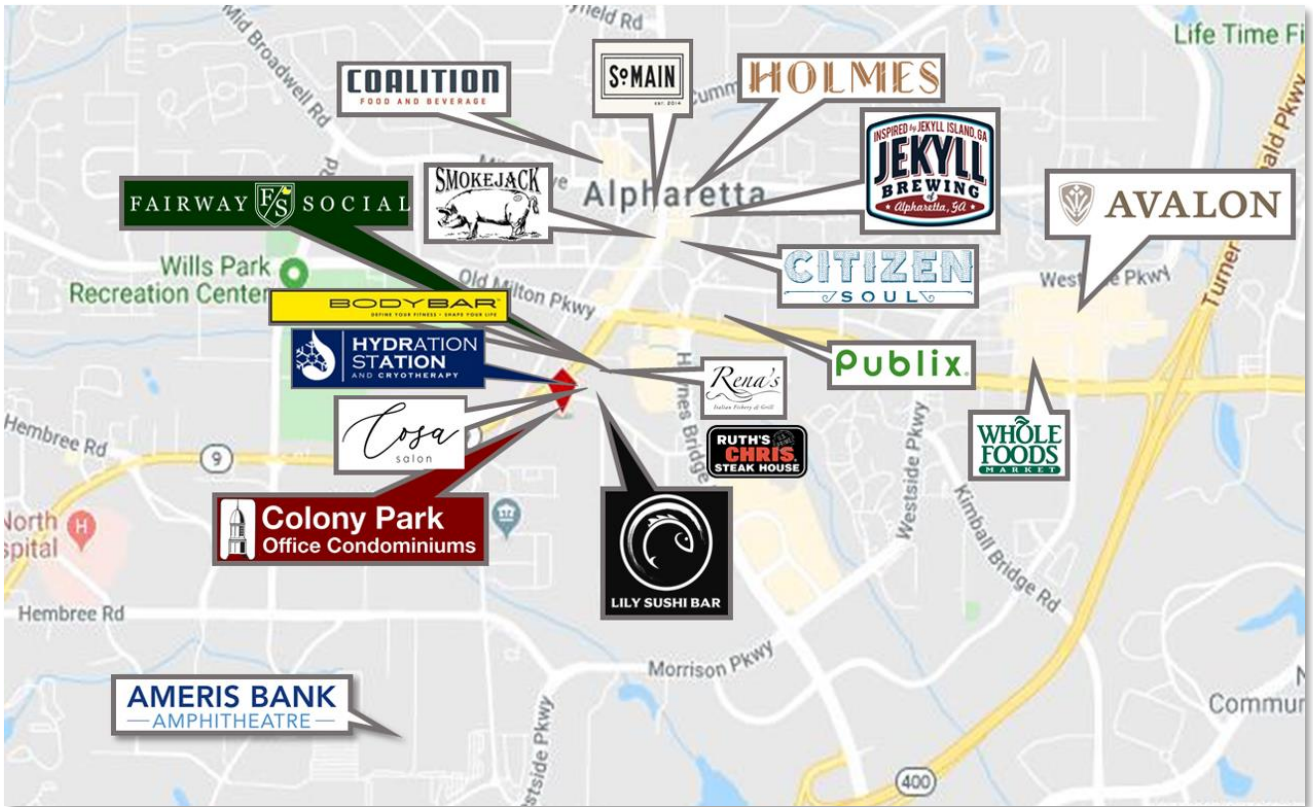
OFFICE CONDOMINIUMS

290 South Main St, Suite 500 • Alpharetta, GA 30009

# Location

For Lease

290 South Main St | Alpharetta



**COLONY PARK**  
OFFICE CONDOMINIUMS

290 South Main St, Suite 500 • Alpharetta, GA 30009