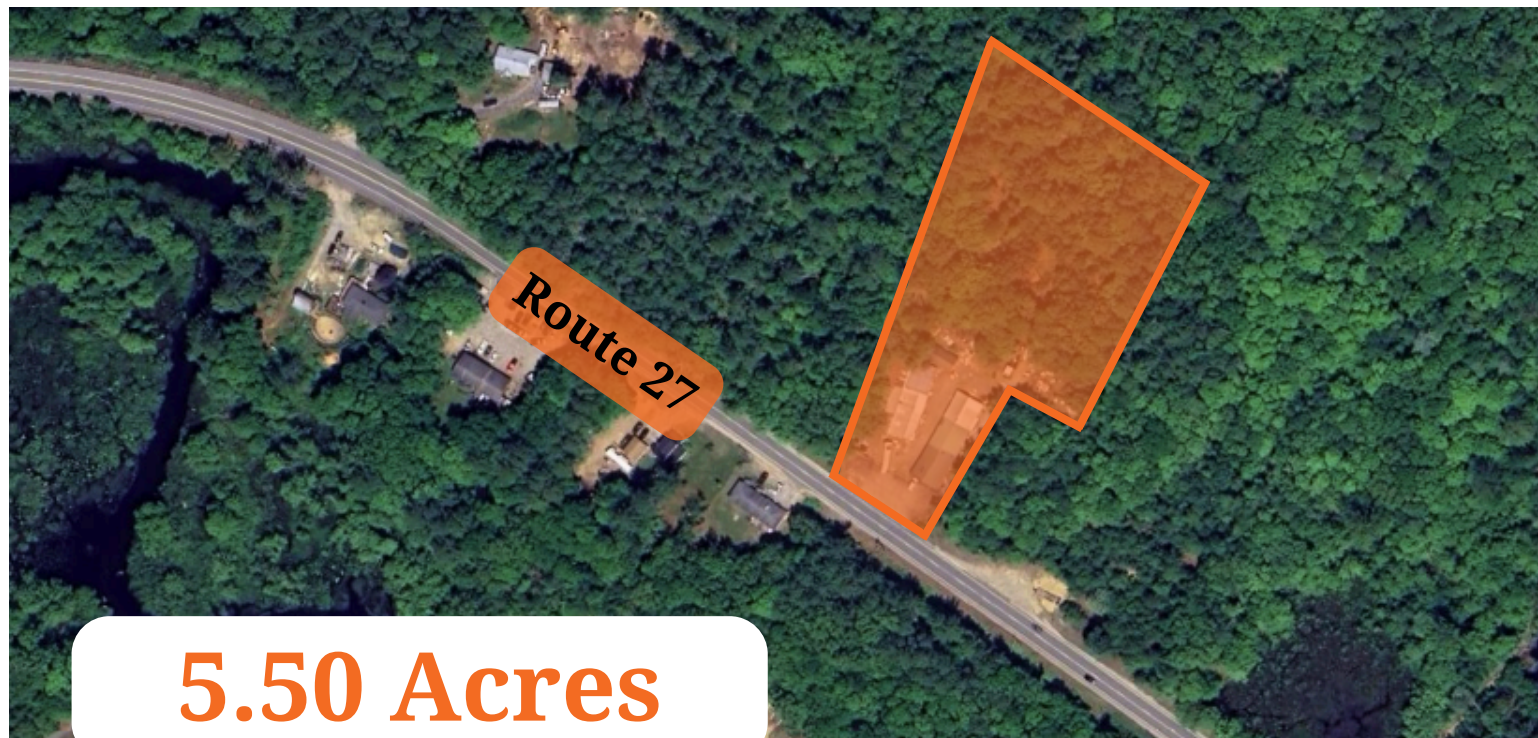


# For Sale // Industrial Land

85 NH Route 27, Raymond, NH 03077



## 5.50 Acres

### About:


Raymond Building Supply was a pillar of the community for many years. This 5.5 acre property is industrial zoned and has several structures on it. Most notably a 7,200 SF Flex/Office, and 5,184 SF barn (formerly lumber storage). Property has multiple non heated structures without electricity. Sale will be in as is condition, no seller financing is being offered.

Property has direct access to NH Route 27 and easy access to NH Route 101. A quick drive to local staples such as Tuckaway Tavern and Pawtuckaway State Park.




### Contact Details:

 **Brian Dano, CCIM**

 603-377-0309

 [Brian.Dano@SVN.com](mailto:Brian.Dano@SVN.com)

**Grace Moore** 

304-400-9499 

[Grace.Moore@SVN.com](mailto:Grace.Moore@SVN.com) 

# For Sale // Industrial Land

85 NH-27, Raymond, NH 03077



## Raymond, NH:

Raymond is a town in Rockingham County, New Hampshire, United States. The population was 10,684 at the 2020 census. Part of Pawtuckaway State Park is in the north. The main village in town, where 3,738 people resided at the 2020 census, is defined as the Raymond census-designated place (CDP), and is located along the Lamprey River near New Hampshire Route 27.

## Property Details:



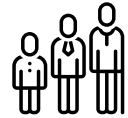
### Population

1 mile: 1,673  
3 miles: 10,197  
5 miles: 20,800



### Median HH Income

1 mile: \$77,834  
3 miles: \$85,456  
5 miles: \$100,025



### Median Age

1 mile: 46.5 years  
3 miles: 44.7 years  
5 miles: 44.0 years

**SALE PRICE**

// \$649,000

**LOT SIZE**

// 5.50 Acres

**BUILDINGS**

// 2

**BUILDING SIZE**

// 7,200 SF Total

**TRAFFIC COUNT**

// 8,787 VPD

**ZONING**

// Industrial District