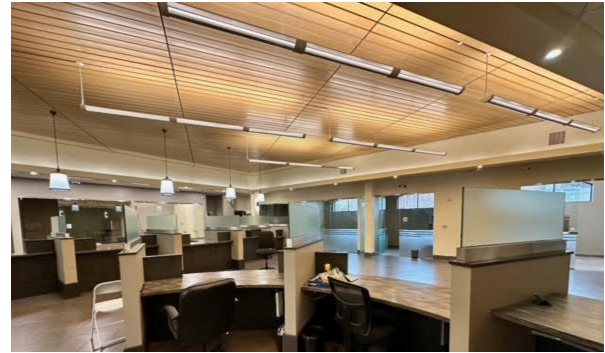


# FLAGSHIP OFFICE BUILDING-DOWNTOWN

2020 N PACIFIC AVE, SANTA CRUZ



8,732 BUILDING SQ FT | 20,735 LOT SQ FT

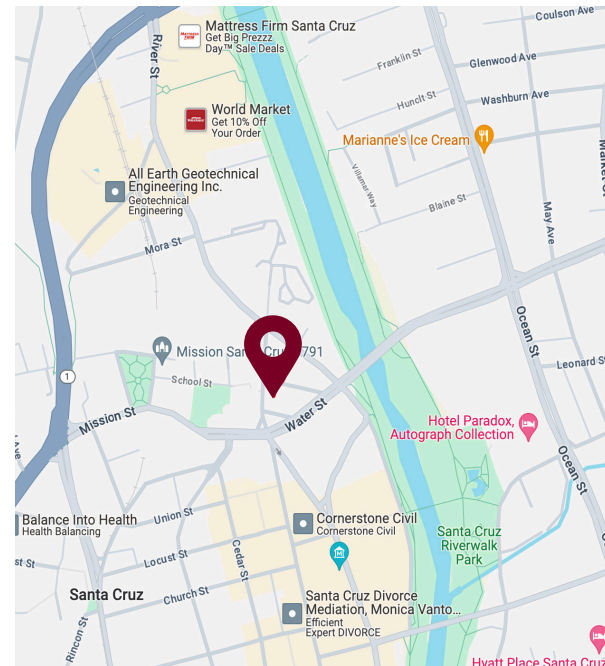
This former financial center exudes architectural elegance on a stand-alone corner location with exclusive gated parking, poised by the iconic clocktower at the top of Pacific Garden Mall.

A soaring interior environment adorned with high-end custom lighting and architectural details with no expense spared serves a flowing floorplan with dual street frontage.

Front-of-house offers grand entry and lobby areas complete with perimeter glass offices and conference facilities for its public-facing presence, while the back zones of the facility feature carpeted workstation areas and additional private offices with separate entrances and high-security vault room for private operations.

The ideal launching pad for a thriving startup, with a great commute location and walking access to the popular shops, restaurants, and theatres of downtown. Up to a 3-year lease term is available at an unusually attractive rate.

**\$1.25/NNN**



Listed By:

**DATTA KHALSA**

Broker & Owner

office: 831.462.4000

cell: **831.818.0181**

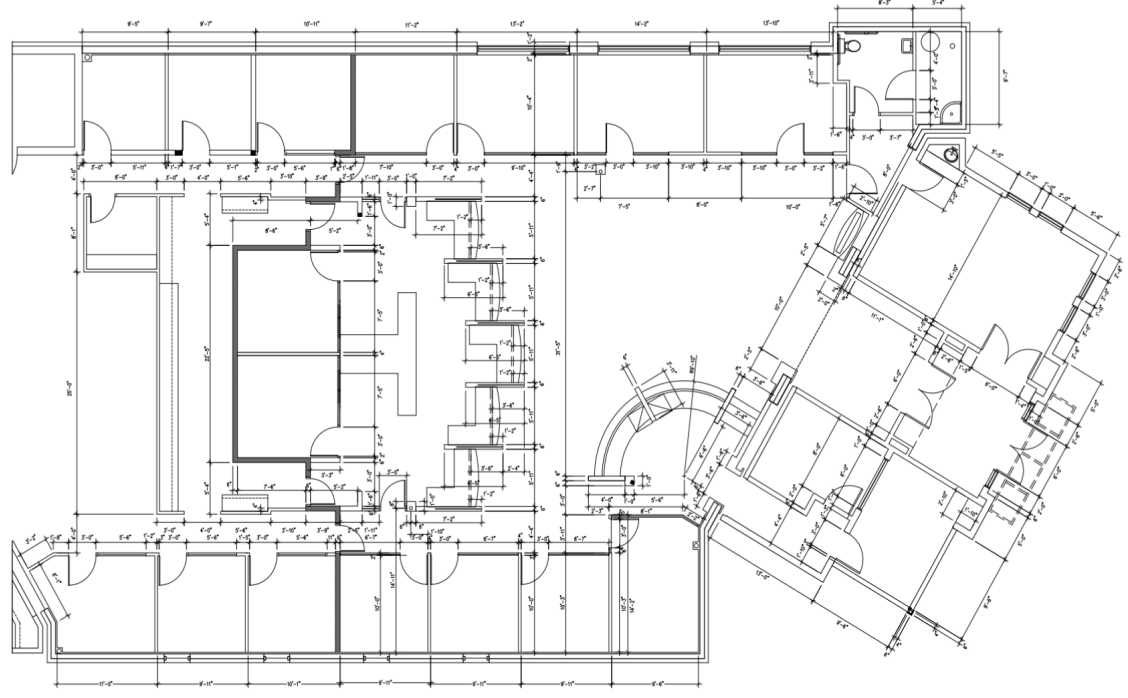
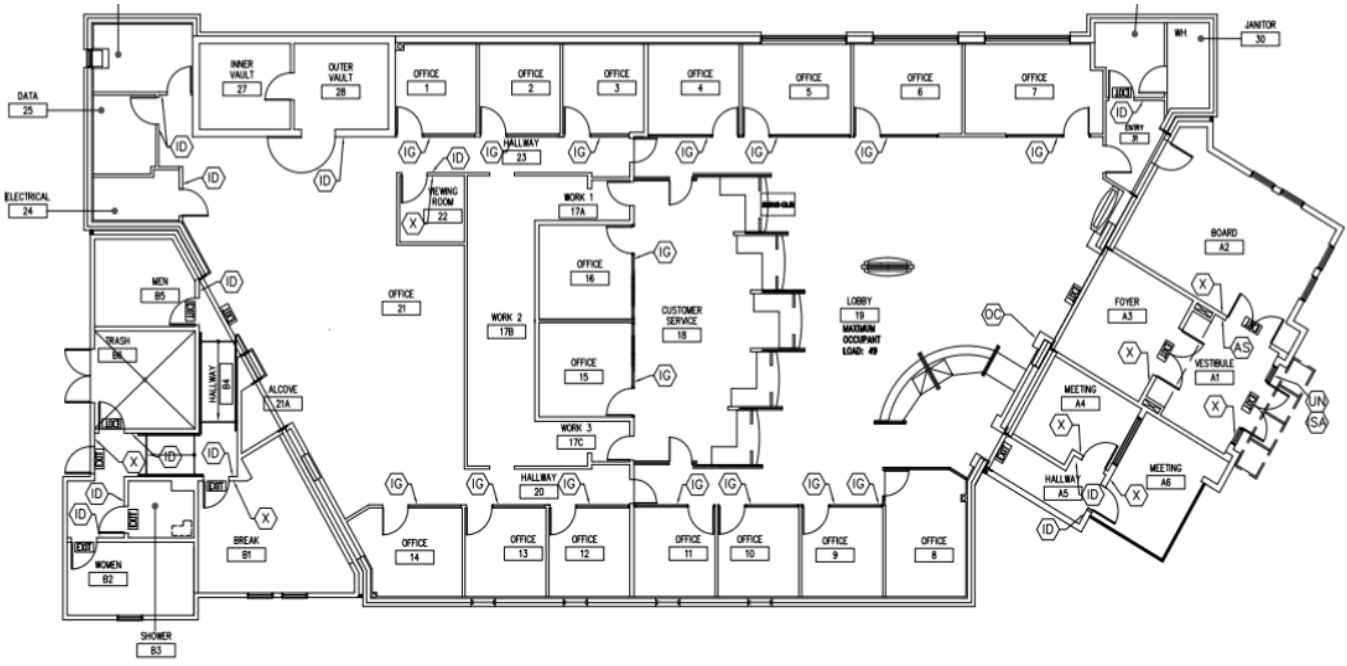
datta@mainstrealtors.com

DRE # 01161050



# FLAGSHIP OFFICE BUILDING-DOWNTOWN

2020 N PACIFIC AVE, SANTA CRUZ



Listed By:

**DATTA KHALSA**

Broker & Owner

office: 831.462.4000

cell: **831.818.0181**

datta@mainstrealtors.com

DRE # 01161050

