

FOR SUBLEASE

MARINA TOWERS NORTH OFFICE

4640 ADMIRALTY WAY

MARINA DEL REY, SUITE 1030 - 1040



WESTMAC
Commercial Brokerage Company

WILLIAM B. ALHOUSE
Executive Vice President
310-966-4389
DRE# 01403020

WESTMAC COMMERCIAL BROKERAGE COMPANY
1515 S. Sepulveda Boulevard, Los Angeles, CA 90025
www.westmac.com | TEL: 310-478-7700 | FAX: 310-479-3989
Company DRE# 01096973

BUILDING INFORMATION

4640 Admiralty Way

ASKING RENT	\$4.00 SF / FSG
SUBLEASE TERM	Through July 2025
OCCUPANCY	Immediate
SUITE SIZE	± 4,548 Sq. Ft
FURNITURE	Available

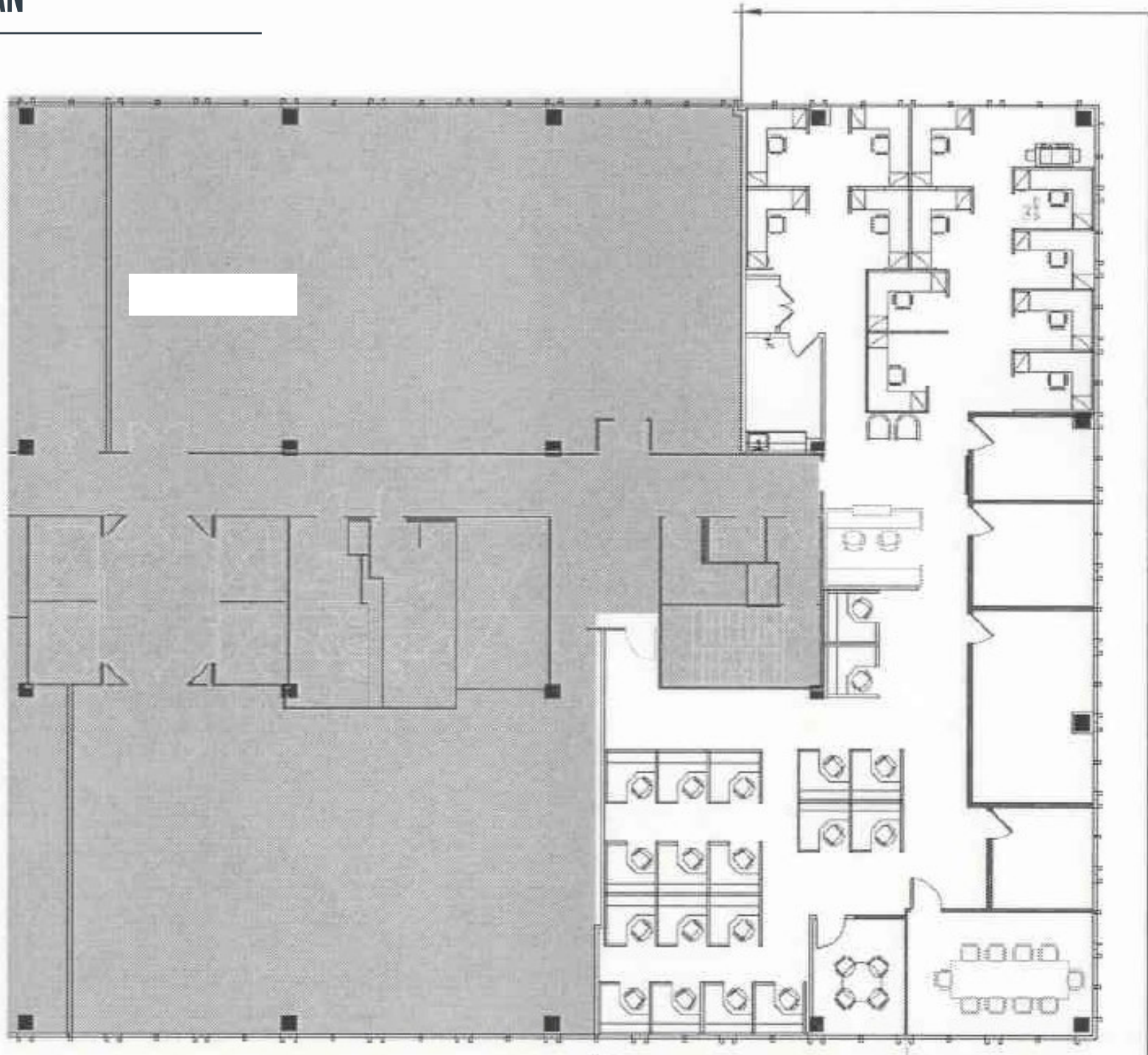
SPACE HIGHLIGHTS

- » Corner Suite with ocean views
- » All in place FF&E Negotiable
- » Fully built out open creative plan
- » Motivated Sub landlord
- » Excellent location in Marina Del Rey
- » Ample walkable amenities
- » Longer term direct lease available

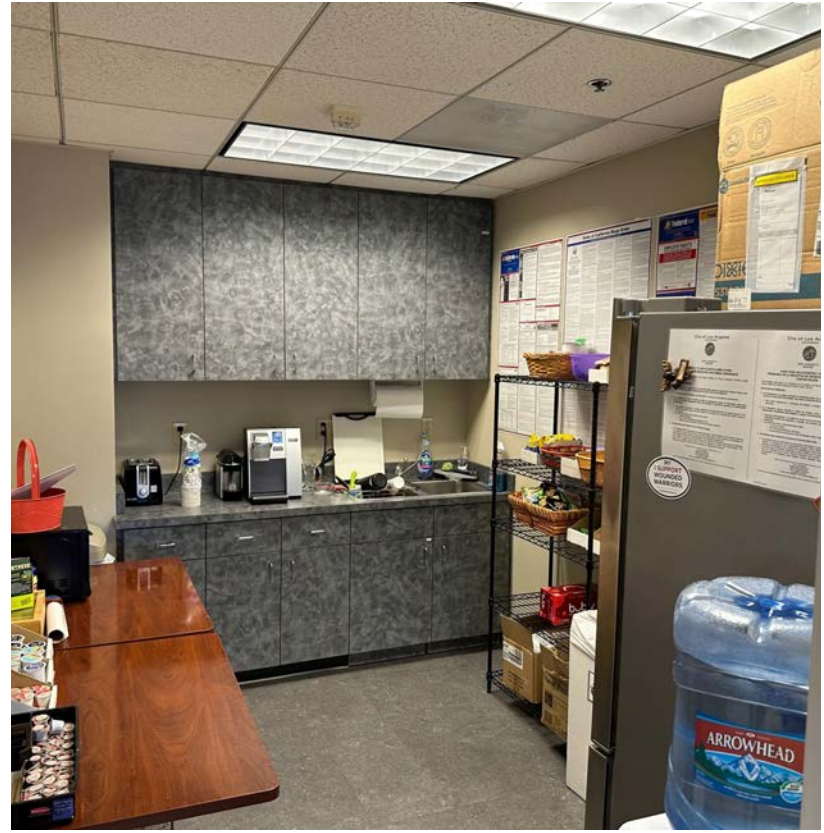
AMENITIES MAP



FLOOR PLAN



SUITE IMAGES



PROPERTY IMAGES





William B. Althouse

Executive Vice President

althouse@westmac.com

310.966.4389

DRE# 01403020

WESTMAC
Commercial Brokerage Company

©2024 WESTMAC Commercial Brokerage Company. All Rights Reserved. WESTMAC Commercial Brokerage fully supports the principles of the Equal Opportunity Act. WESTMAC Commercial Brokerage Company and the WESTMAC Commercial Brokerage Company logo are registered service marks owned by WESTMAC Commercial Brokerage Company and may not be reproduced by any means or in any form whatsoever without written permission.