

# 219 TERRY

219 Terry Avenue N | Seattle, WA 98109

31,797 SF  
AVAILABLE

FIRST-CLASS  
LABORATORY  
AND OFFICE  
IN SOUTH  
LAKE UNION



FULL  
BUILDING  
AVAILABLE

NEWMARK



ALEXANDRIA®  
Building the Future of Life-Changing Innovation™

# 219 Terry Building Amenities



SECURE DEDICATED  
PARKING LOT

SUSTAINABLE DESIGN

NEAR LAKE UNION PARK

PRIME SOUTH LAKE  
UNION LOCATION

FIRST-CLASS LAB



# 219 Terry Highlights


- Building fully renovated in 2010
- Recently renovated office areas with Class A finishes and upgraded LED lighting
- Gas manifold system with full distribution located on the first floor
- Dock loading door with leveler located off Terry Ave
- Common area glass wash system
- BSL2 Vivarium space in the basement
- Secured parking and EV charging available



# Scientific Community & Convenient Amenities


219 Terry is a multi-tenant building specializing in first-class laboratory and office space. It is centrally located in the heart of South Lake Union, where science & technology converge. The building is in walking distance to Eastlake or Downtown Seattle and is less than a ten minute drive to Fremont and the U-District.

219 Terry offers a secure, gated parking garage, loading dock and easy access to I-5, SR-99, public transit and designated bike lanes to significantly improve commute times.

 **35+**  
Restaurants

 **15+**  
Cafés










 **5+**  
Fitness Centers

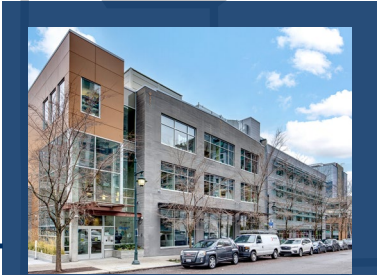
  
24/7 Security Program

  
Nearby Transit

  
Near Lake Union Park

  
Bike Storage with Showers/Lockers

-  South Lake Union Streetcar
-  Multi-Use Trail
-  Dedicated Bike Lane
-  Bike Route with Signage
-  Bus Route 70-83
-  Future RapidRide Roosevelt (est. 2024)
-  Highway Exits/Entrances
-  Last exit before downtown Seattle; direct access to the building via Eastlake
-  Other Alexandria Properties



219 Terry Avenue N.  
Seattle, WA 98109

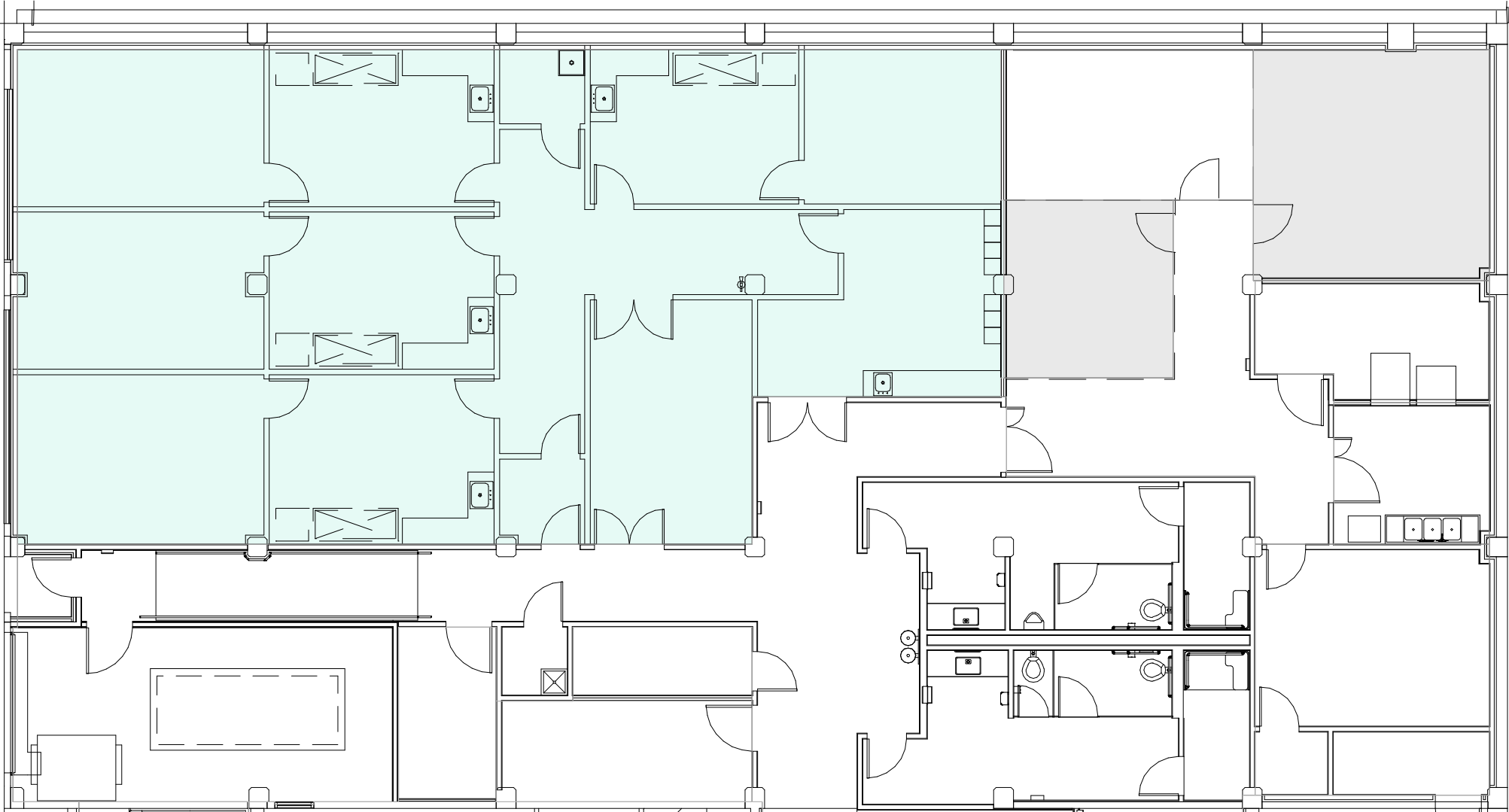
# Basement

# 3,895 SF

AVAILABLE 6/1/2023

Office

Lab: 40% of premises

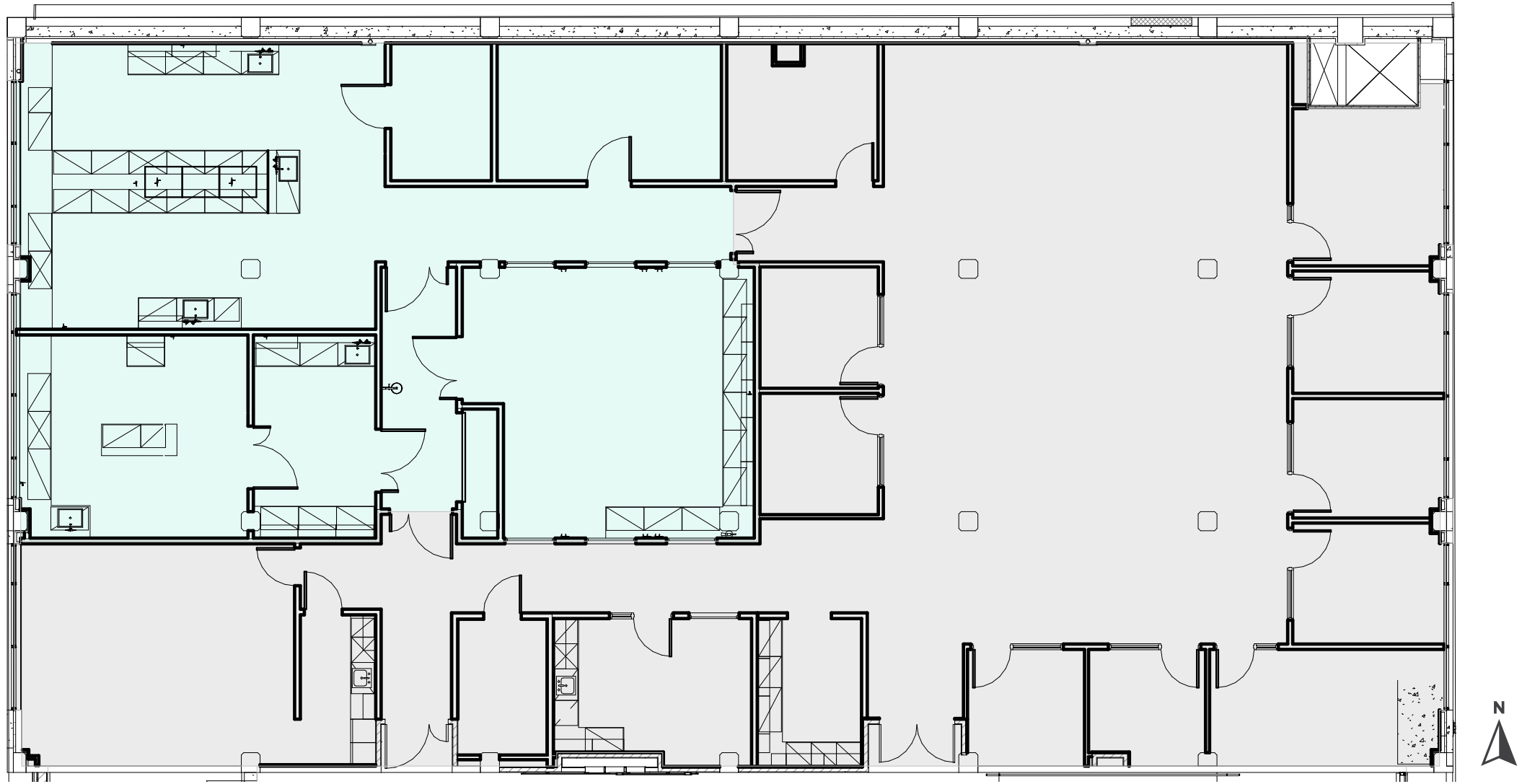


# Floor 1

## 8,684 SF

AVAILABLE 6/1/2023

- Office
- Lab: 40% of premises



# Floor 2

## 7,276 SF

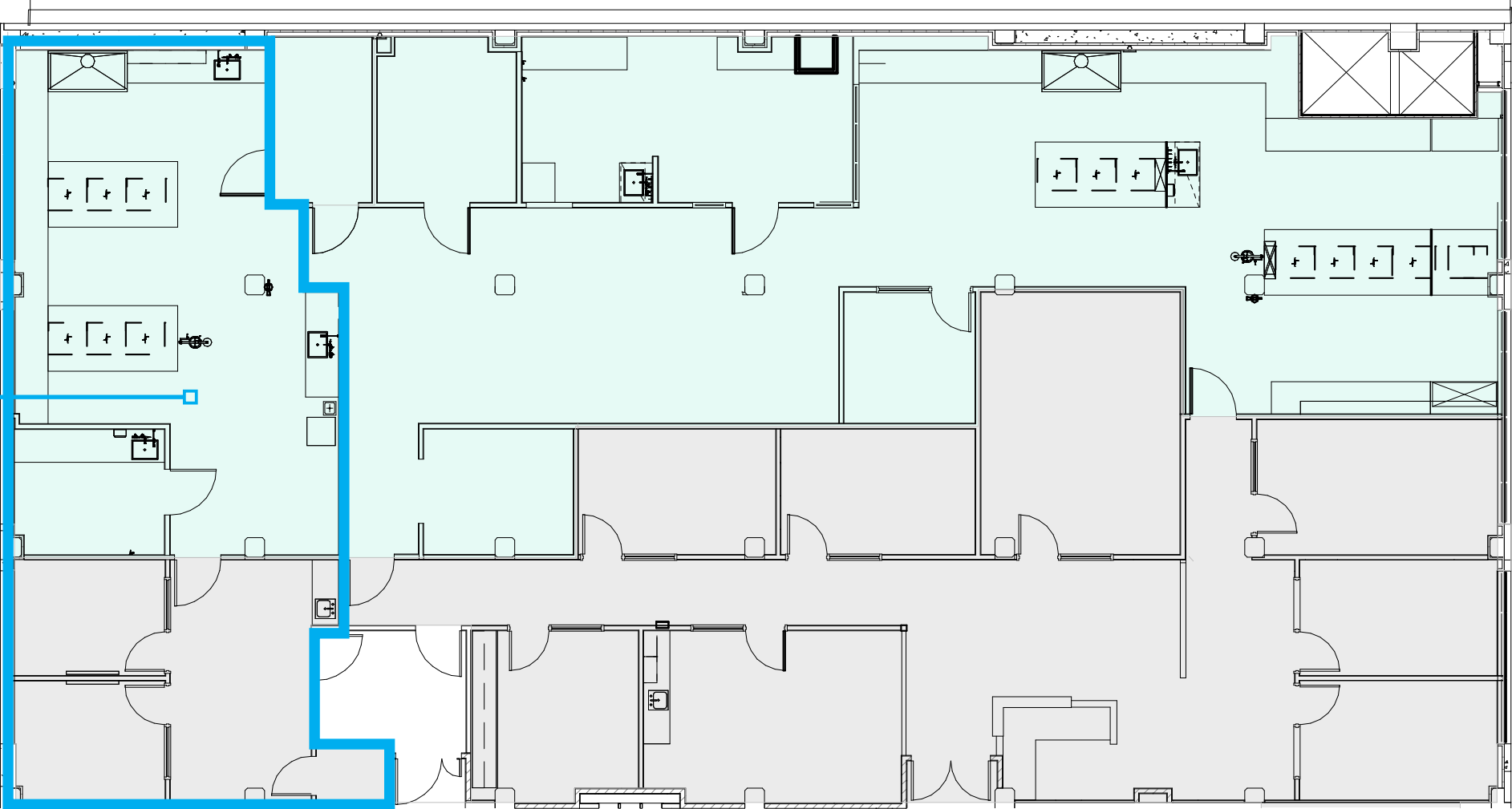
AVAILABLE 6/1/2023



Office



Lab: 50% of premises



**2,147 SF**

AVAILABLE 8/1/2024



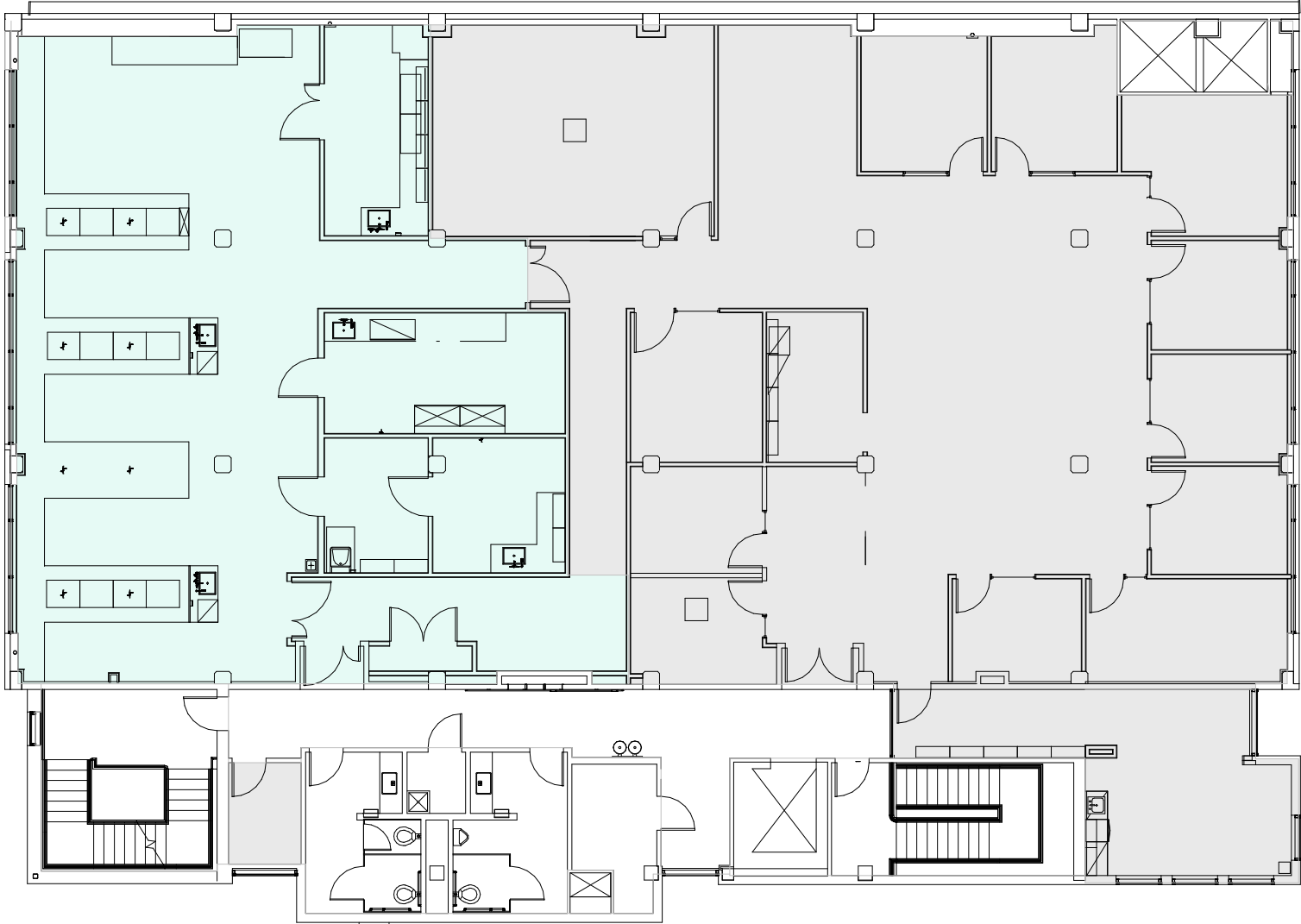
# Floor 3

## 9,795 SF

AVAILABLE 6/1/2023

Office

Lab: 40% of premises







# 219 TERRY

219 Terry Avenue N | Seattle, WA 98109

## LEASING CONTACTS

**Cavan O'Keefe**  
(206) 395-2903  
cavan.okeefe@nmrk.com

**Jesse Ottele**  
(206) 452-4529  
jesse.ottele@nmrk.com

**Daniel Seger**  
(206) 487-5163  
daniel.seger@nmrk.com



**ALEXANDRIA**  
*Building the Future of Life-Changing Innovation™*

**NEWMARK**



The distributor of this communication is performing acts for which a real estate license is required. The information contained herein has been obtained from sources deemed reliable but has not been verified and no guarantee, warranty or representation, either express or implied, is made with respect to such information. Terms of sale or lease and availability are subject to change or withdrawal without notice.