



1070 Marina Village Parkway

ALAMEDA, CA 94501

LILLY FOGLEMAN
REALTOR®
CALDRE #DRE# 01976924
707.206.5818
LILLY@WREALESTATE.NET

W
COMMERCIAL



Property Description

Office space available at Safe Harbor Marina Village. Ideal for yacht brokerages, maritime services and small business professionals. Dock your boat at the marina and enjoy waterfront views of Oakland and Jack London Square from your office. Just 15 minutes from San Francisco. Conveniently located near the Posey Tube and public transportation. Free parking and deli onsite. Newly updated interior suites.

Property Highlights

- Utilities Included
- Free Parking
- Close to Public Transportation
- Deli Onsite
- Shopping Center Nearby
- Gorgeous Views

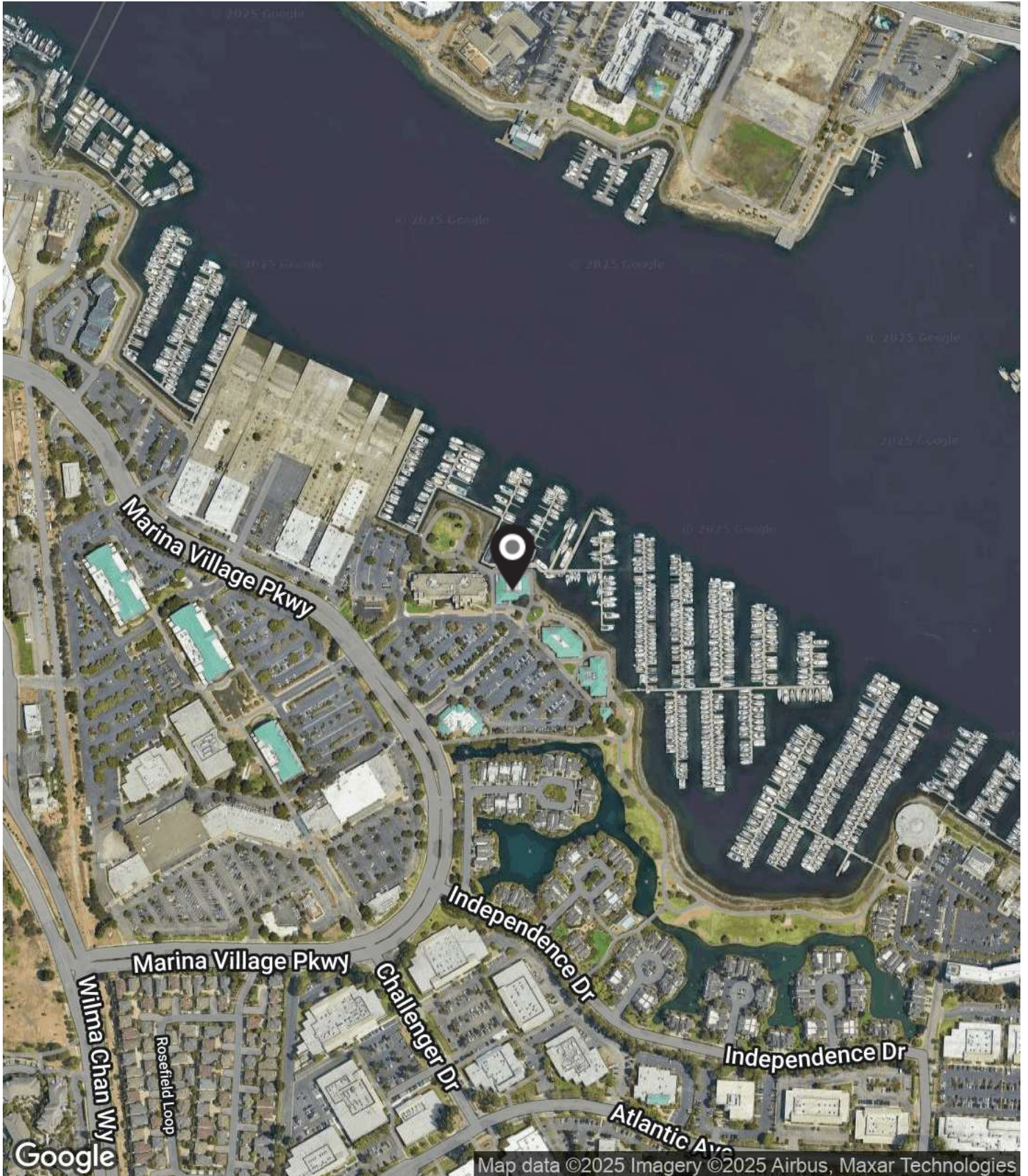
OFFERING SUMMARY

Lease Rate:	\$2.85 SF/month (Gross)
Number of Units:	28
Available SF:	835 SF
Lot Size:	713,137 SF
Building Size:	17,926 SF

DEMOGRAPHICS	0.3 MILES	0.5 MILES	1 MILE
Total Households	152	1,358	9,449
Total Population	374	3,055	22,870
Average HH Income	\$206,119	\$197,044	\$164,224

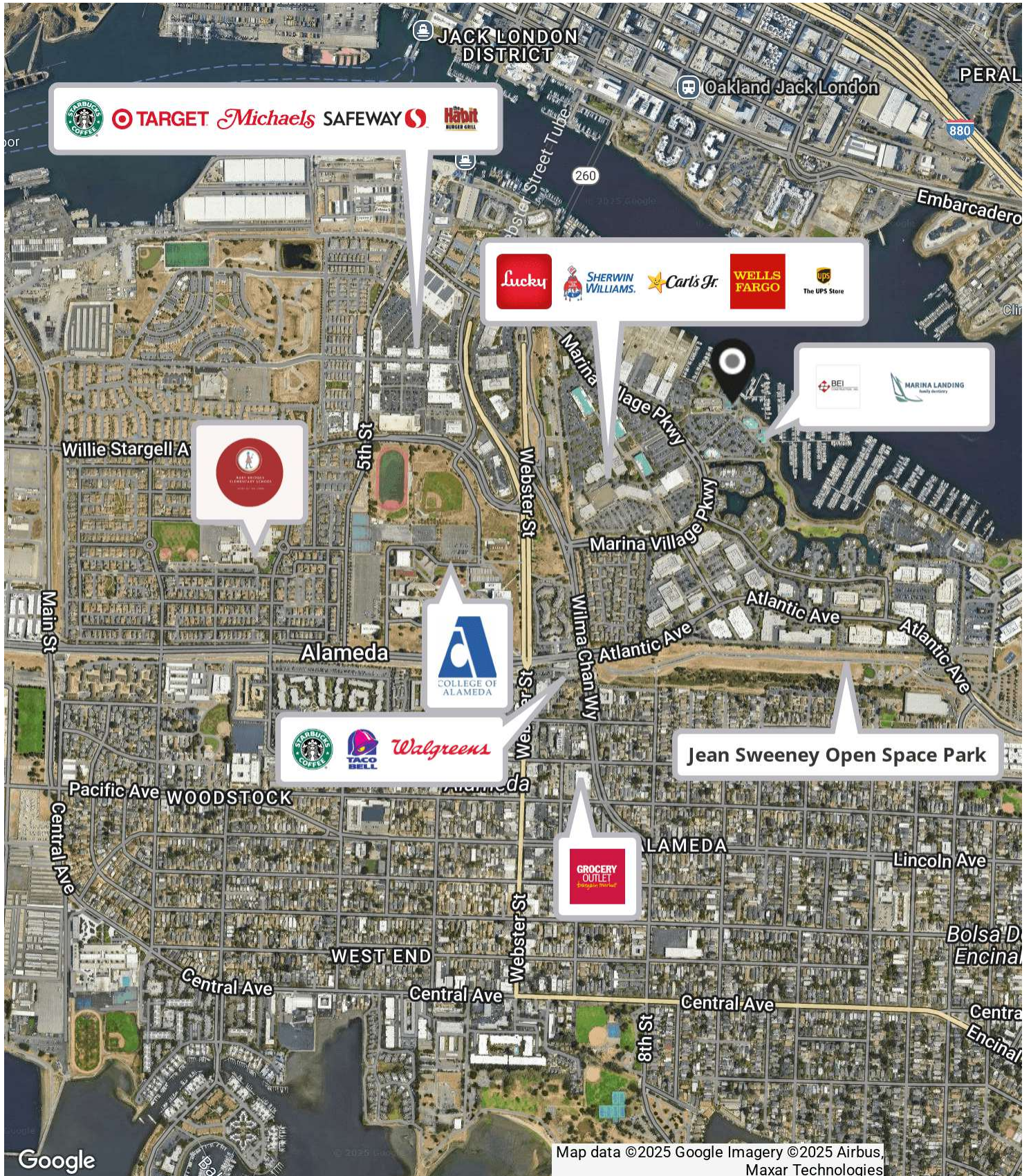
Location Map

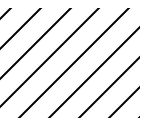
1070 MARINA VILLAGE PARKWAY | ALAMEDA



Retailer Map

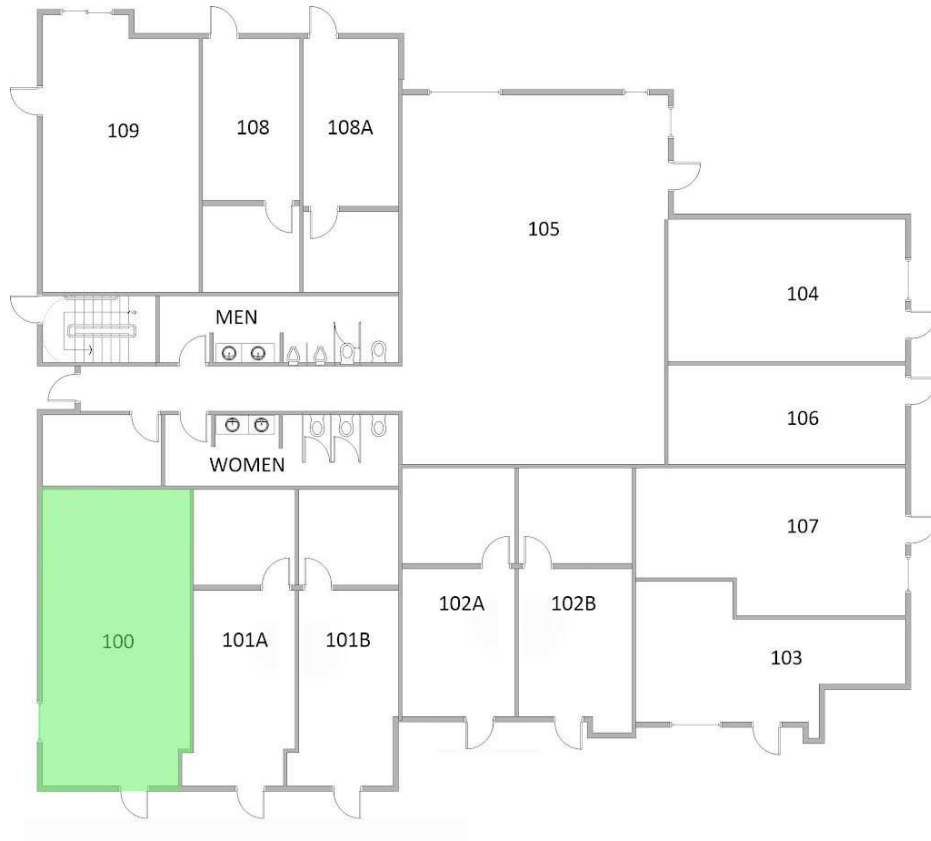
1070 MARINA VILLAGE PARKWAY | ALAMEDA





Floor Plans

1070 MARINA VILLAGE PARKWAY | ALAMEDA

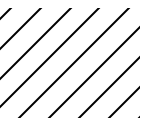


Lease Information

Lease Type:	Gross	Lease Term:	Negotiable
Total Space:	835 SF	Lease Rate:	\$2.85 SF/month

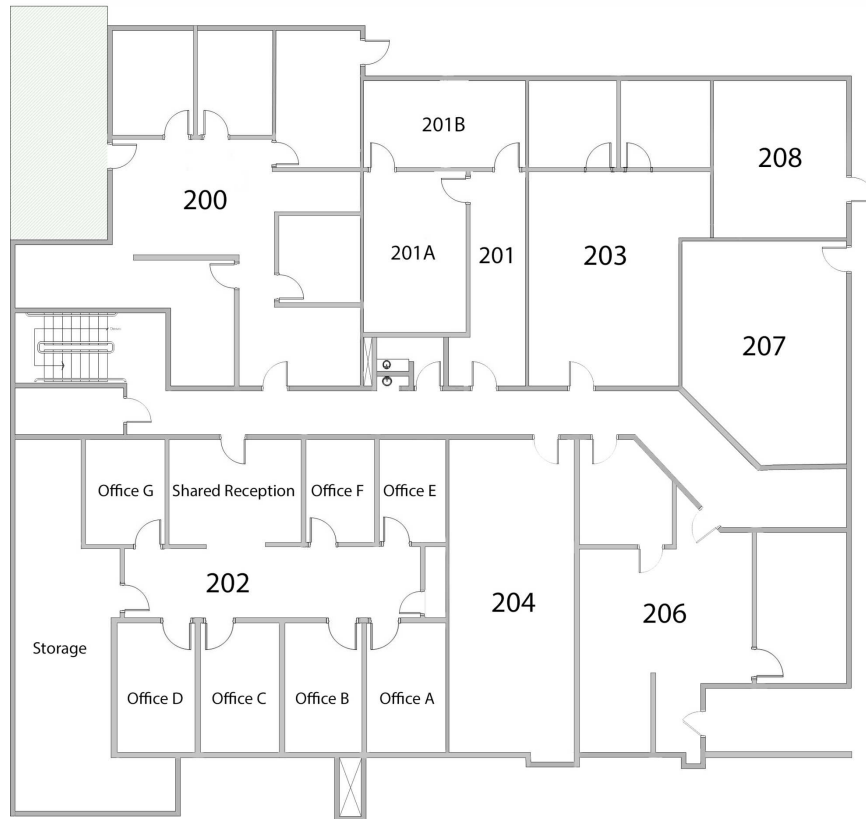
Available Spaces

SUITE	TENANT SIZE	TYPE	RATE	DESCRIPTION
■ 1070 Marina Village Parkway	Available	835 SF	Gross \$2.85 SF/month	Excellent, first floor, corner location. Highly visible. Perfect for office or retail uses.



Floor Plans

1070 MARINA VILLAGE PARKWAY | ALAMEDA

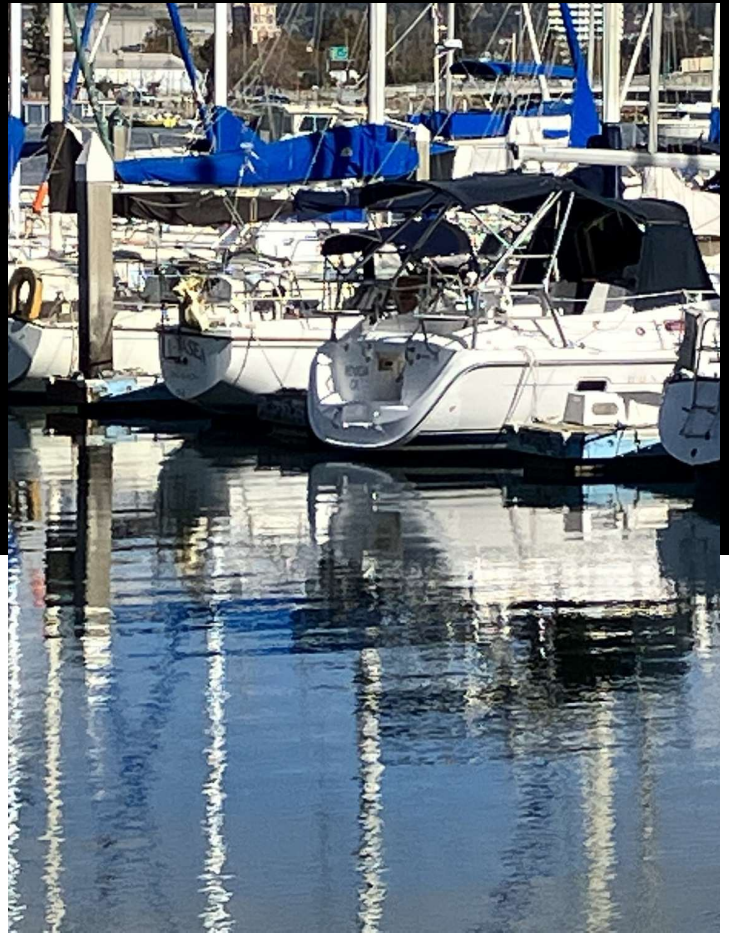


Lease Information

Lease Type:	Gross	Lease Term:	Negotiable
Total Space:	835 SF	Lease Rate:	\$2.85 SF/month

Available Spaces

SUITE	TENANT	SIZE	TYPE	RATE	DESCRIPTION
-------	--------	------	------	------	-------------





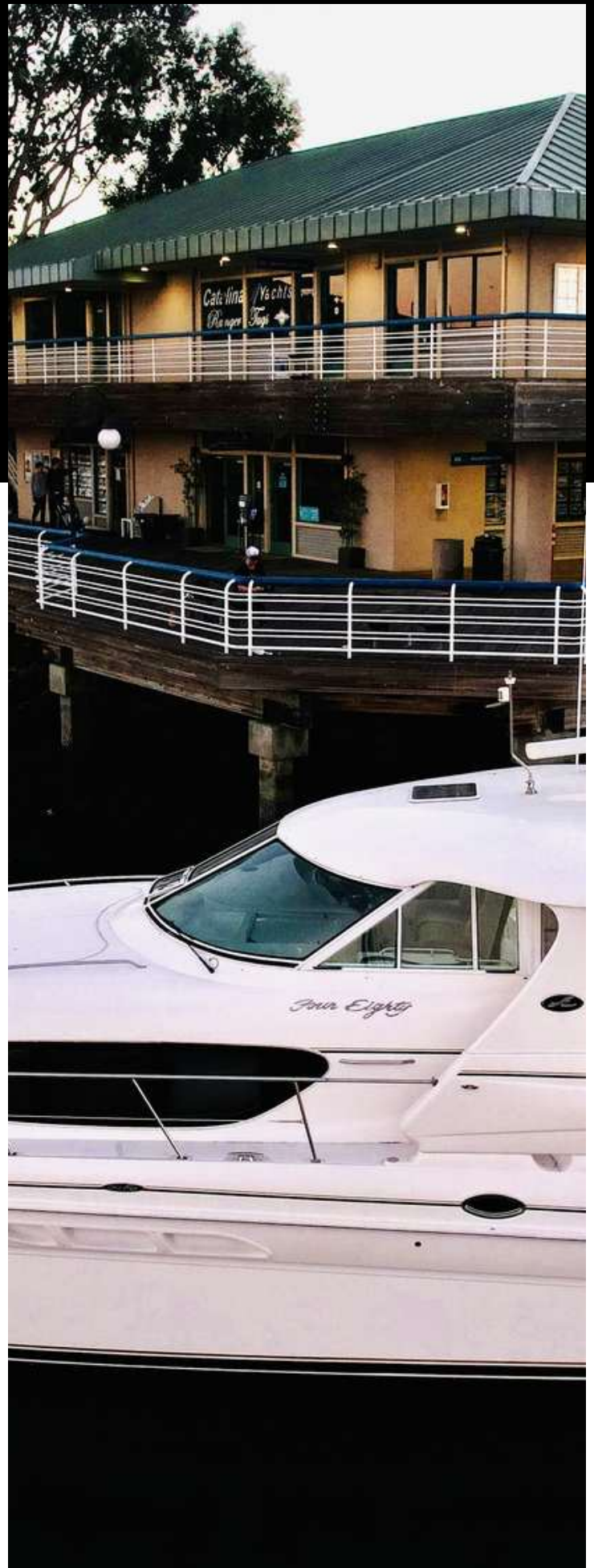
About W Commercial

W Commercial is a full-service real estate brokerage founded in Northern California. We've built a solid reputation of excellent customer service, attention to detail, and results. We provide unparalleled service and expertise that will exceed your expectations. Through advertising locally, statewide, nationwide, and around the world, we ensure your property receives maximum exposure.

Our team of knowledgeable agents and marketing specialists work together to produce exceptional results. We do our research, know what drives sales, and are always ahead of the curve on industry trends, consistently selling in all sectors of real estate at or above the asking price.

500 BICENTENNIAL WAY, SUITE 310
SANTA ROSA, CA 95403

PHONE: 707.591.0570
WCOMMERCIALRE.COM





W
COMMERCIAL

LILLY FOGLEMAN
REALTOR® | CALDRE #DRE# 01976924
707.206.5818 | LILLY@WREALESTATE.NET
WCOMMERCIALRE.COM

DISCLAIMER

This property is being offered on an as-is basis. While the Broker believes the information in this brochure to be accurate, no warranty or representation is made as to its accuracy or completeness. Interested parties should conduct independent investigations and reach conclusions without reliance on materials contained in this brochure.

This property owner requests that you do not disturb the Tenants, as the property will only be shown in coordination with the Listing Agent.

This brochure is presented under the terms and conditions of the Confidentiality Agreement. As such, the material contained in this brochure is confidential and is provided solely for the purpose of considering the purchase of the property described herein. Offers should be presented to the agent for the property owner. Prospective buyers are encouraged to provide the buyer's background, source of funds, and any other information that would indicate their ability to complete the transaction smoothly.