

The **COMMONS** *at Concord Park*

300 E. Sonterra Blvd. | San Antonio, Texas 78258



*Move-In Ready
Suites Available*

*Class A
Project*

*Noteworthy
Sonterra Address*

Leased By
STREAM

B Brookwood

The COMMONS at Concord Park

300 E. Sonterra Blvd. | San Antonio, Texas 78258

Property Site Plan



Building Overview

The Commons at Concord Park consists of 108,116 square feet spread out between four Class A buildings.

The property is conveniently located on E. Sonterra Boulevard, just northwest of the Loop 1604 / Highway 281 interchange with multiple access points of ingress/egress.

Nestled in Stone Oak, one of San Antonio's fastest growing and most affluent areas, the property is just minutes from nearby hotels, retail, entertainment and numerous dining establishments.

Bldg I	43,916 rentable square feet (Two Floors)
Bldg II	27,000 rentable square feet
Bldg III	25,200 rentable square feet
Bldg IV	6,165 rentable square feet

Year Built	2001-2004
Parking Ratio	4.4/1,000

Key Features



Executive Covered
Parking



Walkable
Dining Options



Nearby Fitness
Facilities



Hotel
Accommodations



Lease Rate

\$19.50/RSF/YR + NNNs

Availabilities

Bldg I: Suite 1140 - 2,019 RSF
Suite 1145 - 1,597 RSF (Avail. 1/1/25)
Suite 1150 - 3,782 RSF

Bldg II: Suite 240 - 7,508 RSF

Bldg III: Suite 330 - 1,202 RSF
Suite 350 - 9,790 RSF

Bldg IV: Suite 405 - 2,165 RSF
Suite 410 - 4,000 RSF

Suites 410/460 contiguous for total of 12,000 RSF.

Sample Finishes



Property Feature List

- Executive covered parking
- Double steel glass doors
- Staircase with glass railing
- Modern tenant directory
- Fineline lighting
- Clear height: 10'
- Four concrete buildings featuring limestone accents
- 2'x2' acoustic ceiling tile
- Solid core cherry veneer doors and 2'x4' parabolic lighting



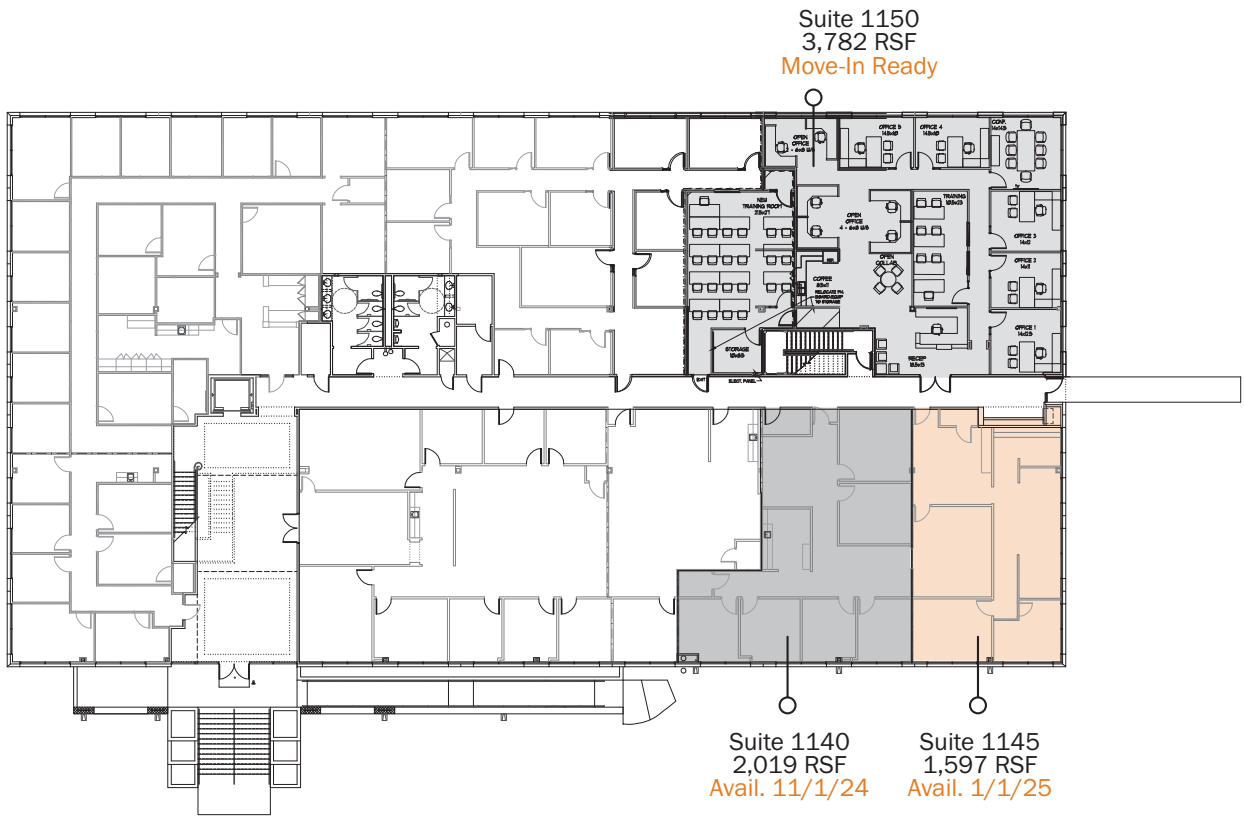
Location



Download
Floorplate

Building I

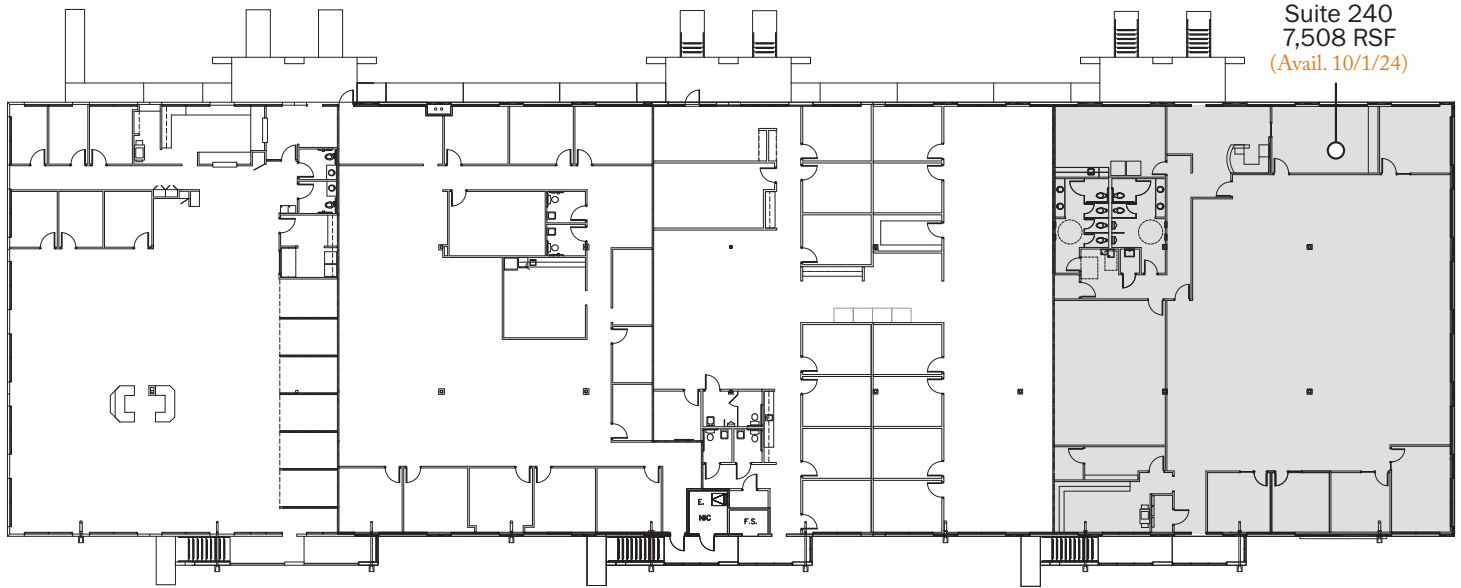
LEVEL 1





Download
Floorplate

Building II LEVEL 1

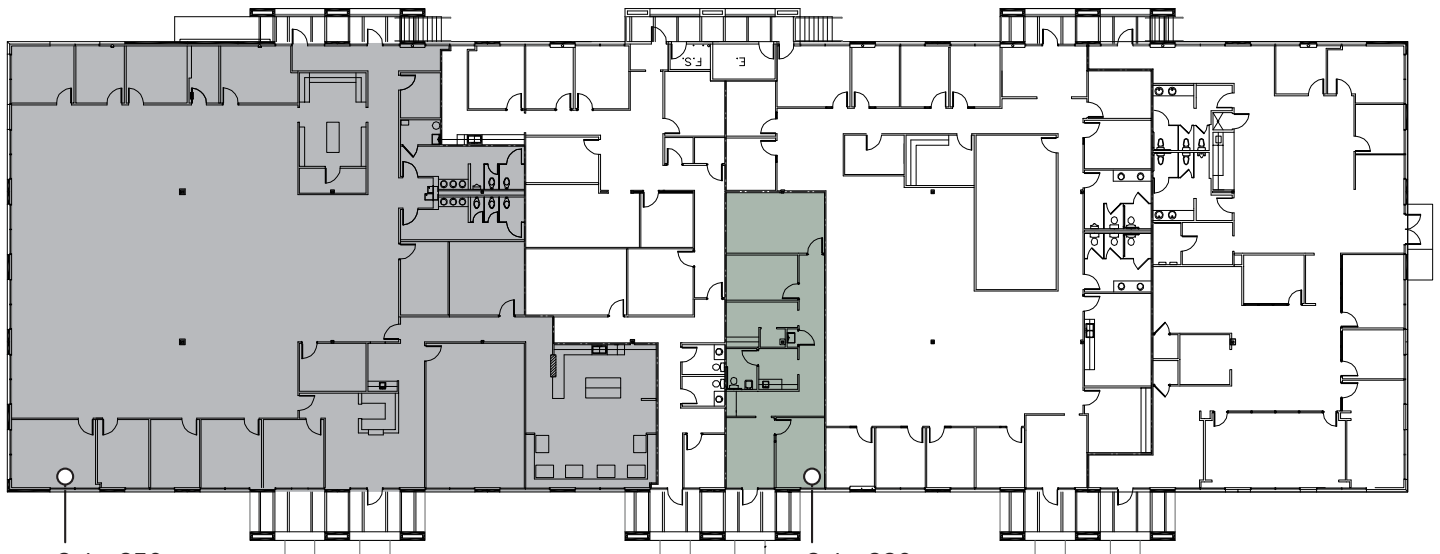


Suite 240
7,508 RSF
(Avail. 10/1/24)



Download
Floorplate

Building III LEVEL 1



Suite 350
9,790 RSF

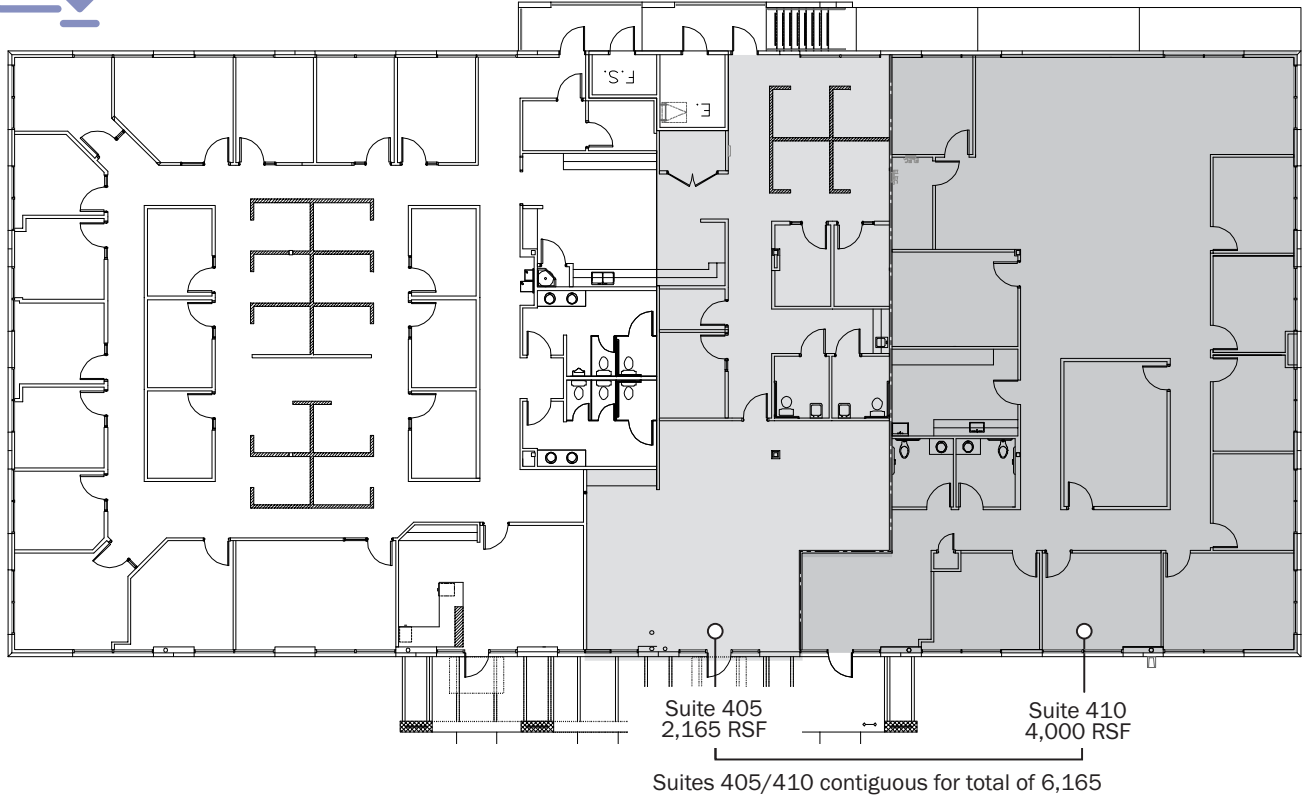
Suite 330
1,202 RSF



Download
Floorplate

Building IV

LEVEL 1





The
COMMONS
at Concord Park

300 E. Sonterra Blvd. | San Antonio, Texas 78258


STREAM

For Leasing Information, Contact:

Scott Ferguson | Vice President
scott.ferguson@streamrealty.com
210.298.8531

Garrett Carlson | Vice President
garrett.carlson@streamrealty.com
210.298.8515

A Property Of

 **Brookwood**