

FOR SALE

SINGLE FAMILY LOT WATERFRONT PROPERTY

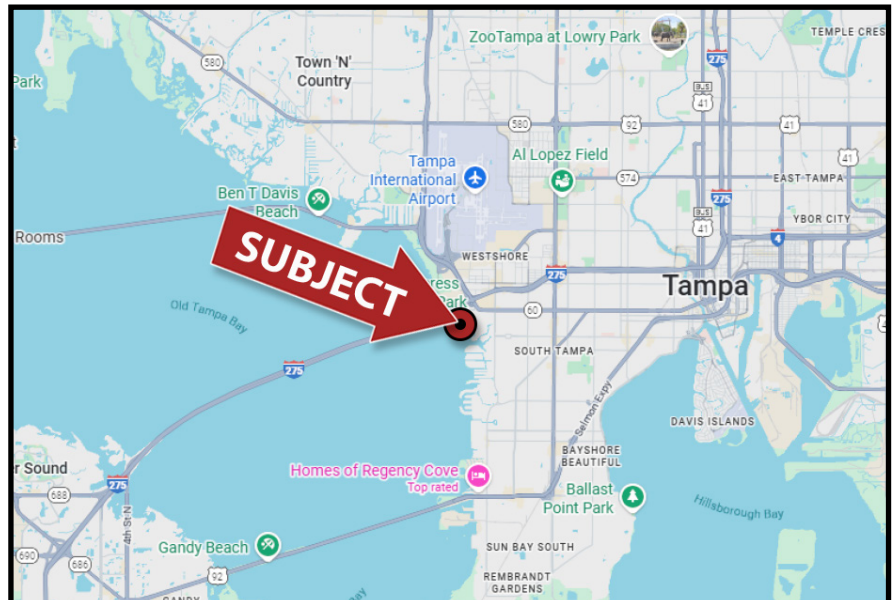
52 Sandpiper Road, Tampa, FL 33609-3528



## FEATURES

- Beach Park: 8,910 Sq Ft Waterfront Lot
- 92' Water Frontage - New Seawall
- Located in a quiet street in the heart of Beach Park looking into open area of Tampa Bay Marina
- Minutes from downtown, Tampa International Airport, top-rated restaurants, International Plaza & Westshore Mall
- Top A-rated School Districts - Grady Elementary, Coleman Middle School & Plant High School
- Utilities: Water, Sewer, Trash: City of Tampa
- Electric: TECO
- Folio Number: 114255-0000
- Flood Zone: AE
- SALE PRICE: \$2,640,000.00

## LOCATION MAP



Elliott M. Ross, CCIM  
O: 813.755.6700  
C: 727.639.3800  
elliottross@rossrealty.com

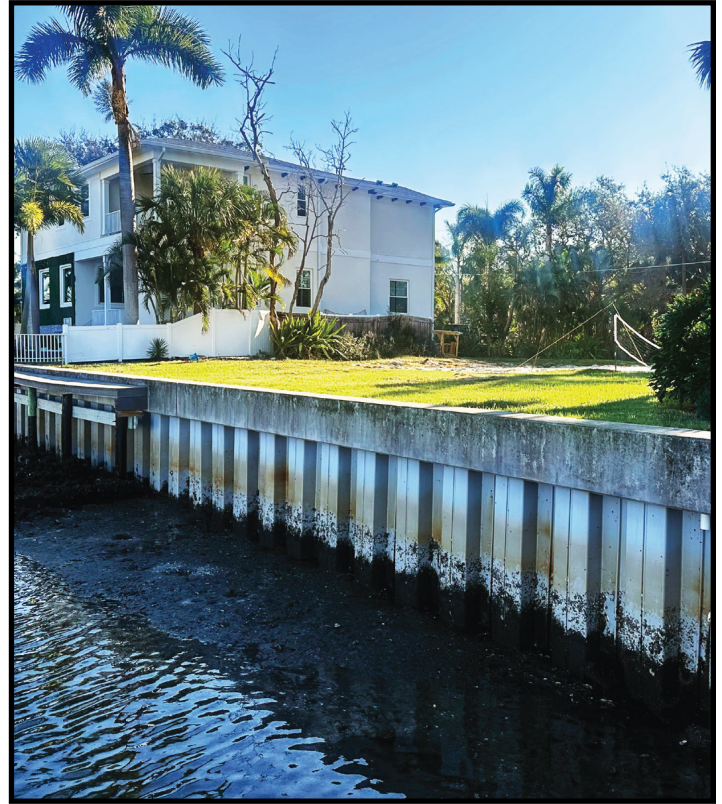
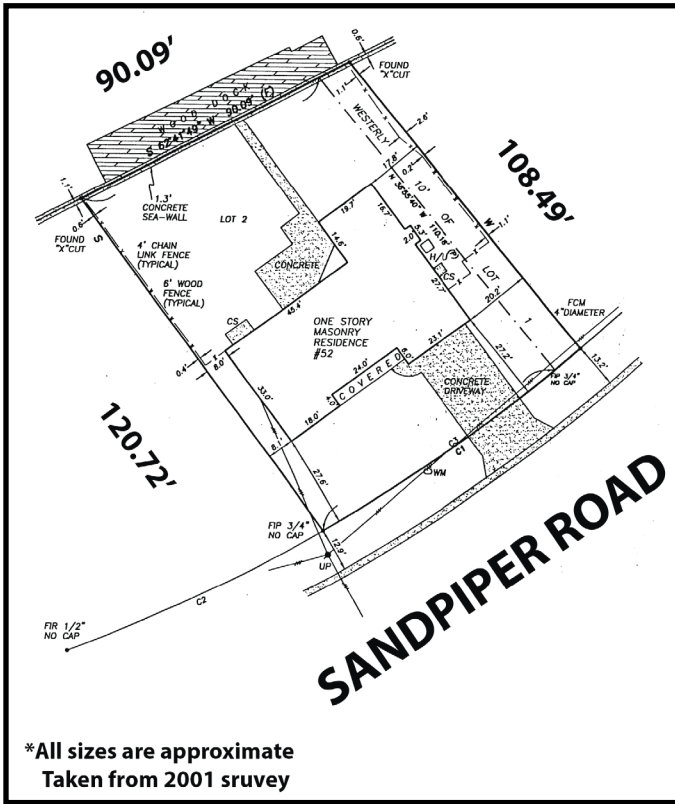
ROSS REALTY GROUP, INC.  
Westshore Square  
4600 W. Cypress St., Suite 525  
Tampa, FL 33607





**FOR SALE**  
**SINGLE FAMILY LOT WATERFRONT PROPERTY**  
**52 Sandpiper Road, Tampa, FL 33609-3528**

**SURVEY**



**Hillsborough County Parcel Map**

