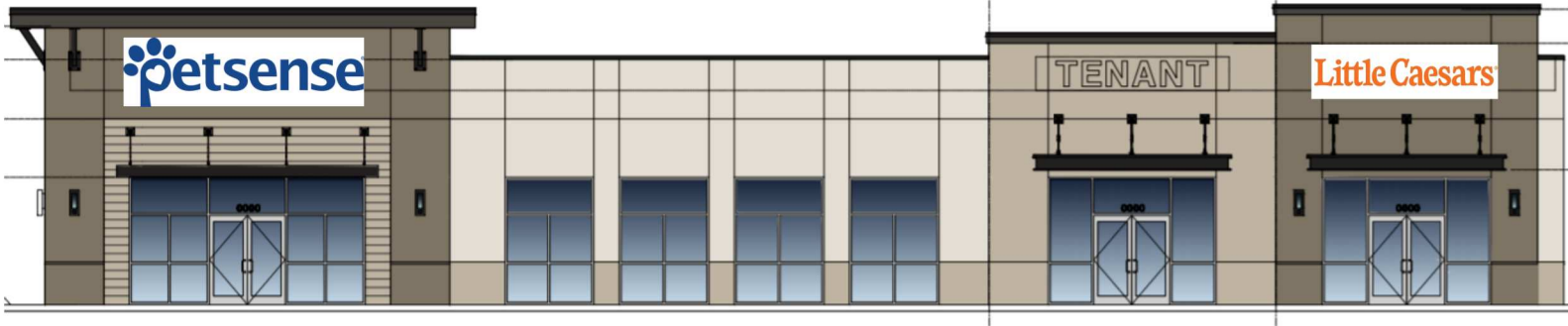


**Coming Soon - FOR LEASE**

**Kissimmee, FL**




**Available**



**Pleasant Hill Rd, Kissimmee FL 34758**

**Property Highlights**

- Outparcel to Lowes Development in Poinciana
- Next to Newly Open  **TACO BELL**
- Recently installed direct curb cut to Pleasant Hill Rd
- 2.56 Acre Development Site including Brand New Taco Bell,
- Multi Tenant Retail Building Coming Soon with Petsense and Little Caesar's

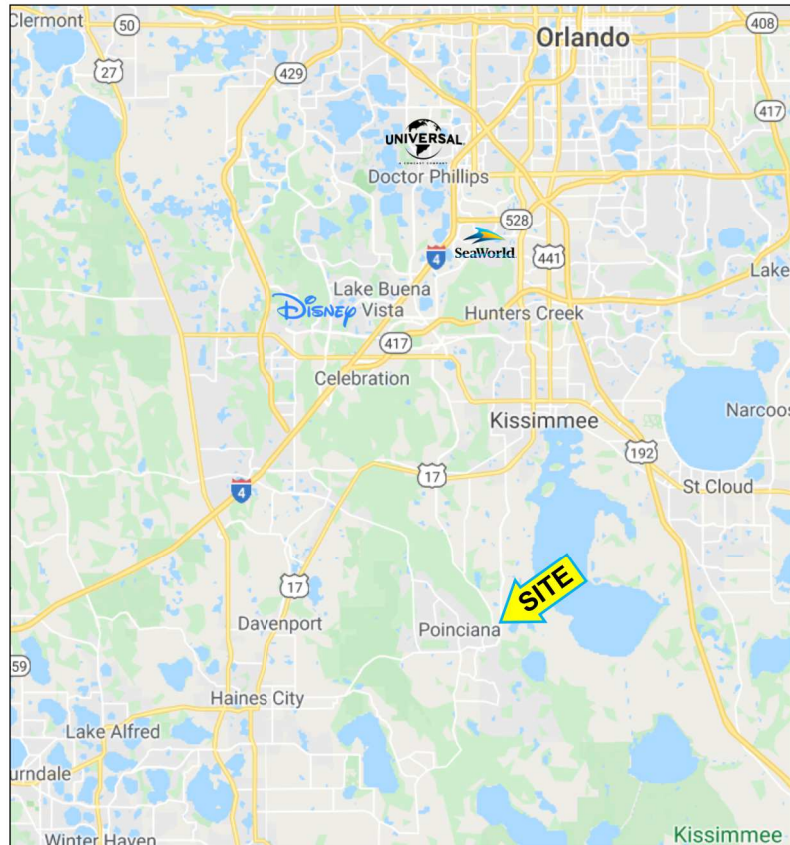
**Available Space: 1,700+/- SF**

**Traffic Count: 40,000 ± CPD**

**Trade Area - Demographics**

**Population-90,981 Households-29,762**

<b>Demographics</b>	<b>1mile</b>	<b>3mile</b>	<b>5mile</b>
Population (2019)	2,740	23,441	75,324
Population (2024)	3,293	27,537	86,994
Average HH Income	\$58,162	\$53,639	\$61,143



**FOR LEASE**

**Kissimmee, FL**

**REAL PROPERTY SPECIALISTS, INC.**  
Appraisers • Brokers • Consultants



**REAL PROPERTY SPECIALISTS, INC.**  
Appraisers • Brokers • Consultants

**For More Information Call 407.812.8000**  
[www.realpropertyspecialists.com](http://www.realpropertyspecialists.com)

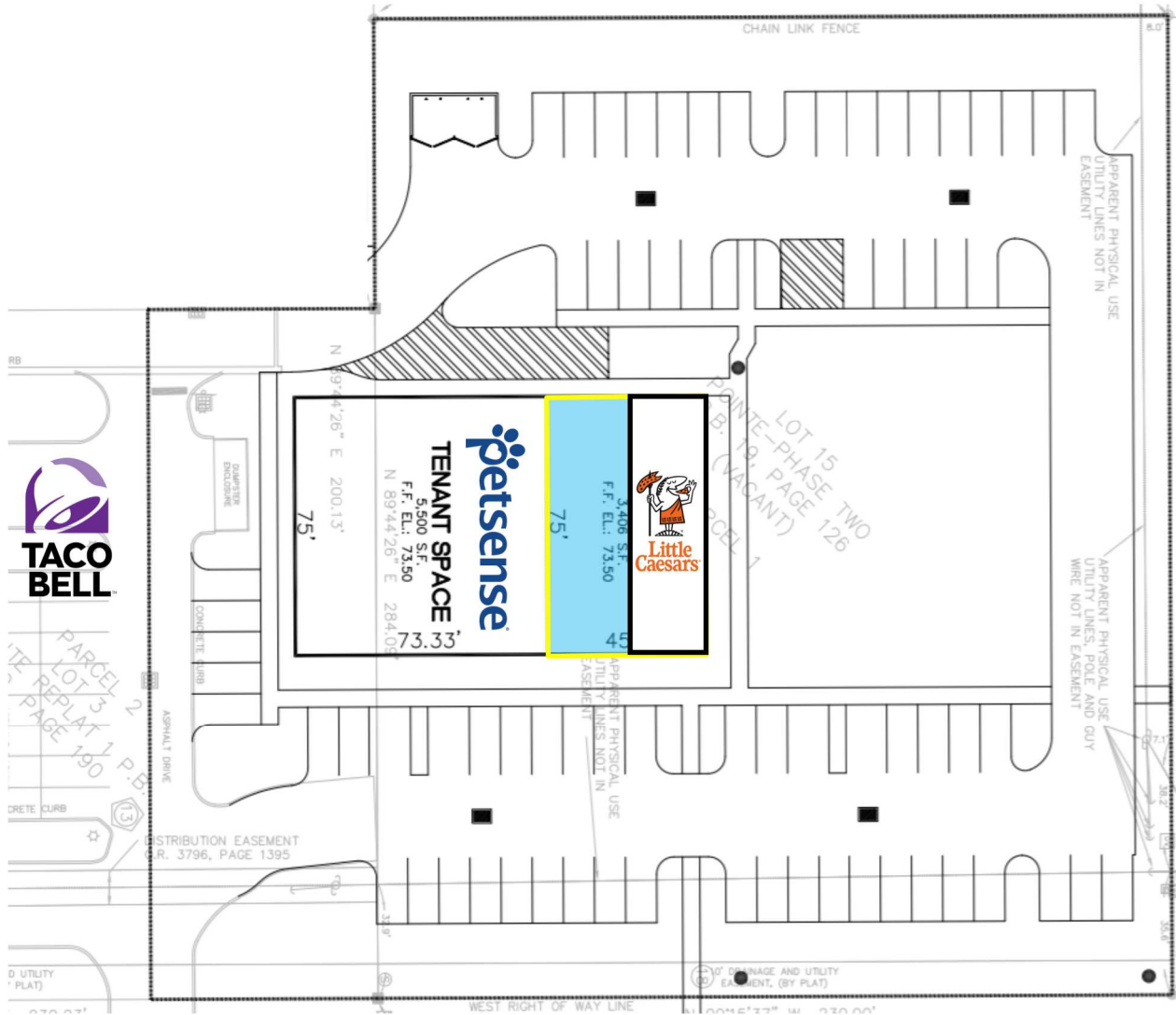
The information contained herein is submitted subject to errors, omissions, prior sale or lease, or withdrawal without notice

**FOR LEASE**

**Kissimmee, FL**



**Proposed Site Plan**



**For More Information Call 407.812.8000**

[www.realpropertyspecialists.com](http://www.realpropertyspecialists.com)

The information contained herein is submitted subject to errors, omissions, prior sale or lease, or withdrawal without notice