



MISSION SQUARE MULTI-TENANT BUILDING FOR LEASE

3706 MERCER UNIVERSITY DRIVE, MACON, GA 31204
BIBB COUNTY

800 SF, 900 SF, 1,500 SF and 2,700 SF Spaces Available



LEASE RATES:

\$10.50/SF - \$17.40/SF



STERLING BAILEY C: 478.951.9443

SBAILEY@THESUMMITGROUPMACON.COM

4124 ARKWRIGHT ROAD, SUITE 1 MACON, GA 31210

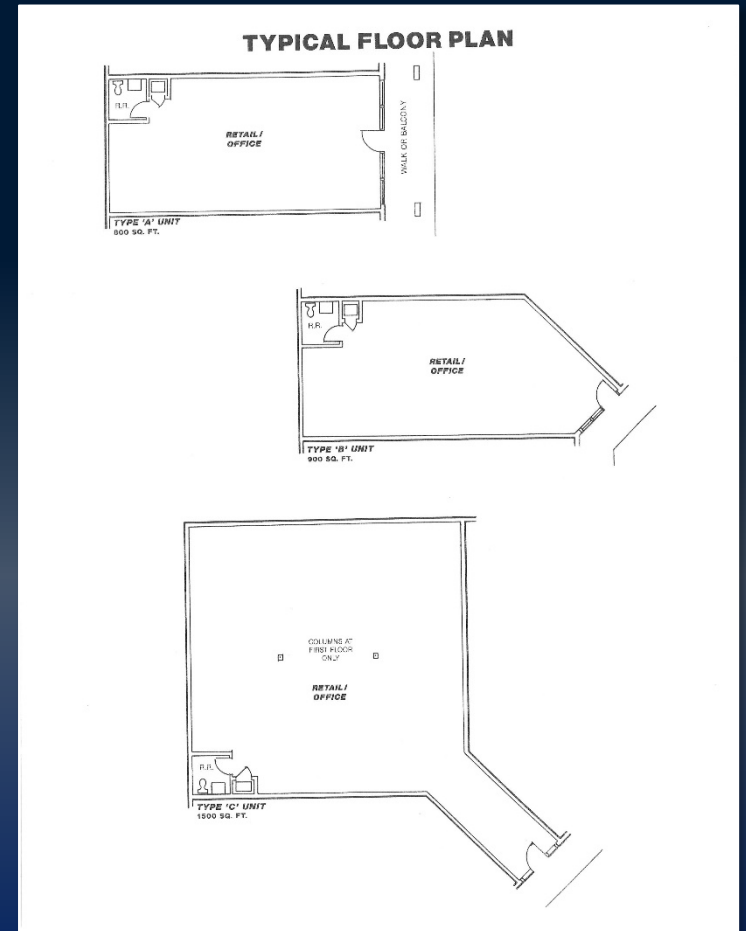
O: 478.750.7507

WWW.THESUMMITGROUPMACON.COM

PROPERTY INFORMATION

Typical Floor Plan

- Type A Unit: 800 SF
- Type B Unit: 900 SF
- Type C Unit: 1,500 SF
- Type D Unit: 2,700 SF (Professional Office Suite)
 - Receptionist Office
 - Large Waiting Room
 - (2) Private Offices
 - (8+) Multi-use Spaces
 - Break Room
 - (2) Restrooms
- Shared Parking
- Signage available
- Zoned C-2
- Tenant pays liability insurance and all utilities
- Landlord pays property taxes, building insurance, garbage and landscaping



3706 MERCER UNIVERSITY DRIVE
MACON, GA 31204
BIBB COUNTY



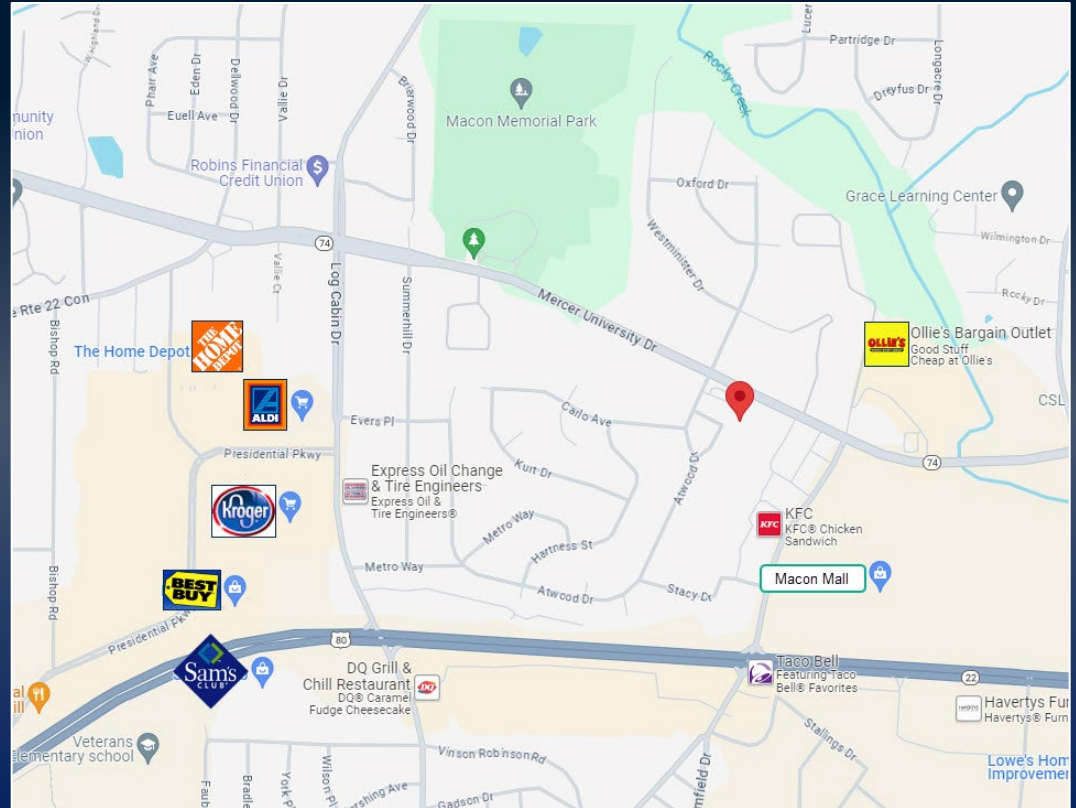
AERIAL/TRAFFIC COUNTS

High traffic area located .25 mile from brand-new Macon Amphitheater, Rhythm & Rally (largest indoor pickleball courts), Macon-Bibb government service offices and other retail and restaurants.

Traffic Counts:

(GDOT 2012 Published Data estimate)

Mercer University Drive – 24,200 vpd



3706 MERCER UNIVERSITY DRIVE
MACON, GA 31204
BIBB COUNTY



EXTERIOR
PHOTOS



3706 MERCER UNIVERSITY DRIVE
MACON, GA 31024
BIBB COUNTY

