

FOR LEASE

4625 W WASHINGTON BLVD

LOS ANGELES, CA 90016



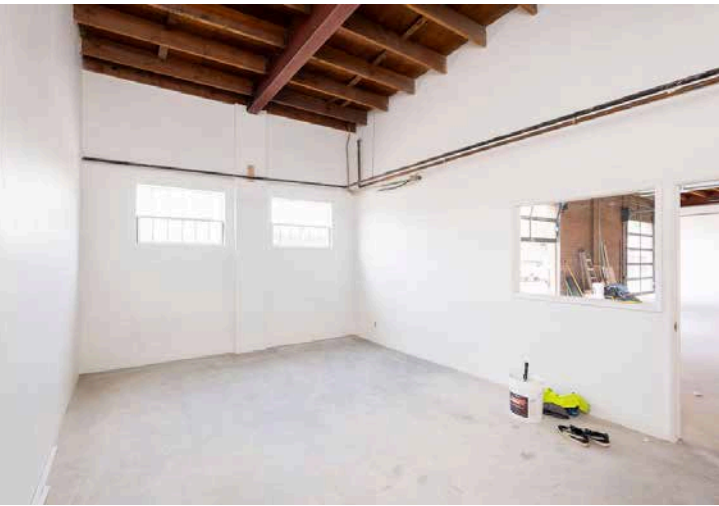
We are pleased to present Creative on Washington, a fully turn-key creative compound that caters to a variety of uses.

With 3 units total, each space was thoughtfully designed and renovated to include HVAC in 100% of the building/units (including warehouse), polished concrete floors throughout, brand new restrooms, glass panel roll-up doors, large lobby entrance, exposed red brick walls, and various quality finishes throughout.

AVAILABILITY

Unit	Space Size	Asking Rate
UNIT A	3,708 SF	\$3.35/SF NNN
UNIT B	4,020 SF	\$3.35/SF NNN
UNIT C	6,270 SF	\$3.35/SF NNN





UNIT A

SPACE SIZE	3,708 SF
PRIVATE ENTRANCE	Yes + lobby entrance
DOCKS	2 dock-high
CLEARANCE	12-15'
PARKING	3-4 spaces
SKYLIGHTS	Yes
SPACE FEATURES	Clear warehouse space + 2 private offices
ASKING RATE	\$3.35/SF NNN

3,708 SF
SPACE SIZE

\$3.35/SF
ASKING RATE (NNN)

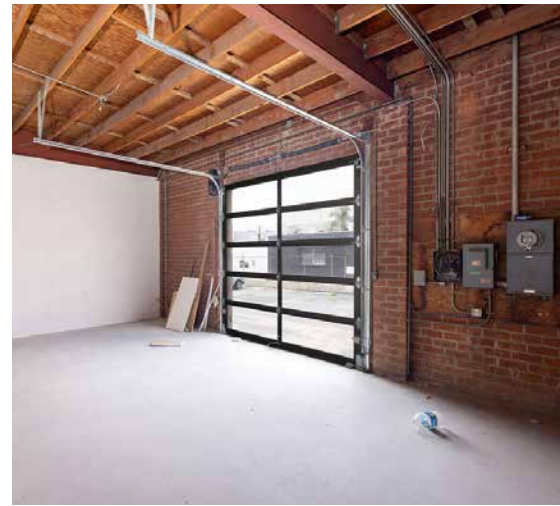
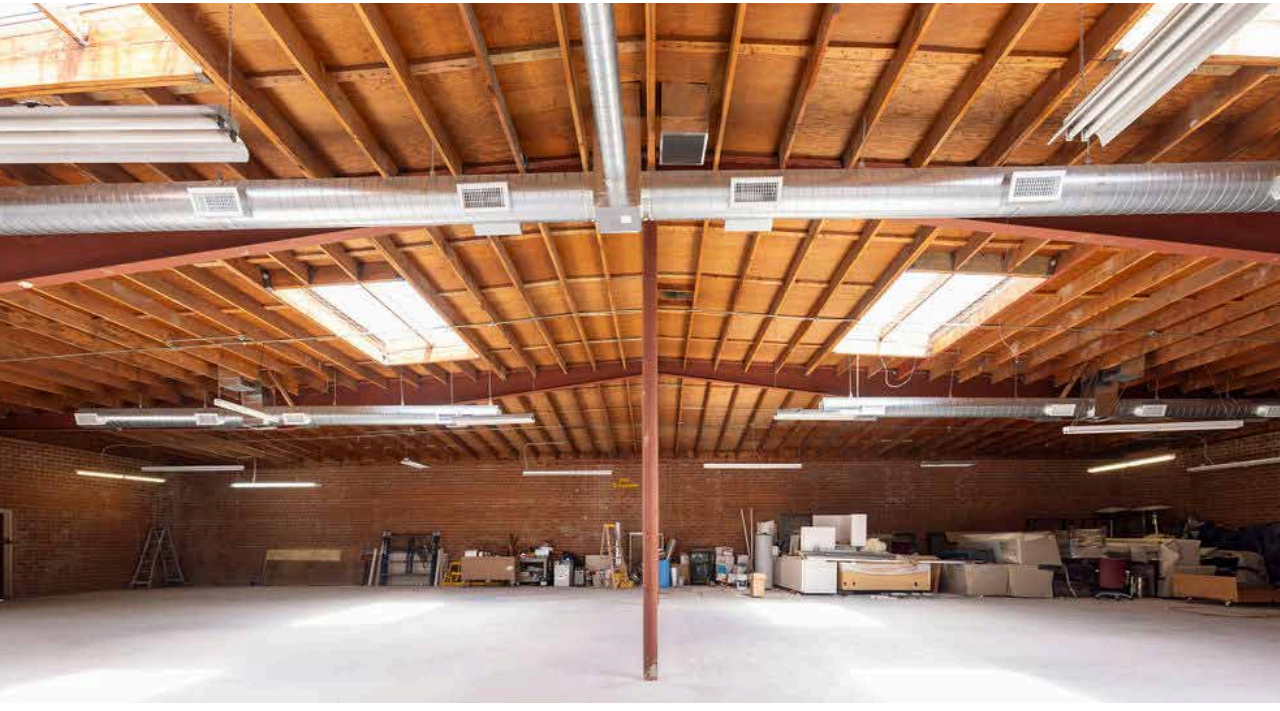


UNIT B

SPACE SIZE	4,020 SF
PRIVATE ENTRANCE	Yes + lobby entrance
DOCKS	N/A
CLEARANCE	12-15'
PARKING	3-4 spaces
SKYLIGHTS	Yes
SPACE FEATURES	Clear warehouse space + 2 private offices
ASKING RATE	\$3.35/SF NNN

4,020 SF
SPACE SIZE

\$3.35/SF
ASKING RATE (NNN)



UNIT C

SPACE SIZE	6,270 SF
PRIVATE ENTRANCE	Yes
DOCKS	1 dock-high
CLEARANCE	12-15'
PARKING	4-6 spaces
SKYLIGHTS	Yes
HVAC	Yes
SPACE FEATURES	Clear warehouse space
ASKING RATE	\$3.35/SF NNN

6,270 SF
SPACE SIZE

\$3.35/SF
ASKING RATE (NNN)



SUBJECT
PROPERTY

DTLA



4625 W WASHINGTON BLVD

For more information on this property, please contact

CASEY LINS
 714.333.6768
 casey.lins@kiddermathews.com
 LIC N° 01902650

KIDDER.COM

This information supplied herein is from sources we deem reliable. It is provided without any representation, warranty, or guarantee, expressed or implied as to its accuracy. Prospective Buyer or Tenant should conduct an independent investigation and verification of all matters deemed to be material, including, but not limited to, statements of income and expenses. Consult your attorney, accountant, or other professional advisor.

