

926

BROADWAY

FOR LEASE

SANTA MONICA STREETFRONT RETAIL SPACE



DAVID GHERMEZIAN

SENIOR MANAGING DIRECTOR

t 310-407-6573 | david.ghermeszian@nmrk.com

CA RE Lic. #01084422

JONATHAN DADOURIAN

ASSOCIATE DIRECTOR

t 310-407-6567 | jonathan.dadourian@nmrk.com

CA RE Lic. #01858129

REBECCA LINCK

TRANSACTION SERVICES SPECIALIST

t 310-407-6581 | rebecca.linck@nmrk.com

CA RE Lic. #02228527

DEANNA LINCK

ASSOCIATE

t 213-596-2299 | deanna.linck@nmrk.com

CA RE Lic. # 02180961

926

BROADWAY



±1,550-±1,650 SF

Unit 930-A: 1,650 SF

Unit 930-B: 1,550 SF

AVAILABLE SPACE



\$3.75/SF NNN

ASKING RATE



8 Spaces

PARKING

PROPERTY HIGHLIGHTS

- Retail space located on the ground floor of mixed-use apartment building
- Prime Santa Monica location, just east of Lincoln Blvd and nearby to Downtown Santa Monica
- Parking available on-site, and ample street parking along Broadway
- One block from Bay Cities, Bodega, and Sweetfin
- Nearby to many new apartment developments
- There are over 45,000 total units in Santa Monica and approximately 650 units under construction
- Premises located in a mixed-use project consisting of 48 apartment units.



926
BROADWAY

SUITE 930-A IMAGES

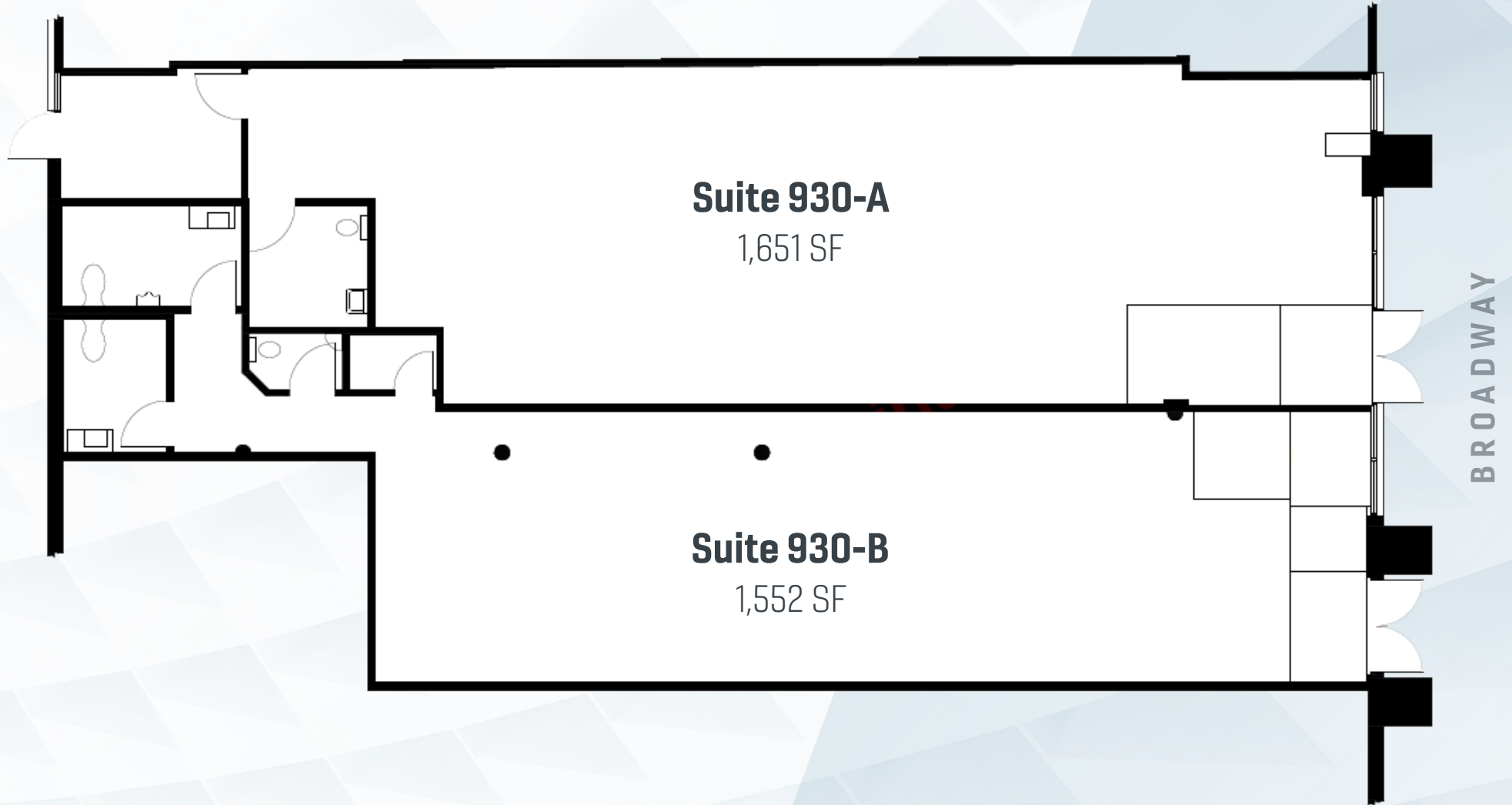


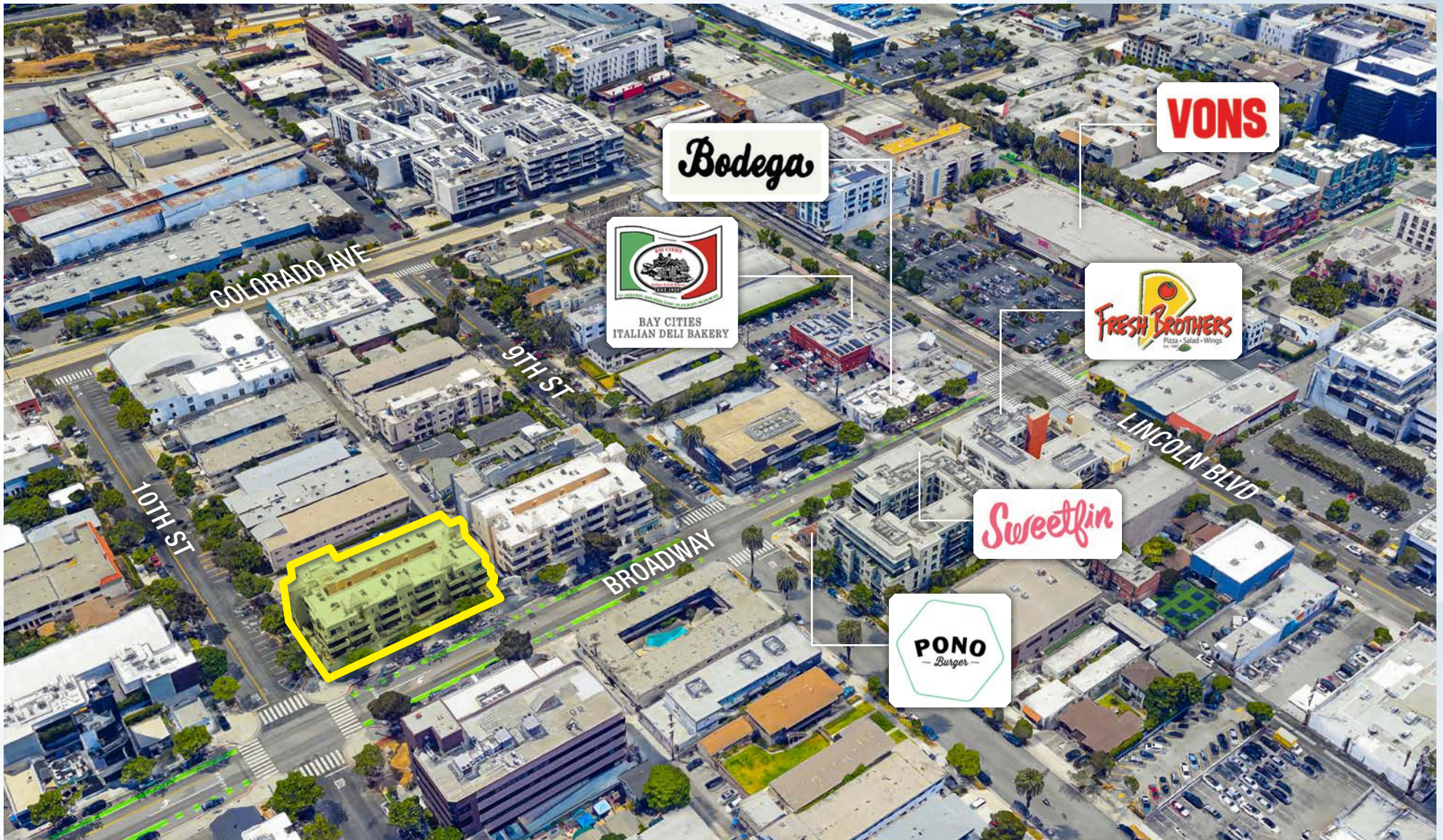
SUITE 930-B IMAGES



926
BROADWAY

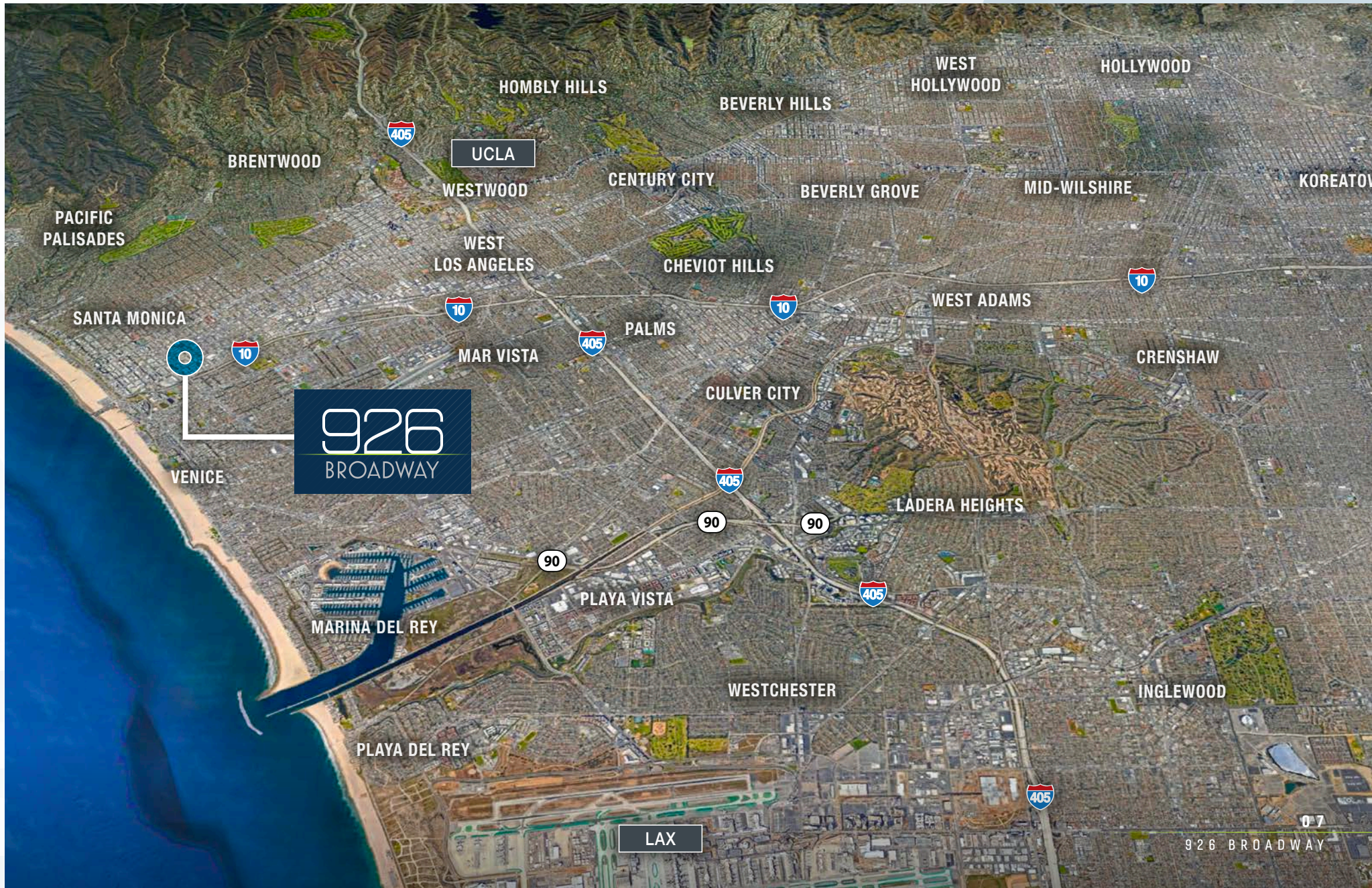
FLOORPLANS





926 BROADWAY

REGIONAL MAP



926
BROADWAY

NEIGHBORHOOD AMENITIES



926
BROADWAY

NEIGHBORING APARTMENT DEVELOPMENTS



LINCOLN SANTA MONICA
1447 Lincoln Blvd
213 Units



910-920 BROADWAY
(Under Construction)
48 Units



MAGNOLIA VILLAS
1445 10th St
40 Units



710 BROADWAY
(Under Construction)
260 Units



1550 LINCOLN BLVD
100 Units



THE CATHERINE-PHASE I & II
1601 Lincoln Blvd
280 Units

There are over
45,000 total units
in Santa Monica
and **approximately**
650 units
under construction.

926
BROADWAY

926

BROADWAY

FOR LEASE

DAVID GHERMEZIAN
SENIOR MANAGING DIRECTOR
t 310-407-6573
david.ghermezian@nmrk.com
CA RE Lic. #01084422

JONATHAN DADOURIAN
ASSOCIATE DIRECTOR
t 310-407-6567
jonathan.dadourian@nmrk.com
CA RE Lic. #01858129

REBECCA LINCK
TRANSACTION SERVICES SPECIALIST
t 310-407-6581
rebecca.linck@nmrk.com
CA RE Lic. #02228527

DEANNA LINCK
ASSOCIATE
t 213-596-2299
deanna.linck@nmrk.com
CA RE Lic. # 02180961

Newmark | 1875 Century Park East, Suite 1380 | Los Angeles, CA 90067 | Corporate License #01355491



2023 DEMOGRAPHICS	1 MILE	2 MILES	3 MILES
TOTAL POPULATION	43,439	105,177	198,422
AVG HOUSEHOLD INCOME	\$159,929	\$171,853	\$177,786
EMPLOYEE POPULATION	57,316	100,424	158,351
PER CAPITA INCOME	\$87,889	\$78,874	\$88,850