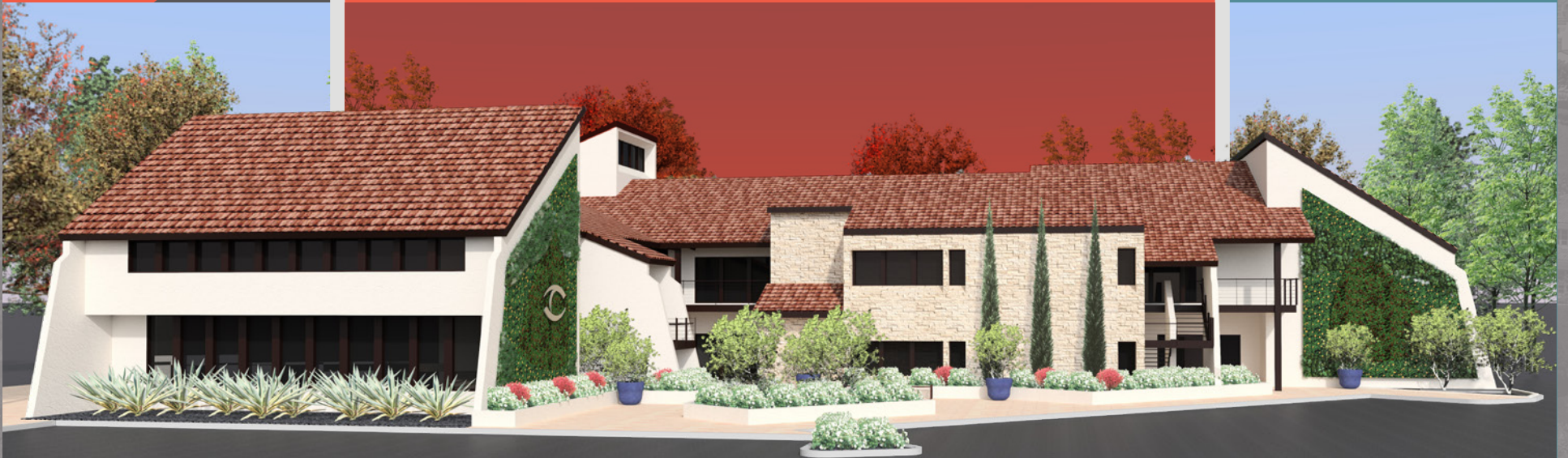


# SOUTH COUNTY MEDICAL CENTER

25200 LA PAZ RD, LAGUNA HILLS CA



\*Conceptual Rendering. Subject to Change.

TOP FLOOR MEDICAL OFFICE SPACE

2,000 SF - 9,135 SF AVAILABLE FOR LEASE

# KEY FEATURES

TOP FLOOR AVAILABLE FOR LEASE



\*Alternate conceptual rendering. Subject to Change.



Prime South Orange  
County Location



Freeway Visible



Abundant Free  
Surface Parking



Flexible Sizes and  
Configurations  
Available



Exterior Suite  
Entrances



Building, Common  
Area and Landscape  
Renovations in  
Progress



Near Restaurants,  
Retail and Amenities



Building and  
Monument Signage  
Opportunities  
Available



Close Proximity to  
Saddleback and  
Mission Hospital



2-OR Surgery Center  
Located Onsite

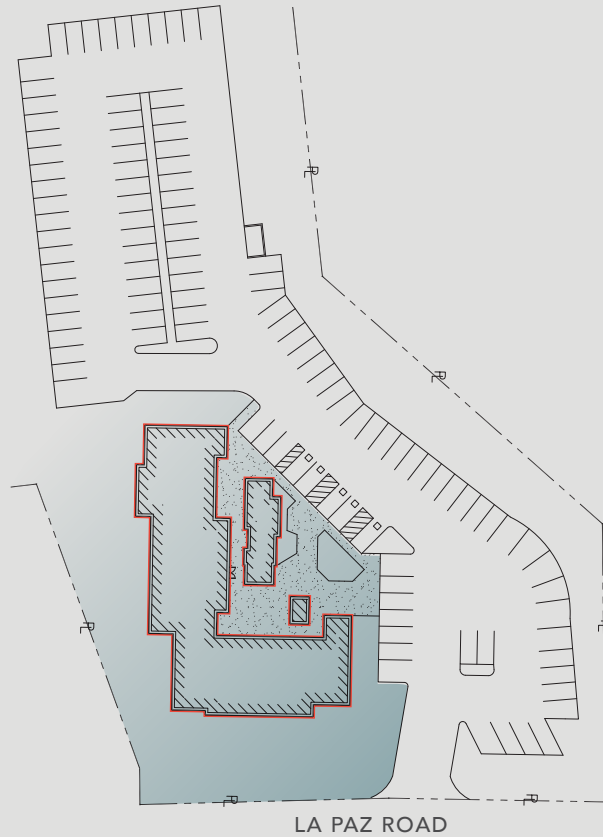


25200



# THE AREA

Situated in the San Joaquin Hills and offers stunning views of the surrounding mountains and valleys, Laguna Hills offers a high quality of life, with access to world-class medical facilities, shopping centers such as Saddleback and Mission Hospital, and entertainment venues. It is a thriving city that offers its residents a perfect blend of natural beauty, modern amenities, and a strong sense of community.



# 25200

LA PAZ RD, LAGUNA HILLS CA

## TOP FLOOR MEDICAL OFFICE SPACE



A E R I A L



## SOUTH COUNTY MEDICAL CENTER

25200 LA PAZ RD, LAGUNA HILLS CA



# SOUTH COUNTY MEDICAL CENTER

25200 LA PAZ RD, LAGUNA HILLS CA



© 2023 CBRE, Inc. All rights reserved. This information has been obtained from sources believed reliable, but has not been verified for accuracy or completeness. You should conduct a careful, independent investigation of the property and verify all information. Any reliance on this information is solely at your own risk. CBRE and the CBRE logo are service marks of CBRE, Inc. All other marks displayed on this document are the property of their respective owners, and the use of such logos does not imply any affiliation with or endorsement of CBRE. Photos herein are the property of their respective owners. Use of these images without the express written consent of the owner is prohibited.

## FOR MORE INFORMATION, PLEASE CONTACT:

### John Scruggs

First Vice President

Lic. 01796826

+1 949 842 5897

[John.Scruggs@cbre.com](mailto:John.Scruggs@cbre.com)

### Steven Lewallen

Vice President

Lic. 01068340

+1 949 725 8414

[Steven.Lewallen@cbre.com](mailto:Steven.Lewallen@cbre.com)

### Daniel Nabavi

Senior Associate

Lic. 02069315

+1 714 225 7429

[Daniel.Nabavi@cbre.com](mailto:Daniel.Nabavi@cbre.com)

### Ryan Dopp

Senior Associate

Lic. 01902830

+1 949 725 8409

[Ryan.Dopp@cbre.com](mailto:Ryan.Dopp@cbre.com)

# CBRE