



Windermere Plaza

Building 3, Units For Sale or Lease

This area of Southwest Edmonton is home to one of the most affluent neighbourhoods in the city, multiple power centres drawing major traffic for retailers and businesses, and large scale home development growing the city's Southwest. Windermere Plaza is the hub for neighbourhood residents to see their medical, health and wellness, and professional businesses all in one place. This is an opportunity to own or lease and be a part of this prosperous community.



Close access to Anthony Henday Drive



Abundance of neighbourhood amenities



Growing community



Ideally located in one of South Edmonton's most desirable neighbourhoods

**Get more
information**

Peter Schwann
Principal
+1 780 970 7228
peter.schwann@avisonyoung.com

avisonyoung.com

For Sale / Lease

Offering Summary

For Lease

Area Available: 2,350 sf
(Usable area, subject to BOMA industry standard gross up)

Basic Rent: Negotiable

Operating Costs: \$21.09 + utilities
(2023 Estimate)

Parking: 6 titled underground parking stalls
144 surface parking stalls,
free of charge

For Sale

Asking Price: Negotiable

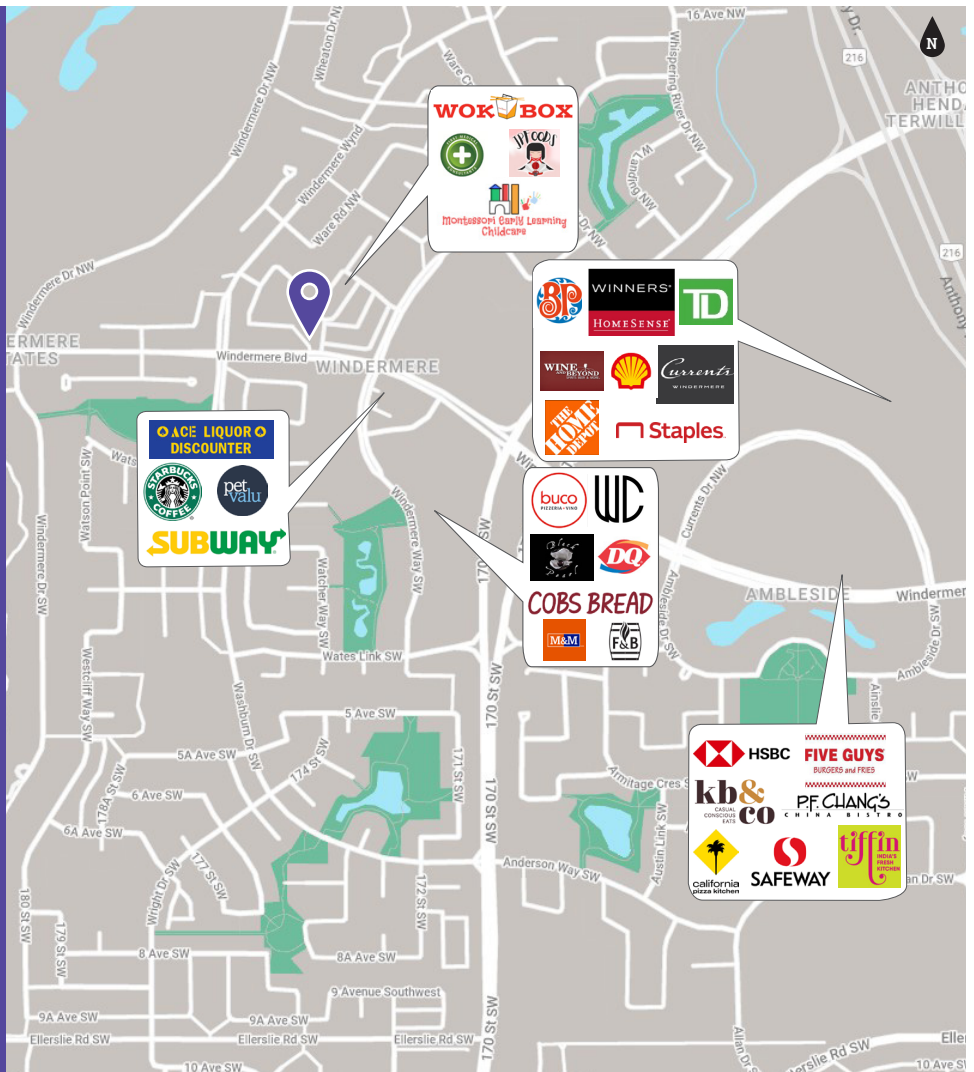
Monthly Condo Fees: \$1,812 + utilities
(2023)

Monthly Property Tax: \$2,154
(2023)

Parking: 6 titled underground parking stalls

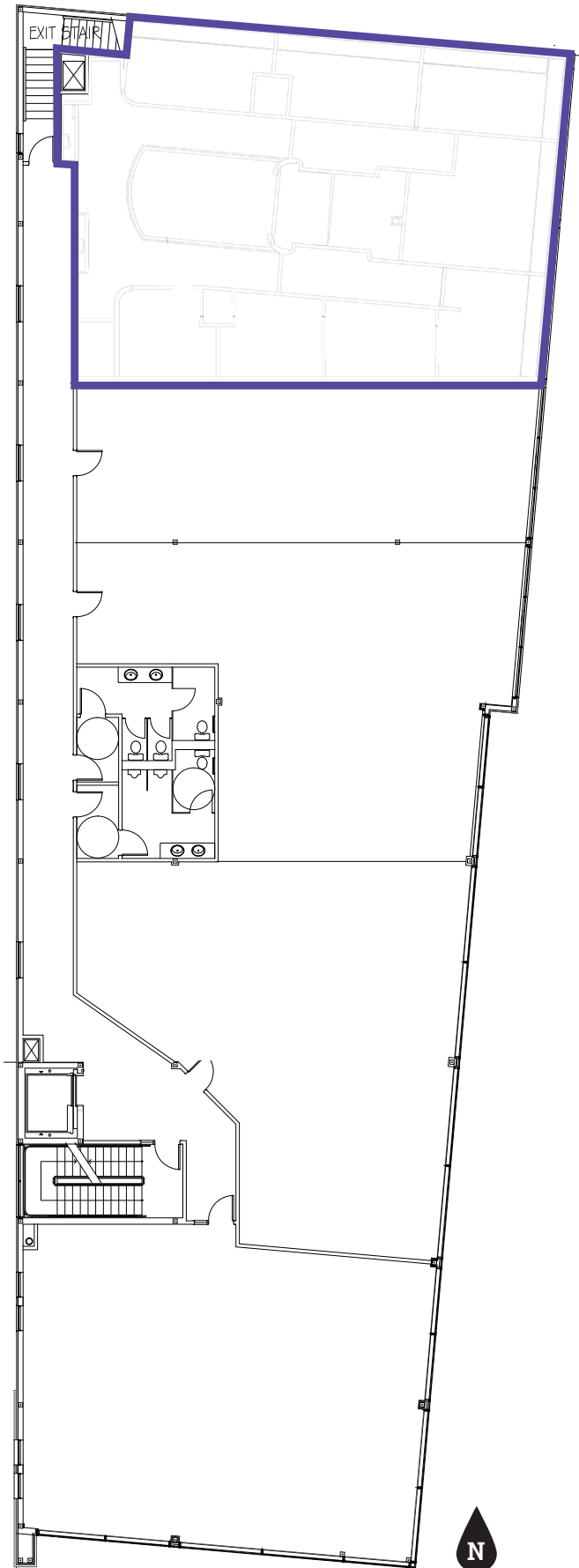
Join Existing Tenants:

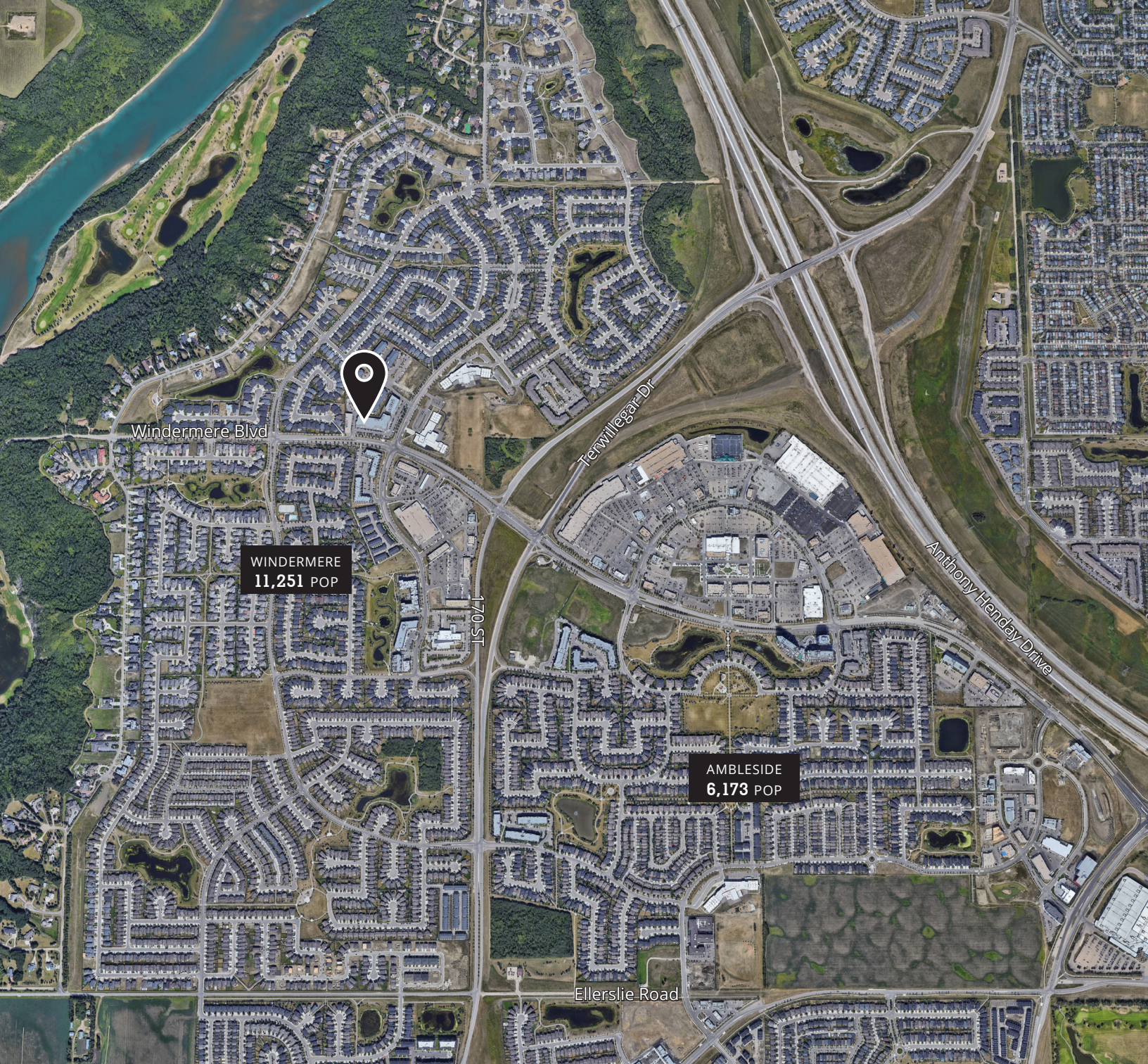
- Leading Edge Physiotherapy
- Caliber Insurance Brokers
- Navina Yoga
- Flossophy Dental
- Forever Young Laser Skin Rejuvenation
- Windermere Plaza Medical Clinic
- Dermatology Cosmetic Centre Dr. Myba Taher
- Windermere Pharmacy
- Helix Psychology
- Windermere Daycare
- Southwest Denture Centre
- Windermere Music Academy



Floor Plan

5586 Windermere Blvd
Edmonton, AB





(2019 Census)

Get more information

Peter Schwann
Principal
+1 780 970 7228
peter.schwann@avisonyoung.com

© 2023 Avison Young Commercial Real Estate Services, LP. All rights reserved.
E. & O.E.: The information contained herein was obtained from sources which we deem reliable and, while thought to be correct, is not guaranteed by Avison Young.
Suite 2100, 10111 - 104 Avenue | Edmonton, AB | +1 780 428 7850

