



For Lease

Retail / Medical / Office

1393-1457 W Schaumburg Rd., Schaumburg, IL 60194

Schaumburg Plaza

Retail leasing opportunity at Schaumburg Plaza. Center has spaces ranging from 630 to 15,000 square feet. New tenants under construction: OutCold Burgers, BroasTea, The Secret Kitchen, WellGroomed Bridal Boutique.

Benefit from strong demographics, including an average household income over \$100,000, a median age of 39.7, and a population of 240,000 within 5 miles. Join successful tenants like Prima Deli, Cardinal Liquors, Little Sicily Pizzeria, Schaumburg Music Academy, Art Fuzd, Mad Men Barbershop, Jawhra Salon, Manny's Burrito Express, Subway, State Farm Insurance, Sprinkles Ice Cream Shoppe, and Laundry World.

Contact us:

Brad Belden

Senior Vice President

847 698 8232

Brad.Belden@colliers.com

Zach Ofner

Associate

847 444 5704

Zach.Ofner@Colliers.com

This document/email has been prepared by Colliers for advertising and general information only. Colliers makes no guarantees, representations or warranties of any kind, expressed or implied, regarding the information including, but not limited to, warranties of content, accuracy and reliability. Any interested party should undertake their own inquiries as to the accuracy of the information. Colliers excludes unequivocally all inferred or implied terms, conditions and warranties arising out of this document and excludes all liability for loss and damages arising there from. This publication is the copyrighted property of Colliers and /or its licensor(s). © 2022. All rights reserved.

Colliers

www.colliers.com/en/countries/united-states/cities/chicago/chicago-retail-sales-and-leasing-team

Property Summary



Property Highlights

- Prime location with strong demographics
- 327 parking spaces (4.86 spaces per 1,000 sq ft)
- Traffic counts over 35K along Schaumburg Rd.
- Significant frontage on Schaumburg Rd.
- Half a mile from Schaumburg High School
- Average Household Income over \$100K
- 240,000 population within 5 miles
- Pylon Sign

Property Description

Retail leasing opportunity at Schaumburg Plaza. Center has spaces ranging from 630 to 15,000 square feet, and high visibility along Schaumburg Rd. This prime location is ideal for businesses. Join successful tenants like Prima Deli, Cardinal Liquors, Little Sicily Pizzeria, Schaumburg Music Academy, Art Fuzd, Mad Men Barbershop, Jawhra Salon, Manny's Burrito Express, Subway, State Farm Insurance, Sprinkles Ice Cream Shoppe, and Laundry World. Don't miss your chance to be part of this thriving community. Contact us now to secure your spot at Schaumburg Plaza.

Offering Summary

NNN Lease Rate	\$12.50 - \$18.50 SF/yr (NNN)
Available SF:	1,500 - 5,683 SF
Building Size:	66,993 SF
Taxes:	\$5.50 SF/yr
Expenses:	\$3.25 SF/yr
Zoning:	B-2

Spaces	NNN Lease Rate	Size
1413 W. Schaumburg Rd.	\$15.00 SF/yr	1,500 SF
1415 W. Schaumburg Rd.	\$15.00 SF/yr	1,500 SF
1425 W. Schaumburg Rd.	\$16.00 SF/yr	1,500 SF
1439-41 W. Schaumburg Rd.	\$14.00 SF/yr	1,800 SF
1447-51 W. Schaumburg Rd.	\$13.50 SF/yr	5,683 SF

Brad Belden
Senior Vice President
847 698 8232
Brad.Belden@colliers.com

Zach Ofner
Associate
847 444 5704
Zach.Ofner@Colliers.com

For Lease 1393-1457 W Schaumburg Rd., Schaumburg, IL 60194

[View Online](#)

[View Video](#)

[Take A Tour](#)

Site Plan



SUITE	TENANT	SQ-FT
1393-99	LAUNDRY WORLD	4,958
1401	OUTCOLD BURGERS	750
1403	STATE FARM INSURANCE	630
1405	SPRINKLER ICE CREAM SHOP	900
1407-1409	LITTLE SICILY PIZZERIA	3,000
1411	THE SECRET KITCHEN	2,750
1413	AVAILABLE	1,500
1415	AVAILABLE	1,500
1417	JAWHRA A.W.BEAUTY SALON	1,500
1419	BROASTEA	1,500
1421	CARDINAL LIQUORS	3,300
1423-1423B	MARTIAL ARTS	3,000
1425	AVAILABLE	1,500
1427	SUBWAY	1,200
1429 A&B	SCHAUMBURG MUSIC	2,200
1433	M.MEDRANO & M.LUNA	1,200
1437	CLARK FOODS	1,200
1439-1441	AVAILABLE	1,800
1447-1451	AVAILABLE	5,683
1457A	ART FUZD	1,744
1457B	WELLGROOMED	1,686
1457C	MAD MEN BARBERSHOP	1,675

Brad Belden
Senior Vice President
847 698 8232
Brad.Belden@colliers.com

Zach Ofner
Associate
847 444 5704
Zach.Ofner@Colliers.com

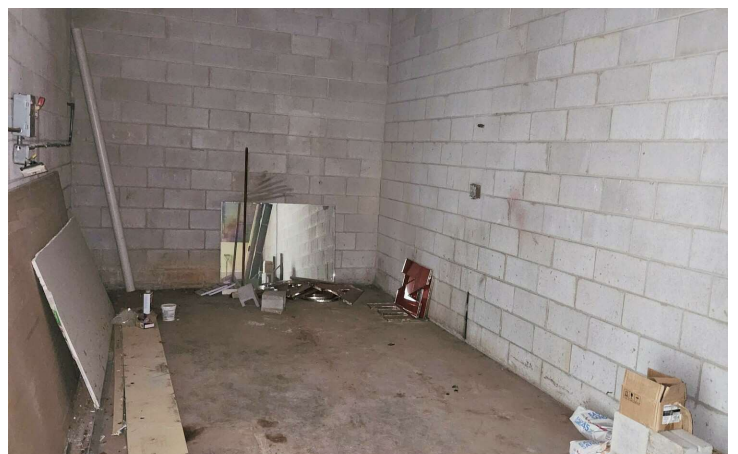
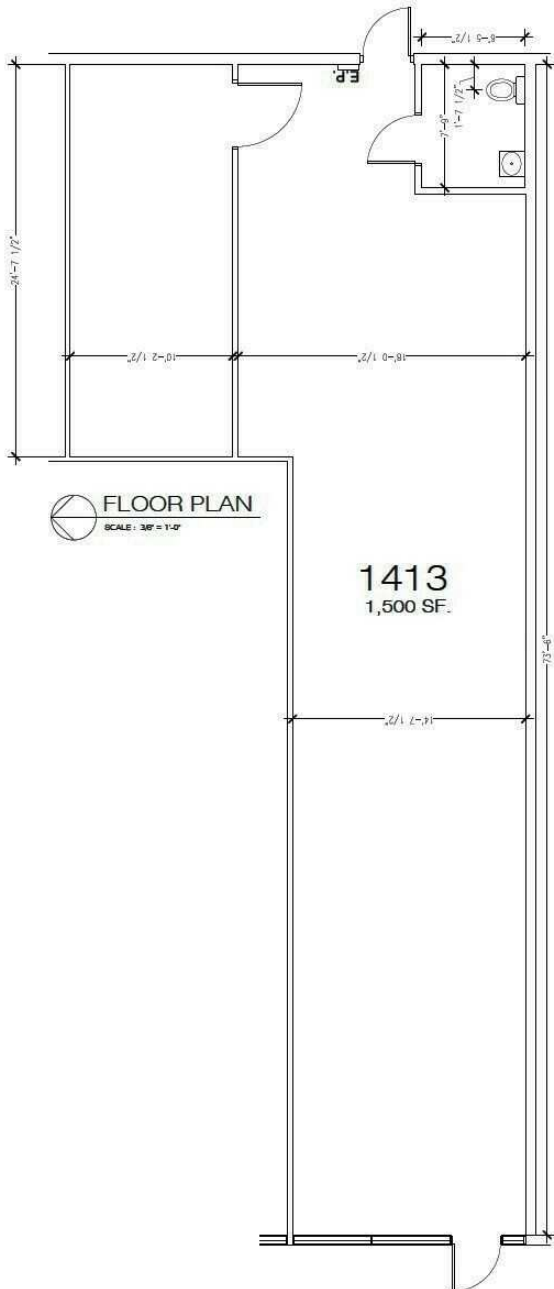
For Lease 1393-1457 W Schaumburg Rd., Schaumburg, IL 60194

[View Online](#)

[View Video](#)

[Take A Tour](#)

Unit 1413 - 1,500 sq.ft.



Brad Belden
Senior Vice President
847 698 8232
Brad.Belden@colliers.com

Zach Ofner
Associate
847 444 5704
Zach.Ofner@Colliers.com

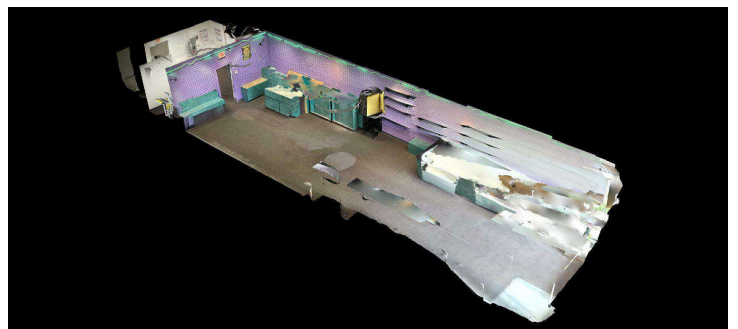
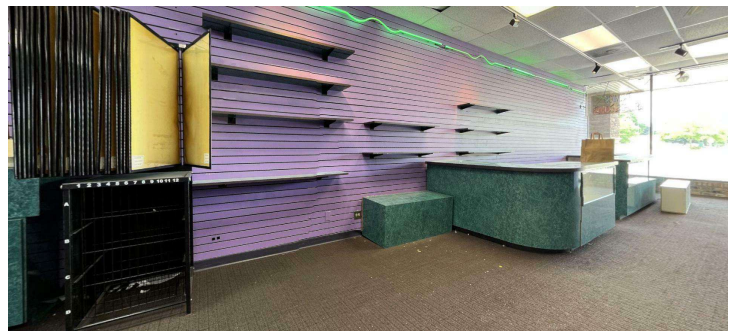
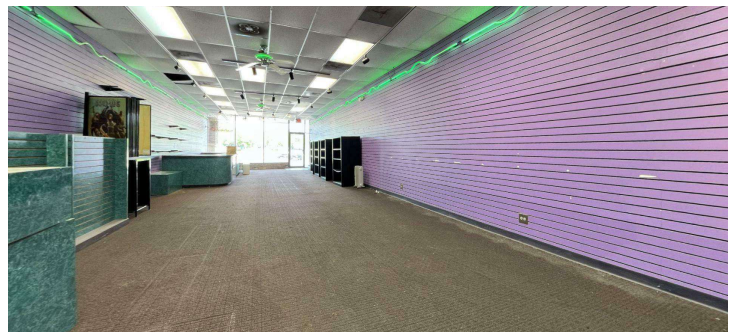
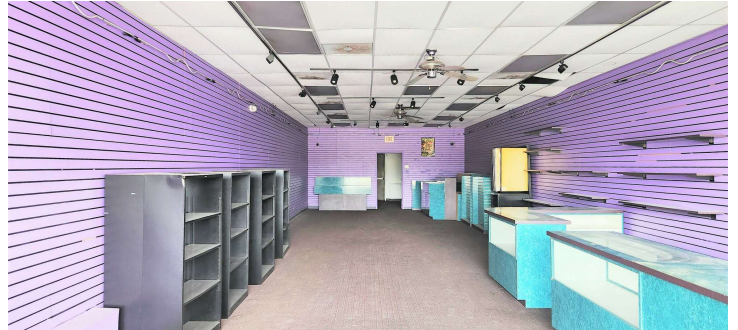
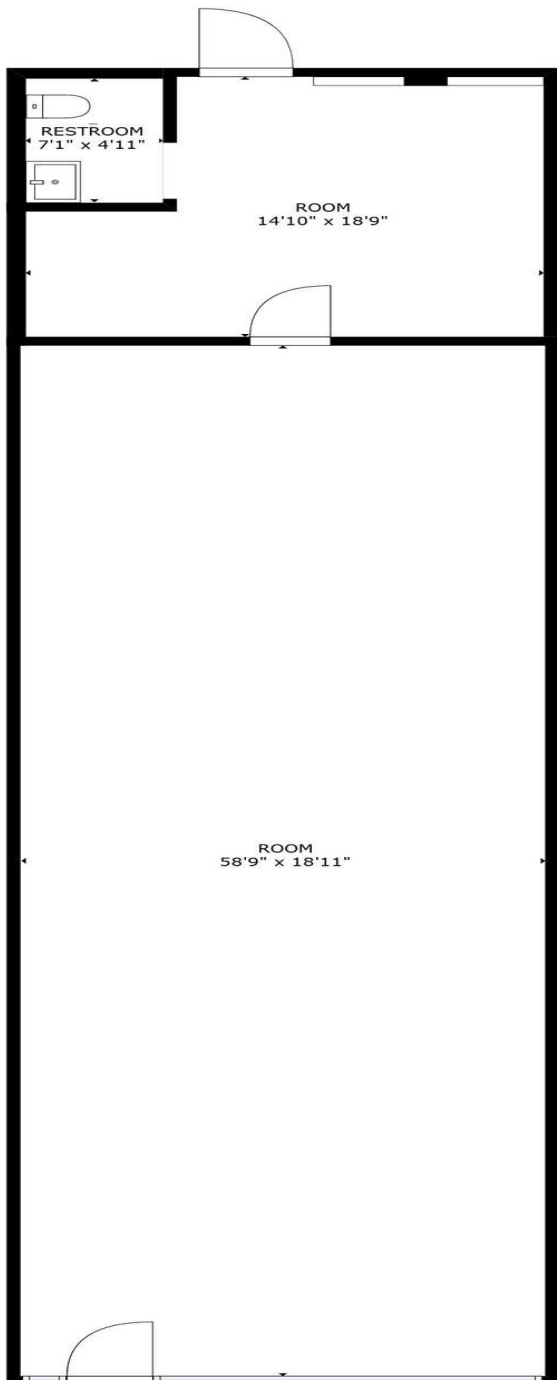
For Lease 1393-1457 W Schaumburg Rd., Schaumburg, IL 60194

[▶ View Online](#)

[▶ View Video](#)

[▶ Take A Tour](#)

Unit 1415 - 1,500 sq.ft.



Brad Belden
Senior Vice President
847 698 8232
Brad.Belden@colliers.com

Zach Ofner
Associate
847 444 5704
Zach.Ofner@Colliers.com

www.colliers.com/en/countries/united-states/cities/chicago/chicago-retail-sales-and-leasing-team



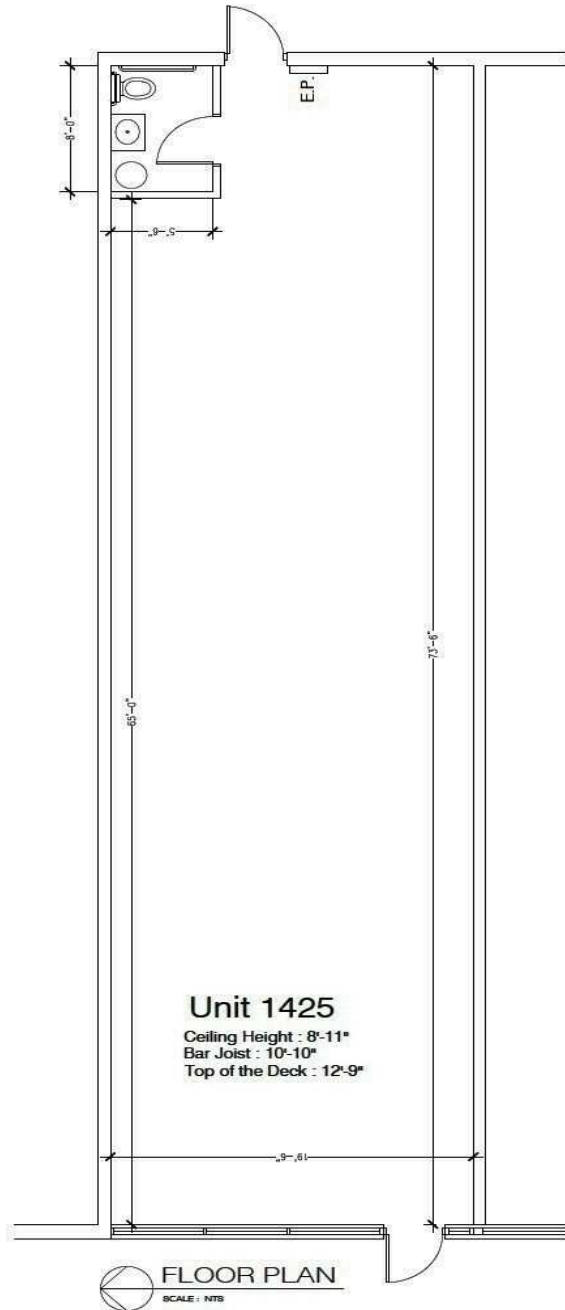
For Lease 1393-1457 W Schaumburg Rd., Schaumburg, IL 60194

[View Online](#)

[View Video](#)

[Take A Tour](#)

Unit 1425 - 1,500 sq.ft.



Brad Belden
Senior Vice President
847 698 8232
Brad.Belden@colliers.com

Zach Ofner
Associate
847 444 5704
Zach.Ofner@Colliers.com

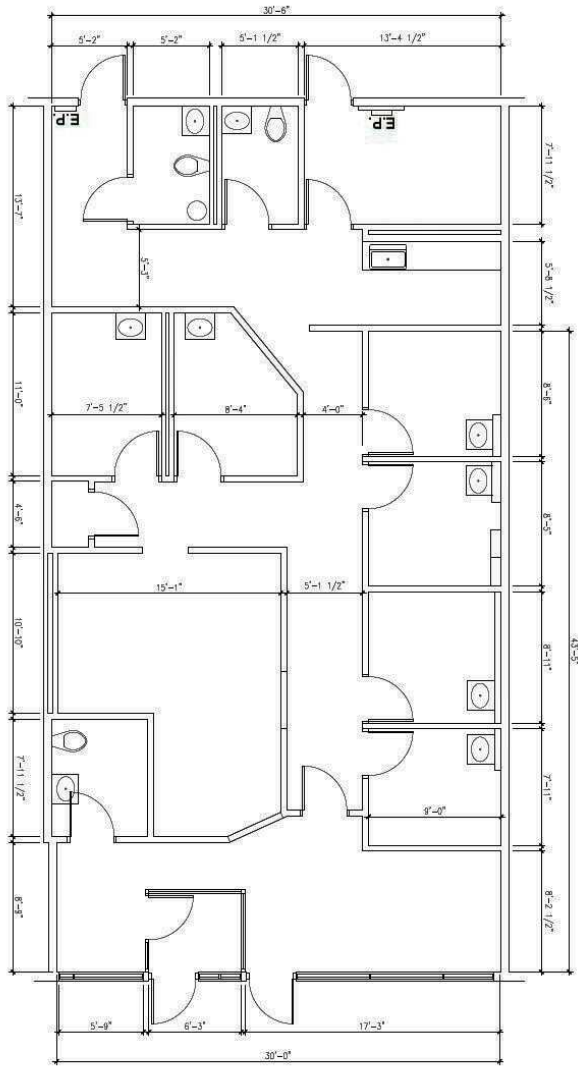
For Lease 1393-1457 W Schaumburg Rd., Schaumburg, IL 60194

[▶ View Online](#)

[▶ View Video](#)

[▶ Take A Tour](#)

Unit 1439-1441 - 1,800 sq.ft.



SCHAUMBURG PLAZA
1439-1441
1,800 SF

EXISTING FLOOR PLAN
SCALE: 3/8" = 1'-0"



Brad Belden
Senior Vice President
847 698 8232
Brad.Belden@colliers.com

Zach Ofner
Associate
847 444 5704
Zach.Ofner@Colliers.com

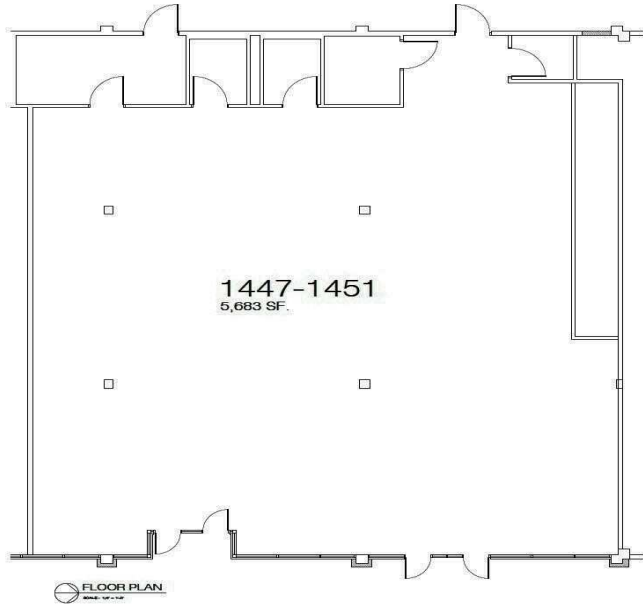
For Lease 1393-1457 W Schaumburg Rd., Schaumburg, IL 60194

[View Online](#)

[View Video](#)

[Take A Tour](#)

Unit 1447-1451 - 5,683 sq.ft. w/ basement space



Brad Belden
Senior Vice President
847 698 8232
Brad.Belden@colliers.com

Zach Ofner
Associate
847 444 5704
Zach.Ofner@Colliers.com

www.colliers.com/en/countries/united-states/cities/chicago/chicago-retail-sales-and-leasing-team



Property & Area Highlights



630 sf - 15K sf

Space Size



\$104K

Average HH Income



94K

Households



327

Parking Spaces



\$274K

Median Home Value



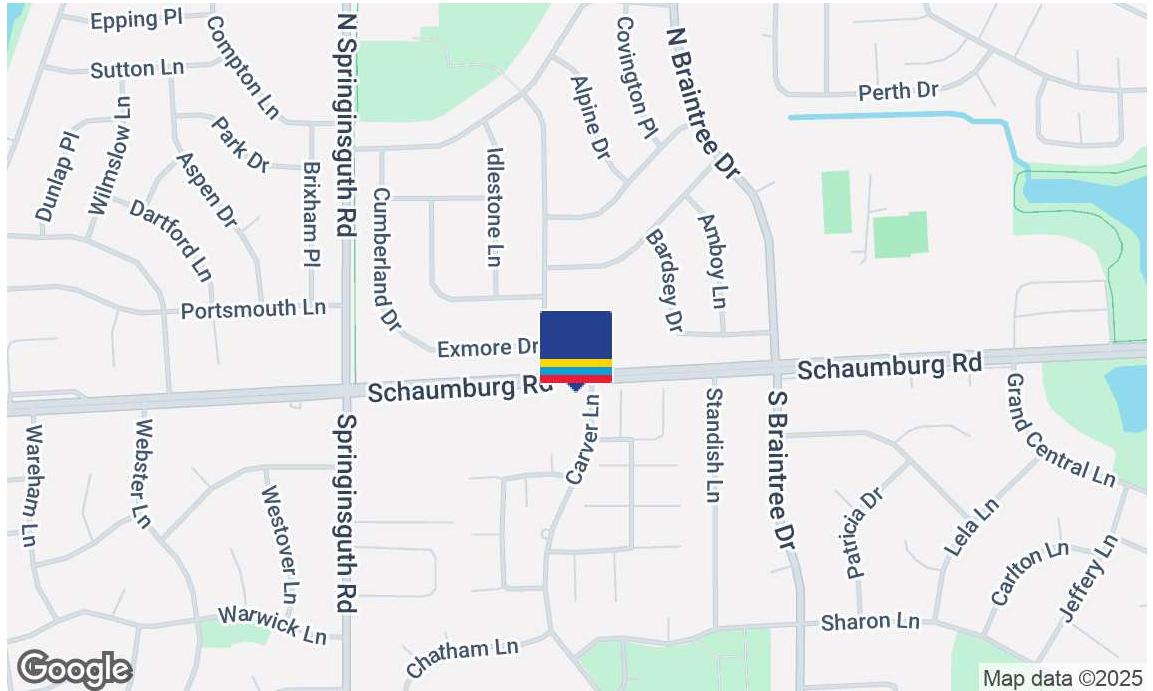
249K

Population



35K ADT

Traffic Counts



Location Overview

Schaumburg is in Cook County and is one of the best places to live in Illinois. One of its most famous attractions is the Woodfield Mall, which is one of the largest shopping centers in the United States. Additionally, there are numerous restaurants, theaters, and other entertainment venues in and around Schaumburg. The population of Schaumburg is known for having a diverse and educated population.

Area Tenants

- Supercuts
- Michael's
- Starbuck's
- Chuck E Cheese
- Walgreen's
- Papa John's
- O'Reilly Auto Parts
- Smoothie King
- FedEx
- Jewel Osco
- Lou Malnati's
- Tony's Fresh Market
- Subway
- Ulta Beauty
- Joann
- American Mattress
- Bucky's
- Panda Express
- Poke Bros.
- Dollar Tree
- Boost Mobile
- Panera Bread
- Portillo's
- Taco Bell
- Dunkin'
- McDonald's
- KFC
- American Freight
- Sally Beauty
- Sonic
- Esporta
- Kohl's

Brad Belden

Senior Vice President

847 698 8232

Brad.Belden@colliers.com

Zach Ofner

Associate

847 444 5704

Zach.Ofner@Colliers.com

Area Retail Tenants



Brad Belden
Senior Vice President
847 698 8232
Brad.Belden@colliers.com

Zach Ofner
Associate
847 444 5704
Zach.Ofner@Colliers.com

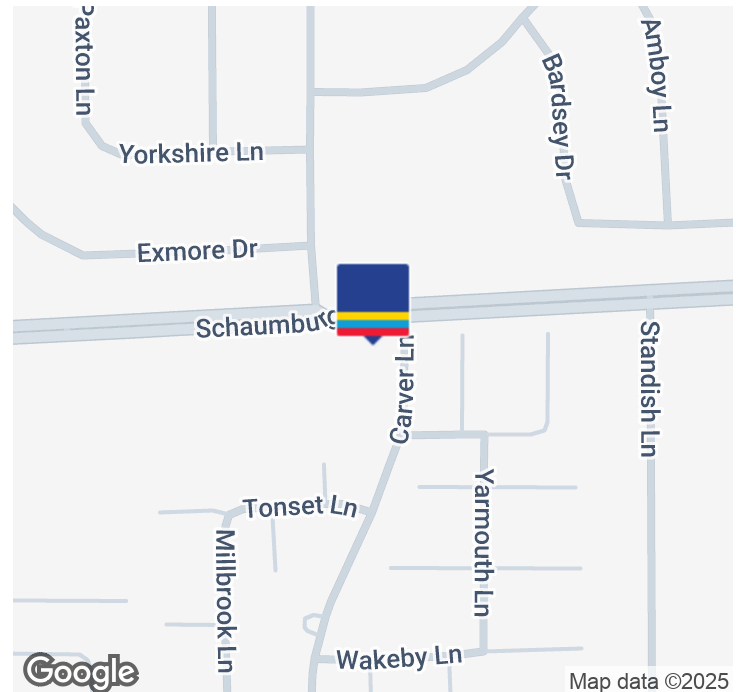
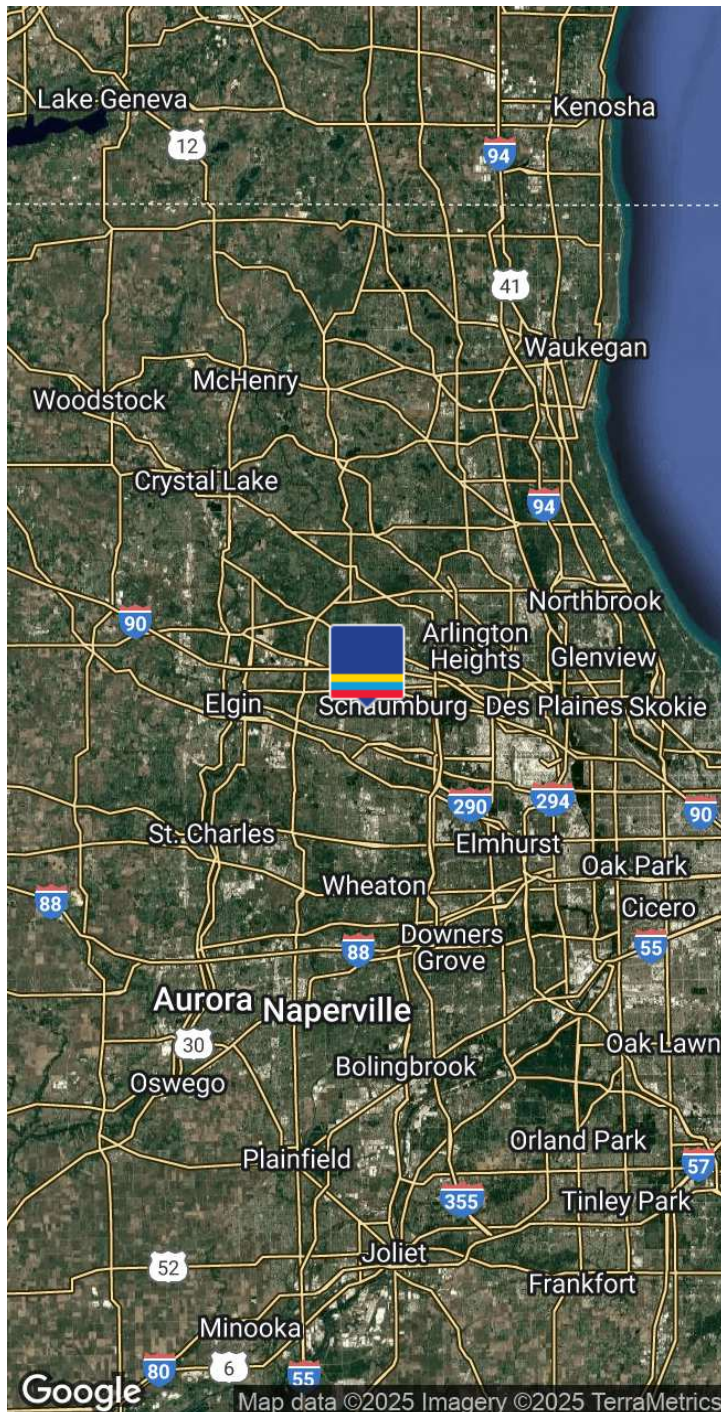
For Lease 1393-1457 W Schaumburg Rd., Schaumburg, IL 60194

[View Online](#)

[View Video](#)

[Take A Tour](#)

Location Map



Demographics	1 Mile	3 Miles	5 Miles
Total population	15,369	131,695	249,609
Median age	42.4	38.5	39.6
Median age (Male)	42.1	37.9	39.0
Median age (Female)	42.8	39.3	40.1
Total households	5,732	48,955	94,137
Total persons per HH	2.7	2.7	2.7
Average HH income	\$103,729	\$90,493	\$99,447
Average house value	\$274,165	\$232,032	\$255,838

Brad Belden
Senior Vice President
847 698 8232
Brad.Belden@colliers.com

Zach Ofner
Associate
847 444 5704
Zach.Ofner@Colliers.com