



AUSTIN INDUSTRIAL PARK

5214 Burleson Road, Austin, TX 78744

1,250 - 3,750 SF OFFICE/WAREHOUSE - FOR LEASE



- **1,250 - 3,750 SF Office/Warehouse Space FOR LEASE**
- Perfect for small to midsize industrial or warehouse space
- Grade-level roll-up doors on most spaces!
- Easy access to Highway 71, IH-35, 130 Toll Road, and the Austin-Bergstrom Int'l Airport
- Conveniently located on Burleson Rd. just off of Highway 71
- 24/7 Access



Site Plan

Austin Industrial Park



AVAILABILITY	
Suite 106/107	2,000 SF
Suite 110/113	2,500 SF
Suite 206/207	2,000 SF
Suite 407	1,250 SF
Suite 501/504	3,750 SF
Suite 607	1,250 SF

For more information 502 East 11th St., Suite 400

please contact:

Austin, Texas 78701

Nick Tarantino, CCIM

Tel (512) 302-4500

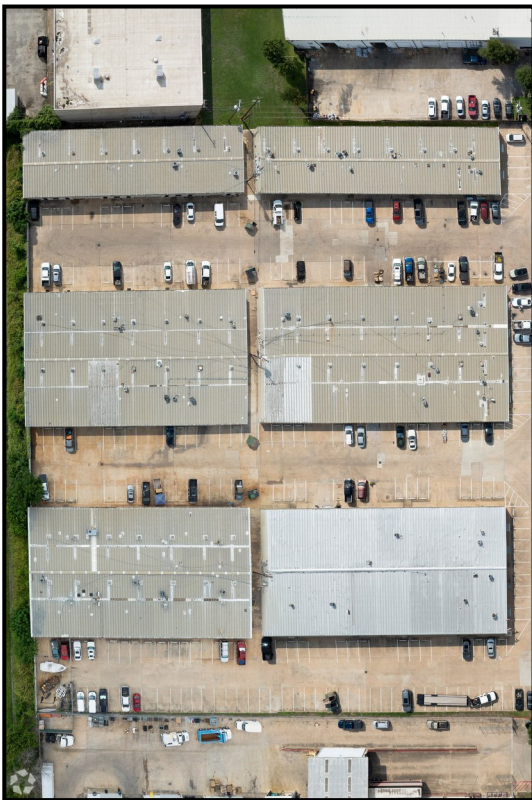
nick@tarantino.com

www.tarantino.com

Chad Folts

cfolts@tarantino.com





For more information please contact:

Nick Tarantino, CCIM nick@tarantino.com

Chad Folts cfolts@tarantino.com

Tel (512) 302-4500

www.tarantino.com



DEMOGRAPHICS (2024)

MILE(S)	1	3	5
Total Population	6,855	119,208	290,392
Total Households	3,012	50,515	129,410
Average HH Income	\$72,779	\$81,696	\$101,956

NEARBY



CONTACT US FOR MORE INFORMATION ABOUT THIS PROPERTY:

Nick Tarantino, CCIM
 (512) 302 - 4500
 nick@tarantino.com

Chad Folts
 (512) 302 - 4500
 cfolts@tarantino.com