



Freezer/Cooler Warehouse For Lease

Andy Lubinski, SIOR

Unlicensed in SD
Vice Chair
+1 952 221 8067
andy.lubinski@colliers.com

Aaron Whitmore

Unlicensed in SD
Associate Vice President
+1 612 963 1377
aaron.whitmore@colliers.com

Ethan Haglund

Unlicensed in SD
Senior Associate
+1 952 200 6199
ethan.haglund@colliers.com

Tina Volpe

SD License# 20307
+1 952 897 7793
tina.volpe@colliers.com

Turner Wisheart

Unlicensed in SD
OnPace Cold
+1 770 654 4334
turner.wisheart@onpacepartners.com

2300 E Rice St
Sioux Falls, SD 57103

151,077 SF Available For Lease

- Over 15,000 pallet positions
- -10 Degrees freezer capability
- 14 blast freezer cells
- Rail Served
- Adjacent land for expansion needs

Copyright © 2025 Colliers International. Information herein has been obtained from sources deemed reliable, however its accuracy cannot be guaranteed. The user is required to conduct their own due diligence and verification.

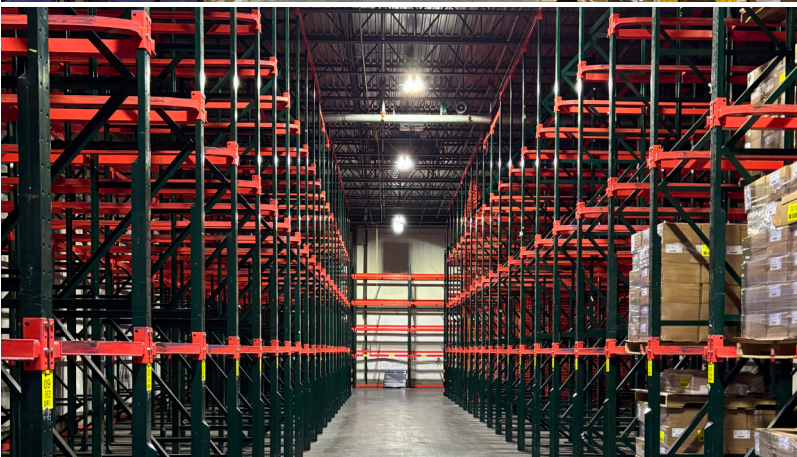
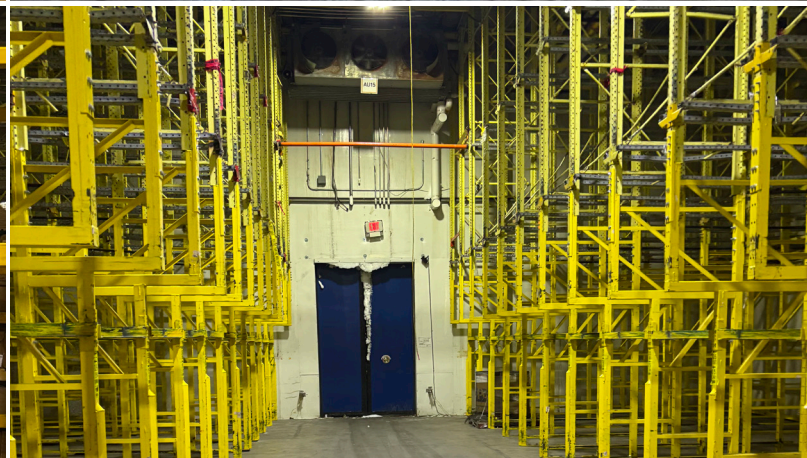
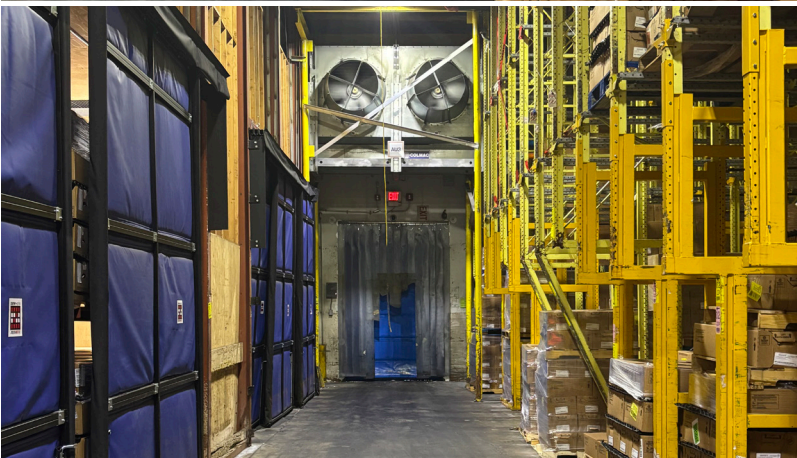
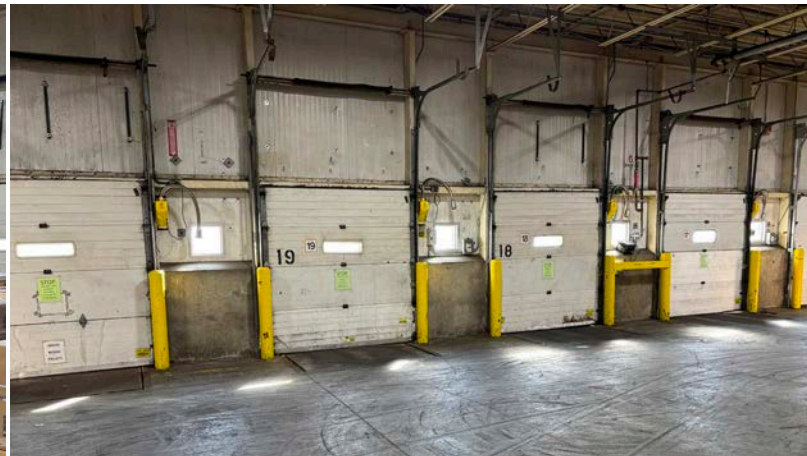
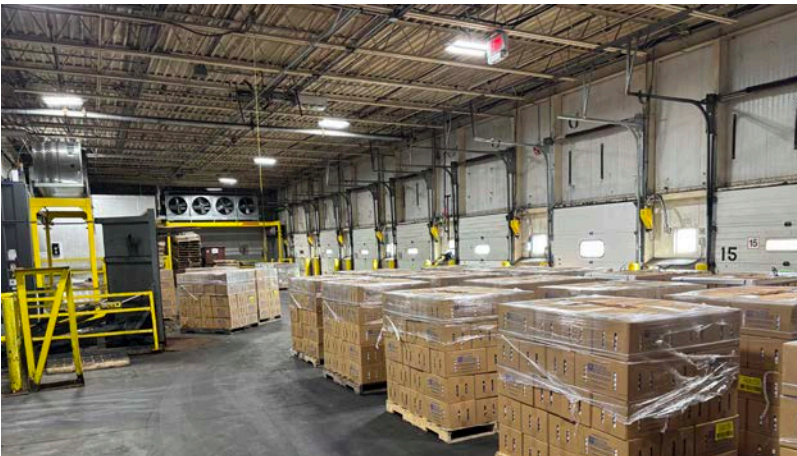
For Lease

Property Highlights

Address:	2300 E Rice St, Sioux Falls, SD 57103
PID:	24724
Building SF:	151,077 SF
Lot Size:	10.34 acres
Year Built:	1972, Renovated in 1998
Loading:	22 Dock Doors 3 Rail Dock Doors
Clear Height:	23.5' - 25' clear heights in warehouse
Construction:	Steel & Masonry
Parking:	60 Surface Spaces
Lighting:	Office: Fluorescent & Incandescent Warehouse: Sodium Vapor
Sprinkler:	Fully Sprinkled <ul style="list-style-type: none">Freezer/Cooler: Dry SystemsNon-Refrigerated Areas: Wet System
Column Spacing:	20' x 40'
Power:	3,000 amps, 480/277-volt
Rail:	Ellis & Eastern shortline (interchanges with BNSF)
2024 Taxes:	\$98,364
Lease Rate:	\$10.50/SF NNN

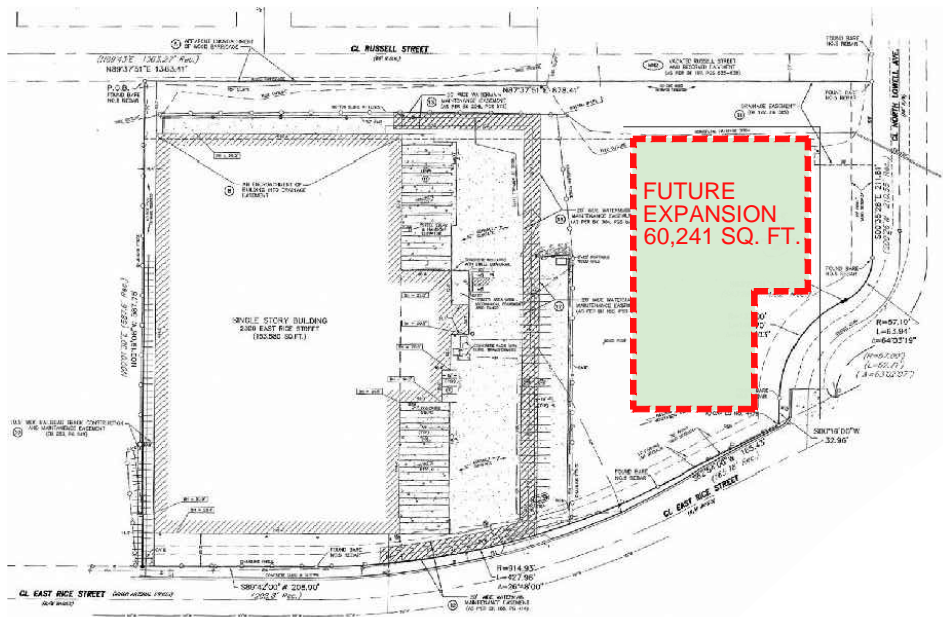


Property Photos

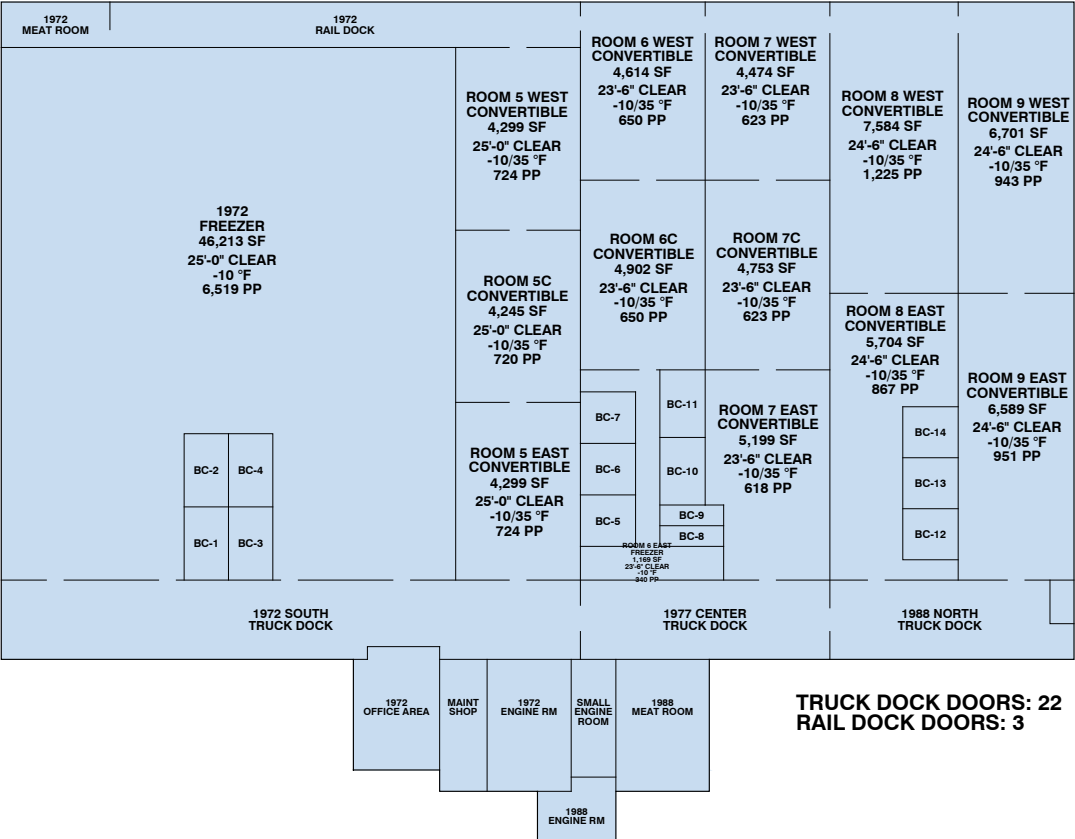


Property Plans

Site Survey

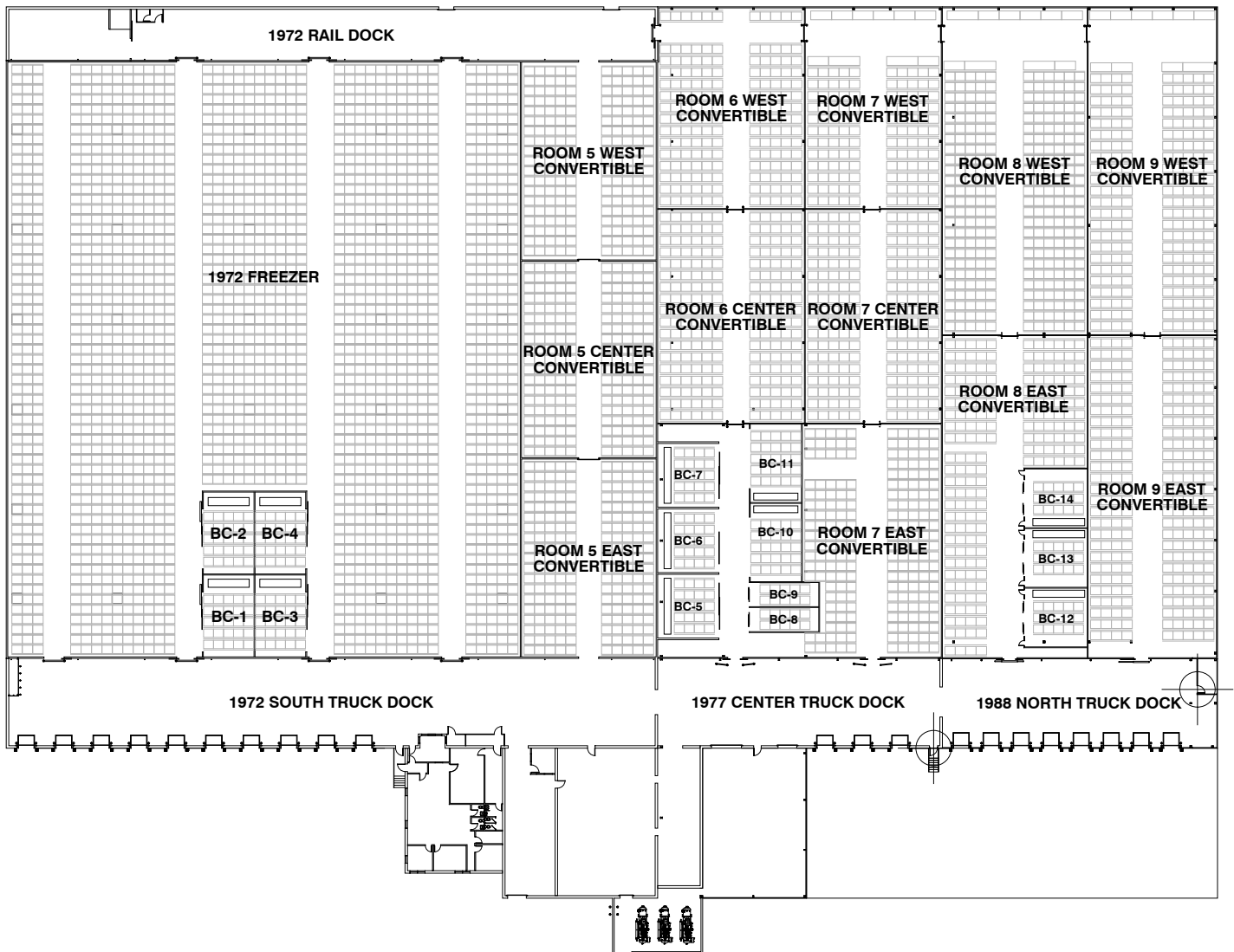


Floor Plan



Property Plans

Floor Plan with Racking



Location Overview

Minnehaha County



Population

214,449 - Cnty (2025)
215,664 - Sioux Falls (2025)



Workforce

66% of population
between ages 19-75



Median
Household
Income

\$78,102 (2025)



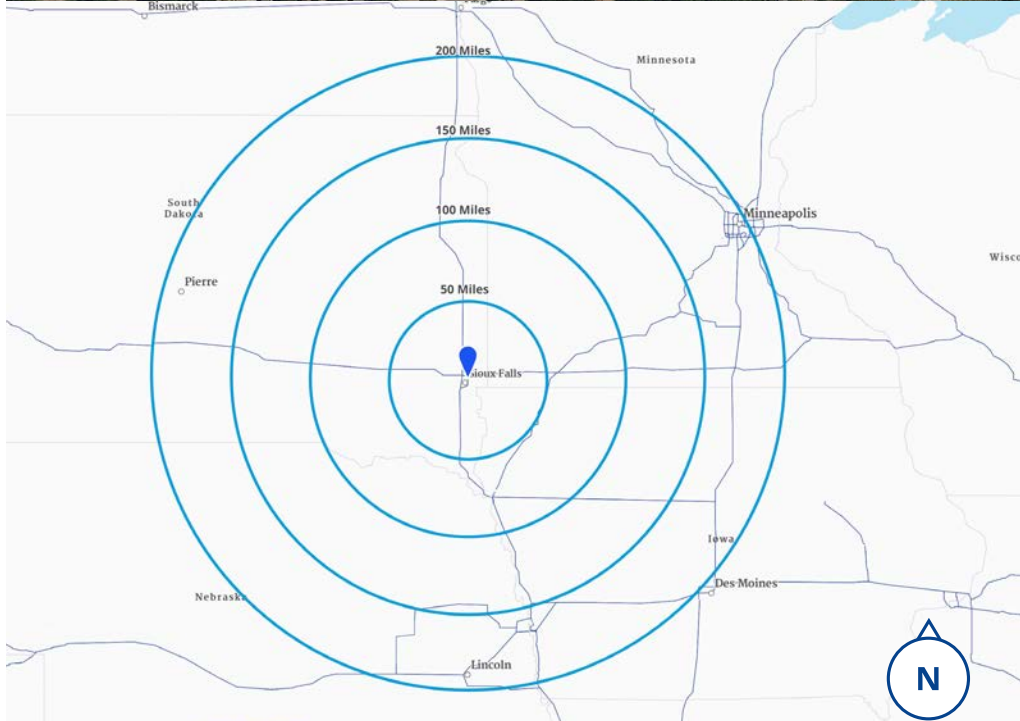
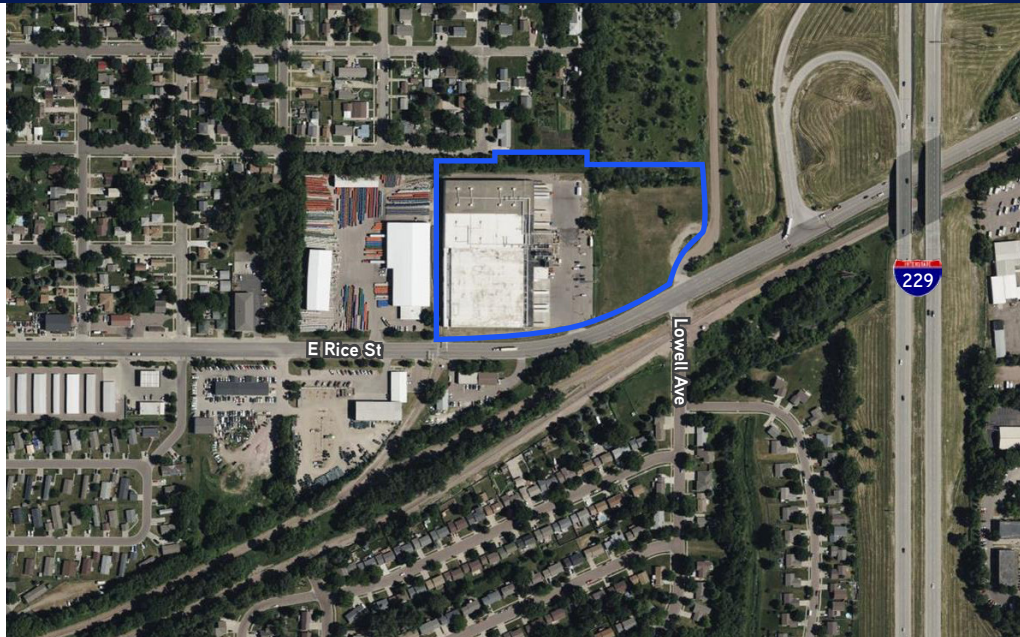
Businesses

9,026 (2025)

Web Links

[Minnehaha County](#)

[Sioux Falls, SD](#)



Colliers

1600 Utica Avenue S, Suite 300
Minneapolis, MN 55416
P: +1 952 897 7700

This document/email has been prepared by Colliers for advertising and general information only. Colliers makes no guarantees, representations or warranties of any kind, expressed or implied, regarding the information including, but not limited to, warranties of content, accuracy and reliability. Any interested party should undertake their own inquiries as to the accuracy of the information. Colliers excludes unequivocally all inferred or implied terms, conditions and warranties arising out of this document and excludes all liability for loss and damages arising there from. This publication is the copyrighted property of Colliers and /or its licensor(s). © 2025. All rights reserved. This communication is not intended to cause or induce breach of an existing listing agreement. Colliers International MN, LLC