



Corporate Campus in Westshore's Eisenhower Corridor

- Sunforest Corporate Campus offers a lush oak-canopied environment and includes on-site day care, outdoor seating areas and multi-family residential options
- Suites from 1,562 - 24,510 RSF available
- 5.00/1,000 parking
- Building and monument signage opportunities
- Convenient access and visibility from both Veterans Expressway and Hillsborough Avenue
- Ease of commute from growing residential neighborhoods in Pasco County
- Minutes from Tampa International Airport
- Long-term, stable Ownership
- **NEW tenant lounge now open at Sunforest I - game tables, casual seating, vending options, complimentary coffee bar**



Get more information

Clay Witherspoon

Managing Director | Principal
+1 813 444 0626

clay.witherspoon@avisonyoung.com

Laurie Hynes

Sr. Client Services Coordinator
+1 813 444 0621

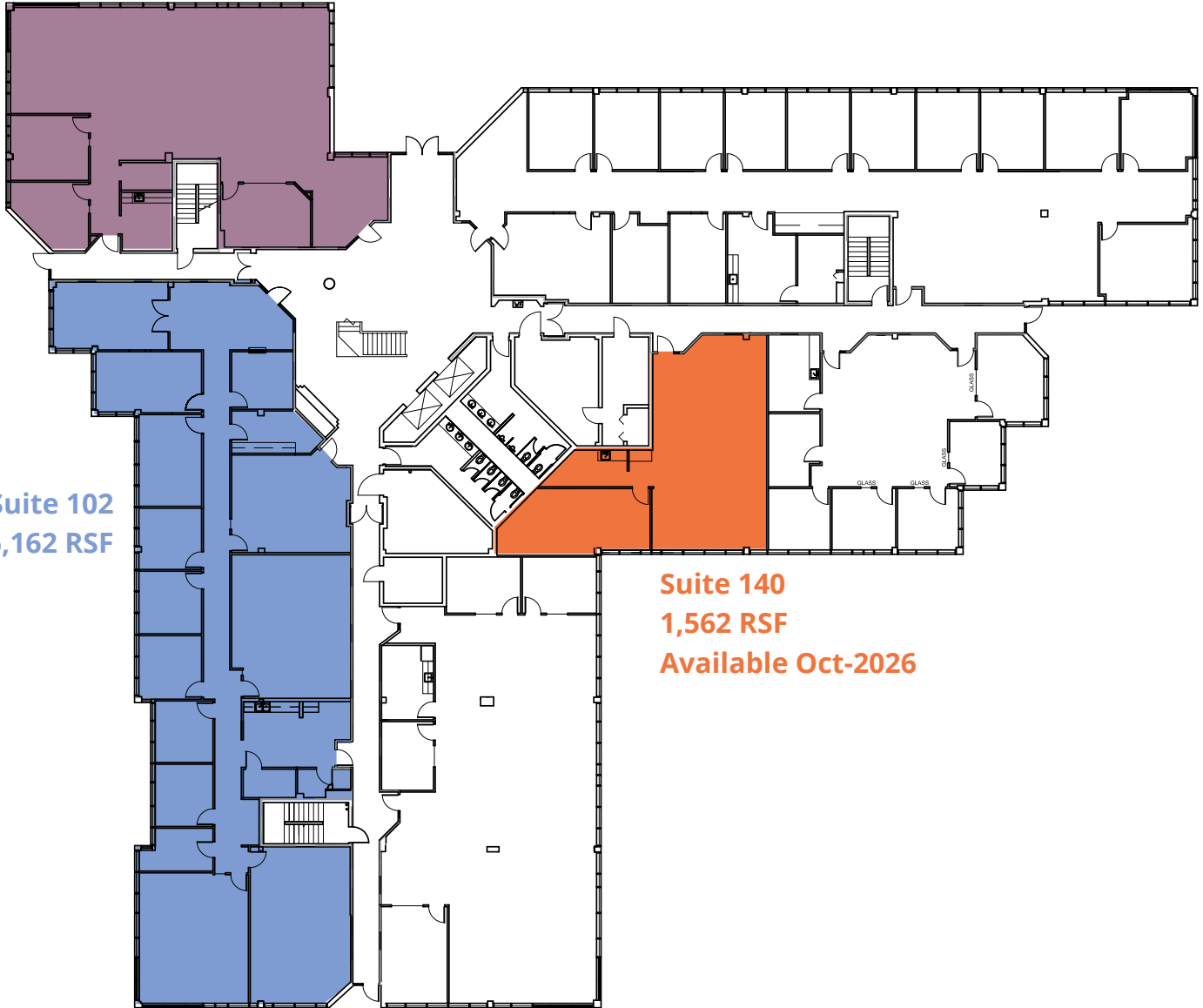
laurie.hynes@avisonyoung.com

avisonyoung.com

1st Floor

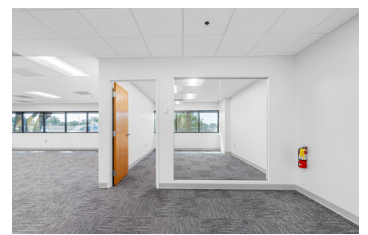
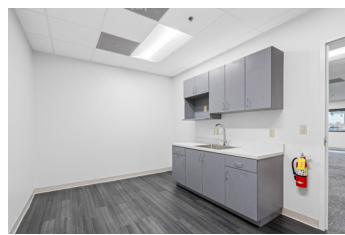
Sunforest II
5110 Sunforest Drive
Tampa, FL 33634

Suite 120
3,177 RSF
Available Dec-2026



Suite 102
6,162 RSF

Suite 140
1,562 RSF
Available Oct-2026



**Get more
information**

Clay Witherspoon
Managing Director | Principal
+1 813 444 0626

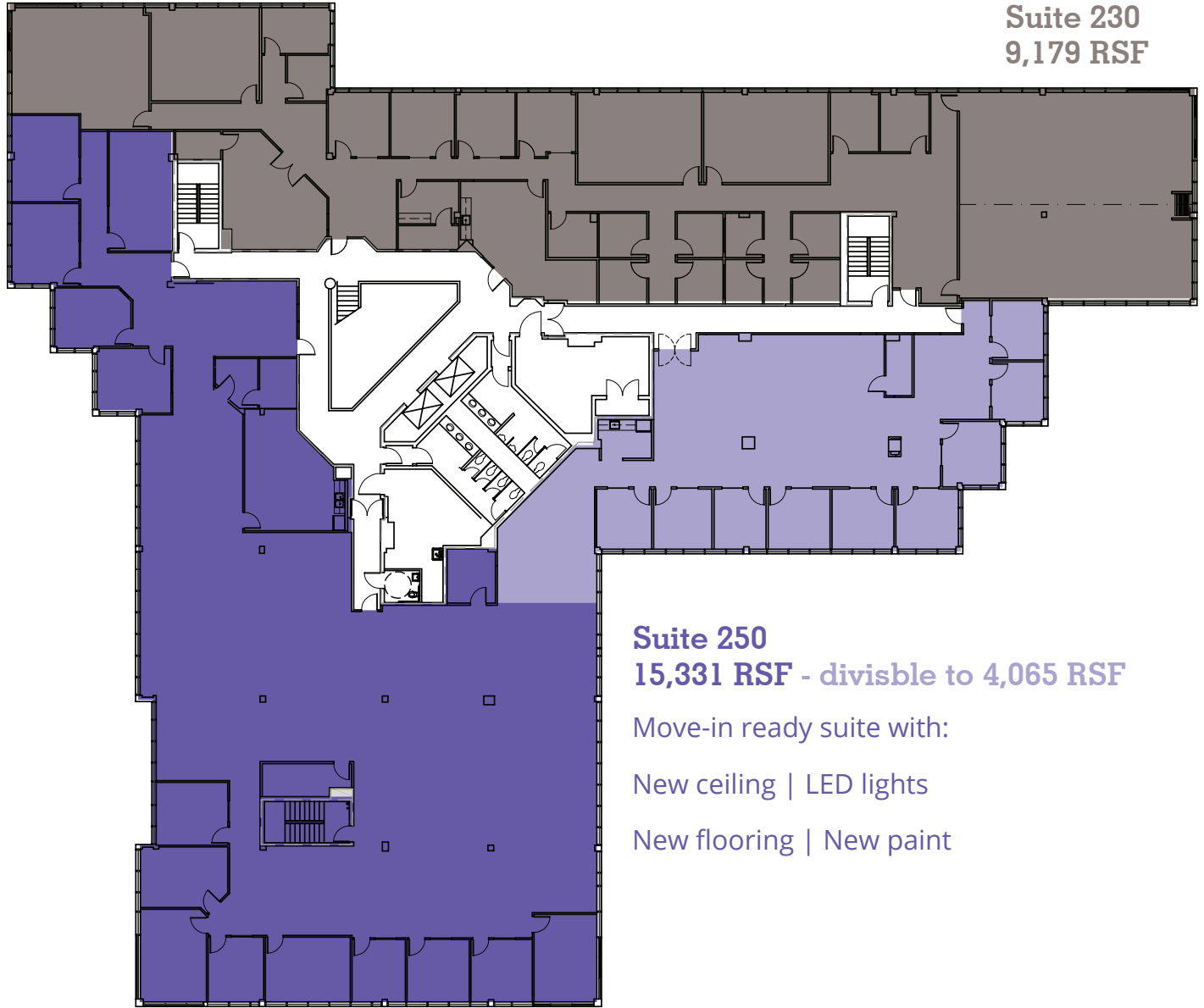
Laurie Hynes
Sr. Client Services Coordinator
+1 813 444 0621

**AVISON
YOUNG**

2nd Floor Full Floor - 24,510 sf

will demise

Sunforest II
5110 Sunforest Drive
Tampa, FL 33634



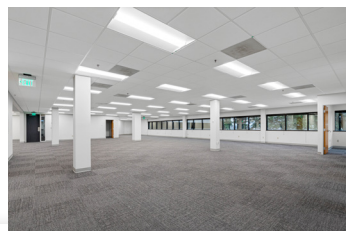
Suite 230
9,179 RSF

Suite 250
15,331 RSF - divisible to 4,065 RSF

Move-in ready suite with:

New ceiling | LED lights

New flooring | New paint



Get more
information

Clay Witherspoon
Managing Director | Principal
+1 813 444 0626

Laurie Hynes
Sr. Client Services Coordinator
+1 813 444 0621

**AVISON
YOUNG**

Location Map

Sunforest II
5110 Sunforest Drive
Tampa, FL 33634



Get more information

Clay Witherspoon
Managing Director | Principal
+1 813 444 0626

Laurie Hynes
Sr. Client Services Coordinator
+1 813 444 0621

AVISON YOUNG