

1329

N 29TH AVENUE
SUITE C7

PHOENIX, AZ

FOR SUBLEASE
±4,000 SF



CBRE

PROPERTY HIGHLIGHTS

FOR SUBLEASE UNTIL 1/31/27



±4,000 SF
FREESTANDING
OFFICE/WAREHOUSE



±750 SF
OFFICE SPACE



14' CLEAR HEIGHT



EVAP COOLED
WAREHOUSE



1 - COMMON TRUCKWELL
1 - 12' X 14' GRADE
DOORS



200 AMPS
120/280V



SECURED GATE
INGRESS/EGRESS



A-1 ZONING
CITY OF PHOENIX



NEW FLOORING
& PAINT COMING
SOON



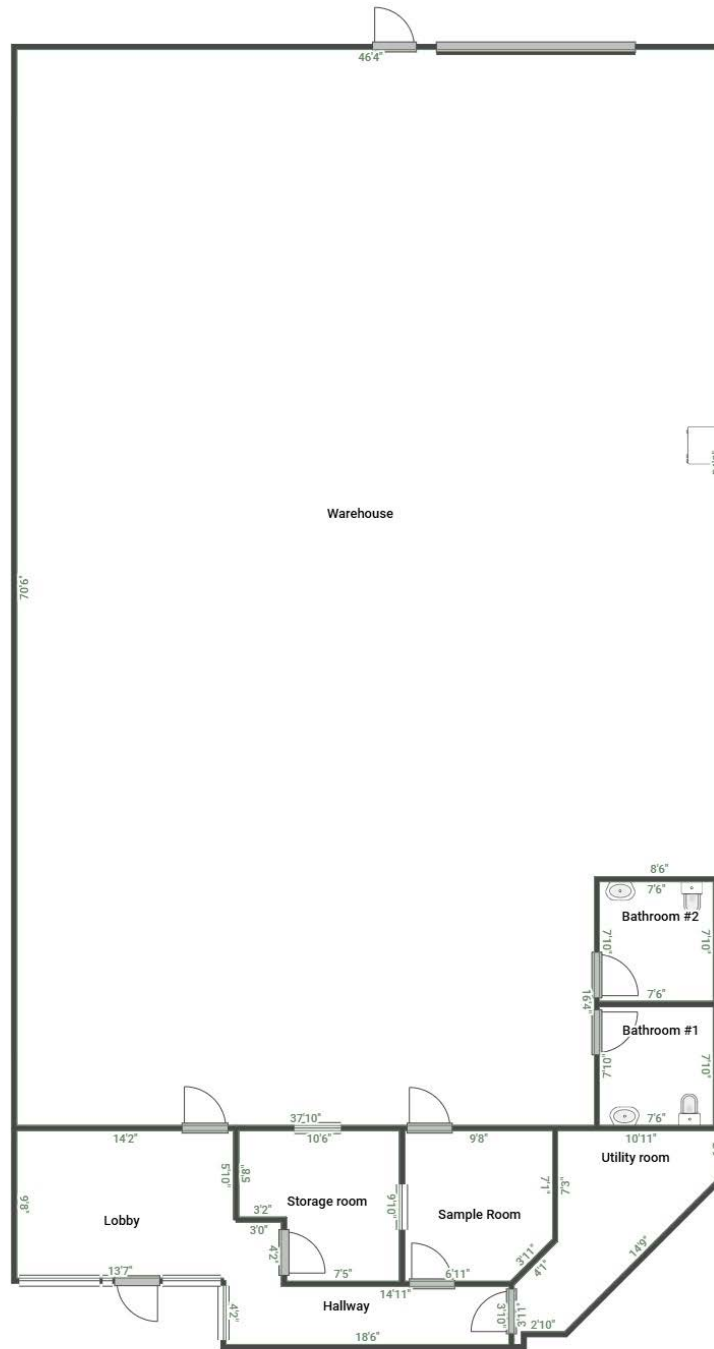
BUILT IN 2003



SITE PLAN

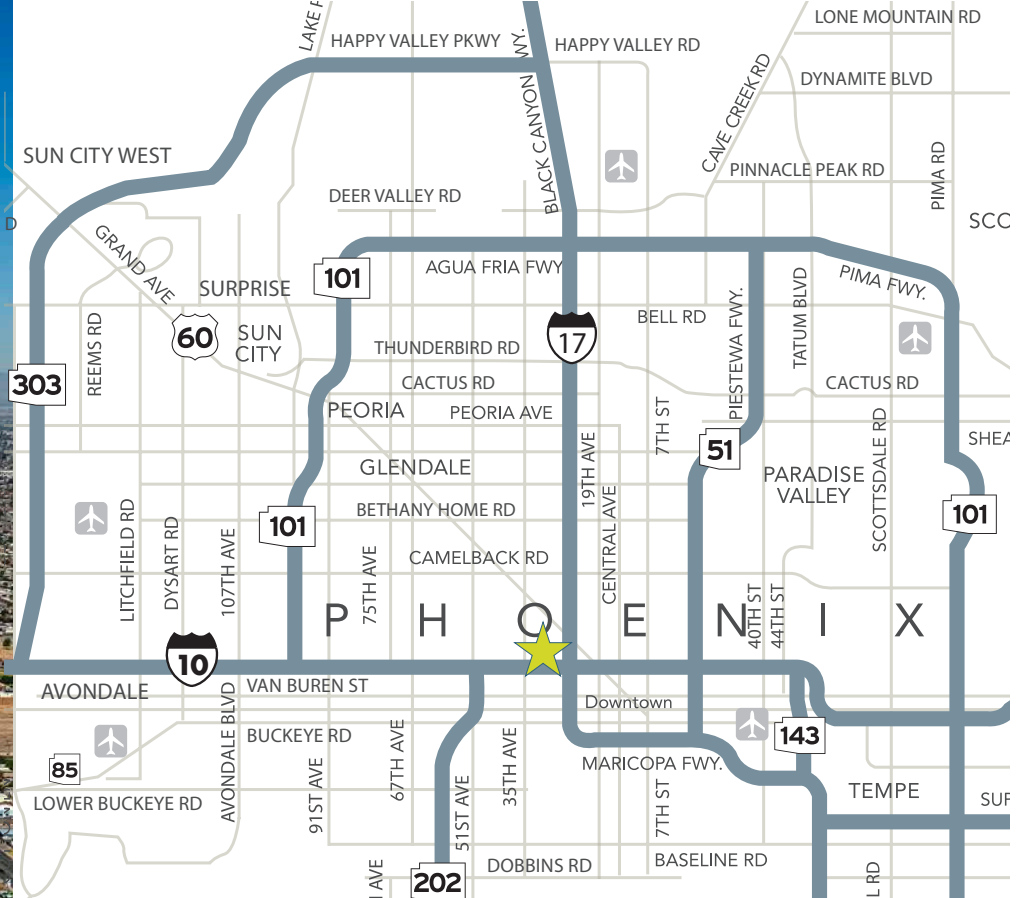


FLOOR PLAN



[3-D TOUR](#)





1329

N 29TH AVE
SUITE C7

PHOENIX, AZ



CONTACTS

SERENA WEDLICH, SIOR

Senior Vice President
+1 602 735 5633
serena.wedlich@cbre.com

© 2025 CBRE, Inc. All rights reserved. This information has been obtained from sources believed reliable but has not been verified for accuracy or completeness. CBRE, Inc. makes no guarantee, representation or warranty and accepts no responsibility or liability as to the accuracy, completeness, or reliability of the information contained herein. You should conduct a careful, independent investigation of the property and verify all information. Any reliance on this information is solely at your own risk. CBRE and the CBRE logo are service marks of CBRE, Inc. All other marks displayed on this document are the property of their respective owners, and the use of such marks does not imply any affiliation with or endorsement of CBRE. Photos herein are the property of their respective owners. Use of these images without the express written consent of the owner is prohibited.

CBRE