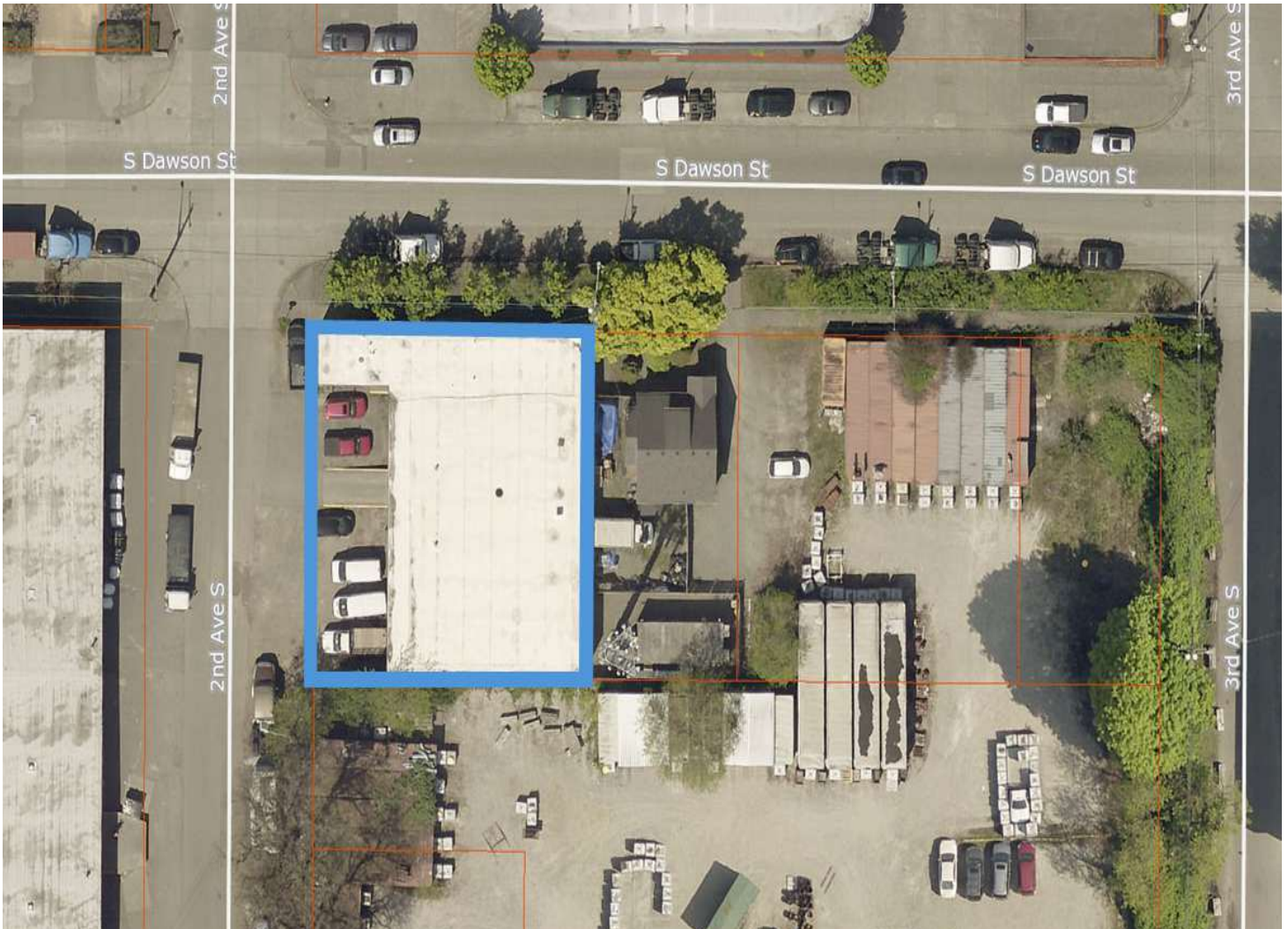


LEASE

GEORGETOWN WAREHOUSE FOR LEASE

205 S Dawson St Seattle, WA 98108



Lease Rate

**\$18.00 SF/YR
(NNN)**

OFFERING SUMMARY

Building Size: 8,400 SF Approx.
(Warehouse/Office) (6,425 SF/1,975 SF)

Lot Size: 0.22 Acres

Zoning: MML-U/85

PROPERTY OVERVIEW

Located in the heart of Georgetown, this approx. 8,400 SF industrial space offers excellent functionality for a wide range of users. The building features ****15-foot clear ceilings****, ****two dock-high doors****, and ****one drive-in door****, making it ideal for distribution, light manufacturing, or creative production.

Onsite and street parking is available, and the property is easily accessible from I-5, SR-99, and downtown Seattle. A solid option for businesses looking to establish or expand in one of Seattle's most dynamic industrial neighborhoods.

Bob Fredrickson, CCIM
(206) 595-7232
bfredrickson@cbcworldwide.com

Josh Strok
(425) 949-6897
joshdstrok@gmail.com

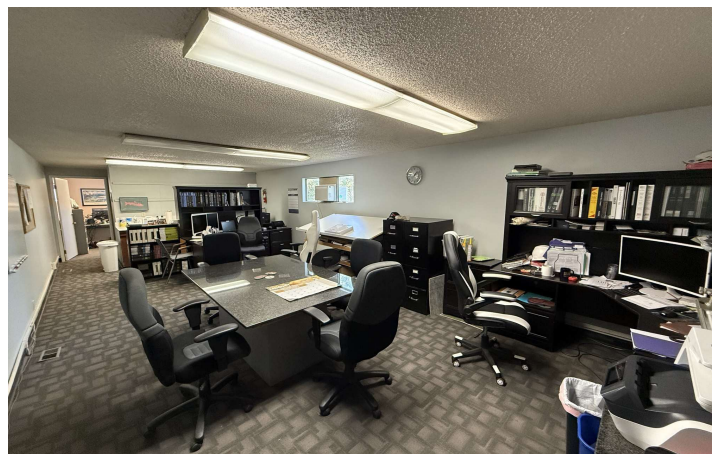
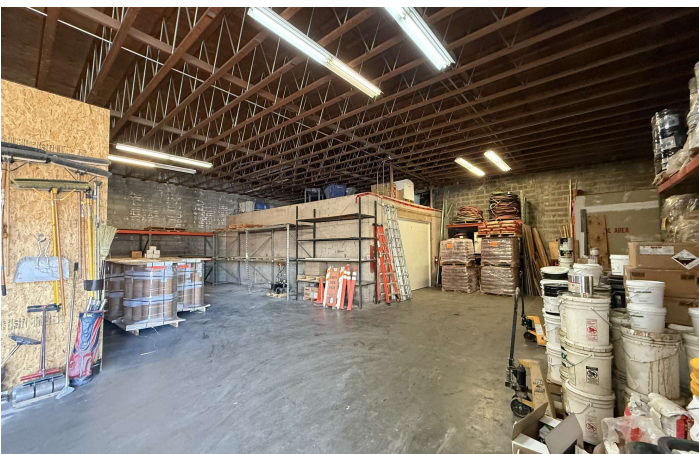
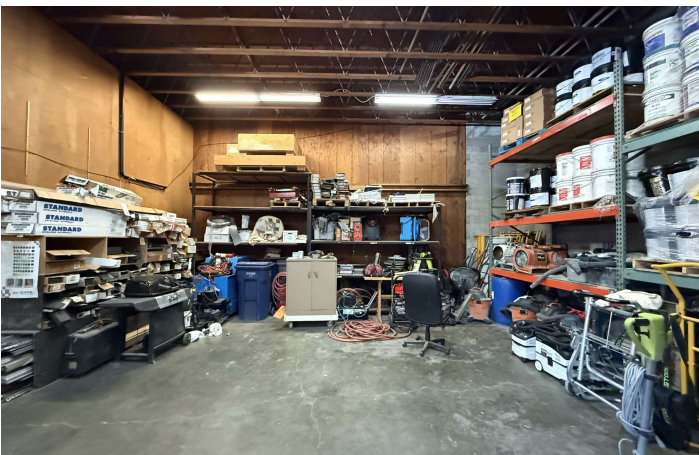
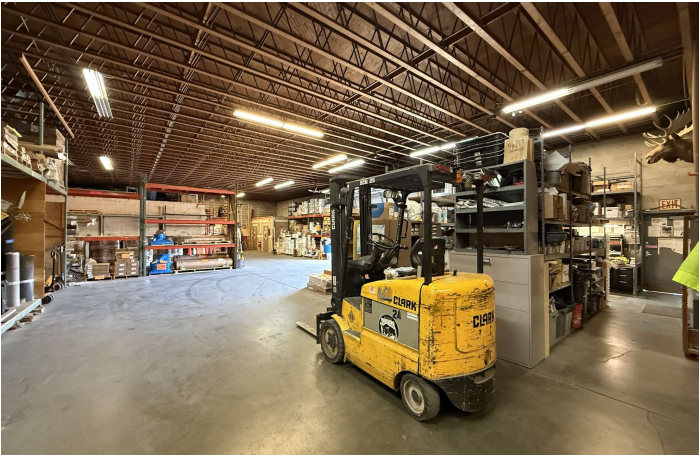


**COLDWELL BANKER
COMMERCIAL**
DANFORTH

LEASE

GEORGETOWN WAREHOUSE FOR LEASE

205 S Dawson St Seattle, WA 98108



Bob Fredrickson, CCIM
(206) 595-7232
bfredrickson@cbcworldwide.com

Josh Strok
(425) 949-6897
joshdstrok@gmail.com

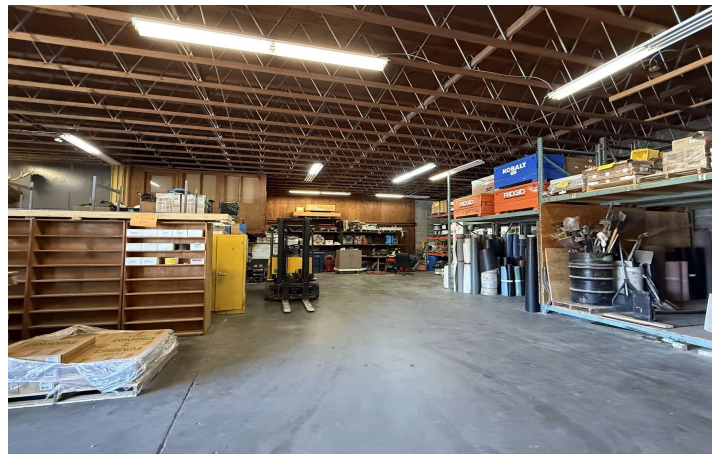
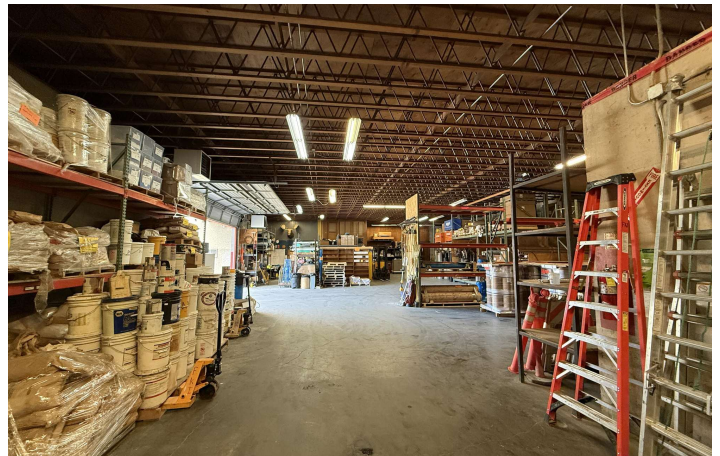


**COLDWELL BANKER
COMMERCIAL**
DANFORTH

LEASE

GEORGETOWN WAREHOUSE FOR LEASE

205 S Dawson St Seattle, WA 98108



Bob Fredrickson, CCIM
(206) 595-7232
bfredrickson@cbcworldwide.com

Josh Strok
(425) 949-6897
joshdstrok@gmail.com

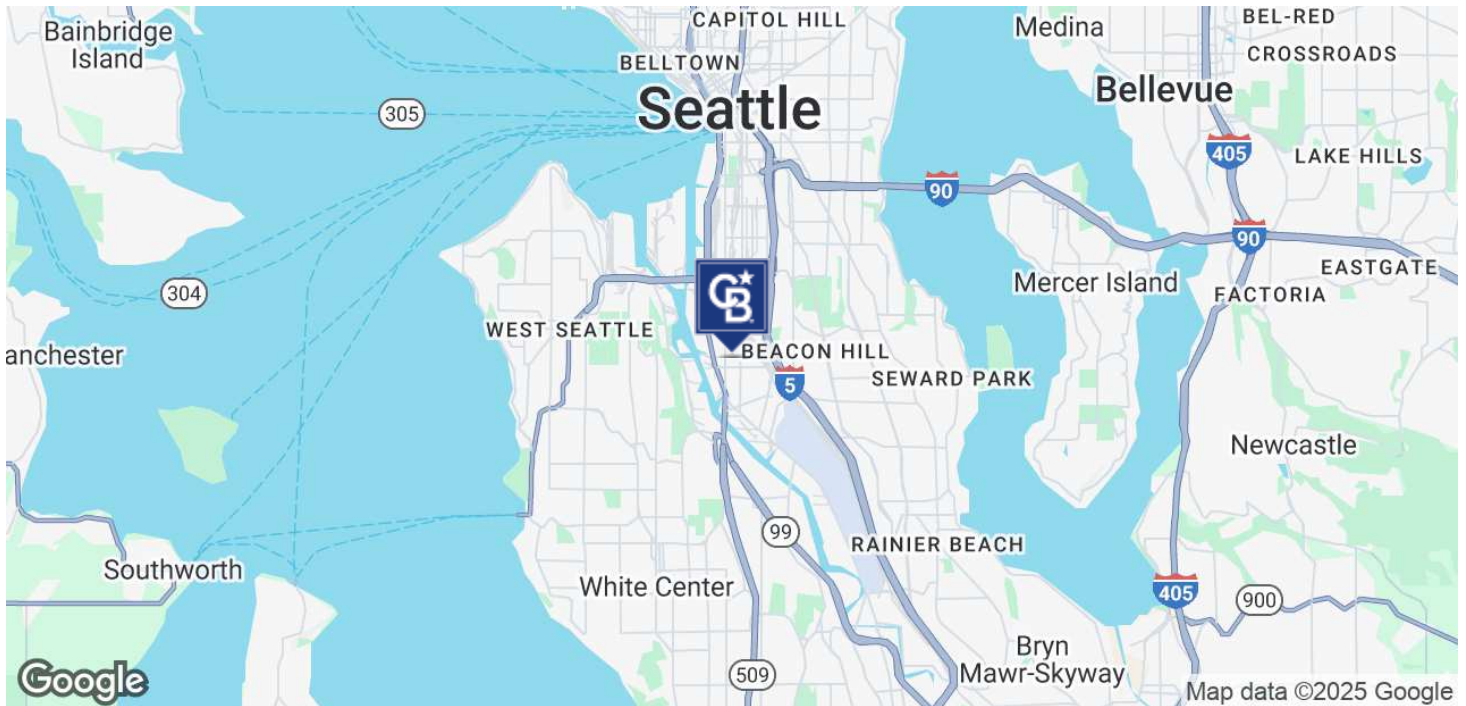


**COLDWELL BANKER
COMMERCIAL**
DANFORTH

LEASE

GEORGETOWN WAREHOUSE FOR LEASE

205 S Dawson St Seattle, WA 98108



Bob Fredrickson, CCIM
(206) 595-7232
bfredrickson@cbcworldwide.com

Josh Strok
(425) 949-6897
joshdstrok@gmail.com



**COLDWELL BANKER
COMMERCIAL**
DANFORTH