

- Legend**
- ⊕ 2 1/2" Diameter Cast in Concrete to Iron Pipe Monument Set During Survey of Beaver Subdivision
 - ⊕ 3 1/2" Diameter of Plastic One Inch-100 "1.5 55" Property Cap or Witness to Property Cap
 - ⊕ 3 1/2" Diameter of 1 1/2" Dia Aluminum Cap "1 1/2 55" Set This Society
 - Typical Property Line Curve Designation — See CURVE DATA TABLE
 - Typical Roadway Centerline Curve Designation — See CURVE DATA TABLE
 - Typical Section Line
 - Typical Public Utility Easement Line
 - Typical Section Line Roadway Easement Line
 - 144747 Lot Area in Square Feet

CERTIFICATE OF REGISTERED LAND SURVEYOR

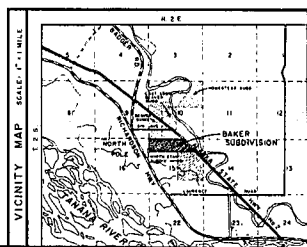
I, FLOYD A. OLSEN, A PROFESSIONAL LAND SURVEYOR, DO HEREBY REGISTERED UNDER THE LAWS OF THE STATE OF ALASKA, DO HEREBY CERTIFY THAT THIS PLAN REPRESENTS THE SURVEY MADE UNDER MY DIRECT SUPERVISION, THAT THIS PLAN IS A TRUE AND CORRECT REPRESENTATION OF THE LANDS SURVEYED AND THAT COMPLIANCE HAS BEEN MADE WITH ALL OF THE APPLICABLE REQUIREMENTS OF THE FAIRBANKS NORTH STAR SUBDIVISION REGULATION SECTION 17.16.030 MONUMENTS.

Floyd A. Olsen
 REGISTERED NO. 51675



79-229
 RECORDED - FILED 6-11-79
 F.S.S. - REC. DEPT.
 0111 - 13 - 10 27
 FILED 11:05 A.M.
 INDEXED BY
 F.N.S.B.

SHEET 1 OF 2
 GRAPHIC SCALE 1" = 100' X 1.1
 0 100 200 300 400 500

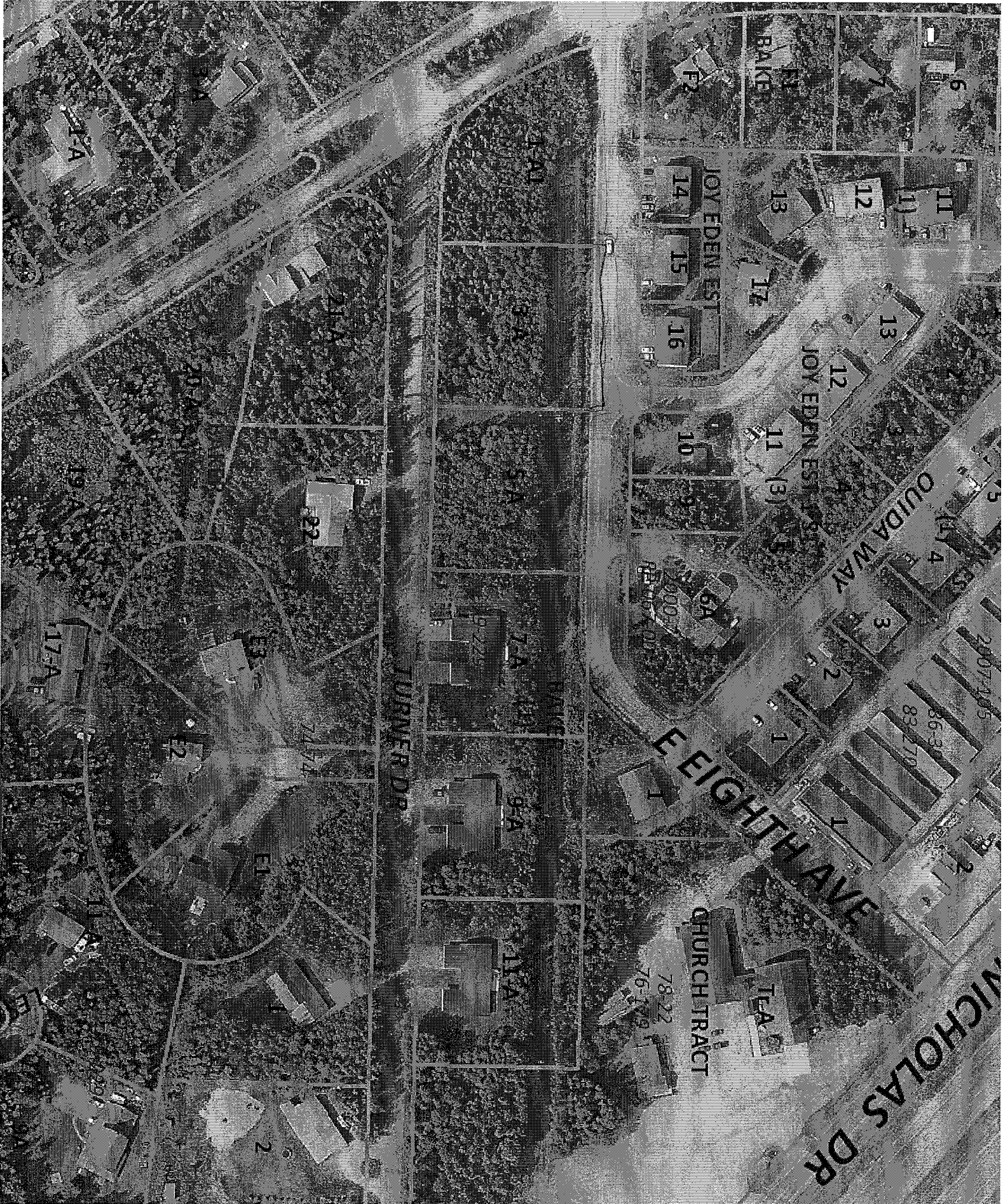


REPLAT OF LOTS 1-12 OF BLOCK 1, LOTS 3-21 OF BLOCK 2, LOTS 5 & 6, 13-16, 19 & 21 OF BLOCK 3, LOTS 1-22 OF BLOCK 4, LOTS 1-14 OF BLOCK 5, LOTS 1-18 OF BLOCK 6, BAKER SUBDIVISION

LOCATED WITHIN THE N1/2 SECTION 15, T.2S., R.2E., FM.

Owned By: _____ Subdivided By: _____
 (SEE SHEET TWO) THE OWNERS

Prepared By: _____
ELLERBE ALASKA
 FAIRBANKS, ALASKA



MILYN