



FRESHLY PAINTED BUILDING

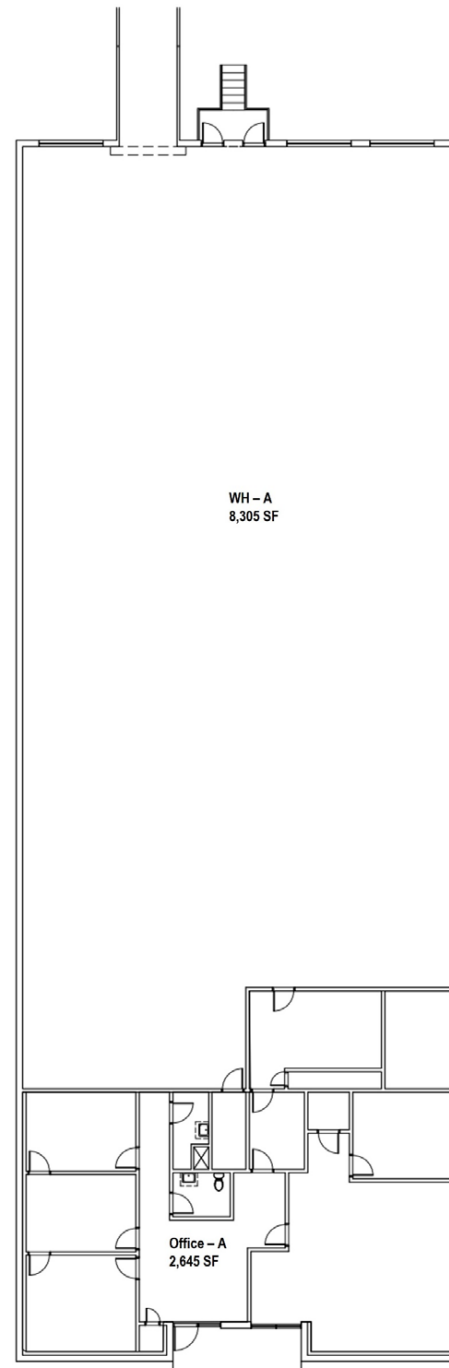
4303 PLEASANTDALE ROAD
WAREHOUSE/OFFICE SPACE AVAILABLE

NEWMARK

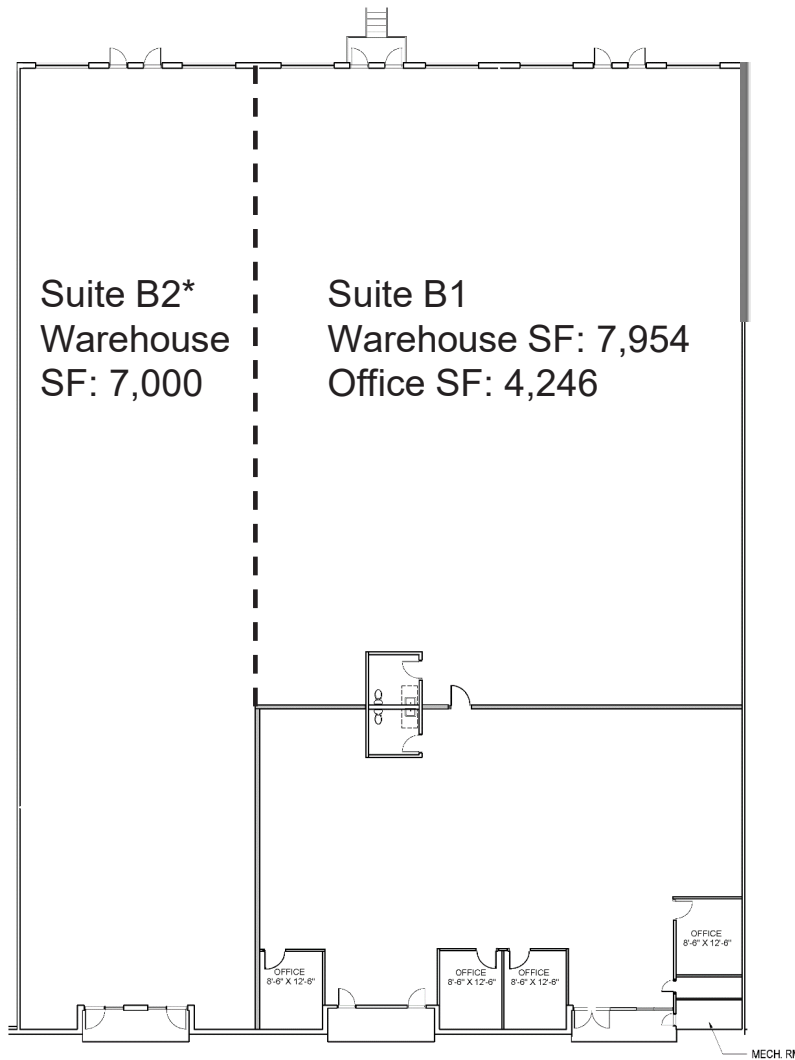
Suite A | 10,950 SF

Warehouse 8,305 SF

Office 2,645 SF



Suites B1 & B2 | 7,000 - 19,200 SF

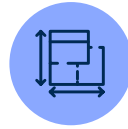


6 Total Dock High Doors

*Landlord to build out restroom, breakroom, and private office



PROPERTY HIGHLIGHTS



Available Space

Suite A | 10,950 SF

Suite B1 & B2 | 7,000 - 19,200 SF



Building is Newly Painted



Brand New Spec Suite

Delivered September 1, 2024



7 Dock High Doors



4303 Pleasantdale Road
Doraville, Georgia 30340

For leasing inquiries please contact:

RJ Zurak

Senior Managing Director
t 770-552-2420
rj.zurak@nmrk.com

Stewart Thrash

Senior Managing Director
t 404-926-1074
stewart.thrash@nmrk.com

NEWMARK