

For Lease

115 Cargill Way
Hartsville, SC - 29550

Professional Executive Suites

12-month Leases start @ \$400/mo



Jonathan C. Lee, CCIM

Call/Text: 843.991.4848

JonathanLee@ChoiceRealtyUSA.com



COMMERCIAL | RESIDENTIAL | MANAGEMENT | INVESTMENTS

Office Lease Summary

115 Cargill Way, Hartsville, SC

Property Summary

CHOICE Realty is pleased to present **115 Cargill Way**, offering convenient access and professional office space available in Hartsville. Office has 5 perimeter offices on glass offering plenty of natural light, 2 interior offices and a break room, lobby entrance, private entrance, and new paint throughout.

This property is in close proximity of many area amenities and within walking distance to Fairfield Inn, Hampton Inn, Burry Park, Hartsville YMCA, and plenty of restaurants and shops in downtown Hartsville. This office building is located adjacent to Burry Park, Hartsville's popular "family movie" park and a great spot to relax on the swings during a lunch break.



Executive Suites Highlights

- Private Lockable Suites with shared break room & conference room
- Move-in ready
- Lobby entrance & separate private entrance
- Includes Utilities and common area cleaning services
- Downtown Hartsville, next to Burry Park
- 12-month Leases starting at \$400 per month

Jonathan C. Lee, CCIM

Call/Text: 843.991.4848

JonathanLee@ChoiceRealtyUSA.com

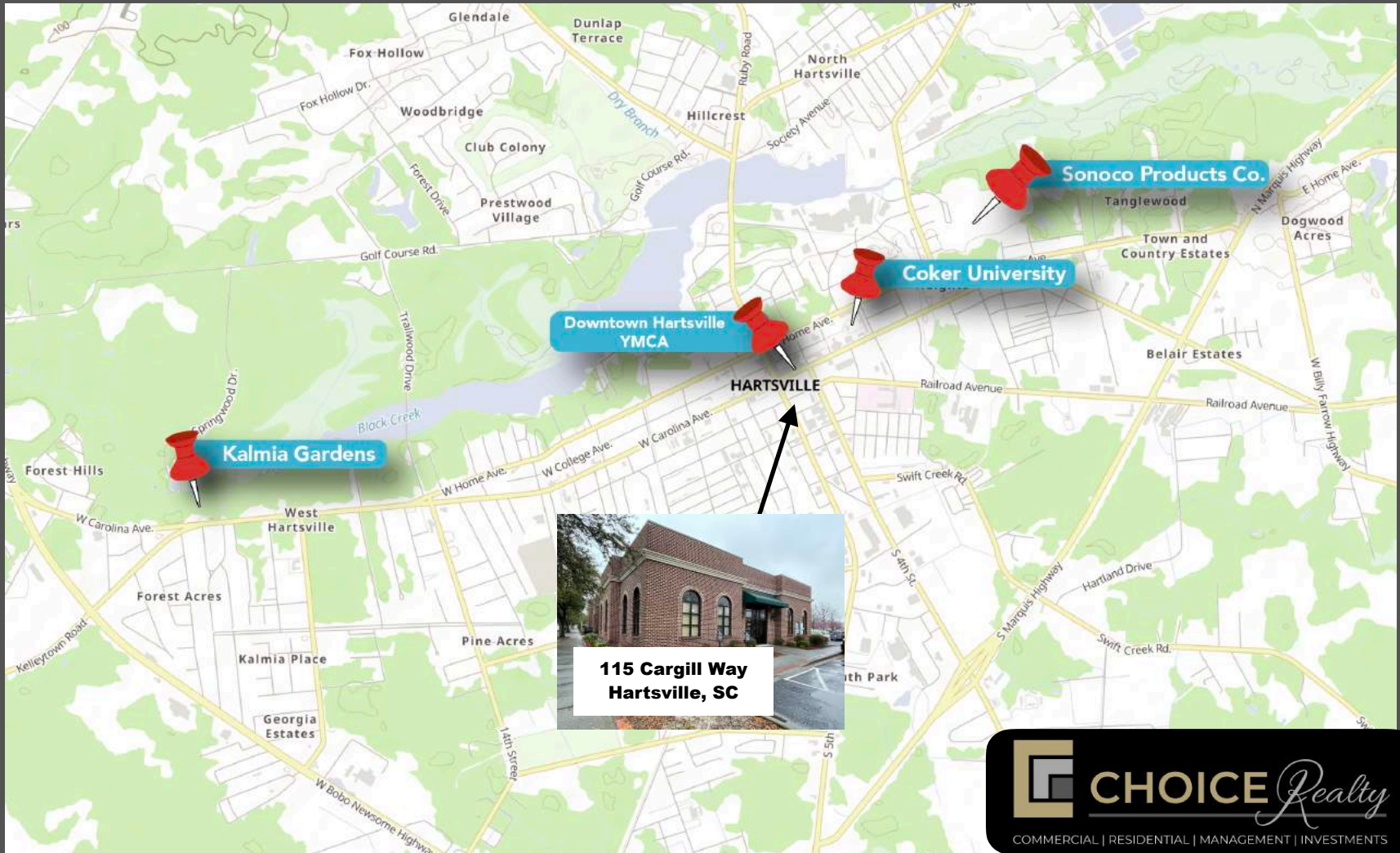


CHOICE *Realty*

COMMERCIAL | RESIDENTIAL | MANAGEMENT | INVESTMENTS

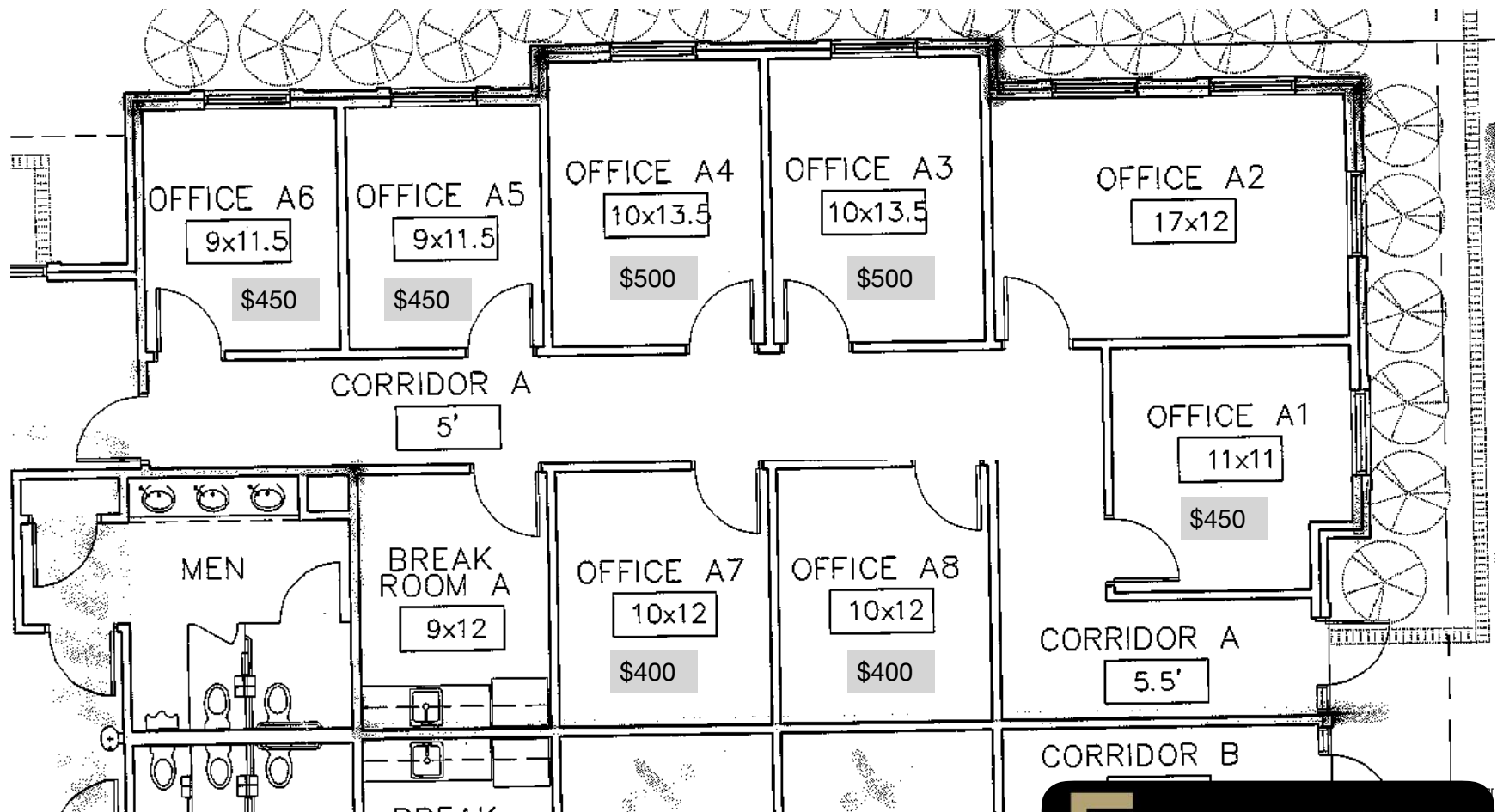
Downtown Location

115 Cargill Way, Hartsville, SC



Floor Plan & Rental Rates

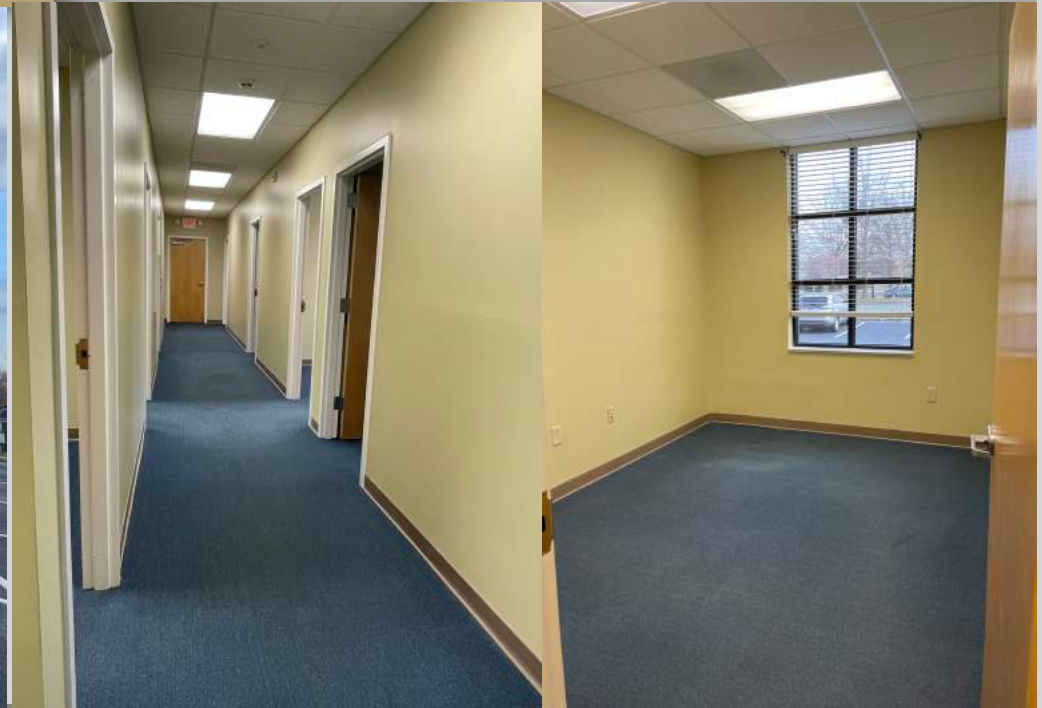
115 Cargill Way, Hartsville, SC



COMMERCIAL | RESIDENTIAL | MANAGEMENT | INVESTMENTS

Additional Photos

115 Cargill Way, Hartsville, SC



Jonathan C. Lee, CCIM
Call/Text: 843.991.4848
JonathanLee@ChoiceRealtyUSA.com



 **CHOICE** *Realty*
COMMERCIAL | RESIDENTIAL | MANAGEMENT | INVESTMENTS