



For sublease

Plymouth Industrial Park D
13200 N 10th Ave, Plymouth, MN

16,446 SF Available

 **JLL** SEE A BRIGHTER WAY

Building specifications

Plymouth Industrial Park - Bldg D

13200 N 10th Ave, Plymouth, MN

Available Through

February 28, 2027

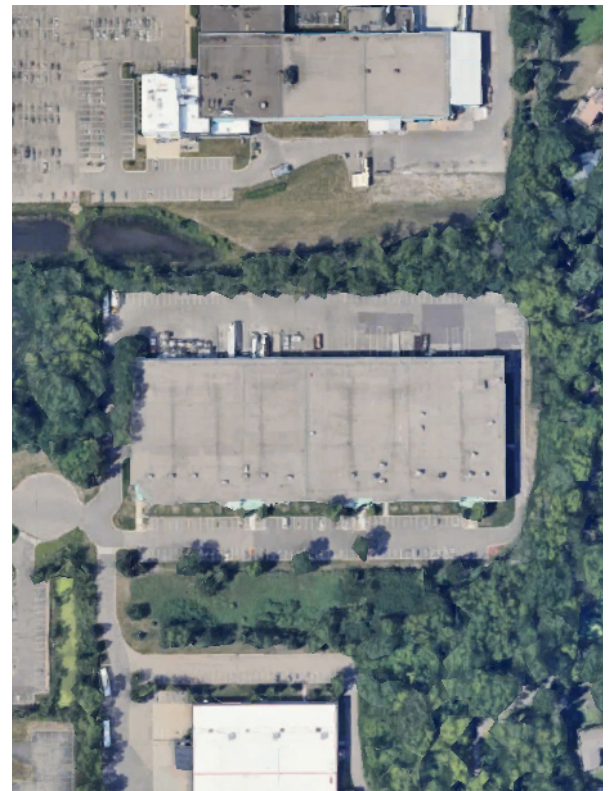
Rare 24'

Clear Height

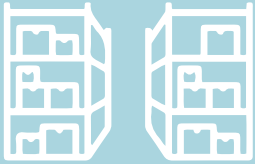
Direct Access

To 494 via Carlson Pkwy

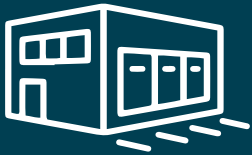
Building Size	112,029 SF
SF Available	3,395 SF Office 13,051 SF Warehouse 16,446 SF Total
Year Built	1989
Clear Height	24'
Loading	Four (4) dock doors with levelers One (1) drive-in
Parking	0.71/1,000 SF
Rental Rate	\$8.50 gross
Available	Now
Available Through	2/28/2027



Floor plan



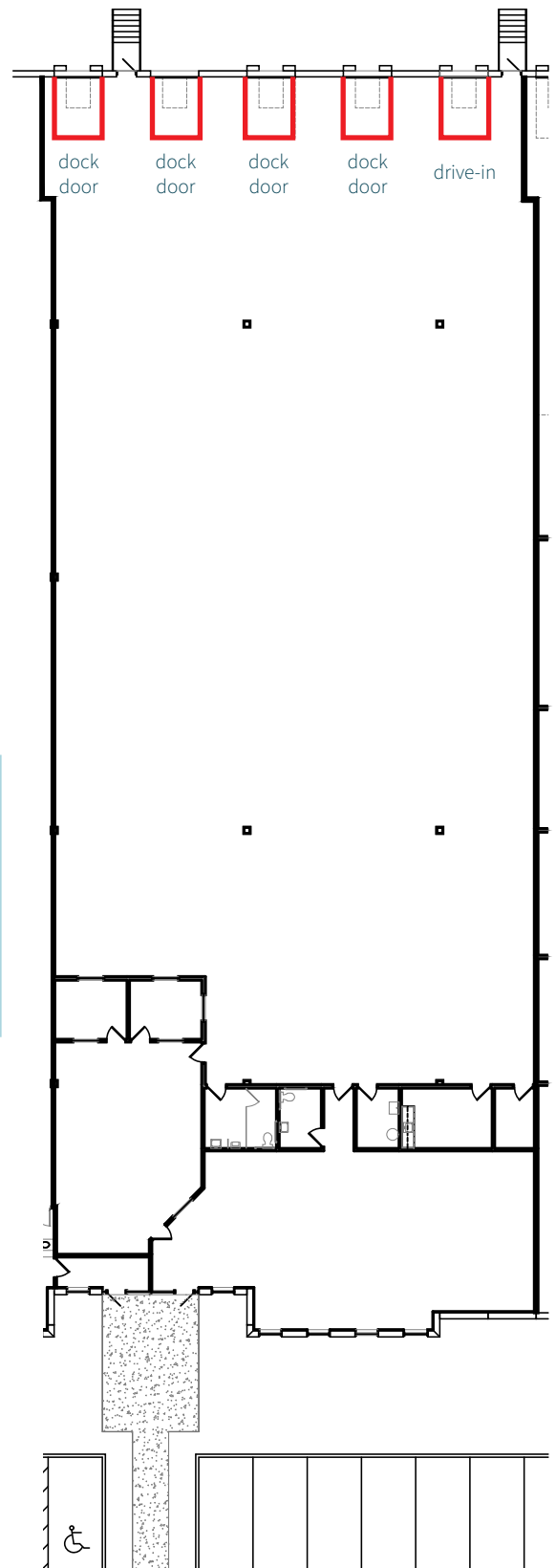
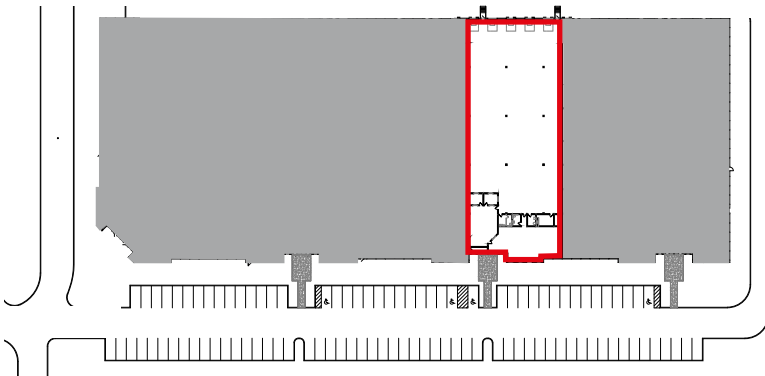
3,395 SF Office
13,051 SF Warehouse
16,446 SF Total



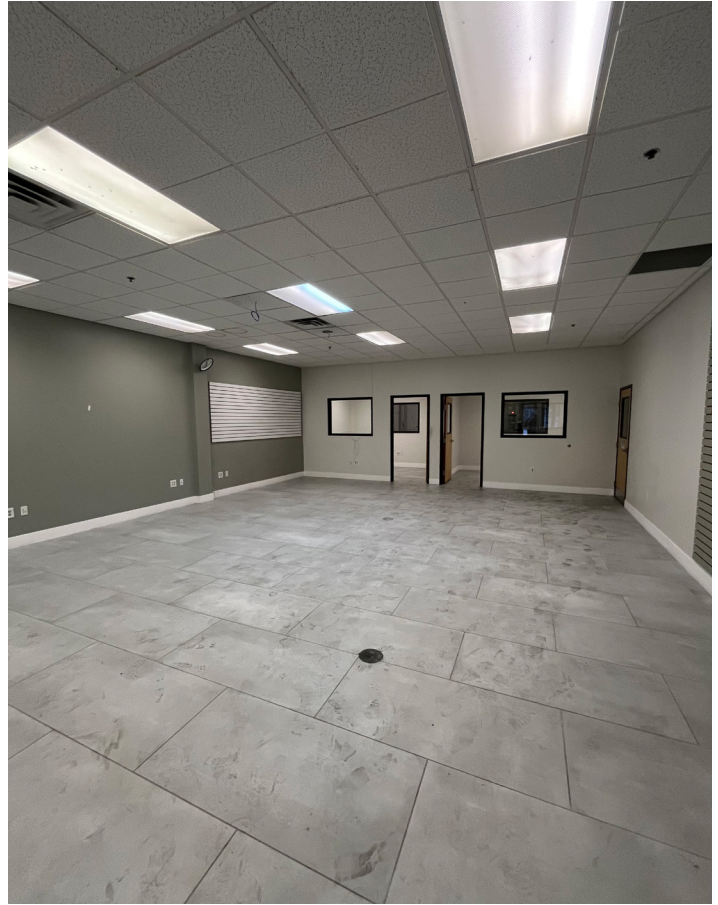
Four (4) dock doors
with levelers



One (1) drive-in

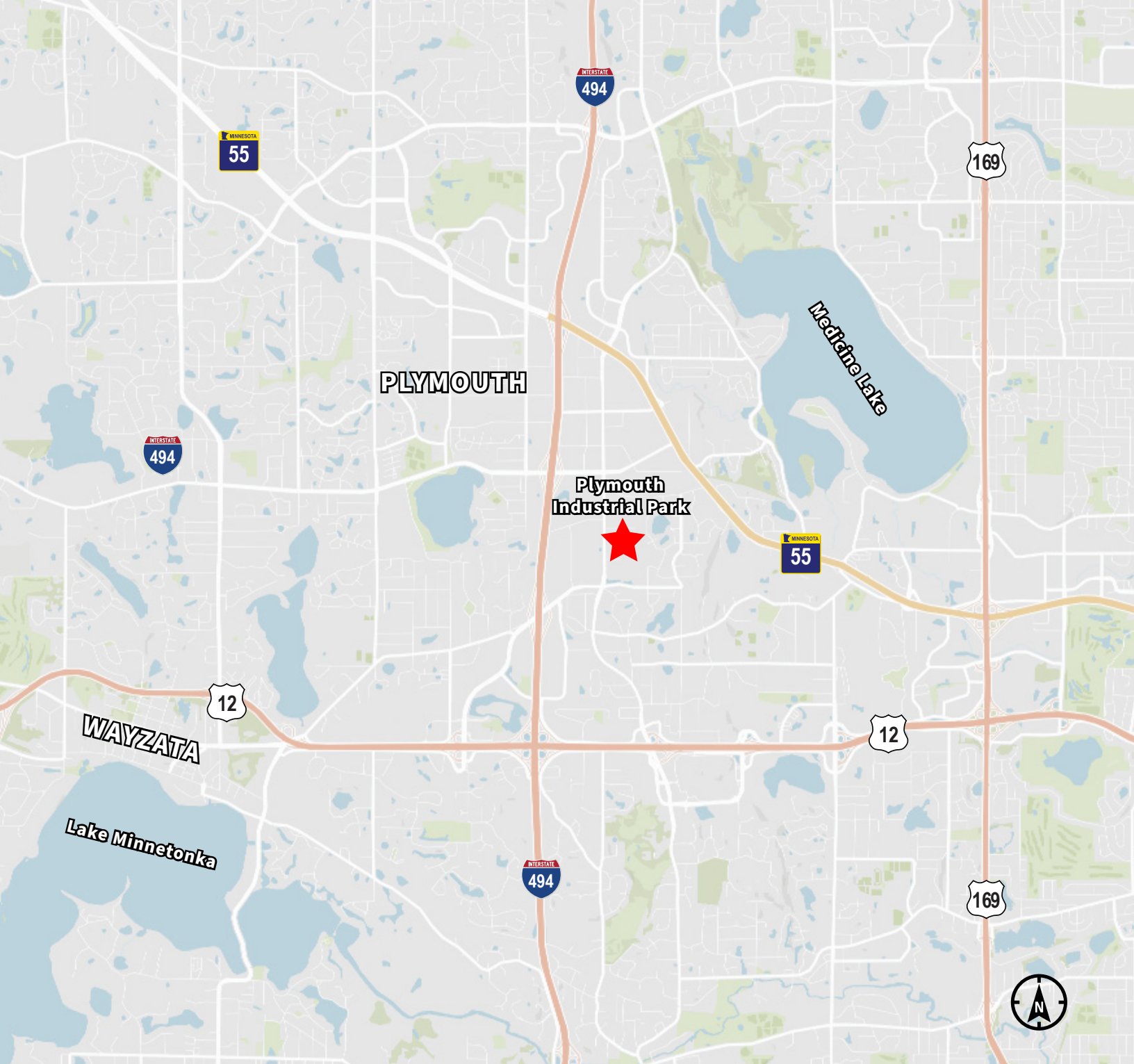


Suite photos - Office



Suite photos - Warehouse





JLL SEE A BRIGHTER WAY

Will McArdle
Senior Associate
+1 203 945 9696
william.mcardle@jll.com

Kyle Rafshol
Vice President
+1 952 270 6792
kyle.rafshol@jll.com

JLL
250 Nicollet Mall
Suite 1000
Minneapolis, MN 55401