

**FOR LEASE**

Owned and Operated by  **LINK**

## REGENCY II INDUSTRIAL PARK

4224 Tudor Lane,  
Greensboro, NC 27410

**+/- 28,000 SF**



### LEASING INFO & CONTACT

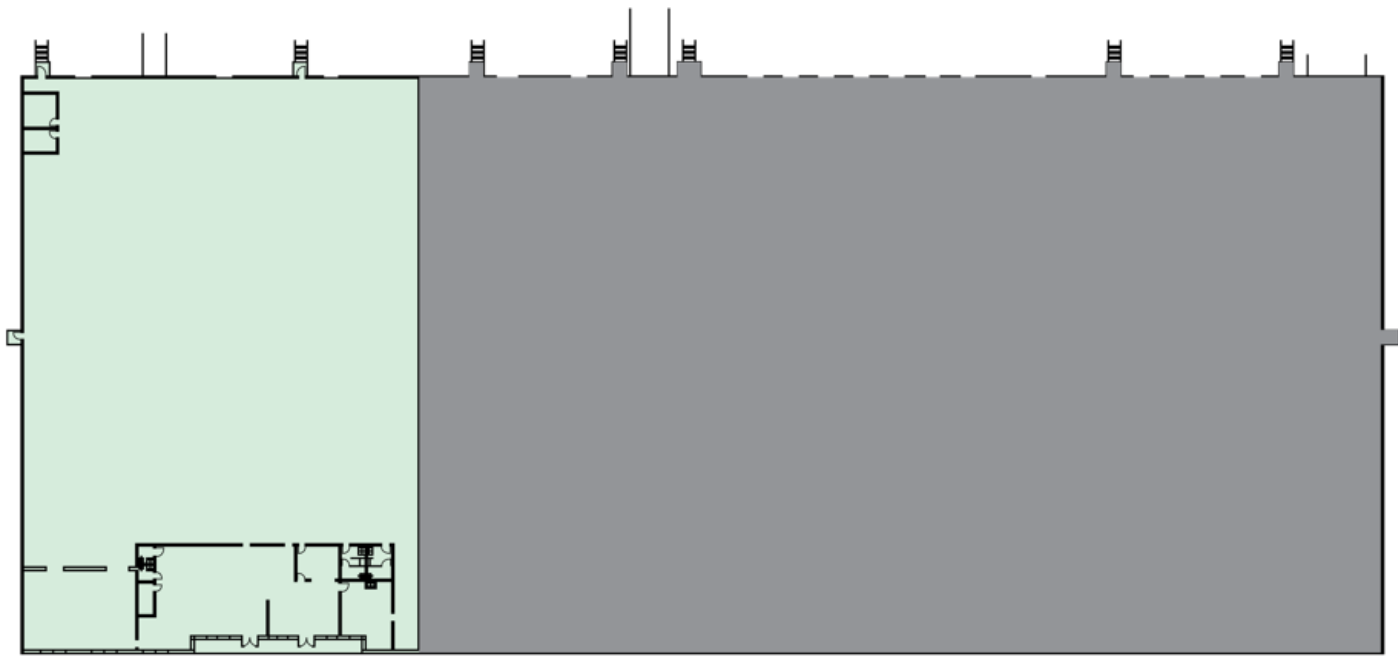
Ryan Conboy, SIOR  
Bobby Finch

(336) 821-3832 / [ryan.conboy@cushwake.com](mailto:ryan.conboy@cushwake.com)  
(336) 812-3303 / [bobby.finch@cushwake.com](mailto:bobby.finch@cushwake.com)



This is not an offer or acceptance of an offer to lease space. A lease will only be offered or made in a written agreement signed by landlord. No representation or warranty of any kind is made by landlord unless set forth in a written definitive lease executed by the landlord.

4224 Tudor Lane



28,000 SF  
Available 4/1/2026

4224 Tudor Lane

Size: 28,000 SF (5,040 SF Office)

Clear Height: 24'

Column Spacing: 50' x 50'

Lighting: LED

Dock Doors: Two (2)

Drive-up Ramp: One (1)

Sprinkler: ESFR

Electrical: TBD



