



**FOR LEASE**

# 1771 Junction Ave

San Jose, CA

## Industrial Space with Yard

### Property Highlights

- ±10,000 SF
- ±1,600 SF Office
- 1,600 Amps, 240 V, 3 Phase
- (4) Grade Level Doors
- (4) Restrooms
- Rear Fenced Yard (±14,300 SF)
- 16' Min. Clear
- Easy 880/101 Freeway Access
- Heavy Industrial Zoning

This document/email has been prepared by Colliers for advertising and general information only. Colliers makes no guarantees, representations or warranties of any kind, expressed or implied, regarding the information including, but not limited to, warranties of content, accuracy and reliability. Any interested party should undertake their own inquiries as to the accuracy of the information. Colliers excludes unequivocally all inferred or implied terms, conditions and warranties arising out of this document and excludes all liability for loss and damages arising there from. This publication is the copyrighted property of Colliers and /or its licensor(s). © 2024. All rights reserved. This communication is not intended to cause or induce breach of an existing listing agreement. [Colliers International Group Inc.]

**Asking Price:**

**\$1.65**  
GROSS

### CONTACT US

#### **Dave Evans**

Executive Vice President  
+1 408 806 3146  
david.evans@colliers.com  
CA License No. 00764837

#### **Greg Evans, sior**

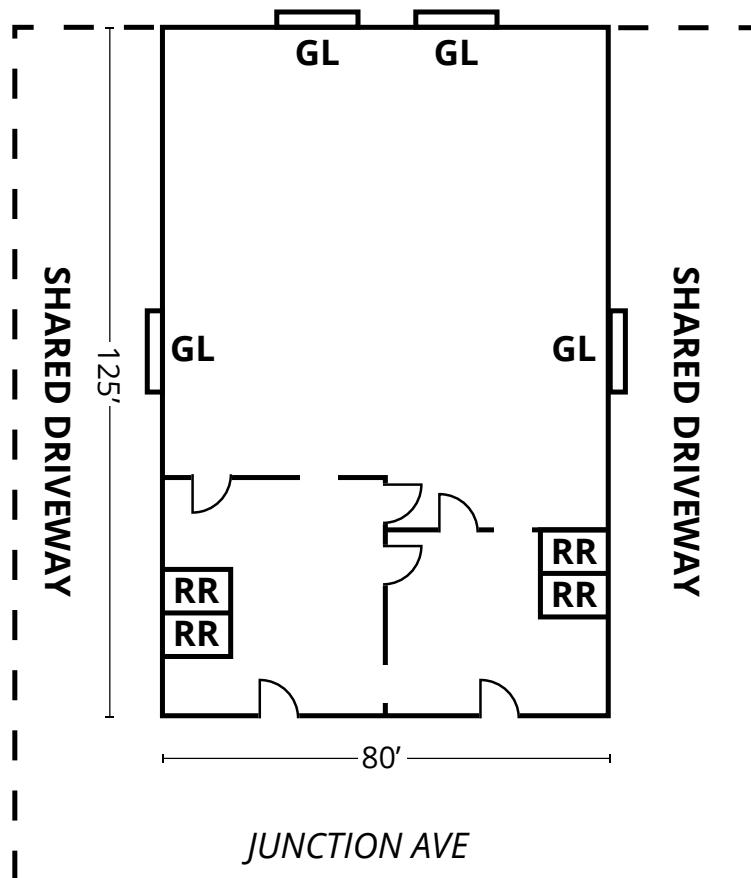
Senior Vice President  
+1 408 507 1787  
greg.evans@colliers.com  
CA License No. 01956927

#### **Colliers**

225 Santa Clara Street  
10th Floor, Suite 1000  
San Jose, CA 95113  
Main: +1 408 282 3800  
colliers.com/siliconvalley

# For Lease

## Site Plan



### CONTACT US

#### **Dave Evans**

Executive Vice President  
+1 408 806 3146  
david.evans@colliers.com  
CA License No. 00764837

#### **Greg Evans, SIOR**

Senior Vice President  
+1 408 507 1787  
greg.evans@colliers.com  
CA License No. 01956927

#### **Colliers**

225 Santa Clara Street  
10th Floor, Suite 1000  
San Jose, CA 95113  
Main: +1 408 282 3800  
colliers.com/siliconvalley