



OFFICE SPACE NEAR USF

10770 North 46th Street, Bldg. A, Suite 1200, Tampa, FL 33617

Liz Menéndez, CCIM
727.409.0101
liz@saundersrealestate.com



TABLE OF CONTENTS

CONFIDENTIALITY & DISCLAIMER

All materials and information received or derived from Saunders Real Estate its directors, officers, agents, advisors, affiliates and/or any third party sources are provided without representation or warranty as to completeness, veracity, or accuracy, condition of the property, compliance or lack of compliance with applicable governmental requirements, developability or suitability, financial performance of the property, projected financial performance of the property for any party's intended use or any and all other matters.

Neither Saunders Real Estate its directors, officers, agents, advisors, or affiliates makes any representation or warranty, express or implied, as to accuracy or completeness of the any materials or information provided, derived, or received. Materials and information from any source, whether written or verbal, that may be furnished for review are not a substitute for a party's active conduct of its own due diligence to determine these and other matters of significance to such party. Saunders Real Estate will not investigate or verify any such matters or conduct due diligence for a party unless otherwise agreed in writing.

EACH PARTY SHALL CONDUCT ITS OWN INDEPENDENT INVESTIGATION AND DUE DILIGENCE.

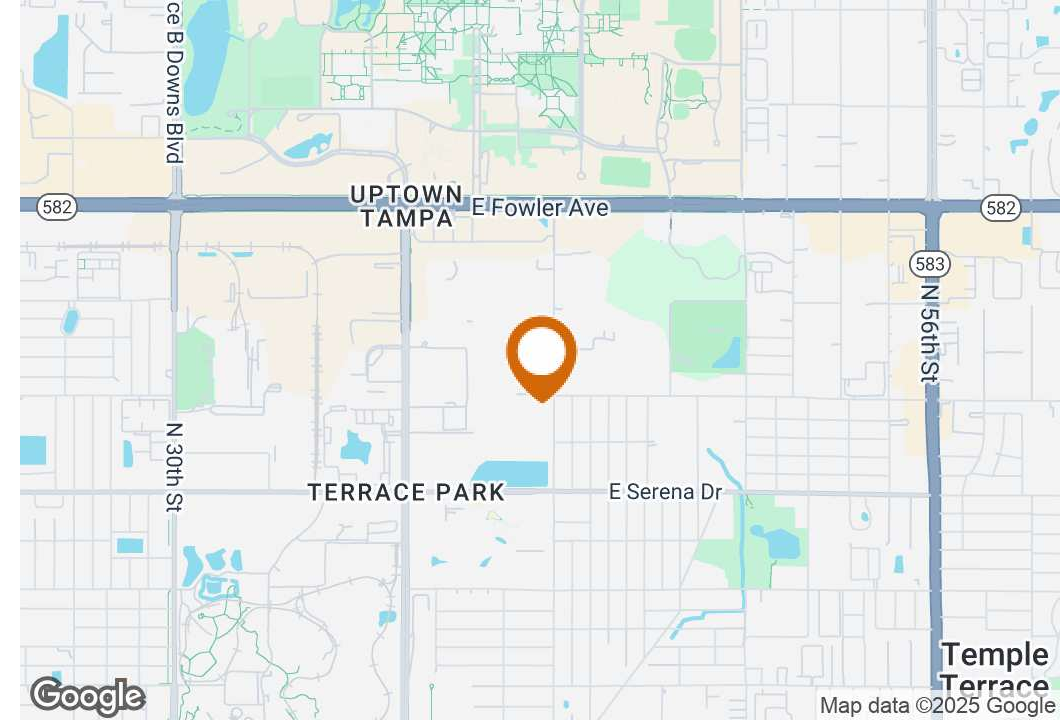
Any party contemplating or under contract or in escrow for a transaction is urged to verify all information and to conduct their own inspections and investigations including through appropriate third party independent professionals selected by such party. All financial data should be verified by the party including by obtaining and reading applicable documents and reports and consulting appropriate independent professionals. Saunders Real Estate makes no warranties and/or representations regarding the veracity, completeness, or relevance of any financial data or assumptions. Saunders Real Estate does not serve as a financial advisor to any party regarding any proposed transaction. All data and assumptions regarding financial performance, including that used for financial modeling purposes, may differ from actual data or performance. Any estimates of market rents and/or projected rents that may be provided to a party do not necessarily mean that rents can be established at or increased to that level. Parties must evaluate any applicable contractual and governmental limitations as well as market conditions, vacancy factors and other issues in order to determine rents from or for the property.

Legal questions should be discussed by the party with an attorney. Tax questions should be discussed by the party with a certified public accountant or tax attorney. Title questions should be discussed by the party with a title officer or attorney. Questions regarding the condition of the property and whether the property complies with applicable governmental requirements should be discussed by the party with appropriate engineers, architects, contractors, other consultants and governmental agencies. All properties and services are marketed by Saunders Real Estate in compliance with all applicable fair housing and equal opportunity laws.

TABLE OF CONTENTS

TABLE OF CONTENTS	2
PROPERTY SUMMARY	3
LOCATION DESCRIPTION	4
SITE PLAN	5
SUITE 1200 FLOOR PLAN	6
SUITE 475 FLOOR PLAN	7
REGIONAL & LOCATION MAP	8
DEMOGRAPHICS MAP & REPORT	9
COUNTY	10
CITY	11
NEIGHBORHOOD MAP	12
MARKET AREA MAP	13
EXTERIOR PHOTOS	14
INTERIOR PHOTOS	15
INTERIOR PHOTOS	16

PROPERTY SUMMARY



OFFERING SUMMARY

Lease Rate:	\$18.00 SF/yr (NNN)
Building Size:	29,246 SF
Available SF:	4,559 SF
Zoning:	Industrial Heavy
Building Letter:	A
Suites:	1200

PROPERTY OVERVIEW

4,559 SF pristine office/flex space. The space consists of 8 offices, 3 group rooms, a reception area, a kitchen, and three bathrooms spread across two suites. Handicap accessible. Located within University Corporate Park, adjacent to Moffitt Cancer Center Hospital, just south of the University of South Florida, a few miles from I-75 and Busch Gardens Tampa.

PROPERTY HIGHLIGHTS

- Office with frontage on 46th Street in University Corporate Park.
- Prime Location near I-75, USF, Busch Gardens, and Moffitt Cancer Center.
- Handicap Accessible.

LOCATION DESCRIPTION



LOCATION DESCRIPTION

Located at 10770 North 46th Street in Tampa, FL 33617, this property offers a prime location with excellent access to major highways and key landmarks. Positioned just 2 miles east of Interstate 75, it provides seamless north-south connectivity, while Interstate 4, only 3 miles south, offers a direct route between Tampa and Orlando. U.S. Highway 301, located about 2.5 miles east, adds further accessibility to surrounding commercial and residential areas.

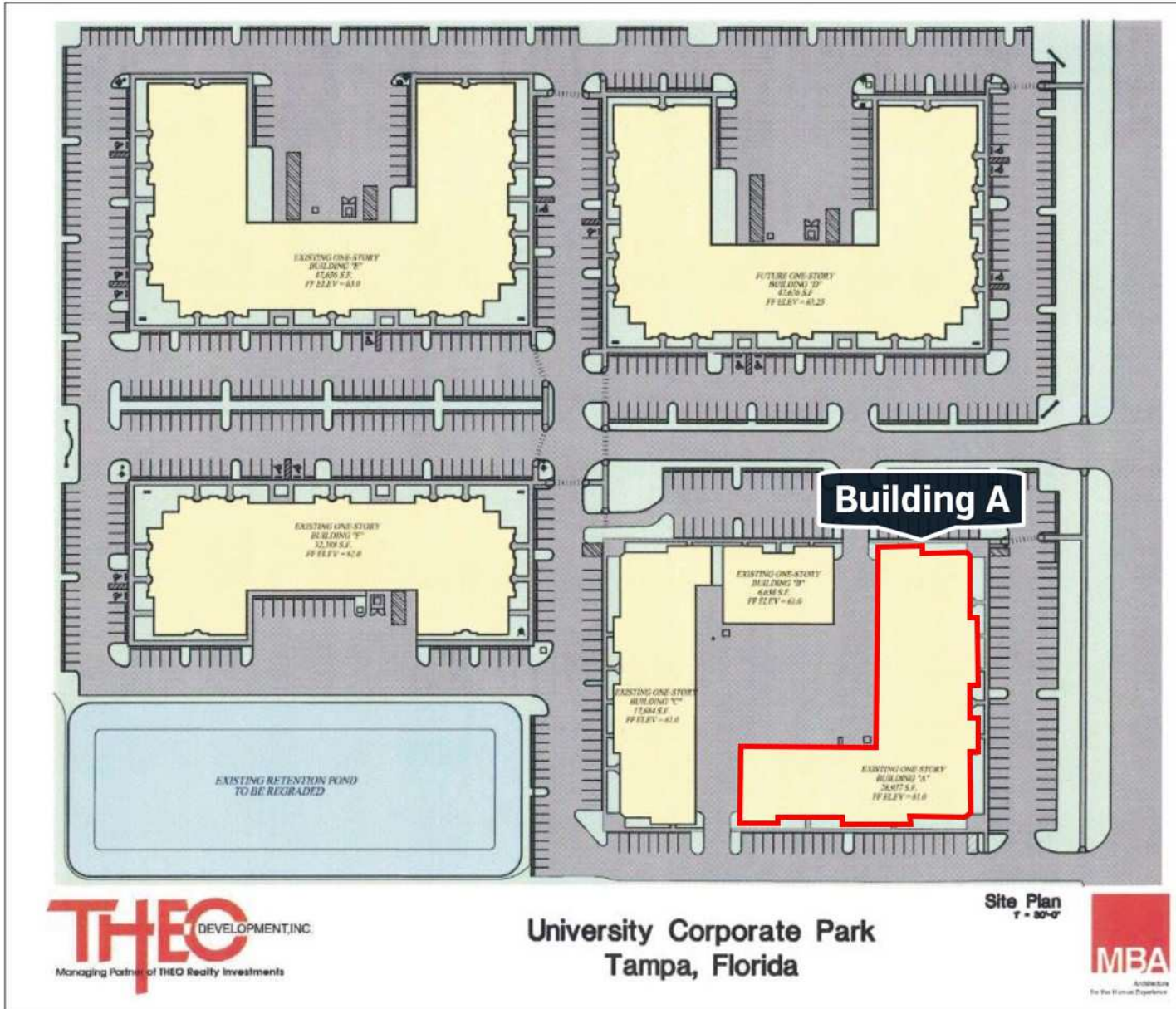
The property is adjacent to the Moffitt Cancer Center McKinley Hospital and two miles south of the University of South Florida, making it an attractive location for businesses serving the hospital and university communities. Additionally, Busch Gardens Tampa and Adventure Island, popular entertainment destinations, are less than 2 miles southwest.

SITE PLAN

39

Improvements Description and Analysis

Site Plan



University Corporate Park

SUITE 1200 FLOOR PLAN



ATLANTA
706.623.2384
ORLANDO
407.971.8688
TAMPA
727.548.9595

www.measureDYNAMICS.COM

PREPARED FOR:

PROJECT NAME:

University Corporate Park
10770 North 46th Street
Building A
Tampa, Florida 33617

PROJECT NUMBER:

Theo-004

DRAWN BY:

DEA

CHECKED BY:

DEA

DATE:

10/25/2018

SCALE:

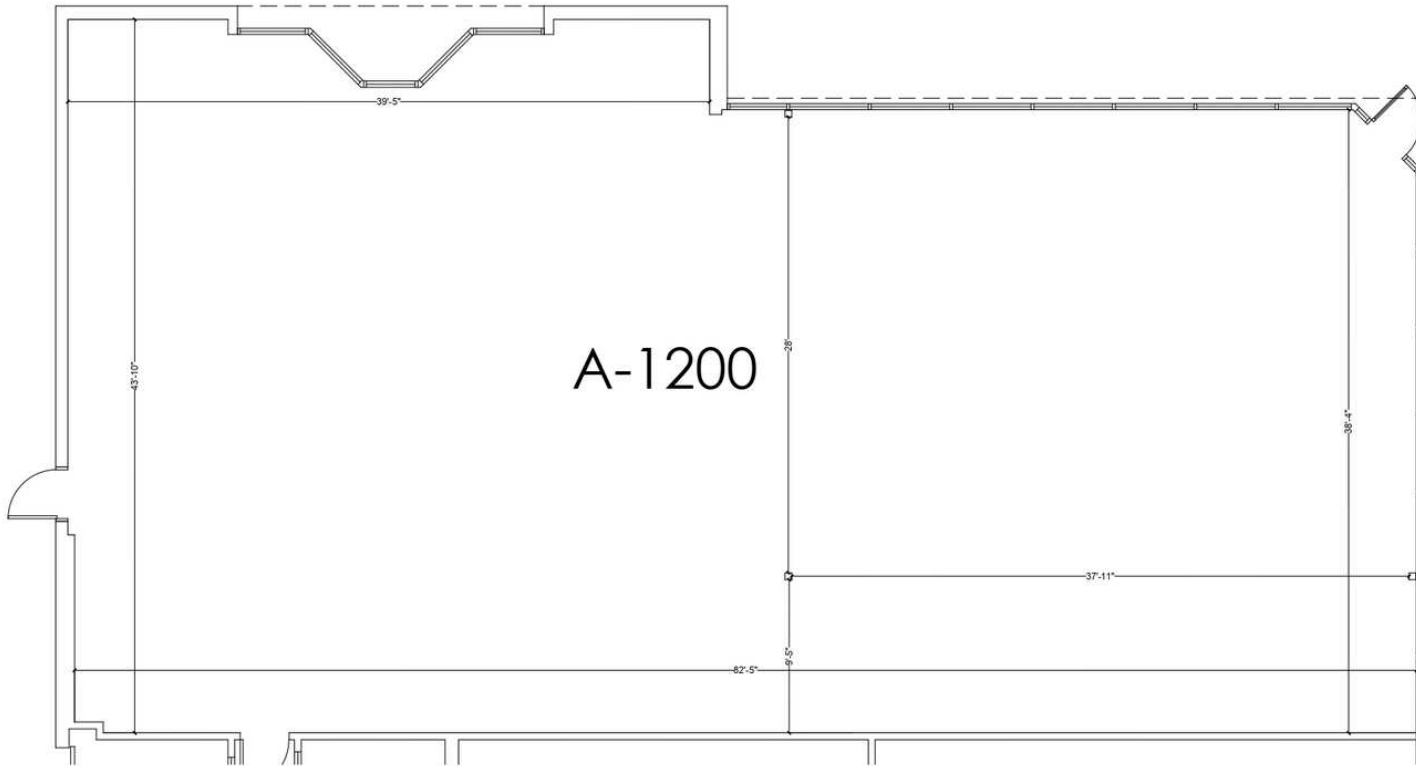
SCALE TO FIT

SHEET TITLE

SUITE A-1200 FLOOR PLAN

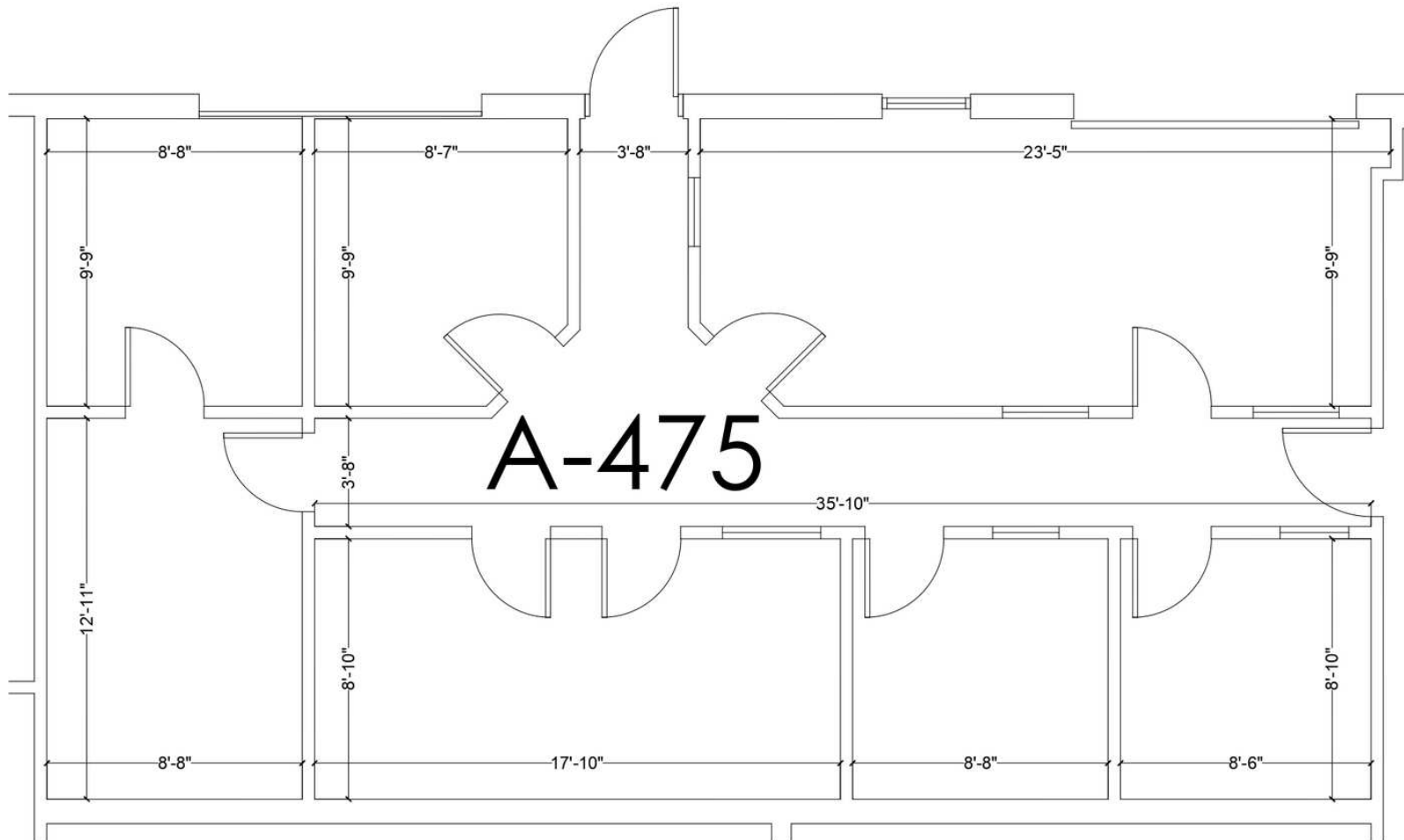
SHEET NUMBER:

A1.1



Rentable Area: 3,456 square feet
ANSI/BOMA Z65.1 - 2017 Office Standard

SUITE 475 FLOOR PLAN



Rentable Area: 1,103 square feet
ANSI/BOMA Z65.1 - 2017 Office Standard



ATLANTA
706.623.2384
ORLANDO
407.971.8688
TAMPA
727.548.9595

www.measureDYNAMICS.COM

PREPARED FOR:

PROJECT NAME:

University Corporate Park
10770 North 46th Street
Building A
Tampa, Florida 33617

PROJECT NUMBER:

Theo-004

DRAWN BY:

DEA

CHECKED BY:

DEA

DATE:

10/25/2018

SCALE:

SCALE TO FIT

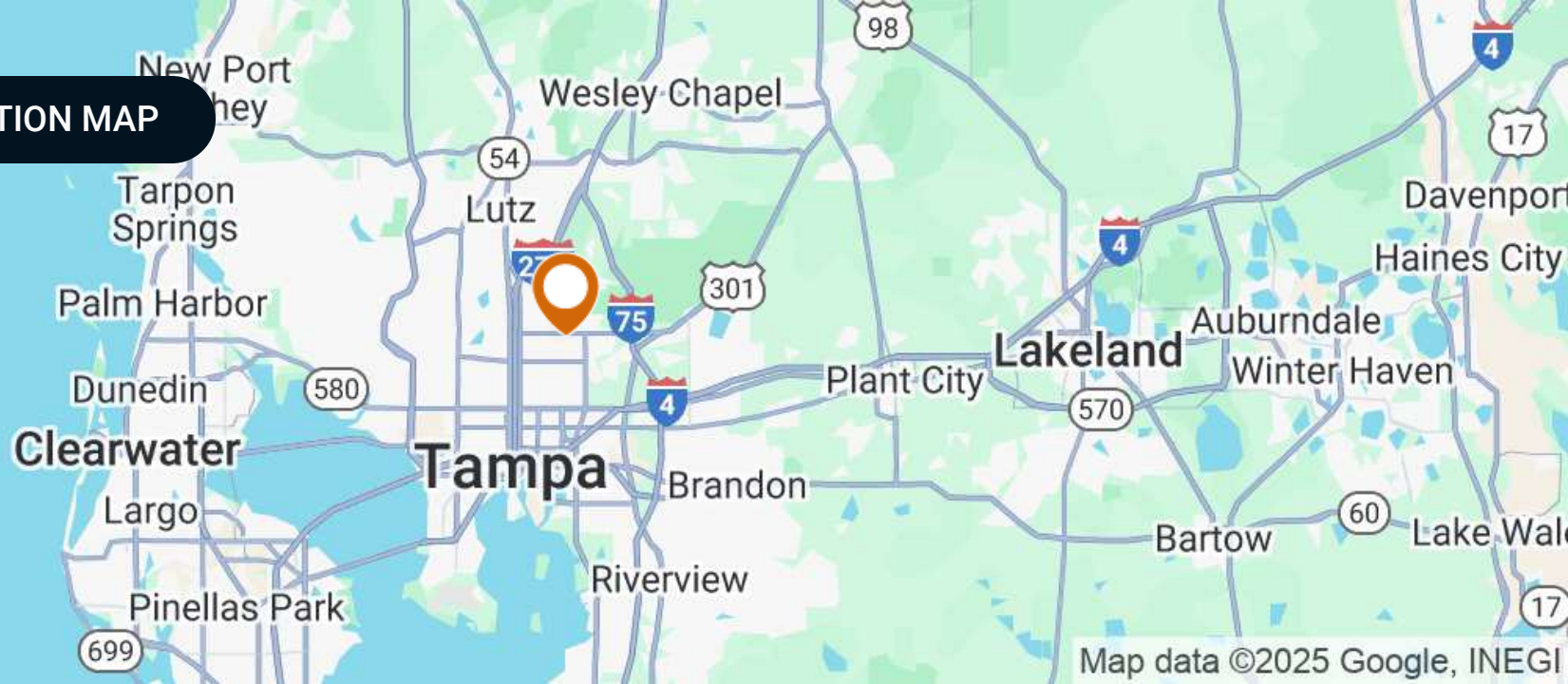
SHEET TITLE

SUITE A-475 FLOOR
PLAN

SHEET NUMBER:

A1.1

REGIONAL & LOCATION MAP

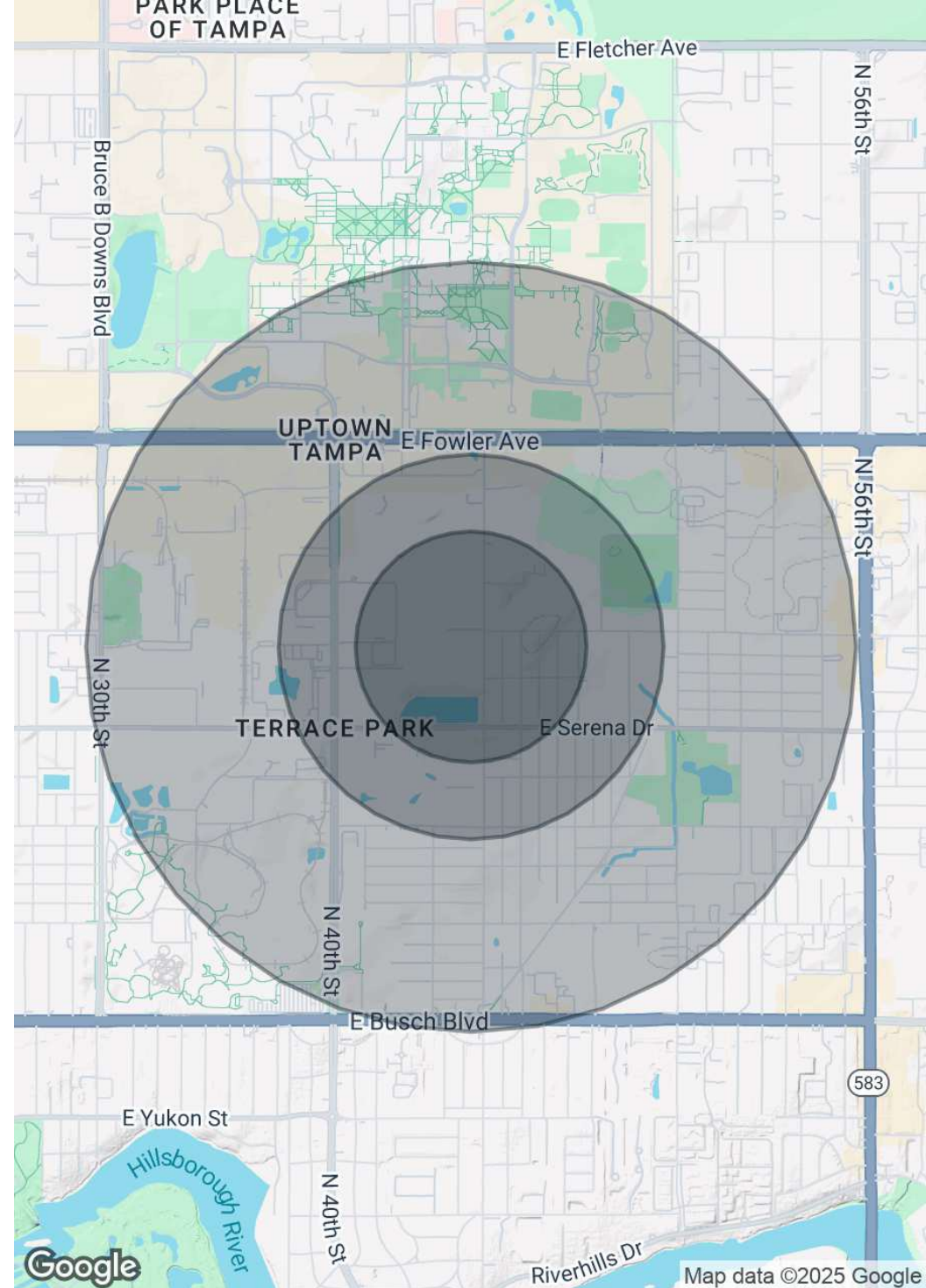


DEMOGRAPHICS MAP & REPORT

POPULATION	0.3 MILES	0.5 MILES	1 MILE
Total Population	1,061	4,159	13,976
Average Age	30	32	35
Average Age (Male)	31	33	34
Average Age (Female)	29	32	36

HOUSEHOLDS & INCOME	0.3 MILES	0.5 MILES	1 MILE
Total Households	271	1,165	4,746
# of Persons per HH	3.9	3.6	2.9
Average HH Income	\$52,308	\$53,548	\$47,736
Average House Value	\$226,225	\$228,949	\$266,747

Demographics data derived from AlphaMap





HILLSBOROUGH COUNTY FLORIDA



Founded	1834	Density	1,400.5 (2019)
County Seat	Tampa	Population	1,521,410 (2023)
Area	1,051 sq. mi.	Website	hillsboroughcounty.org

Hillsborough County is located in the west-central portion of the U.S. state of Florida. In the 2010 census, the county's population sat at 1,233,511, making it the fourth-most populous county in Florida and the state's most populous county outside the Miami Metropolitan Area. As of a 2023 estimate, the population of Hillsborough County has now grown to 1,521,410, surpassing the populations of 12 separate US states. Leading this growth, Tampa serves as the county seat and largest city in Hillsborough County. Additionally, the county is part of the Tampa–St. Petersburg–Clearwater Metropolitan Statistical Area.



TAMPA HILLSBOROUGH COUNTY

Founded	1855
Population	396,324 (2023)
Area	170.6 sq mi
Website	tampagov.net
Major Employers	Bloomin' Brands Sykes Enterprises Hillsborough County Public Schools University of South Florida

With a population of nearly 400,000, Tampa is the 3rd largest city in Florida and the 53rd largest city in the United States. With its surrounding cities, Tampa is part of the metropolitan area most commonly referred to as the 'Tampa Bay Area.' It is located on the west coast of Florida, with an average annual temperature of 73.1 degrees. Tampa's economy is founded on a diverse base: tourism, agriculture, construction, finance, health care, government, technology, and the Port of Tampa. Located near Downtown Tampa's Channel District, the bay's port is the largest in Florida. Bayshore Boulevard runs along the bay and is east of the historic Hyde Park neighborhood.

For U.S. Census purposes, Tampa is part of the Tampa-St. Petersburg-Clearwater, Florida Metropolitan Statistical Area. The four-county area is composed of roughly 3.1 million residents, making it the second-largest metropolitan statistical area (MSA) in Florida. This MSA also ranks as the fourth largest in the Southeastern United States behind Washington, D.C., Miami, and Atlanta. The Greater Tampa Bay area has over 4 million residents and generally includes the Tampa and Sarasota metro areas.

NEIGHBORHOOD MAP



Moffitt Cancer Center McKinley Hospital



Temple Terrace

Map data ©2025 Google Imagery ©2025 Airbus, Maxar Technologies

MARKET AREA MAP



Map data ©2025 Imagery ©2025 Airbus, Landsat / Copernicus, Maxar Technologies

EXTERIOR PHOTOS



INTERIOR PHOTOS



INTERIOR PHOTOS



ADVISOR BIOGRAPHY



LIZ MENENDEZ, CCIM

Senior Advisor

liz@saundersrealestate.com

Direct: **877.518.5263 x465** | Cell: **727.409.0101**

PROFESSIONAL BACKGROUND

Liz Menéndez, CCIM is a Senior Advisor at Saunders Real Estate.

Operating out of Tampa, Florida, Liz expertly serves her commercial real estate clients by providing superior service and thoughtful knowledge throughout every stage of the real estate process. Her personal approach and service commitment to clients enables Liz to create meaningful, positive relationships with clients while helping them close on successful real estate transactions.

She has been a REALTOR® since 2005. Her experience in both residential and commercial sales and leasing provides Liz with a wealth of knowledge capable of tackling any transaction. In her previous roles, Liz has served as a Certified Short Sales Specialist, Commercial Leasing Agent, Commercial Sales Agent, and a Residential Sales Agent.

Liz also earned the designation of Certified Commercial Investment Member (CCIM) in 2008. Prior to working in real estate, her seventeen-year career in banking included: financial areas of banking administration, commercial and consumer lending, business banking, and financial consulting - Series 6 and 63 licenses. She also graduated from the University of South Florida with her BA in Finance.

She is a proud, lifetime resident of South Tampa and is very familiar with the entire Tampa Bay region. As a full-time professional real estate advisor, it is more than just her career, it is her passion.

Liz specializes in:

- Office
- Industrial
- Retail
- Leasing & Tenant Representation
- Medical Office



For more information visit www.saundersrealestate.com

HEADQUARTERS

1723 Bartow Road
Lakeland, FL 33801
863.648.1528

ORLANDO

605 E Robinson Street
Suite 410
Orlando, FL 32801
407.516.4300

NORTH FLORIDA

356 NW Lake City Avenue
Lake City, FL 32055
352.364.0070

GEORGIA

203 E Monroe Street
Thomasville, GA 31792
229.299.8600

ARKANSAS

112 W Center St, Suite 501
Fayetteville, AR 72701
479.582.4113

