

# DENTAL OFFICE AVAILABLE

FOR LEASE

5125 South Kipling Parkway  
Littleton, CO 80127





# PROPERTY FEATURES



- Landmark building with superior street visibility
- Secure 24/7 access to building and camera system
- Numerous retail amenities nearby
- Close to RTD

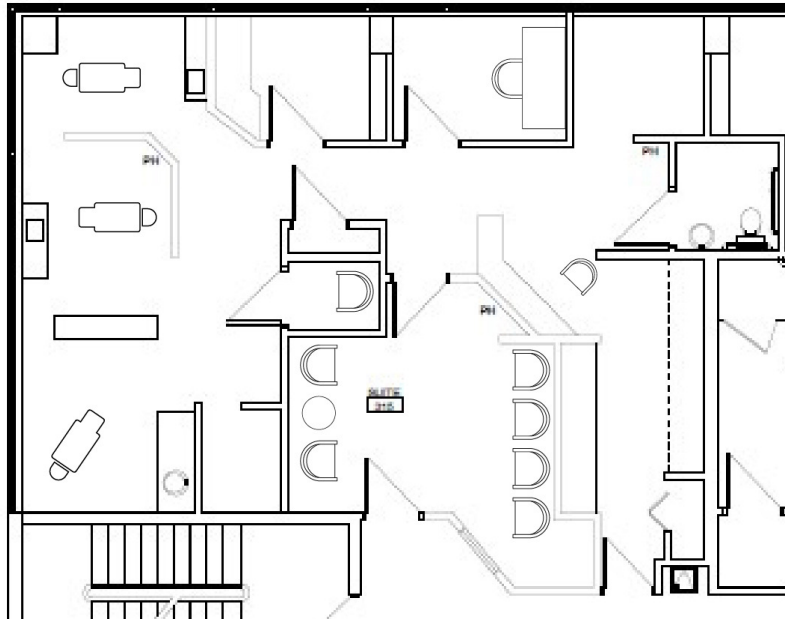


- 1,250 SF
- Amazing mountain views from two offices
- 3 dental bays
- One lab area
- Private restroom

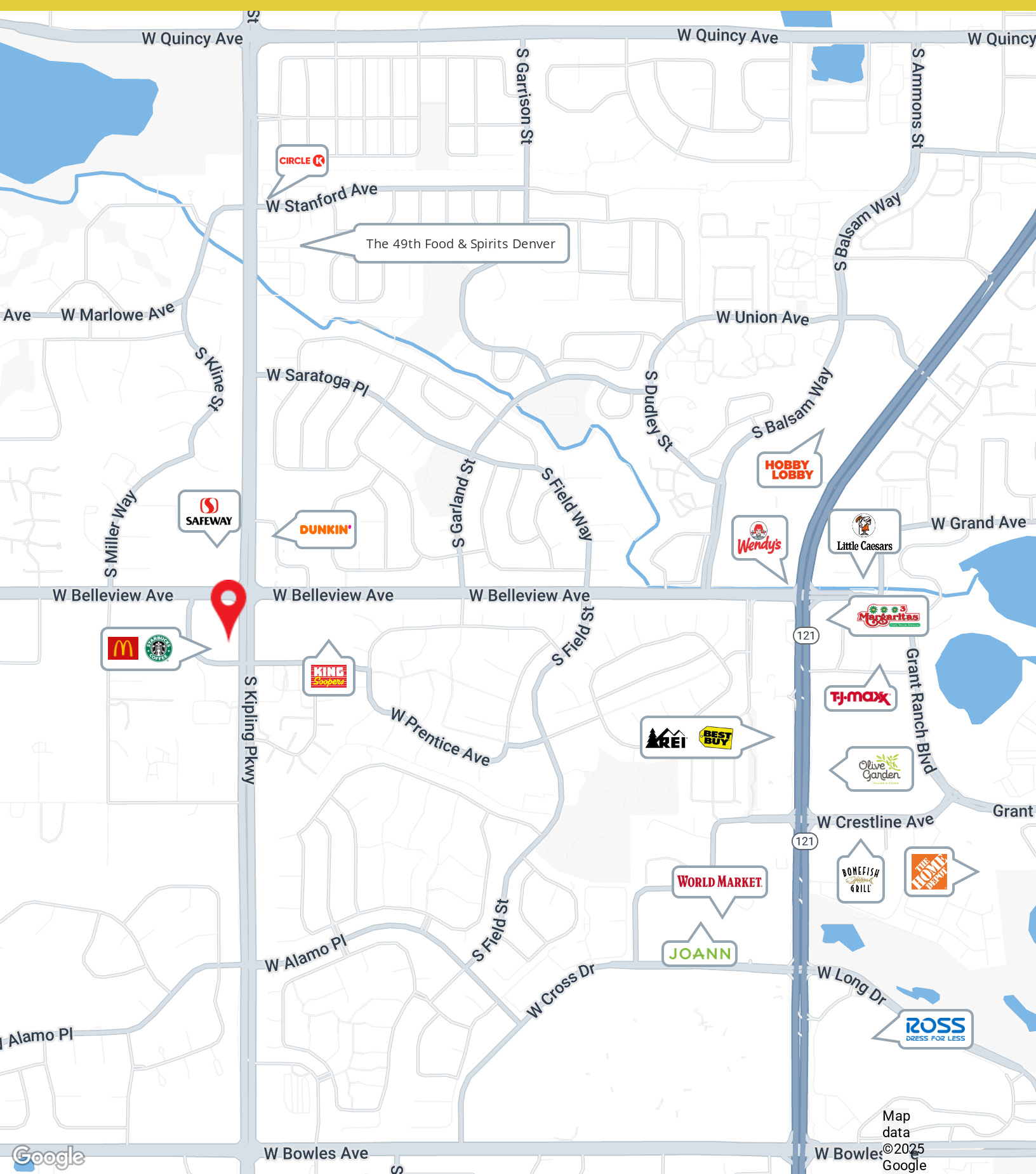
**For Lease:**  
**\$22.00 SF/YR**  
**(FULL SERVICE)**



# FLOOR PLANS



# RETAILER MAP





**Gabriella Barnes**

Broker

720.278.8111

[gbarnes@intcre.com](mailto:gbarnes@intcre.com)



5300 DTC PARKWAY | GREENWOOD VILLAGE, CO 80111 | [WWW.INTELICACRE.COM](http://WWW.INTELICACRE.COM)