

Shallowford Office Park - Building 700

4343 Shallowford Road

Marietta GA, 30062

± 1,070 Sq. Ft.

FOR LEASE

VIDEO TOUR  LINK <https://youtube.com/shorts/CrQbdEEx8R8?>



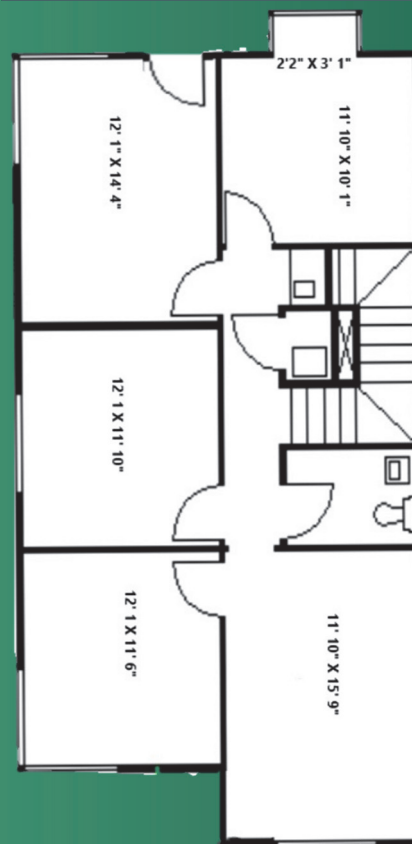
GROUND LEVEL WALK UP

Suite 771

Terrace Level

± 1,070 Sq. Ft.

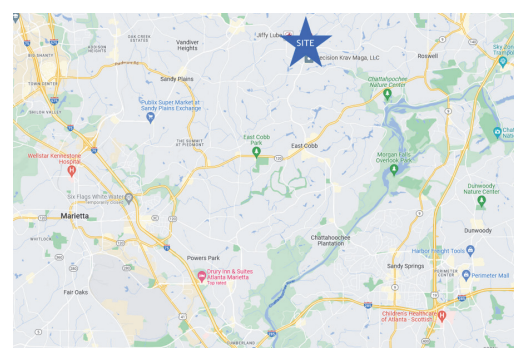
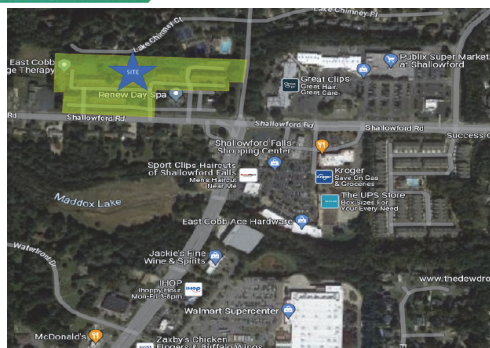
\$16.50 per sq ft • \$1,471.25/mo



PROPERTY HIGHLIGHTS

- Park-Like Grounds
- Multiple Access Points
- Area Amenities Include Numerous Restaurants, Hotels, Conference Centers, Athletic Clubs and Shopping.

MAP



Jonathan A. Sarnat | Empire South Commercial Real Estate | 404-213-3990 | jon@empiresouth.com

Information is from sources deemed to be reliable but no warranty or representation is made as to the accuracy thereof