

17638 Van Owen Street, Los Angeles, CA 91406

NEC of Vanowen Street and White Oak Avenue

Heart of the San Fernando Valley

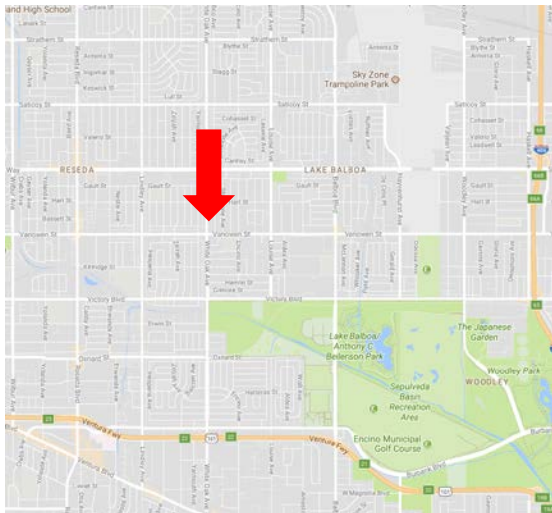
HIGHLIGHTS

Features

- 1,500 sq ft. Available
- \$2.50 psf/mo + approx \$.50 NNN
- Former Radio Shack

Demos

Population	1-mi.	3-mi.	5-mi.
2013 Male Population	16,688	99,229	188,885
2013 Female Population	16,411	100,753	193,593
% 2013 Male Population	50.42%	49.62%	49.38%
% 2013 Female Population	49.58%	50.38%	50.62%
2013 Total Population: Adult	24,932	154,061	296,632
2013 Total Daytime Population	29,256	210,550	414,982
2013 Total Employees	11,374	101,510	203,535
2013 Total Population: Median Age	35	37	38



Contact: Eric Friedland
Cell: 818.398.0354 | eric@cirecre.com
BRE # 01969648



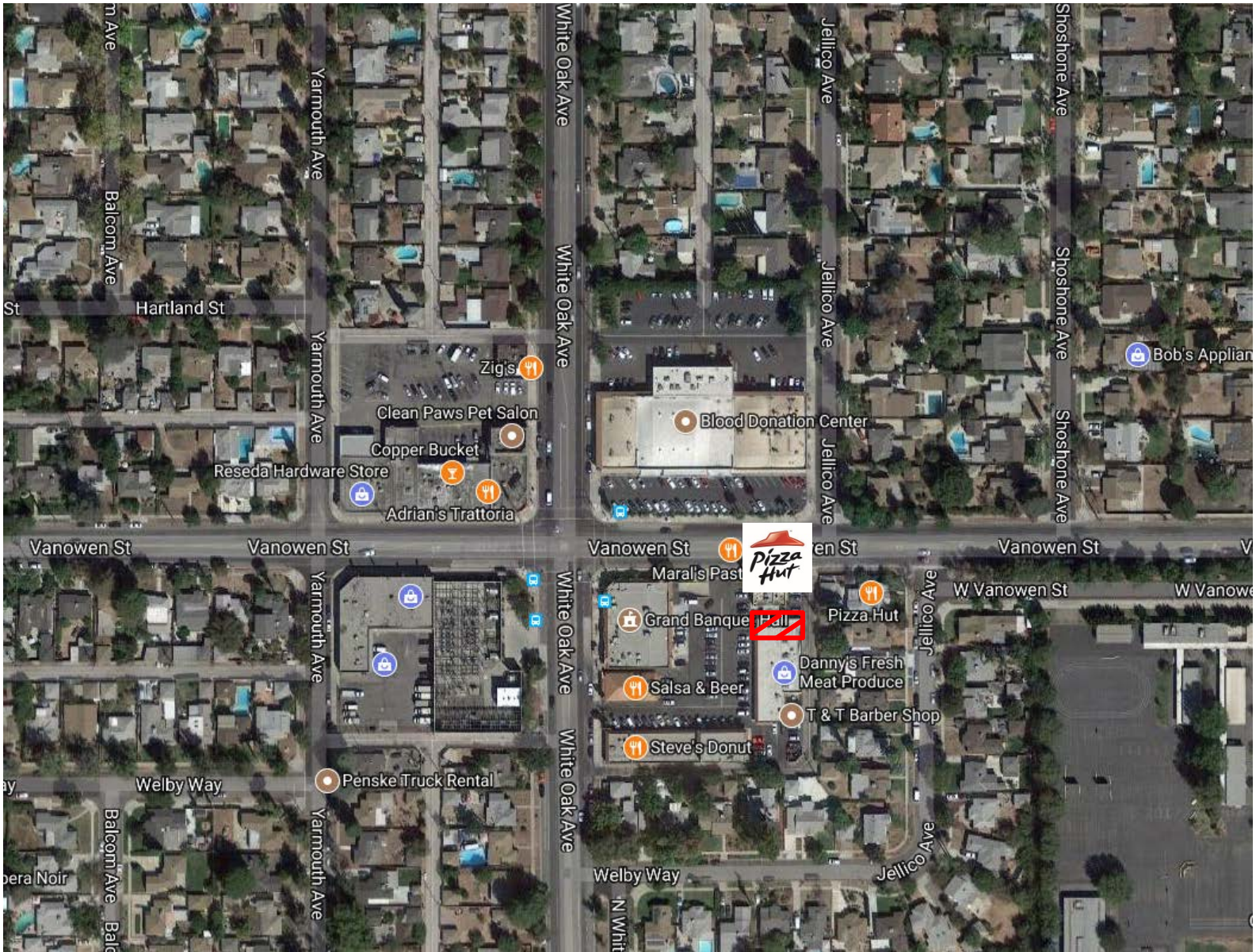
Neighboring Retailers



CIRE Commercial Real Estate, Inc. | 20855 Ventura Blvd., Suite 7, Woodland Hills, CA 91364 | cirecre.com

This information has been secured from sources we believe to be reliable, but we make no representations or warranties, expressed or implied, as to the accuracy of the information. References to square footage are approximate. References to neighboring retailers are subject to change, and may not be adjacent to the vacancy being marketed either prior to, during, or after leases are signed. Lessee must verify the information and bears all risk for any inaccuracies.

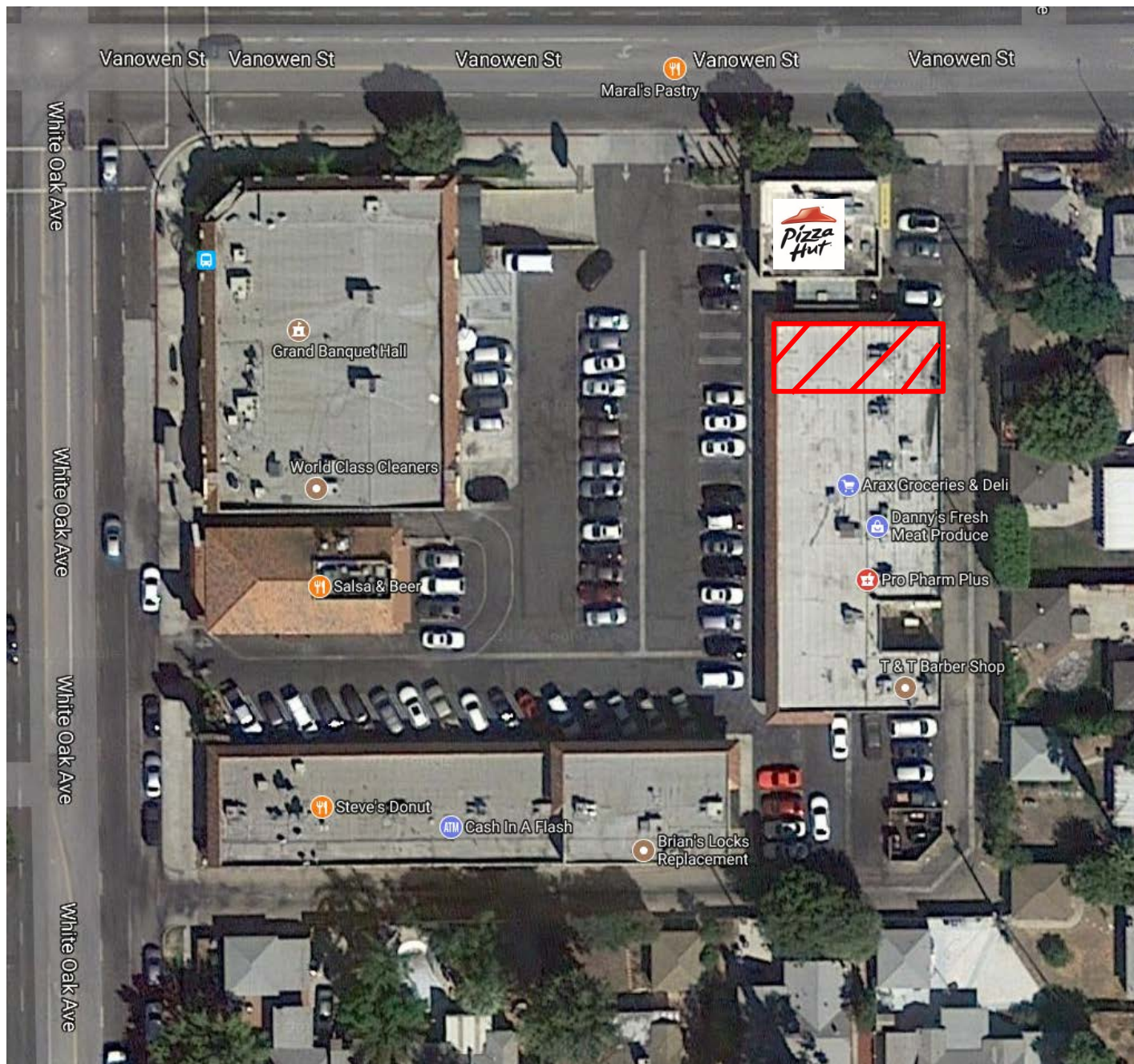




CIRE Commercial Real Estate, Inc. | 20855 Ventura Blvd., Suite 7, Woodland Hills, CA 91364 | cirecre.com

This information has been secured from sources we believe to be reliable, but we make no representations or warranties, expressed or implied, as to the accuracy of the information. References to square footage are approximate. References to neighboring retailers are subject to change, and may not be adjacent to the vacancy being marketed either prior to, during, or after leases are signed. Lessee must verify the information and bears all risk for any inaccuracies.

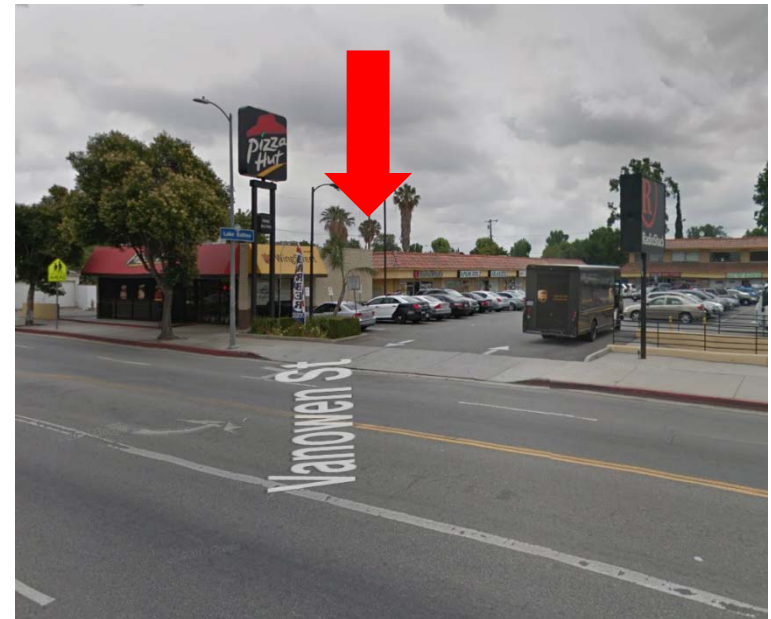




CIRE Commercial Real Estate, Inc. | 20855 Ventura Blvd., Suite 7, Woodland Hills, CA 91364 | cirecre.com

This information has been secured from sources we believe to be reliable, but we make no representations or warranties, expressed or implied, as to the accuracy of the information. References to square footage are approximate. References to neighboring retailers are subject to change, and may not be adjacent to the vacancy being marketed either prior to, during, or after leases are signed. Lessee must verify the information and bears all risk for any inaccuracies.





CIRE Commercial Real Estate, Inc. | 20855 Ventura Blvd., Suite 7, Woodland Hills, CA 91364 | cirecre.com

This information has been secured from sources we believe to be reliable, but we make no representations or warranties, expressed or implied, as to the accuracy of the information. References to square footage are approximate. References to neighboring retailers are subject to change, and may not be adjacent to the vacancy being marketed either prior to, during, or after leases are signed. Lessee must verify the information and bears all risk for any inaccuracies.





CIRE Commercial Real Estate, Inc. | 20855 Ventura Blvd., Suite 7, Woodland Hills, CA 91364 | cirecre.com

This information has been secured from sources we believe to be reliable, but we make no representations or warranties, expressed or implied, as to the accuracy of the information. References to square footage are approximate. References to neighboring retailers are subject to change, and may not be adjacent to the vacancy being marketed either prior to, during, or after leases are signed. Lessee must verify the information and bears all risk for any inaccuracies.



Vanowen Street

