

Industrial building for sale

1687 Roosevelt Avenue
Bohemia, NY 11716



Freestanding building in the heart of the Bohemia industrial park

Additional Highlights

- Freestanding, self-contained building
- Ideal for warehouse and manufacturing
- Additional 1,200 sf freestanding office building on site that can be occupied, leased out, or removed for additional parking or outdoor storage

Building Information

Total RSF	9,080 sf
Land Area	0.69 acres
Office Portion	15%
Ceiling Height	12' – 14' clear
Loading	1 drive-in
Power	400 amps
Parking	Ample
Heat	Gas
Taxes	\$28,102 per annum
Asking Price	\$2,695,000

Industrial building for sale

1687 Roosevelt Avenue, Bohemia, NY 11716

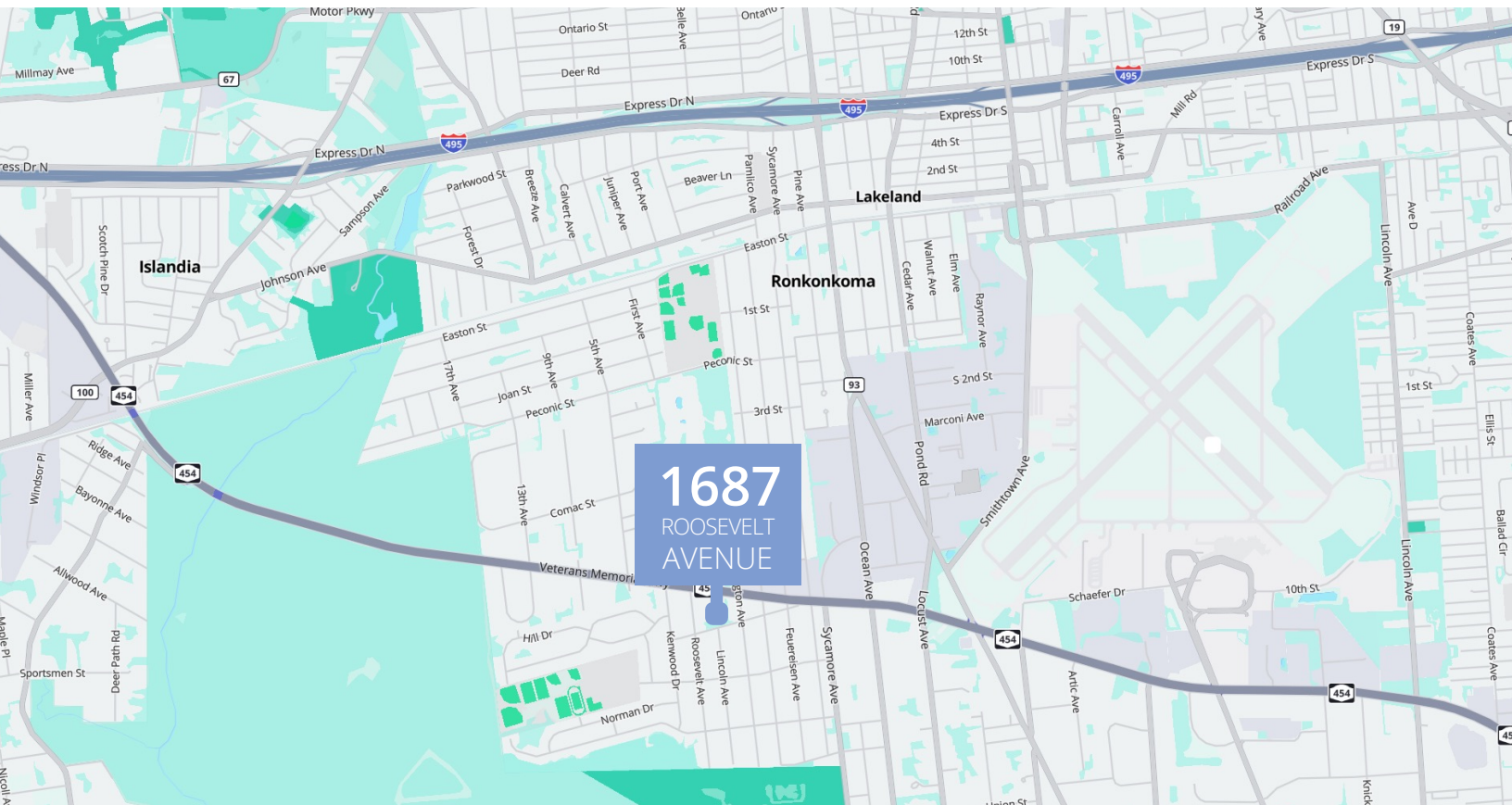


Warehouse drive-in



1,200 sf standalone office

Area Map



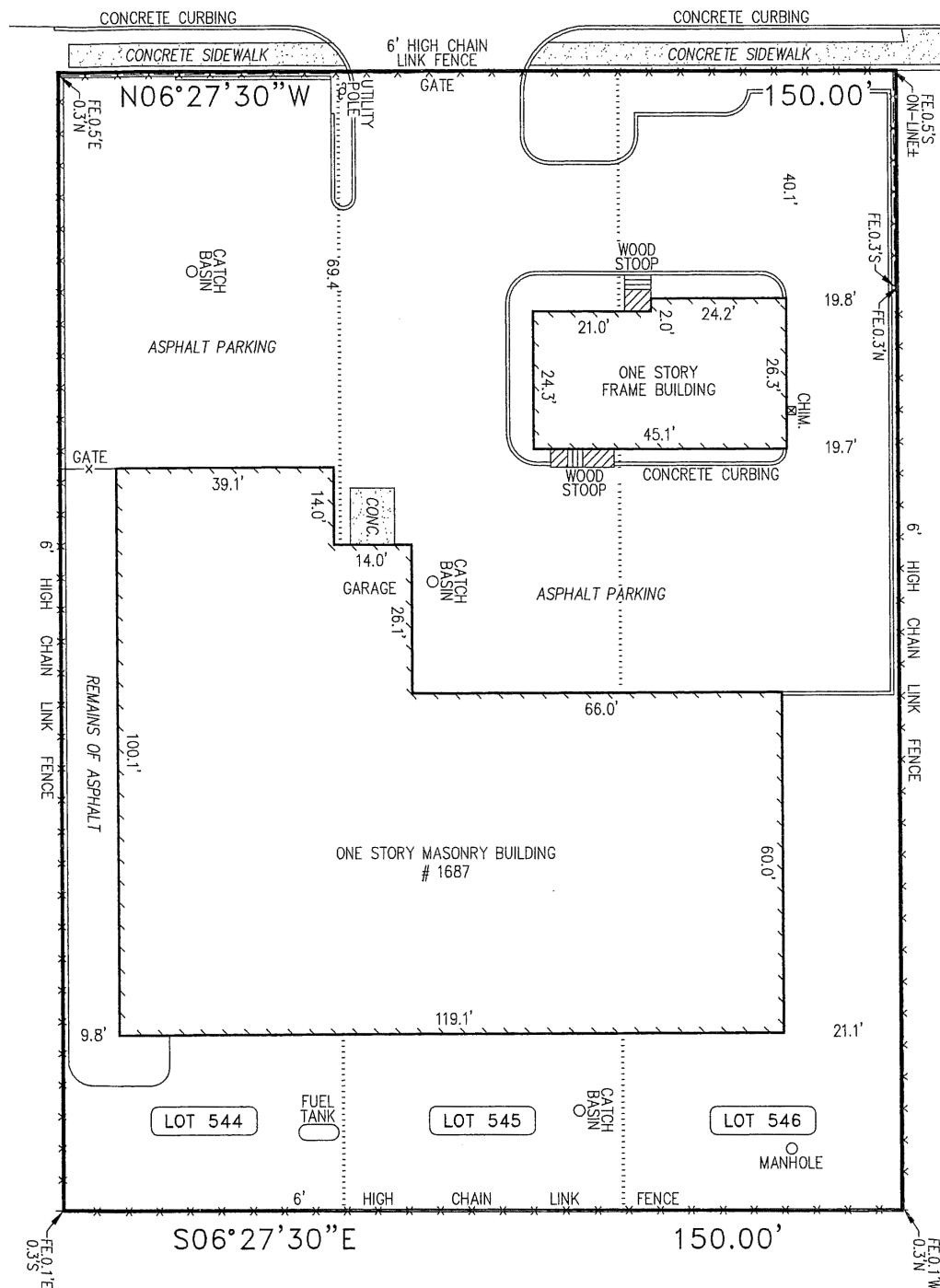
Get more information:

Paul Farrell, Associate | D. 516 962 5407 | M: 631 662 3441 | paul.farrell@avisonyoung.com

Avison Young Long Island | 58 S. Service Road, Suite 110 | Melville, NY 11747 | 516 962 5400 | avisonyoung.com

©2025 Avison Young - New York, LLC. All rights reserved. E. & O.E.: The information contained herein was obtained from sources which we deem reliable and, while thought to be correct, is not guaranteed by Avison Young.

**AVISON
YOUNG**



Get more information:

Paul Farrell, Associate | D. 516 962 5407 | M: 631 662 3441 | paul.farrell@avisonyoung.com

Avison Young Long Island | 58 S. Service Road, Suite 110 | Melville, NY 11747 | 516 962 5400 | avisonyoung.com

©2025 Avison Young - New York, LLC. All rights reserved. E. & O.E.: The information contained herein was obtained from sources which we deem reliable and, while thought to be correct, is not guaranteed by Avison Young.