



FOR SALE

Flex Industrial Bay

839 South Kings Highway

Fort Pierce, FL 34945

PROPERTY OVERVIEW

1,552 SF flex industrial bay located just off the I-95 interchange in Fort Pierce. This industrial condominium unit contains a well finished front office and open warehouse space with 20' clear height. This modern flex warehouse facility has ample parking and is setup to cater to a variety of business needs. Also offered for lease @ \$16.00 / SF Gross.

OFFERING SUMMARY

Unit Size: 1,552 SF
Zoning: IL (Light Industrial) - St. Lucie County



COOPER OSTEEN
VICE PRESIDENT/BROKER
Mobile 772.332.9544
costeen@slccommercial.com

772.220.4096 | slccommercial.com

[Click For Permitted Uses](#)

SALE PRICE

\$350,000



SLC Commercial
Realty & Development

The information contained herein has been obtained from sources believed to be reliable, but no warranty or representation, expressed or implied, is made. All sizes and dimensions are approximate. Any prospective buyer should exercise prudence and verify independently all significant data and property information. This is NOT an offer of sub-agency or co-brokerage.

Property Details & Highlights

839 S KINGS HWY

FOR SALE

Building Name	839 S Kings Hwy
Property Type	Industrial
Property Subtype	Industrial Condo
Building Size	19,341 SF
Year Built	2006
Year Last Renovated	2017
Number of Floors	1
Average Floor Size	1,552 SF
Construction Status	Existing
Free Standing	No

Flex industrial project located just off I-95 / Orange Avenue interchange on South King's Highway. King's Highway / Orange Avenue marks ground zero of the exploding industrial growth in Fort Pierce. This location provides great access not only to the major markets of South, West, and Central Florida, but also to key growth areas of the Treasure Coast.



- Interchange proximity
- Tilt wall construction, 20' clear
- Rear bay door access
- Ample parking
- 2nd floor mezzanine storage

Exterior Photos

839 S KINGS HWY

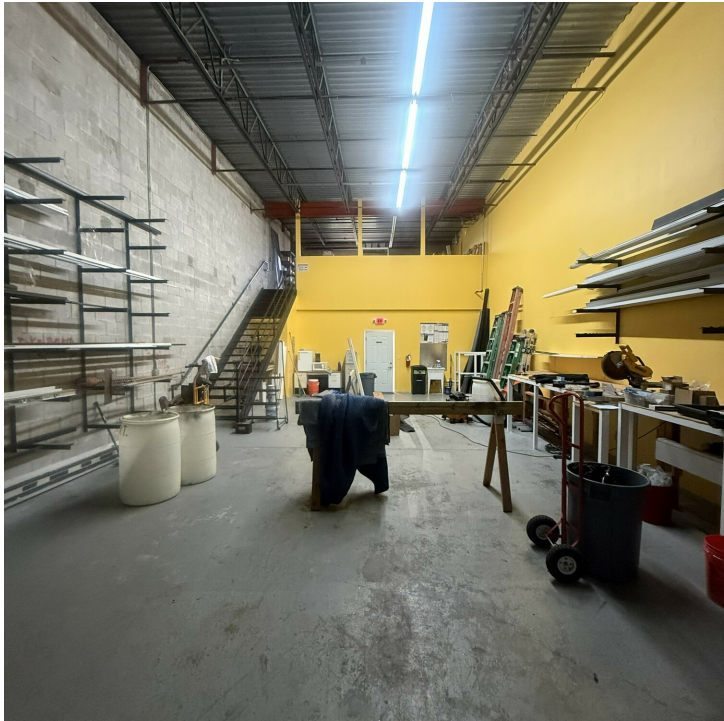
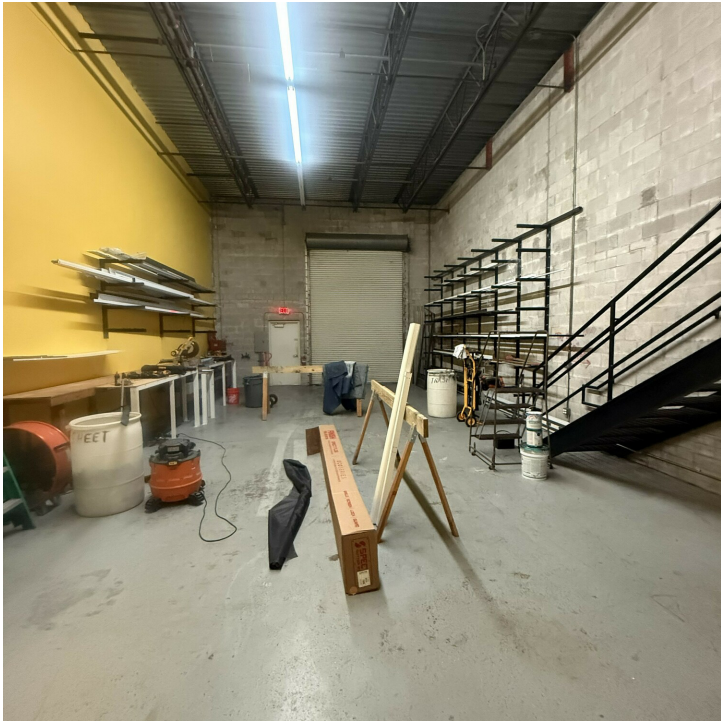
FOR SALE



Interior Photos

839 S KINGS HWY

FOR SALE



First Source Commerce Park Site

839 S KINGS HWY

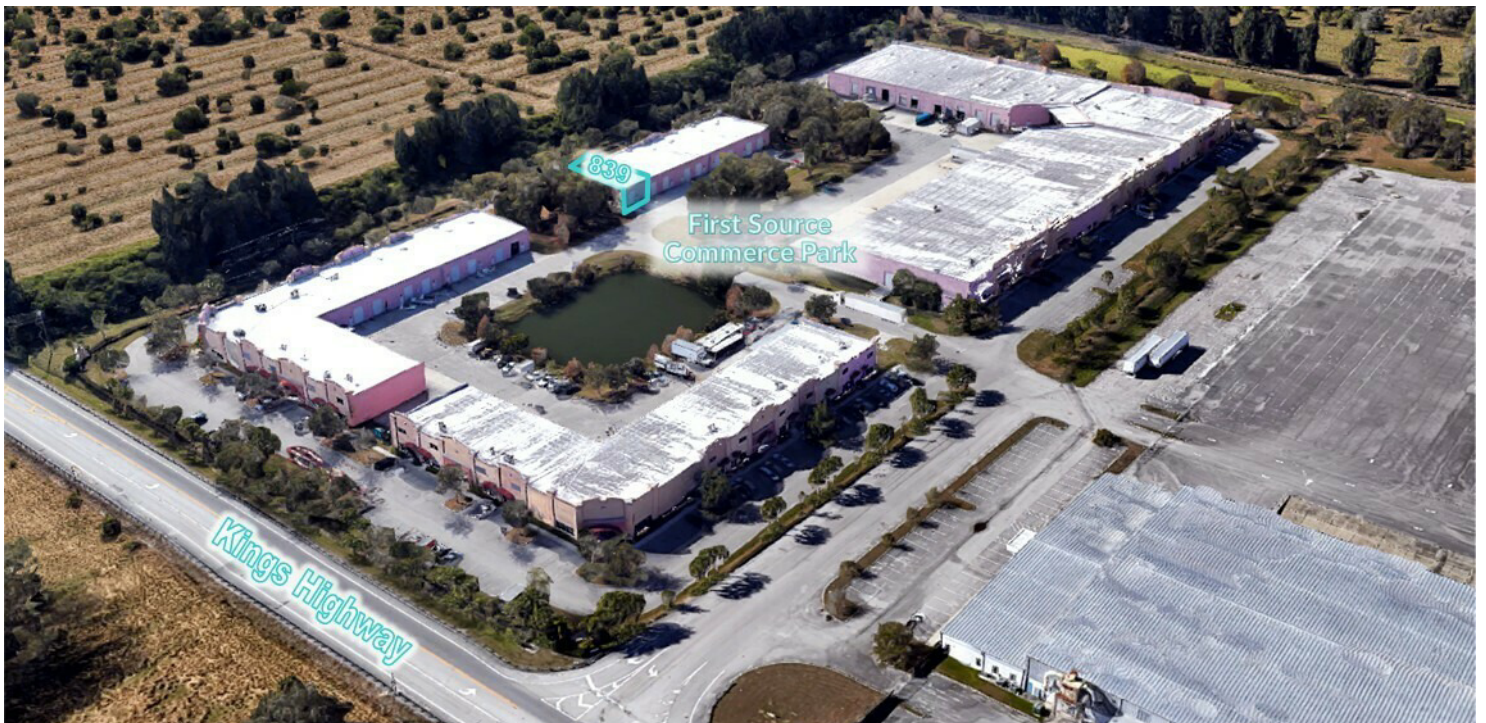
FOR SALE



Aerial Images

839 S KINGS HWY

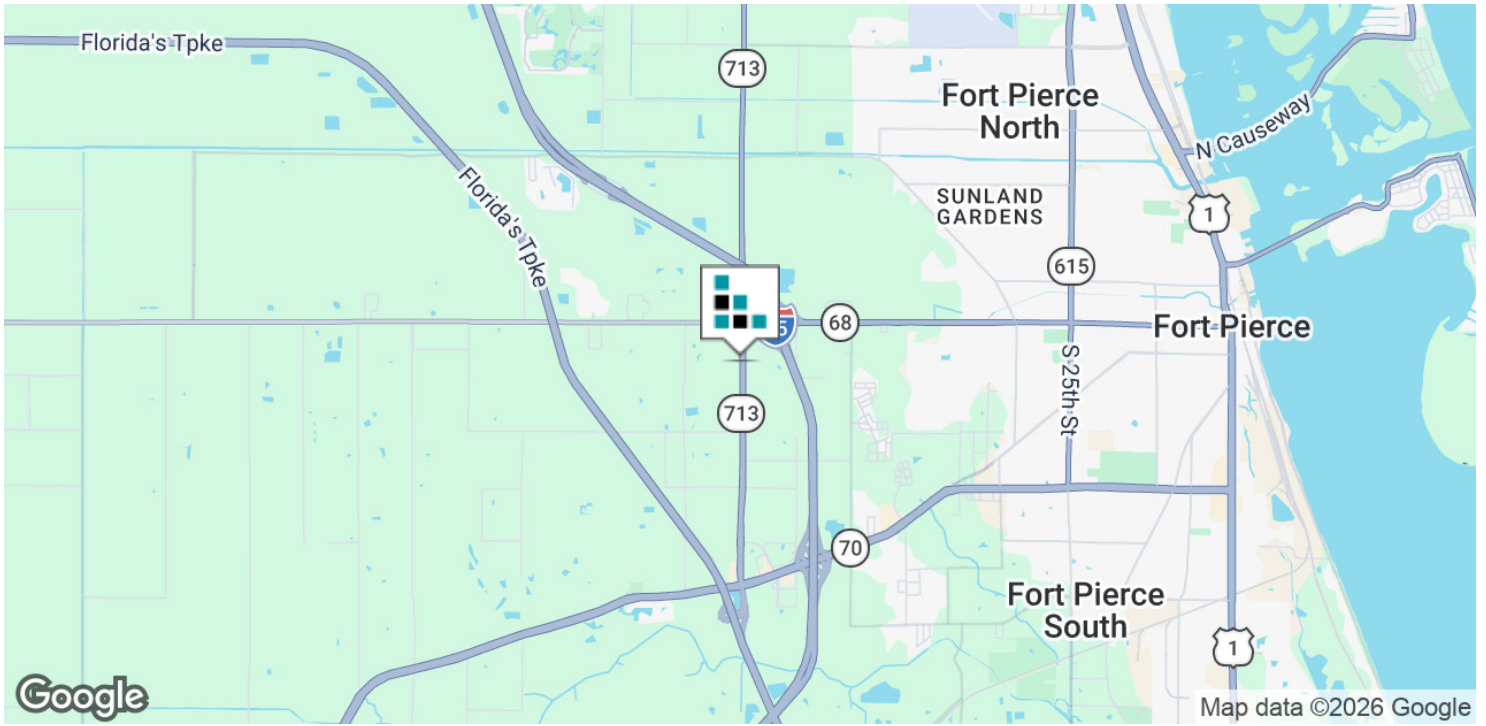
FOR SALE



Location Maps

839 S KINGS HWY

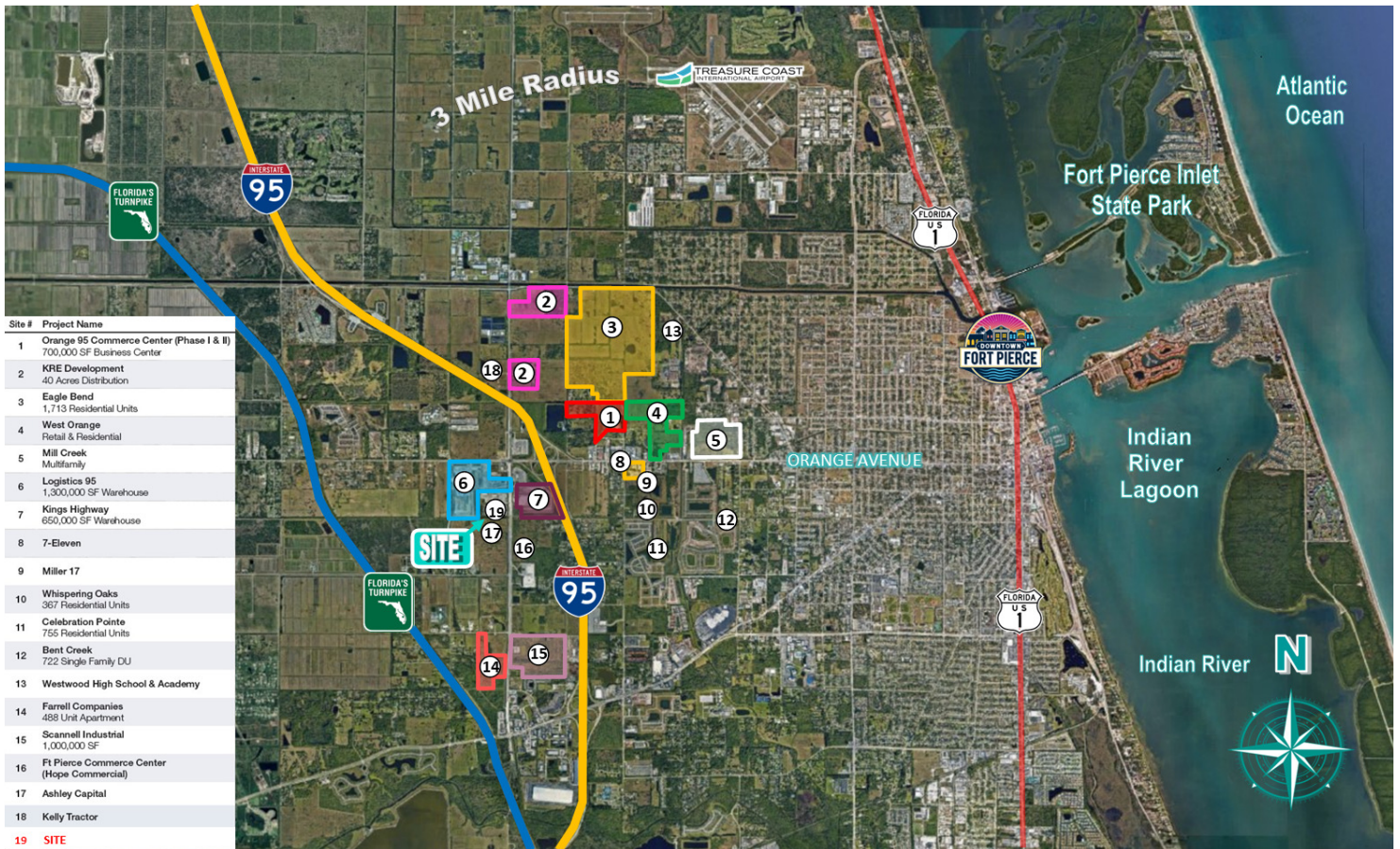
FOR SALE



Key Area Projects

839 S KINGS HWY

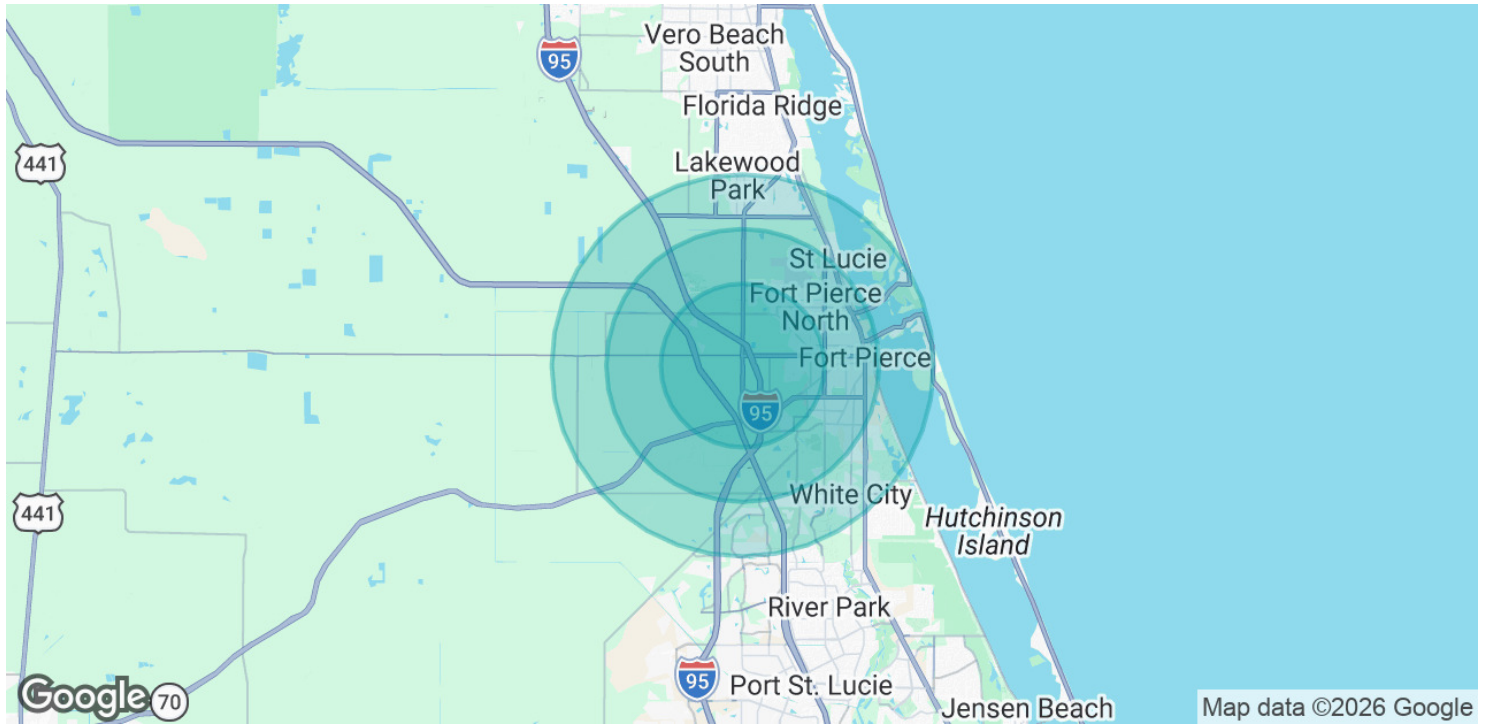
FOR SALE



Demographics Map & Report

839 S KINGS HWY

FOR SALE



POPULATION	3 MILES	5 MILES	7 MILES
Total Population	17,863	55,316	95,937
Average Age	35.6	36.4	41.3
Average Age (Male)	35.4	36.8	41.7
Average Age (Female)	40.6	39.9	43.7
HOUSEHOLDS & INCOME	3 MILES	5 MILES	7 MILES
Total Households	5,541	19,698	35,714
# of Persons per HH	3.2	2.8	2.7
Average HH Income	\$64,011	\$57,558	\$72,456
Average House Value	\$233,776	\$218,750	\$289,844

2023 American Community Survey (ACS)

Disclaimer

839 S KINGS HWY

FOR SALE

This presentation package has been prepared by the company representing the property for informational purposes only and does not purport to contain all information necessary to reach a purchase decision.

The information herein has been given by the Owner or other sources believed to be reliable, but it has not necessarily been independently verified by the Company representing the property and neither its accuracy nor its completeness is guaranteed.

This information is subject to errors, omissions, changes, prior sale or withdrawal without notice by the Company representing the property and does not constitute a recommendation, endorsement or advice as to the value for the purchase of any property. Each prospective lessee or purchaser is to rely upon his/her own investigation, evaluation and judgment as to the advisability of leasing or purchasing the property.

Furthermore, any financial information and calculations presented in this analysis are believed to be accurate, but are not guaranteed and are intended for the purposes of projection and analysis only. The user of this financial information contained herein should consult a tax specialist concerning his/her particular circumstances before making any investment.