

245 JEFFERSON STREET, San Francisco, CA 94133

FOR LEASE - 8,105 SF Prime view restaurant space with 1,628 SF storage available in Fisherman's Wharf



Gary Barboro
415.867.6512
gary.barboro@compass.com
DRE 01125826

David Bell
415.307.8056
david.bell@compass.com
DRE 01862467

COMPASS
COMMERCIAL



Rarely available prime restaurant space in Fisherman's Wharf, San Francisco is now up for lease. Located at 245 Jefferson St, this space offers a breathtaking view of the bay that is sure to enchant your customers.

This 8,105 square foot space on the second floor is perfect for a restaurant looking to make a statement. The space comes equipped with existing restaurant infrastructure. In addition, there is 1,628 square feet of storage available on the ground floor.

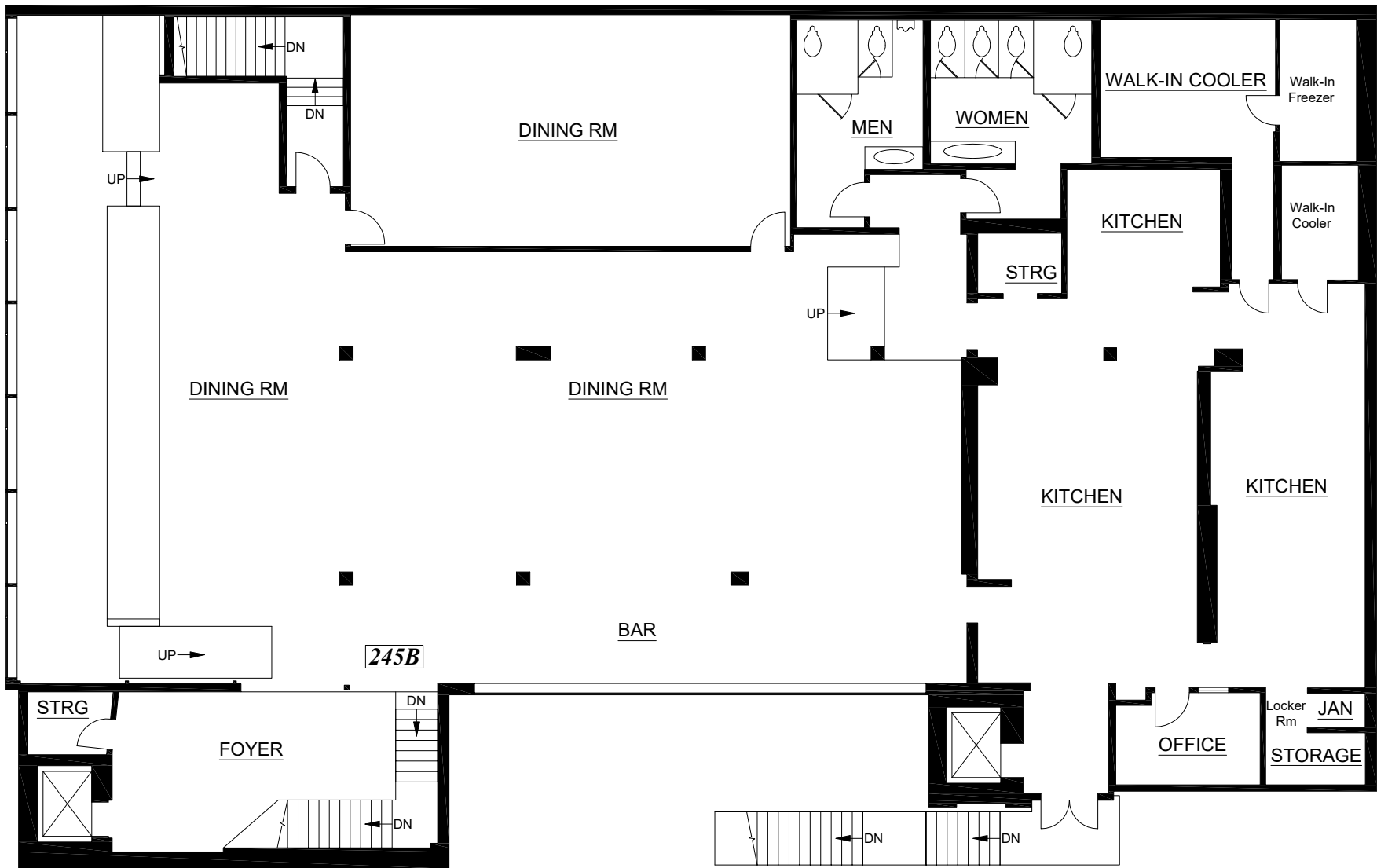
The previous occupants of this space were Supreme Crab and Joe's Crab Shack, both of which enjoyed a thriving business in this location. Now it's your turn to make your mark in this prime restaurant space.

Don't miss out on this unique opportunity to lease a space that is perfect for your restaurant. Contact us to schedule a tour and see the potential of this stunning space for yourself.

According to the San Francisco Travel Association, Fisherman's Wharf is one of the city's most popular tourist destinations, attracting millions of visitors each year.

- 12 Million Visitors per year to Fisherman's Wharf
- \$135 per person mean daily spend at Fisherman's Wharf
- Visitor spending \$6.7 Billion
- Formula retail allowed
- Overlooking the bay with classic water views
- Restaurant infrastructure in place
- Rarely available large-scale restaurant space





Second Floor - 8,105 SF

POINTS OF INTEREST

COMPASS
COMMERCIAL

- | | | | |
|-------------------------|----------------------|--|--|
| 1. 245 Jefferson Street | 5. Scoma's | 9. Starbucks | 12. Trader Joe's |
| 2. Boudin Cafe & Bakery | 6. In-n-Out | 10. NorthPoint Shopping Ctr
(Safeway, Banks, etc) | 13. Pier 39 (Wipeout Bar & Grill,
Chowders, Crepe House,
Boudin, Chart House, etc) |
| 3. Madame Tussauds | 7. Ghiradelli Square | | |
| 4. Franciscan Crab | 8. Gary Danko | 11. Anchorage Square | |

