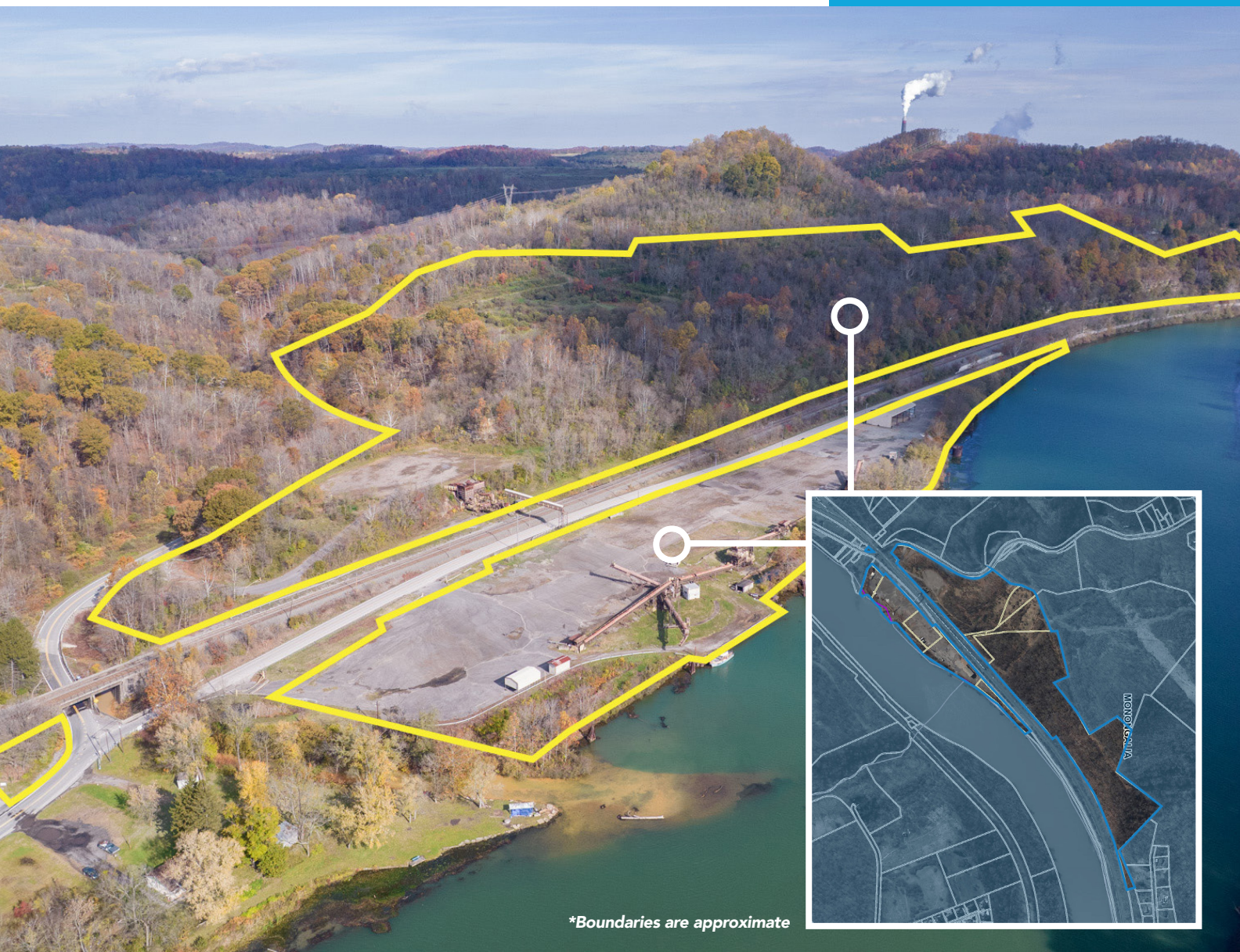




**FOR SALE / LEASE**  
**LAND / DEVELOPMENT**  
**MARKETING FLYER**



**MAIDSVILLE LANDING**  
**MAIDSVILLE, WV 26508**





# MAIDSVILLE LANDING

MYLAN

NATIONAL ENERGY TECHNOLOGY LABORATORY

SUNCREST

HEALTH SCIENCES CAMPUS

MILAN PUSKAR STADIUM

EVANSDALE CAMPUS

UNIVERSITY TOWNE CENTRE

WESTRIDGE

DOWNTOWN MORGANTOWN

GATEWAY

EXIT 155

79



# TABLE OF CONTENTS

---

<b>Property Overview / Specifications</b> Introduction of property and specifications of the land, utilities, access and directions.	<b>02</b>
<b>Location Analysis / Aerial Photo</b> Detailed description and aerial photo of the location and its proximity to surrounding businesses.	<b>04</b>
<b>Demographics / Key Facts</b> Demographics and key facts pertaining to the property within a three, five and ten mile radius.	<b>06</b>
<b>WestRidge Development</b> Information regarding WestRidge Development and other local economic developments.	<b>08</b>
<b>Aerial Photos</b> Aerial photos of the property from various heights and angles.	<b>10</b>



304.413.4350  
BlackDiamondRealty.net

David Lorenze, CCIM, SIOR  
Principal & Associate Broker  
dlorenze@blackdiamondrealty.net  
M. 304.685.3092



\*Boundaries are approximate

## LAND / DEVELOPMENT FOR SALE / LEASE

## MAIDSVILLE LANDING MORGANTOWN, WV 26508

**SALE PRICE / NEGOTIABLE**

**LEASE RATE / NEGOTIABLE**

**LEASE STRUCTURE / NNN INCLUDES PROPERTY  
TAX, INSURANCE, RAILROAD LEASE, DNR FEE**

**LOT SIZE / 59.95 ACRES**

**PROPERTY TYPE / LAND / DEVELOPMENT**

**PROPERTY FEATURES / RIVER ACCESS,  
RAIL ACCESS, MULTIPLE PARCELS,  
CLOSE TO MANY AMENITIES,  
FLEXIBLE ZONING**

### Location & Accessibility

- Situated along Fort Martin Road and Lazzelle Union Road in northern Monongalia County
- Offers convenient access to major transportation routes and nearby industrial centers

### River & Rail Access

- Positioned along the Monongahela River with potential for ~180' of barge access and up to 2,200' available Mooring for barges
- Loading capability on Norfolk Southern Railway
- Ideal for logistics, shipping, and industrial users requiring waterway connectivity

### Land Composition

- Comprised of 10 contiguous parcels totaling approximately 59.95 (+/-) acres
- Expansive layout provides flexibility for a variety of development configurations

### Development Potential

- Flexible zoning and generous acreage accommodate industrial, commercial, or energy-related projects
- Ample space available for infrastructure, storage, and future expansion



**FOR SALE / LEASE**  
**LAND / DEVELOPMENT - LOCATED 4.3 FROM I-79, EXIT 155**  
**MAIDSVILLE LANDING · MORGANTOWN, WV 26508 · 59.95 ACRES**

# PROPERTY SPECIFICATIONS

## PROPERTY SPECIFICATIONS

- Parcels: 10
- Lot Size: 59.95 (+/-) acres
- Topography: Portions of the property feature flat, open land suitable for immediate development or staging. Remaining acreage consists of rolling terrain with moderate elevation changes, offering opportunities for grading and site design. Tree coverage is present on higher elevations, providing natural buffers and screening potential.
- River Access: Direct adjacency to the Monongahela River with potential for barge operations
- Rail Access: Loading capability on Norfolk Southern Railway

## LEGAL DESCRIPTION / ZONING / PARCEL MAP

- Located outside the city limits of Morgantown
- Parcels: 33.0, 34.1, 13.0, 14.2, 32.0, 34.0, 41.0, 14.1, 31.0, and 42.0
- Tax Map: 13 & 13A, Cass District, Monongalia County
- Deed Reference: Deed Book 1471, Page 641
- Zoning: Mixed Commercial and Residential

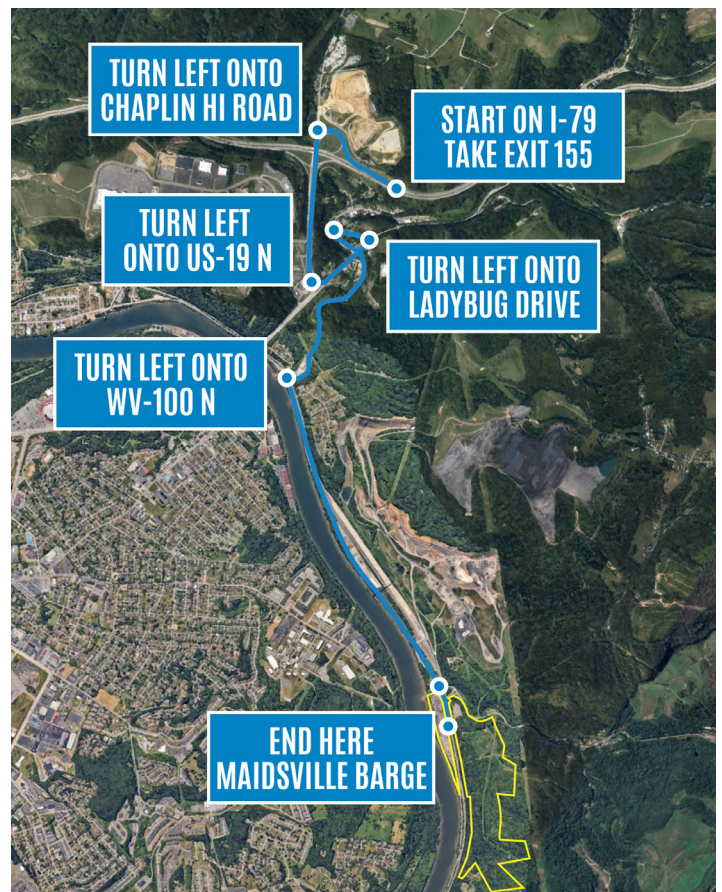
## INGRESS / EGRESS / PARKING / DIRECTIONS

- Head south on I-79
- Take Exit 155
- Turn left onto Chaplin Hill Road
- Turn left onto US-19 N
- Take Scotts Run Road and WV-100 N toward Fort Martin Road
- Turn left onto Ladybug Drive
- Turn left onto Scotts Run Road
- Turn left onto WV-100 N
- Turn right onto Fort Martin Road
- Destination will be on both the right and left sides

## UTILITIES

This site offers the following:

UTILITY	PROVIDER
Electric	Mon Power
Natural Gas	No Current Gas Line (Hope Gas Nearby)
Water	Pleasant Valley Water System
Sewer	No Public Sewer / Previously Private Sewage





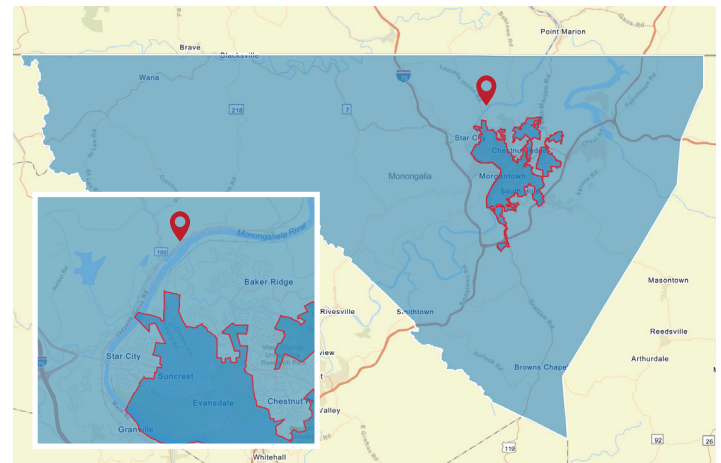
# LOCATION ANALYSIS

Monongalia County is located in north-central West Virginia, with Morgantown serving as the county seat and home to West Virginia University. The Morgantown MSA consistently ranks on numerous lists recognizing the region's achievements in growth, business development, and workforce cultivation. Morgantown's prominence in the recession-resistant sectors of higher education and health care contributes to the area's long-term economic stability. According to the WVU Bureau of Business and Economic Research, the region is projected to experience "continued healthy growth" well into the future.

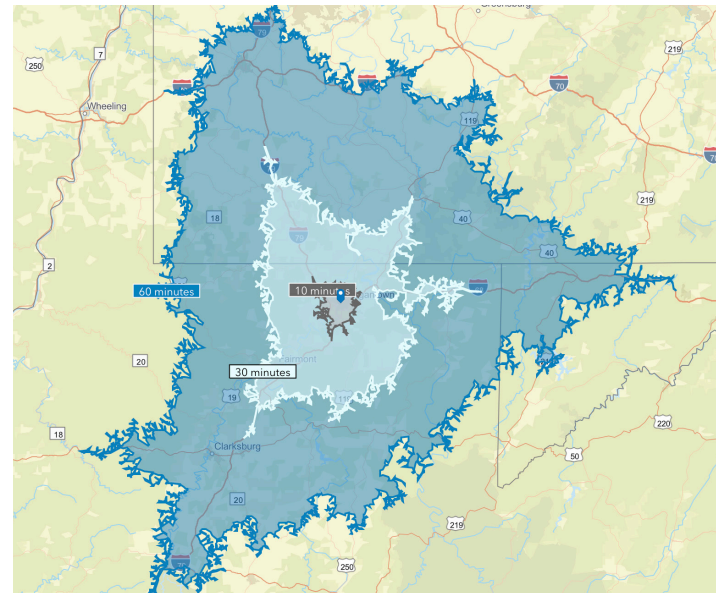
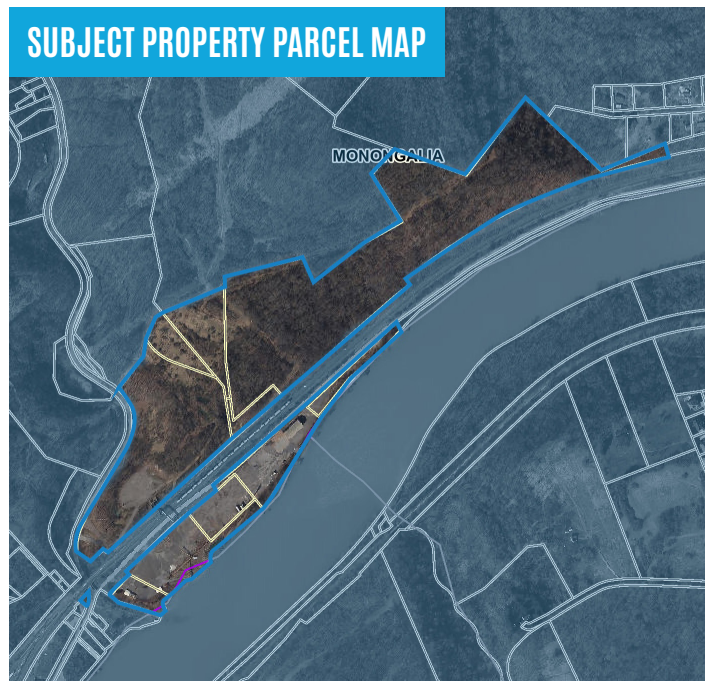
**Monongalia County** has a total population of 106,376 with a median household income of \$56,213 and 3,875 total businesses.

The **City of Morgantown**, located within the county, has a total population of 29,856, a median household income of \$43,620, and 1,441 total businesses.

*Data/map provided by Esri, Esri and Bureau of Labor Statistics, Esri and Data Axle, 2025.*



■ Monongalia County, WV ■ Morgantown City Limits 📍 Subject Location



**Distance to nearby cities:** Fairmont, WV - 24 miles, Bridgeport, WV - 38 miles, Washington, PA - 46 miles, Wheeling, WV - 77 miles, Pittsburgh, PA - 74 miles, Charleston, WV - 160 miles.



# FOR SALE / LEASE

## LAND / DEVELOPMENT - LOCATED 4.3 FROM I-79, EXIT 155

### MAIDSVILLE LANDING · MORGANTOWN, WV 26508 · 59.95 ACRES

## AERIAL PHOTO



The aerial above highlights several of the most popular surrounding retail, restaurants, businesses and hotels. The subject property, Maidsville Landing, has been referenced with a yellow star.

- 1 Hobby Lobby
- 2 Burger King, BFS Foods
- 3 Mon Health Wedgewood
- 4 I-79 Honda
- 5 Sportsmans Emporium
- 6 PARCS Superstore
- 7 La Quinta Inn & Suites
- 8 Candlewood Suites
- 9 Triple S Harley Davidson
- 10 National Road Utility Supply
- 11 Sheetz
- 12 McDonalds, Starbucks, Chipotle
- 13 Ridge Runner Pipeline Services
- 14 Chili's, Longhorn Steakhouse
- 15 Olive Garden, Red Lobster
- 16 Fairfield Inn & Suites
- 17 Barns & Noble
- 18 BestBuy
- 19 Giant Eagle
- 20 Dick's Sporting Goods, AC Moore, Ulta Beauty, Ashley Homestore, Kirkland's
- 21 Target, Bed Bath & Beyond, T.J. Maxx, Dollar Tree, Old Navy, Petco, Game Stop, The Shoe Dept.
- 22 Sams Club
- 23 Walmart Supercenter
- 24 Westridge Development
- 25 Regal Cinemas
- 26 Domain Apartments
- 27 Star City
- 28 Sncrest
- 29 WVU Coliseum
- 30 WVU Evansdale Campus
- 31 Milan Puskar Stadium
- 32 WVU Main Campus



# DEMOGRAPHICS / KEY FACTS

## 3 MILE RADIUS



**32,731**

Total  
Population



**1,360**

Businesses



**50,782**

Daytime  
Population



**\$300,294**

Median Home  
Value



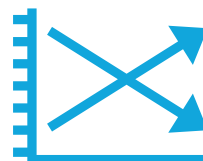
**\$38,298**

Per Capita  
Income



**\$52,819**

Median Household  
Income



**0.3%**

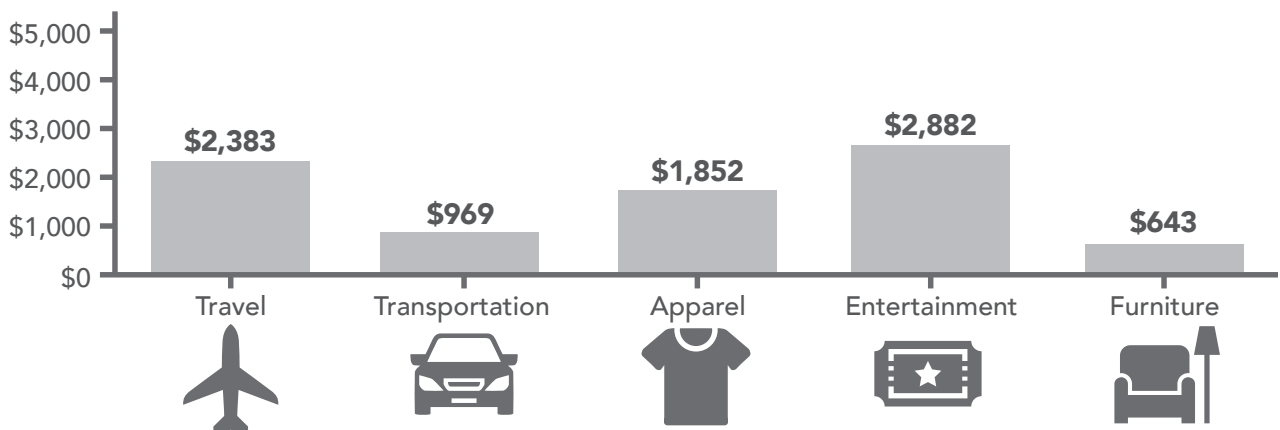
2025-2030  
Pop Growth Rate



**16,568**

Housing Units  
(2020)

### KEY SPENDING FACTS





These infographics contain data provided by Esri, Esri and Bureau of Labor Statistics Esri and Data Axle.  
The vintage of the data is 2025, 2030. Spending facts are average annual dollar per household.

## 5 MILE RADIUS



**65,161**

Total  
Population



**3,003**

Businesses



**84,503**

Daytime  
Population



**\$265,876**

Median Home  
Value



**\$36,193**

Per Capita  
Income



**\$53,562**

Median  
Household  
Income



**0.3%**

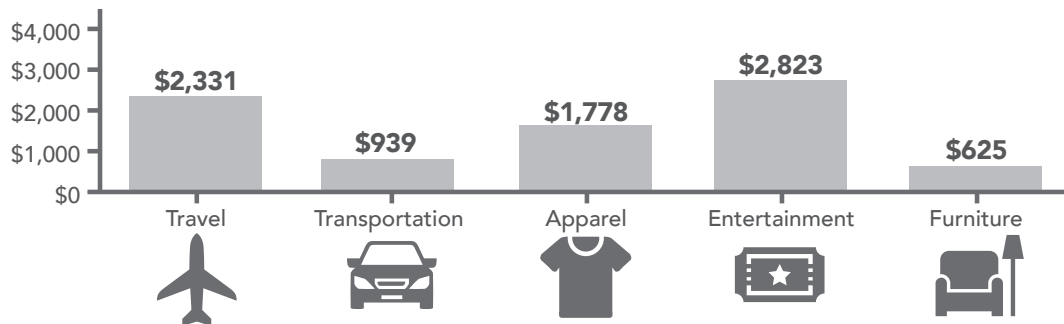
2025-2030  
Pop Growth  
Rate



**32,644**

Housing Units  
(2020)

### KEY SPENDING FACTS



## 10 MILE RADIUS



**105,672**

Total  
Population



**3,928**

Businesses



**116,612**

Daytime  
Population



**\$275,769**

Median Home  
Value



**\$41,123**

Per Capita  
Income



**\$63,322**

Median  
Household  
Income



**0.4%**

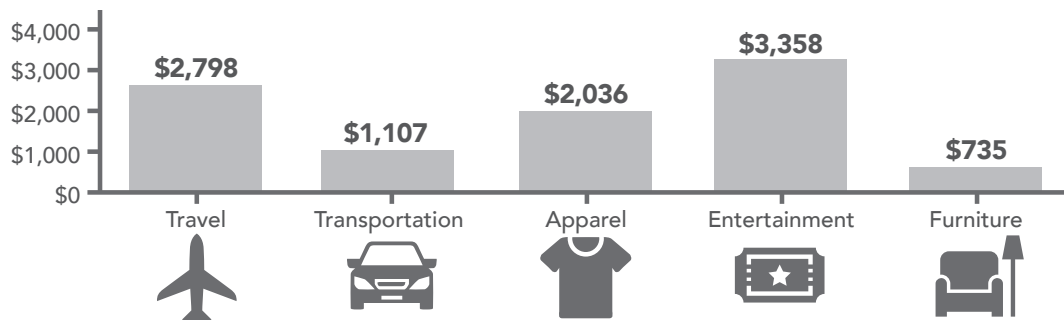
2025-2030  
Pop Growth  
Rate



**50,092**

Housing Units  
(2020)

### KEY SPENDING FACTS



# WESTRIDGE DEVELOPMENT

## ECONOMIC DEVELOPMENT STATISTICS

*Statistics are within one-mile radius of the subject location.*

- **MYLAN PARK:** Mylan Park recently finished a **\$40M indoor aquatic center and outdoor track**. Mylan Park offers nearly **400 acres** with over **1,000,000 visitors a year** prior to the track, aquatic center, Monongalia County building, WVU Rehab Center and assisted living center, alternative learning center. Pro Performance, a large indoor recreational facility, plus several softball fields comprise Mylan Park.

A 120 unit nursing home facility will soon break ground at Mylan Park. The developer closed on the 5-6 acres as of June 15, 2020.

- **GATEWAY:** The Gateway is fast approaching a total of **\$60 Million of commercial development**. Immediately adjacent to Gateway Development, Phase 1 (61 acres) of a townhouse development is under construction at Sugar Maple Ridge along Solomon Road. Phase I will consist of 220 townhouses.

via three interstate exits, one of which was specifically built as an “interstate front door” to WestRidge.

WestRidge Corporate Park (**red**) will include over 500,000 square feet of corporate office space, with the first two pads already completed at 90,000 square feet.

The main retail component, WestRidge Commons (**light blue**) will be located four miles from West Virginia University and is projected to include approximately 400,000 square feet of retail and restaurants. Combined with University Town Centre, Exit 154, the area will offer over 1.3 million square feet of retail, classifying it as a “Super Regional Center” and drawing from a trade area of 25 miles or more.

Menards, the nation’s third-largest home improvement chain, has broken ground on a 173,000-square-foot facility slated to open in Spring 2021. WestRidge Commerce Center features a 100,000-square-foot FedEx Ground distribution center plus more than 100,000 square feet of flex industrial space to be built by the developer. Additionally, 40 acres of large pad sites are available for distribution, manufacturing, or light industrial uses, including Pad 2E (16 acres) and Pad 2F (24 acres).

WestRidge Commerce Center (**dark blue**) features a 100,000 square foot FedEx Ground distribution center plus more than 100,000 square feet of flex industrial space to be built by the developer. A total of 40 acres in large pad sites is also available for large-scale distribution, manufacturing and light industrial uses, including Pad 2E (16 acres) and 2F (24 acres).

## WESTRIDGE DEVELOPMENT

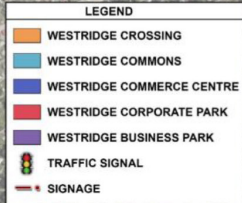


The new WestRidge Business and Retail Park, located just one mile from the subject location, encompasses over 1,000 acres of master-planned mixed-use development. Situated between

University Town Centre (Exit 155) and Morgantown Mall (Exit 152), WestRidge is ideally positioned at Exit 154 to capture retail synergy from these major developments.

Transportation infrastructure includes direct access to I-79



**MAIDSVILLE LANDING · MORGANTOWN, WV 26508 · 59.95 ACRES**



# AERIAL PHOTOS





**FOR SALE / LEASE**  
**LAND / DEVELOPMENT - LOCATED 4.3 FROM I-79, EXIT 155**  
**MAIDSVILLE LANDING · MORGANTOWN, WV 26508 · 59.95 ACRES**



Aerial Facing East.

*\*Boundaries are approximate*



# AERIAL PHOTOS



Aerial Facing Southwest.



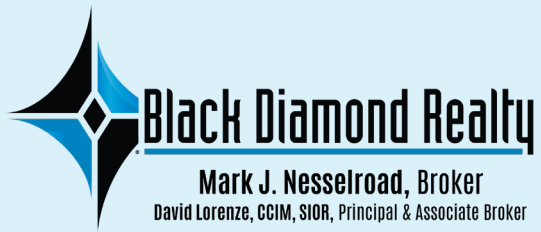
**FOR SALE / LEASE**  
**LAND / DEVELOPMENT - LOCATED 4.3 FROM I-79, EXIT 155**  
**MAIDSVILLE LANDING · MORGANTOWN, WV 26508 · 59.95 ACRES**



Aerial Facing West.



Aerial Facing South.



# CONTACT

## BLACK DIAMOND REALTY

1399 Stewartstown Road, Suite 150  
Morgantown, WV 26505

**P.** 304.413.4350 | **F.** 304.599.3285

[BlackDiamondRealty.net](http://BlackDiamondRealty.net)

### PRIMARY CONTACT

**David Lorenze, CCIM, SIOR**

*Principal & Associate Broker*

**M.** 304.685.3092

[dlorenze@blackdiamondrealty.net](mailto:dlorenze@blackdiamondrealty.net)