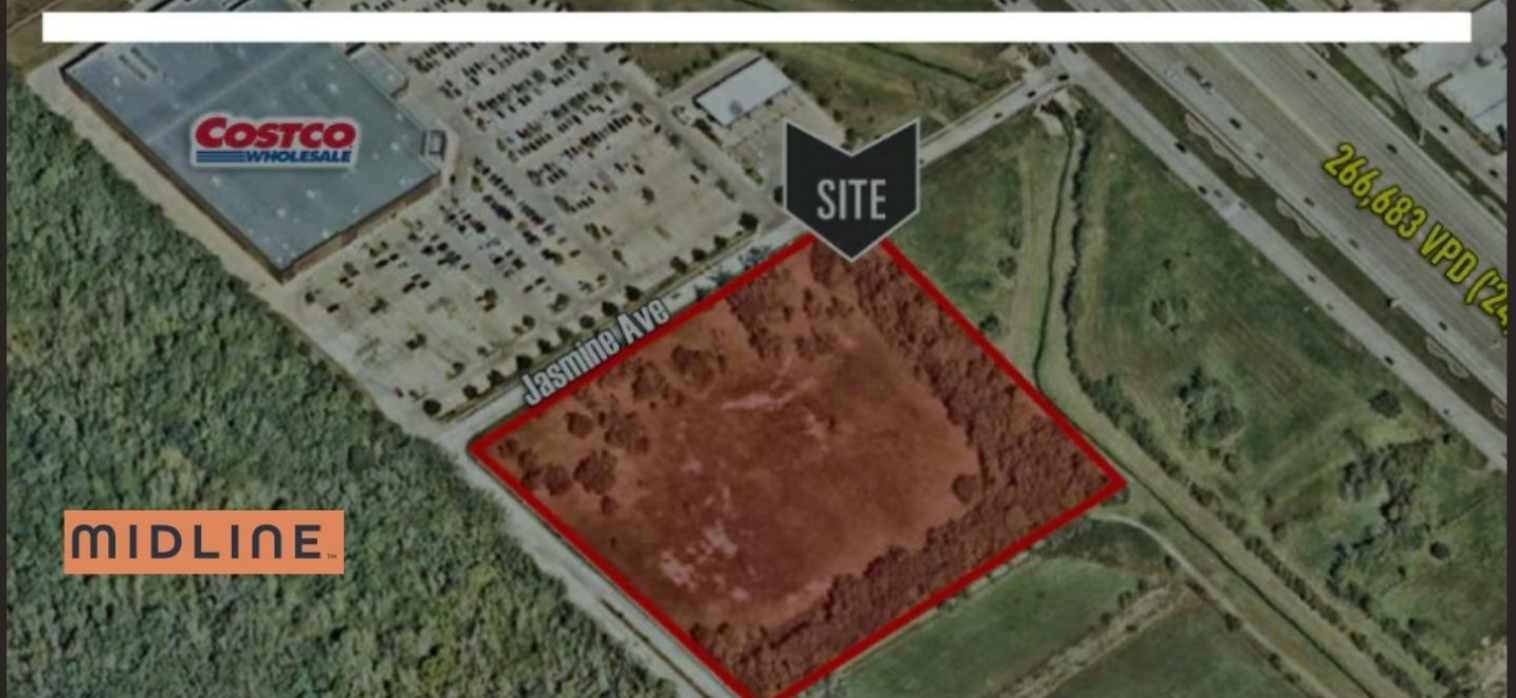


# I-45 & JASMINE RD WEBSTER, TEXAS



## Prime 9.545-Acre Commercial Corner Lot

- Directly Across from Costco , just off I45
- Jasmine Ave extends directly into Midline community  
1,066 acres, ~2,800 new single-family homes (starting Spring 2026)
- Nearby Hotspots: Baybrook Mall , NASA/Space Center Houston, Clear Lake, Kemah Boardwalk, Galveston Bay
- Explosive Growth + Established Anchors
- Ideal retail/office/mixed-use development

**Listed at \$12,500,000**