

1270 PACIFIC DRIVE  
AUBURN HILLS, MICHIGAN

HI-TECH FOR SUBLEASE  
44,700 Square Feet Available

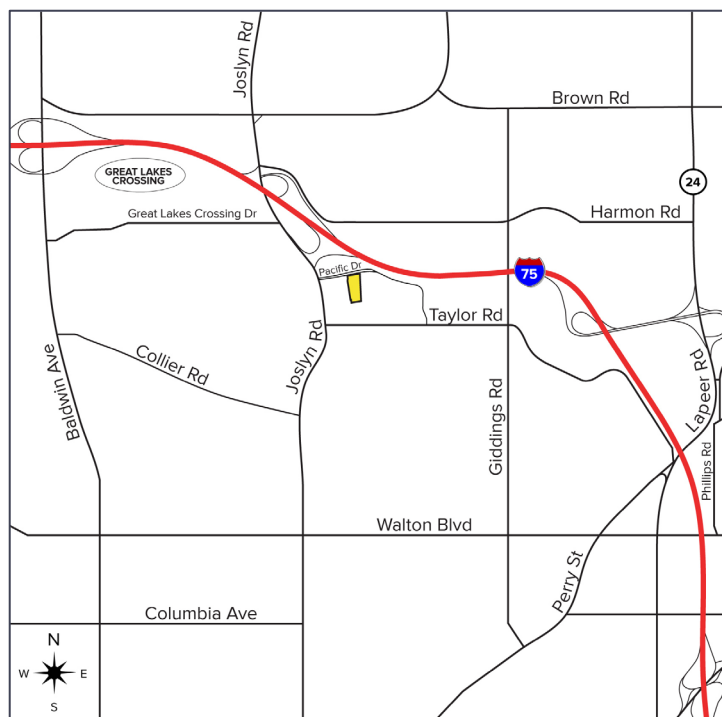


**SIGNATURE  
ASSOCIATES**  
KNOW SIGNATURE | KNOW RESULTS



## PROPERTY FEATURES

- 44,700 square feet available
- 16,000 - 27,300 square feet office
- Expandable up to 75,000 square feet
- 20' clear height
- (3) 12' x 14', 10' x 10' grade level door, (2) truckwells
- Zoned Light Industrial - excellent R&D/lab/engineering or manufacturing facility
- Heavy parking - 190 parking spaces, 246 additional spaces possible
- Built in 2013 on 4.84 acres
- 100% air conditioned
- 1200 amps, 480 volts, heavy, primary power
- Sublease thru July 31, 2029
- Lease Rate: \$9.95/sq. ft. NNN



For more information, please contact:

**GARY STEPHENS**  
(248) 948 0104  
gstephens@signatureassociates.com

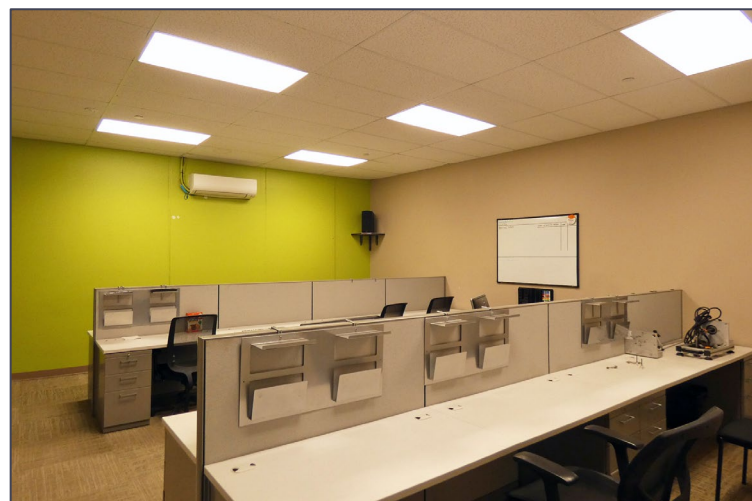
**SIGNATURE ASSOCIATES**  
One Towne Square, Suite 1200  
Southfield, MI 48076  
www.signatureassociates.com

# 1270 Pacific Drive – Auburn Hills, Michigan

## Hi-Tech For Sublease

44,700  
Square Feet  
AVAILABLE

### Interior Photos



For more information, please contact:

**GARY STEPHENS**  
(248) 948 0104  
[gstephens@signatureassociates.com](mailto:gstephens@signatureassociates.com)

**SIGNATURE ASSOCIATES**  
One Towne Square, Suite 1200  
Southfield, MI 48076  
[www.signatureassociates.com](http://www.signatureassociates.com)

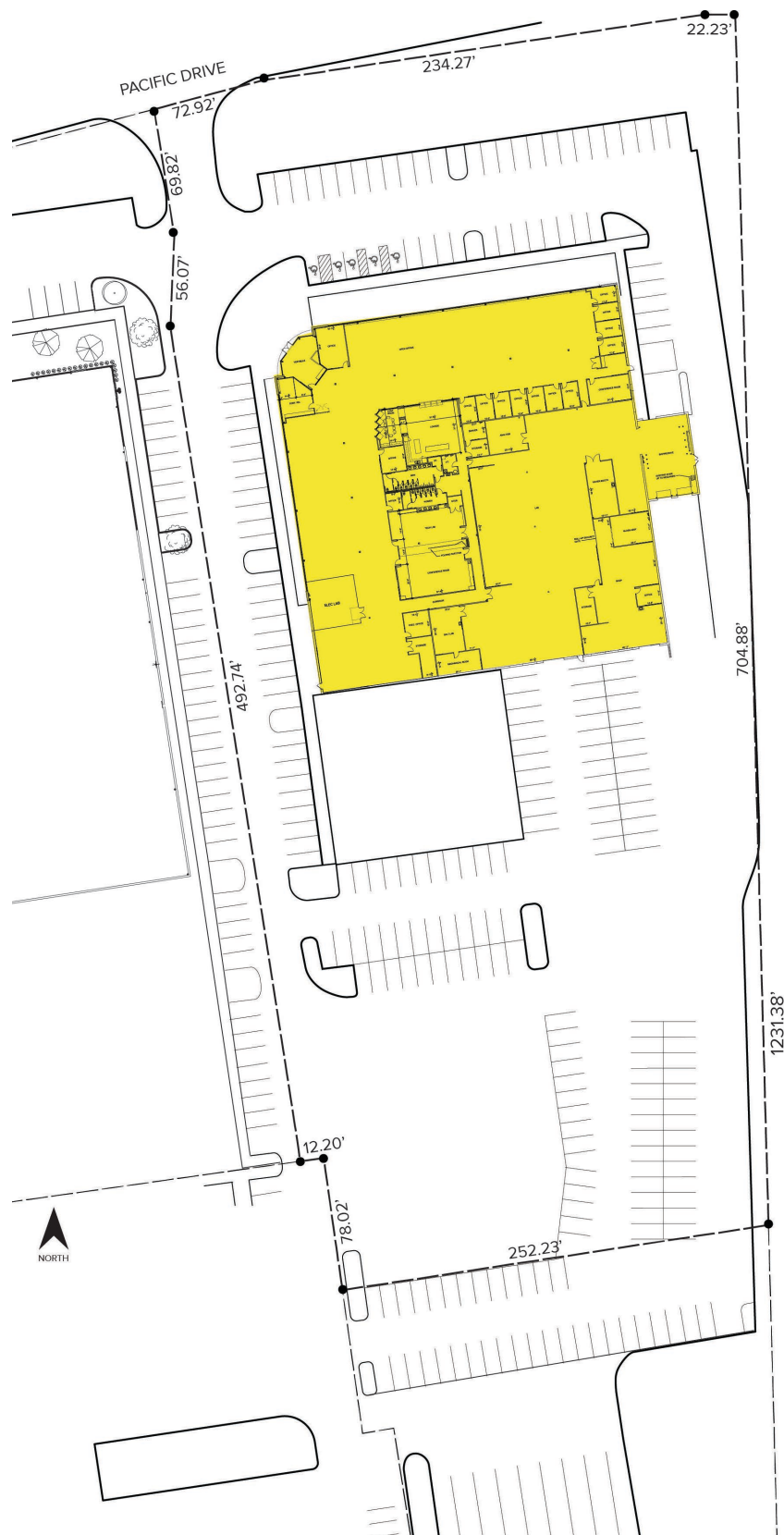
Information is subject to verification and no liability for errors or omissions is assumed. Price is subject to change and listing withdrawal.

# 1270 Pacific Drive – Auburn Hills, Michigan

## Hi-Tech For Sublease

44,700  
Square Feet  
AVAILABLE

### Site Plan



For more information, please contact:

**GARY STEPHENS**  
(248) 948 0104  
gstephens@signatureassociates.com

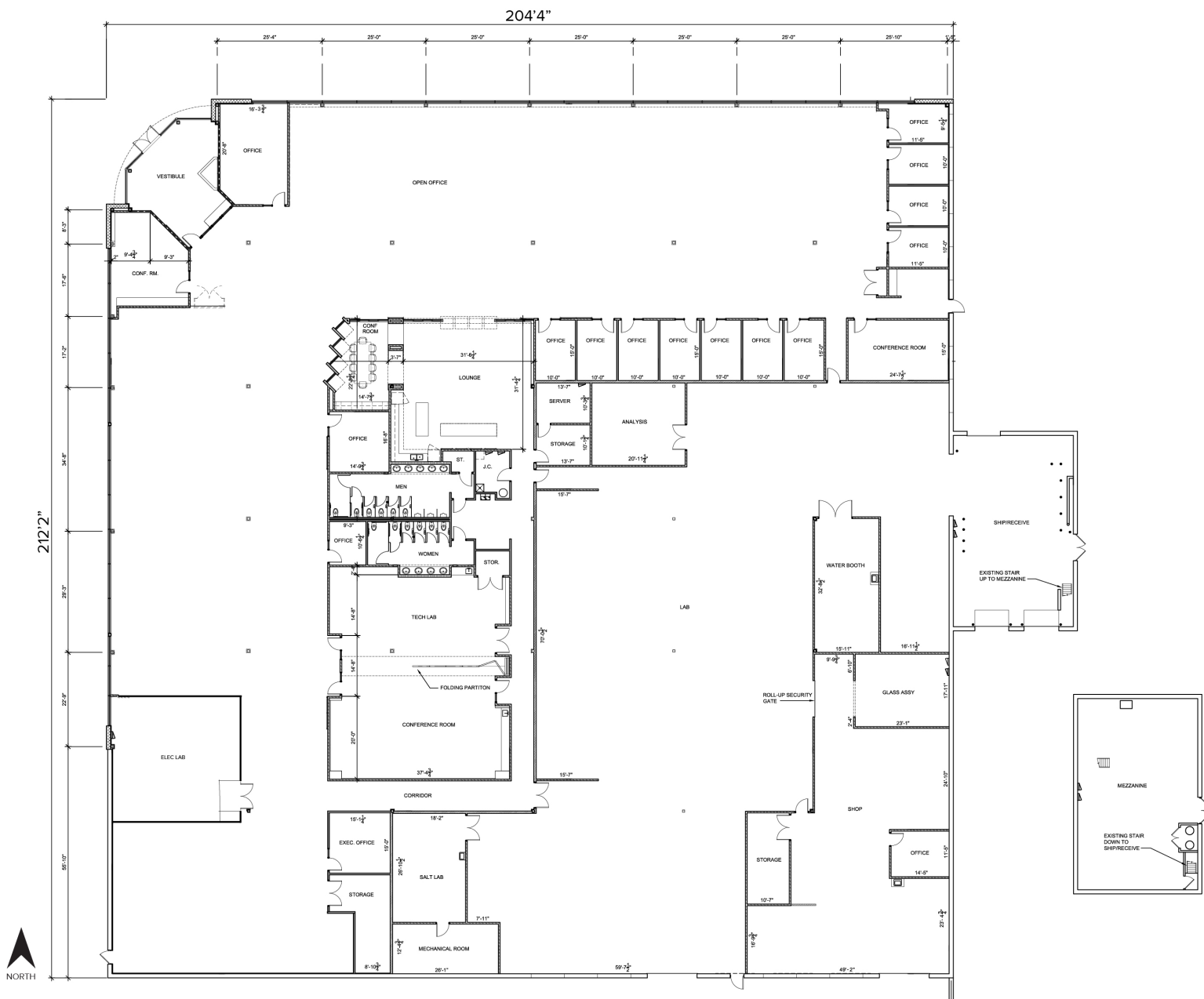
**SIGNATURE ASSOCIATES**  
One Towne Square, Suite 1200  
Southfield, MI 48076  
www.signatureassociates.com

# 1270 Pacific Drive – Auburn Hills, Michigan

## Hi-Tech For Sublease

44,700  
Square Feet  
AVAILABLE

### Floor Plan



For more information, please contact:

**GARY STEPHENS**  
(248) 948 0104  
gstephens@signatureassociates.com

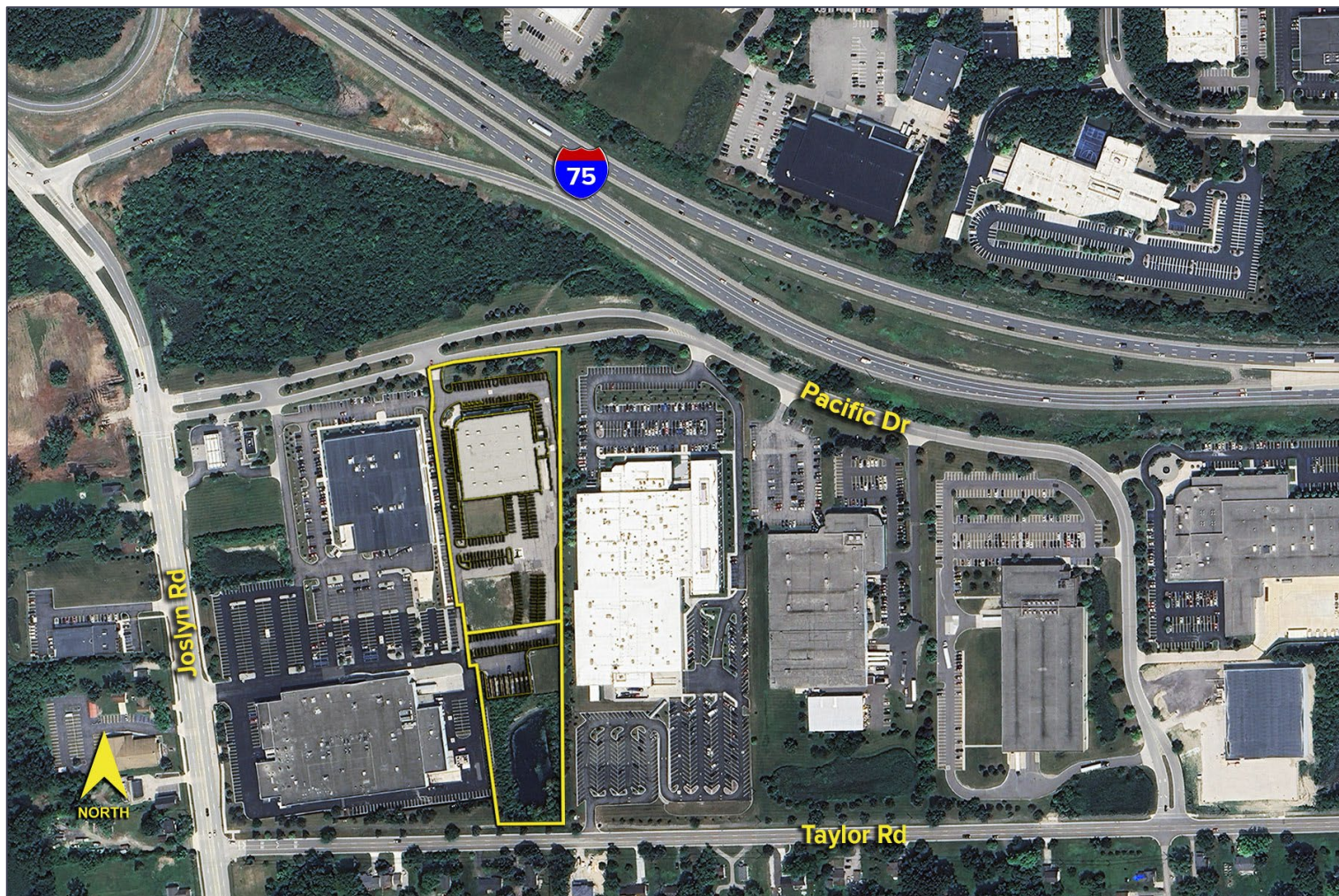
**SIGNATURE ASSOCIATES**  
One Towne Square, Suite 1200  
Southfield, MI 48076  
www.signatureassociates.com

# 1270 Pacific Drive – Auburn Hills, Michigan

## Hi-Tech For Sublease

44,700  
Square Feet  
AVAILABLE

Aerial



For more information, please contact:

**GARY STEPHENS**  
(248) 948 0104  
[gstephens@signatureassociates.com](mailto:gstephens@signatureassociates.com)

**SIGNATURE ASSOCIATES**  
One Towne Square, Suite 1200  
Southfield, MI 48076  
[www.signatureassociates.com](http://www.signatureassociates.com)

Information is subject to verification and no liability for errors or omissions is assumed. Price is subject to change and listing withdrawal.