



**FOR LEASE**

# Park Fletcher Building 17

1810 South Lynhurst Drive  
Indianapolis, IN 46241



## **PROPERTY HIGHLIGHTS**

- Clean flex space available
- Easy interstate access to I-70 and I-465
- Numerous amenities nearby
- Ample parking for employees and guests
- 7 miles from Indianapolis International Airport

[www.Halakar.com](http://www.Halakar.com)

Liz DeKoninck | 765.516.4709 | [liz@halakar.com](mailto:liz@halakar.com)  
Colton Snodgrass, CCIM | 317.536.0218 | [csnodgrass@halakar.com](mailto:csnodgrass@halakar.com)  
Joshua D. Abrams, CCIM | 317.324.1613 | [Joshua@halakar.com](mailto:Joshua@halakar.com)

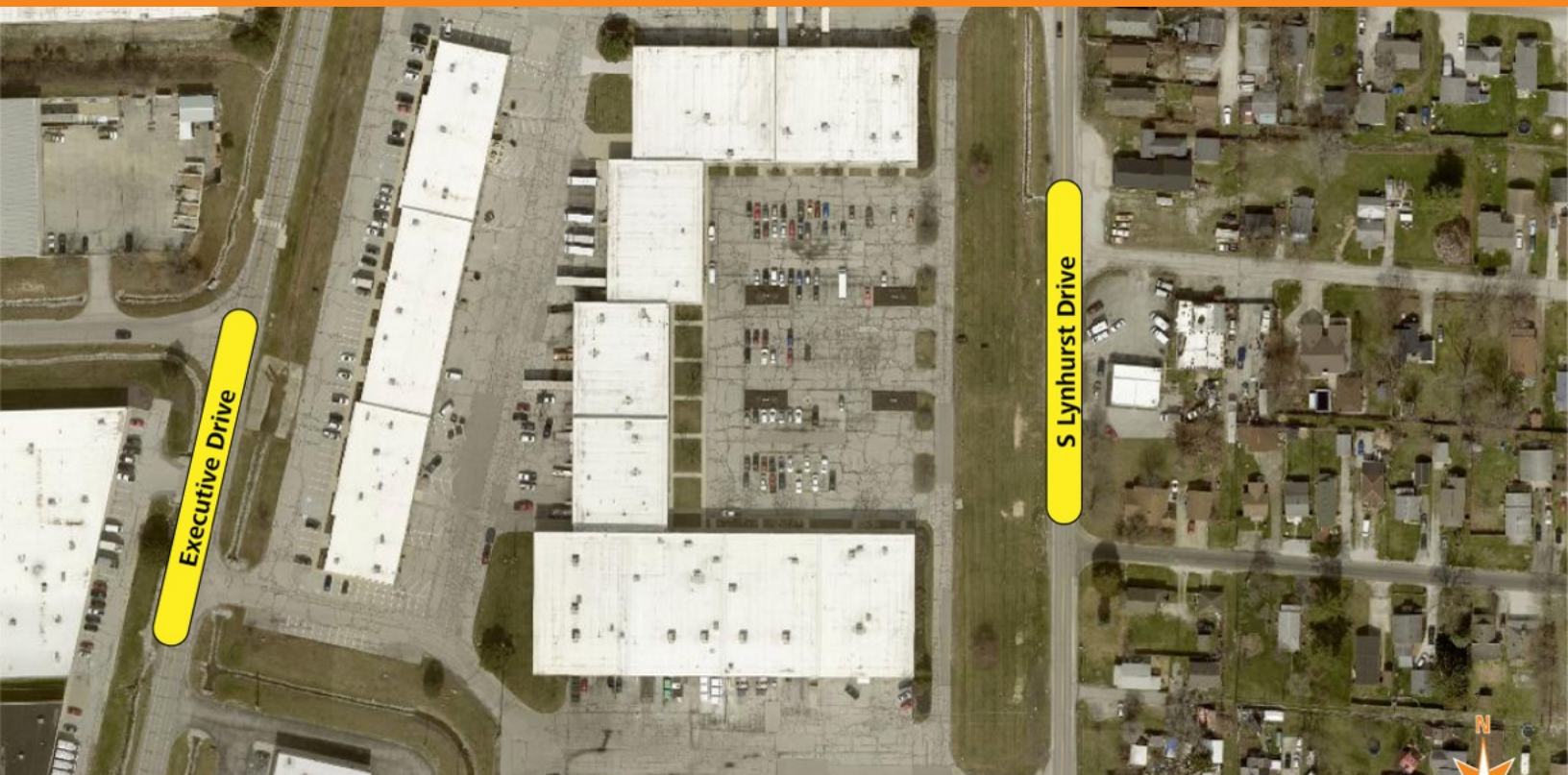


# Park Fletcher Building 17

1810 South Lynhurst Drive Indianapolis, IN 46241

# FOR LEASE

CLEAN FLEX SPACE AVAILABLE

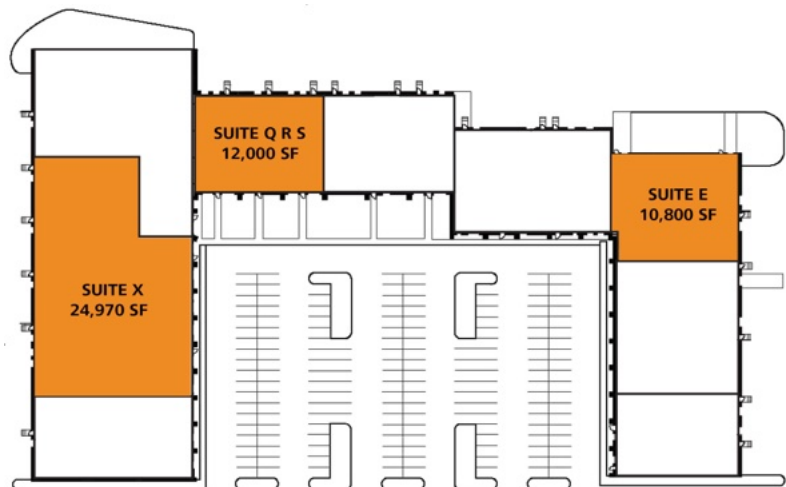


## OFFERING SUMMARY

Lease Rate:	Call for rates
Lease Type:	NNN
Building Size:	135,000 SF
Available SF:	10,800 - 24,970 SF
Zoning:	I3
2026 OPEX:	\$2.84
Clear Height:	18' - 22'
Market:	Park Fletcher

## PROPERTY OVERVIEW

Flex spaces in this location at Park Fletcher are appropriate for a variety of businesses. The suites have built out office space along with docks and drive in doors to fit your needs. Call today for more information and to schedule a private tour!



Liz DeKoninck | 765.516.4709 | [liz@halakar.com](mailto:liz@halakar.com)

Colton Snodgrass, CCIM | 317.536.0218 | [csnodgrass@halakar.com](mailto:csnodgrass@halakar.com)

Joshua D. Abrams, CCIM | 317.324.1613 | [Joshua@halakar.com](mailto:Joshua@halakar.com)



[www.Halakar.com](http://www.Halakar.com)



**Indianapolis:**  
Centrally located with  
award-winning infrastructure  
for maximum logistical  
benefit

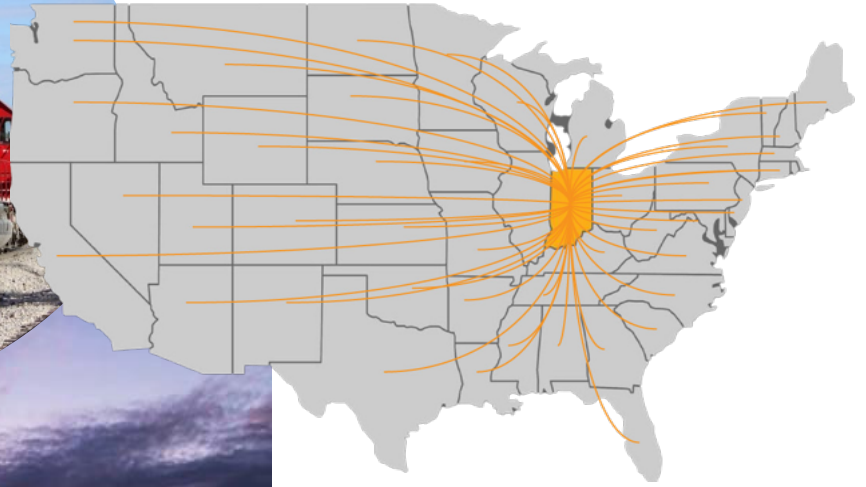


World's 2nd largest Fed Ex Air Hub

Indiana is 1st in rail  
tons of primary metals



Indiana is 1st in Shortest Distance to the  
Median Center of the Entire US Population



Indianapolis International Airport voted Best Airport  
in North America 12 years in a row



Indiana ranks 1st in truck trailer production  
and pass-through highways with four major  
intersecting interstates

### **Indianapolis and the State of Indiana**

- One of the largest export states in the nation
- 1st for cost of doing business in area development
- 2nd for best state to start a business
- \$650 billion in goods moves through Indiana annually
- With rail lines throughout America's steel belt and agricultural heartland, Indiana ranks highly in freight and class I railroads
- Indiana's Burns Harbor, Jeffersonville, and Mount Vernon ports provide access to Lake Michigan, the Ohio River, the Atlantic Ocean, and the Gulf of Mexico, as well as international access to Europe, the Middle East, Asia and South America



# Park Fletcher Building 17

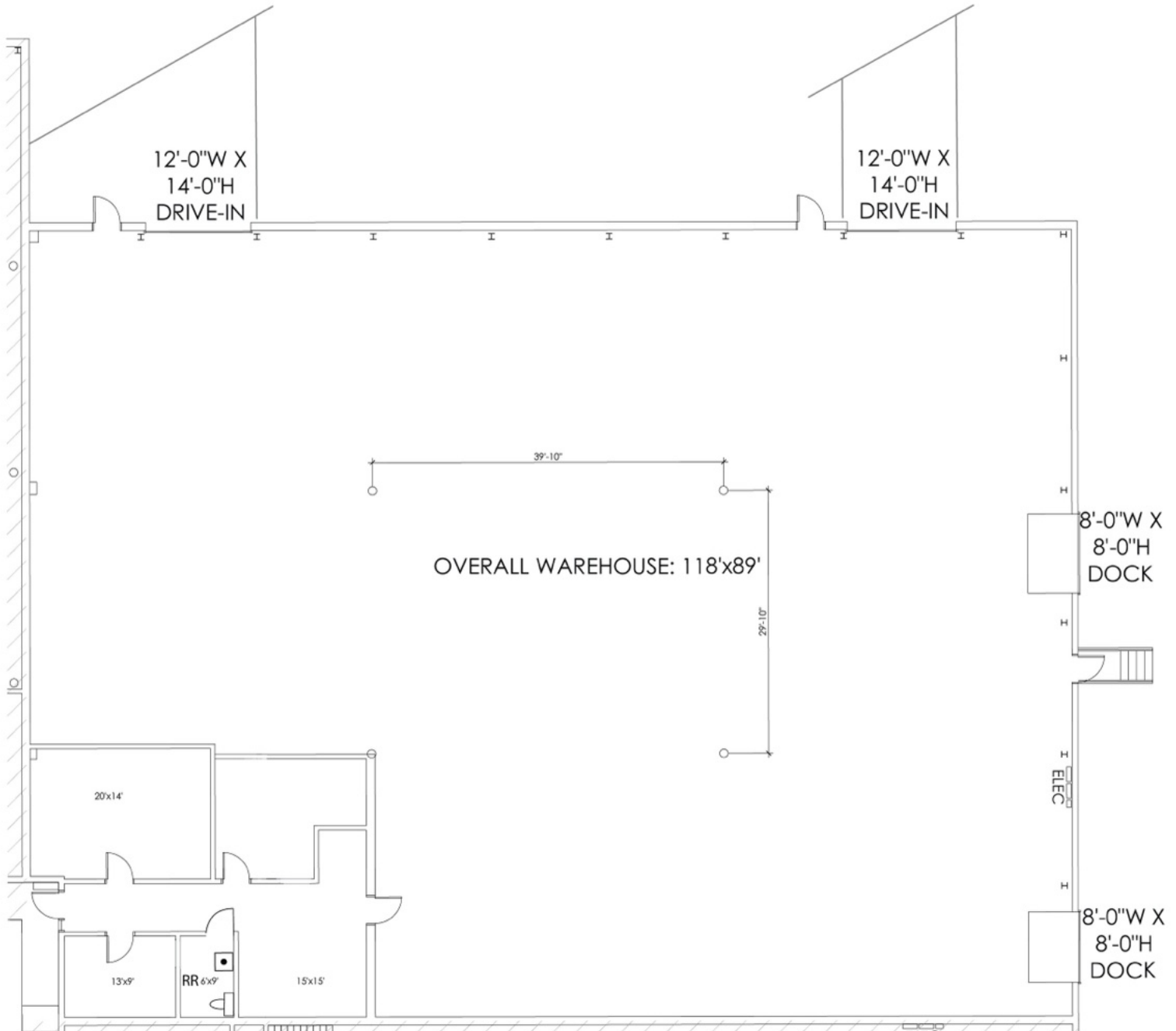
1810 South Lynhurst Drive Indianapolis, IN 46241

# FOR LEASE

Individual Spaces

**TURN-KEY**

SUITE	DATE AVAILABLE	AVAILABLE SF	OFFICE SF	DOCKS	DRIVE-INS	OPEX	CLEAR HEIGHT
1810 S Lynhurst Dr Suite E	Immediately	10,800 SF	1,068	2	2	\$2.84	18'



Liz DeKoninck | 765.516.4709 | [liz@halakar.com](mailto:liz@halakar.com)

Colton Snodgrass, CCIM | 317.536.0218 | [csnodgrass@halakar.com](mailto:csnodgrass@halakar.com)

Joshua D. Abrams, CCIM | 317.324.1613 | [Joshua@halakar.com](mailto:Joshua@halakar.com)



[www.Halakar.com](http://www.Halakar.com)

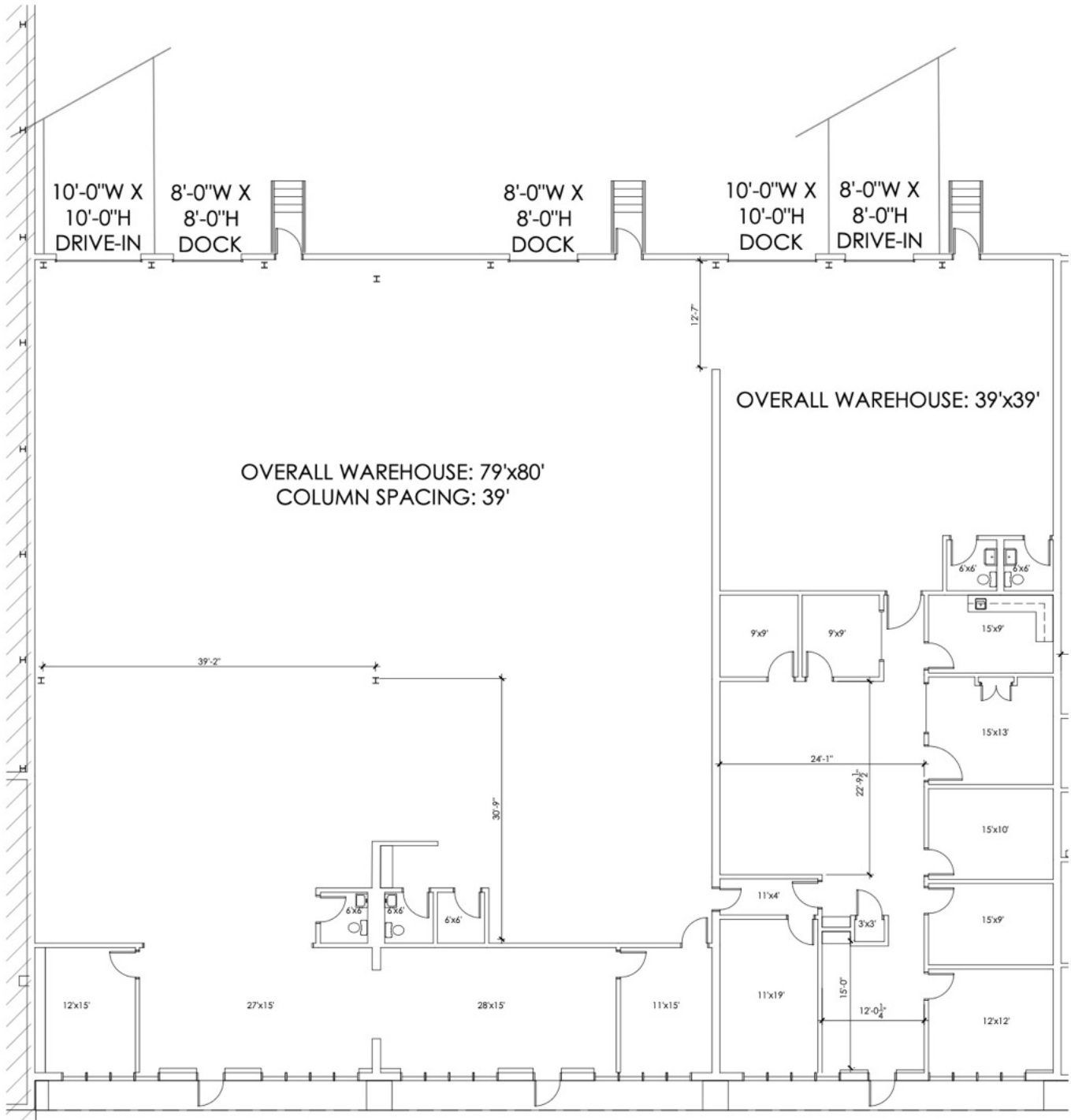
# Park Fletcher Building 17

1810 South Lynhurst Drive Indianapolis, IN 46241

# FOR LEASE

## Individual Spaces

SUITE	DATE AVAILABLE	AVAILABLE SF	OFFICE SF	DOCKS	DRIVE-INS	OPEX	CLEAR HEIGHT
1810 S Lynhurst Dr Suite Q R S	Immediately	12,000 SF	3,813	3	2	\$2.84	18'



Liz DeKoninck | 765.516.4709 | [liz@halakar.com](mailto:liz@halakar.com)

Colton Snodgrass, CCIM | 317.536.0218 | [csnodgrass@halakar.com](mailto:csnodgrass@halakar.com)

Joshua D. Abrams, CCIM | 317.324.1613 | [Joshua@halakar.com](mailto:Joshua@halakar.com)



[www.Halakar.com](http://www.Halakar.com)



**FOR  
LEASE**

## Individual Spaces

**TURN-KEY**

12'-0"W X 12'-0"H METAL RAMP

8'-0"W X 10'-0"H DOCK

8'-0"W X 8'-0"H DOCK

8'-0"W X 10'-0"H DOCK

8'-0"W X 8'-0"H DOCK

7x11'

OVERALL WAREHOUSE: 114'x199'

13x21'

8x12'

8x12'

11x20'

11x18'

13x12'

13x10'

13x10'

13x10'

9x5'

ELEC



[www.Halakar.com](http://www.Halakar.com)