



FOR LEASE

MEDICAL OFFICE BUILDING | ±1,479 SF

5815 N BLACK CANYON HWY | SUITE 103 | PHOENIX | AZ

PROPERTY HIGHLIGHTS:

- Asking \$18.00/sf/year Modified Gross
- Private Courtyard
- Secured Premises
- Six (6) Parking Spaces
- On-Site Property Manager
- Conveniently Located Just Off I-17 Hwy
- Medical and Office Uses Welcome
- Additional ±385 SF Available



FOR MORE INFORMATION. PLEASE CONTACT:

JEFF HAMBRO

Associate

P: 602.575.2316 | M: 480.540.8996

jhambro@daumcommercial.com

AZ #SA670834000

DAUM
COMMERCIAL REAL ESTATE SERVICES

D/AQ Corp. #01129558. Maps Courtesy ©Google & ©Microsoft. Although all information is furnished regarding for sale, rental or financing from sources deemed reliable, such information has not been verified and no express representation is made nor is any to be implied as to the accuracy thereof, and it is submitted subject to errors, omissions, changes of price, rental or other conditions, prior sale, lease or financing, or withdrawal without notice.

www.daumcommercial.com

GALLERY



FOR MORE INFORMATION. PLEASE CONTACT:

JEFF HAMBRO

Associate

P: 602.575.2316 | M: 480.540.8996

jhambro@daumcommercial.com

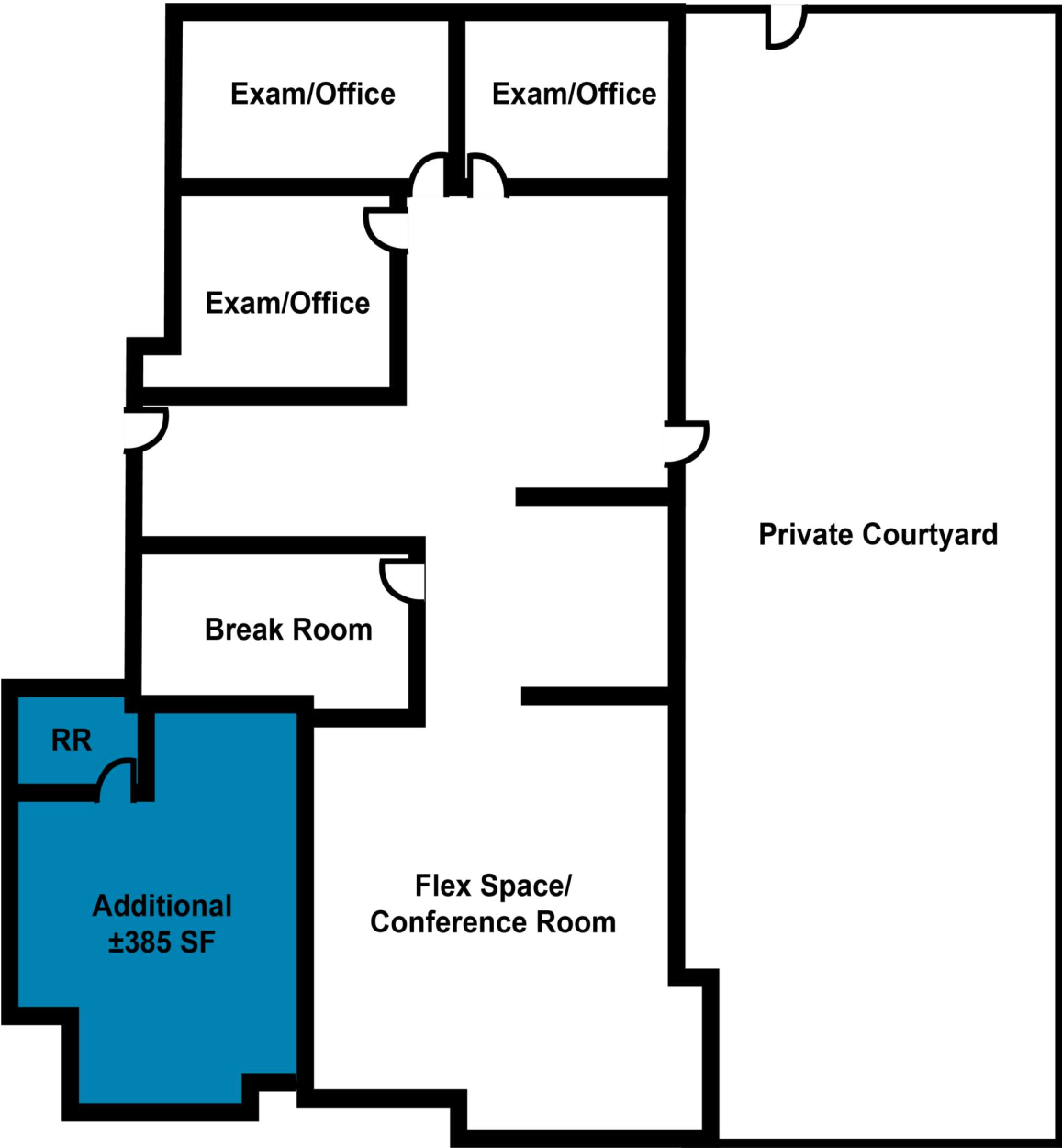
AZ #SA670834000

DAUM
COMMERCIAL REAL ESTATE SERVICES

D/AQ Corp. #01129558. Maps Courtesy ©Google & ©Microsoft. Although all information is furnished regarding for sale, rental or financing from sources deemed reliable, such information has not been verified and no express representation is made nor is any to be implied as to the accuracy thereof, and it is submitted subject to errors, omissions, changes of price, rental or other conditions, prior sale, lease or financing, or withdrawal without notice.

www.daumcommercial.com

SUITE 103 FLOOR PLAN



Not to Scale*

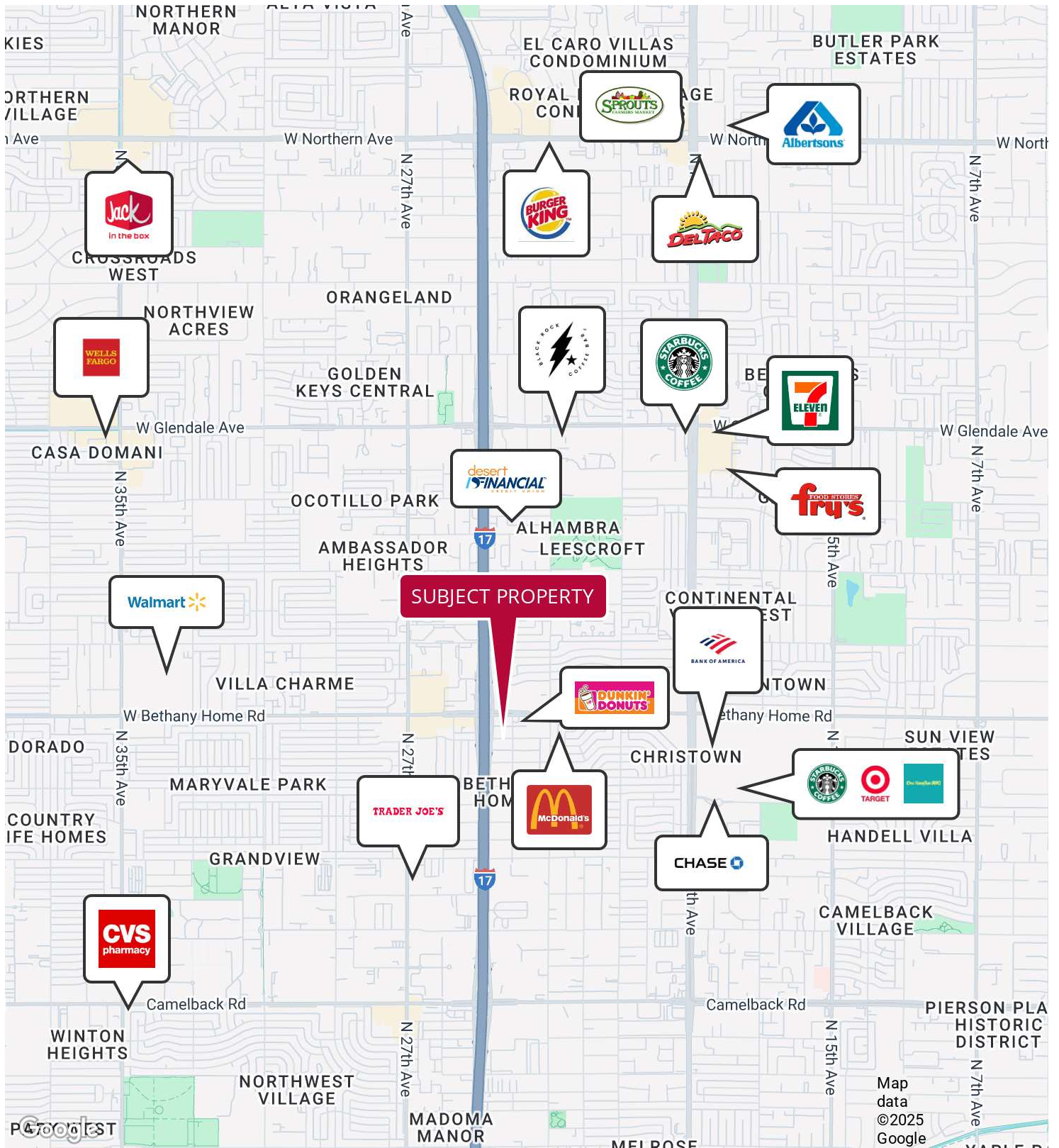
FOR MORE INFORMATION. PLEASE CONTACT:

JEFF HAMBRO
Associate
P: 602.575.2316 | M: 480.540.8996
jhambro@daumcommercial.com
AZ #SA670834000



D/AQ Corp. #01129558. Maps Courtesy ©Google & ©Microsoft. Although all information is furnished regarding for sale, rental or financing from sources deemed reliable, such information has not been verified and no express representation is made nor is any to be implied as to the accuracy thereof, and it is submitted subject to errors, omissions, changes of price, rental or other conditions, prior sale, lease or financing, or withdrawal without notice.

LOCATION MAP



FOR MORE INFORMATION. PLEASE CONTACT:

JEFF HAMBRO

Associate

P: 602.575.2316 | M: 480.540.8996

jhambro@daumcommercial.com

AZ #SA670834000



D/AQ Corp. #01129558. Maps Courtesy ©Google & ©Microsoft. Although all information is furnished regarding for sale, rental or financing from sources deemed reliable, such information has not been verified and no express representation is made nor is any to be implied as to the accuracy thereof, and it is submitted subject to errors, omissions, changes of price, rental or other conditions, prior sale, lease or financing, or withdrawal without notice.

www.daumcommercial.com