

FOR SUBLEASE

1202 McGaw Avenue, Irvine, Ca

***Rare Opportunity
Commercial Kitchen— Approx. 15,000 SF***

- Centrally Located in the Irvine Business District with Excellent Access to the 405 and 55 Frwys.
- Vacant and Ready for Occupancy
- Newly Refreshed Throughout
- 25 Parking Slots
- Available Sublease Term Through 12/31/33

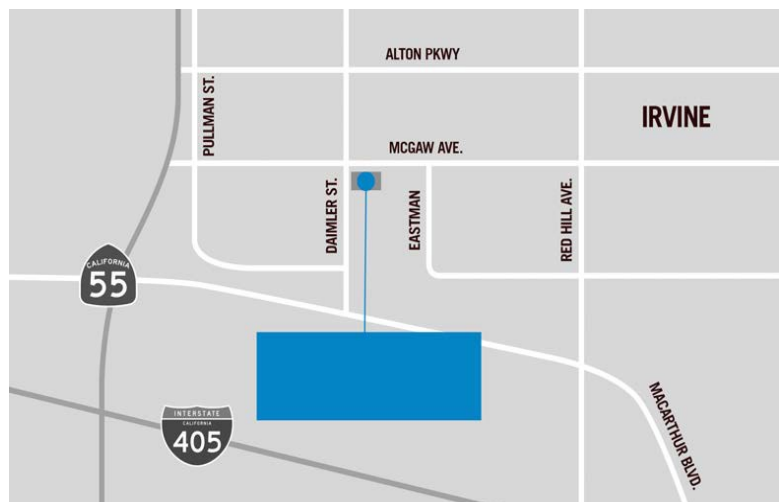


Commercial Real Estate Services Since 1987

Massy Farzine

714.343.9888

Mfarzine@esdicorp.com



To schedule a tour, please call 714.343.9888

No warranty or representation, expressed or implied, is made as to the accuracy of the information contained herein, and is submitted subject to errors, omissions, change of price, rental or other conditions, withdrawal without notice, and to any listing conditions imposed by our principals.



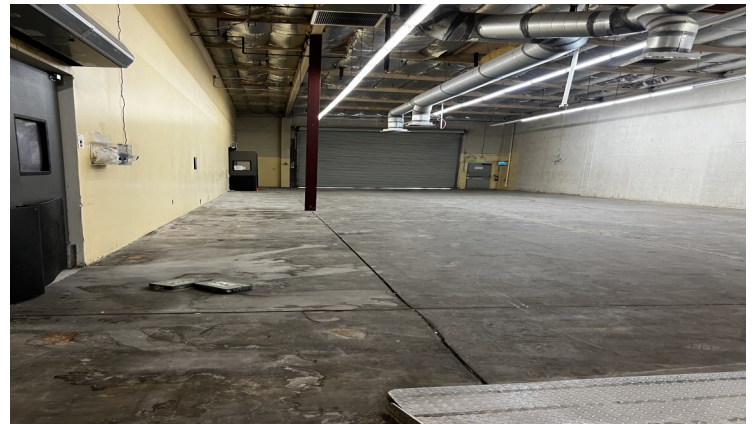
No warranty or representation, expressed or implied, is made as to the accuracy of the information contained herein, and is submitted subject to errors, omissions, change of price, rental or other conditions, withdrawal without notice, and to any listing conditions imposed by our principals.



FOR SUBLEASE

1202 McGaw, Irvine, Ca

\$2.10/sf MG



To schedule a tour, please call 714.343.9888

No warranty or representation, expressed or implied, is made as to the accuracy of the information contained herein, and is submitted subject to errors, omissions, change of price, rental or other conditions, withdrawal without notice, and to any listing conditions imposed by our principals.