





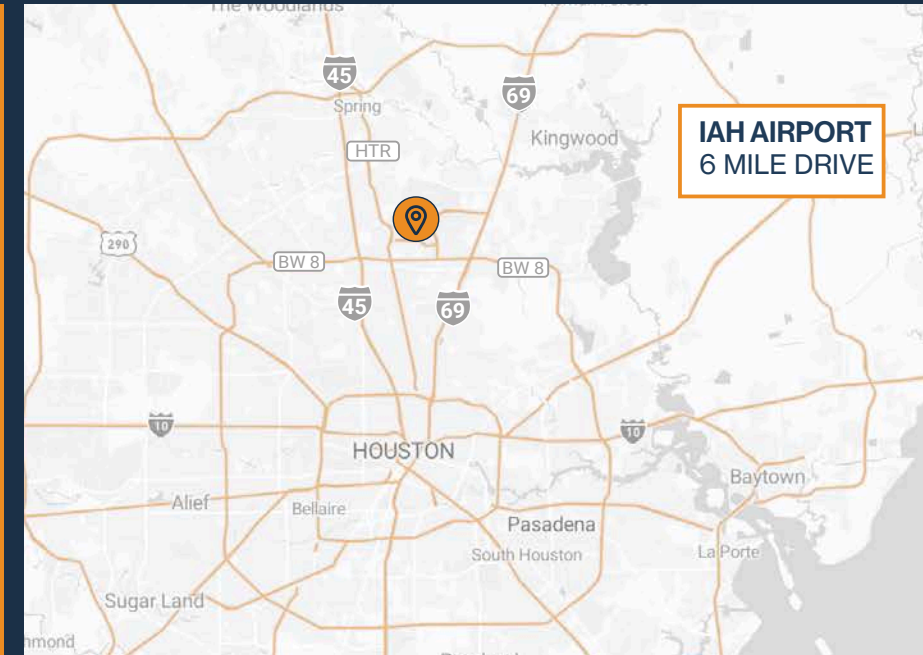


16623 ALDINE WESTFIELD ROAD

16623 ALDINE WESTFIELD RD, HOUSTON, TX 77032



-  **NORTH HOUSTON SUBMARKET**
-  **GREAT ACCESS TO HARDY TOLL ROAD, I-45, I-69, AND BELTWAY 8**
-  **25' CLEAR HEIGHT**
-  **FENCED LOT**
-  **TWO (2) OVERHEAD CRANES**
-  **GRADE LEVEL LOADING**
-  **~1 ACRE STABILIZED OUTSIDE STORAGE**
-  **25' WIDE DRIVEWAYS**
-  **33,407 SF SUITE**



RYAN YOUNG



281.584.3320

RYAN.YOUNG@FORT-COMPANIES.COM



FORT
LEASING

This information is deemed reliable, however, Fort makes no guarantee, warranties, or representations as to the completeness or accuracy thereof.

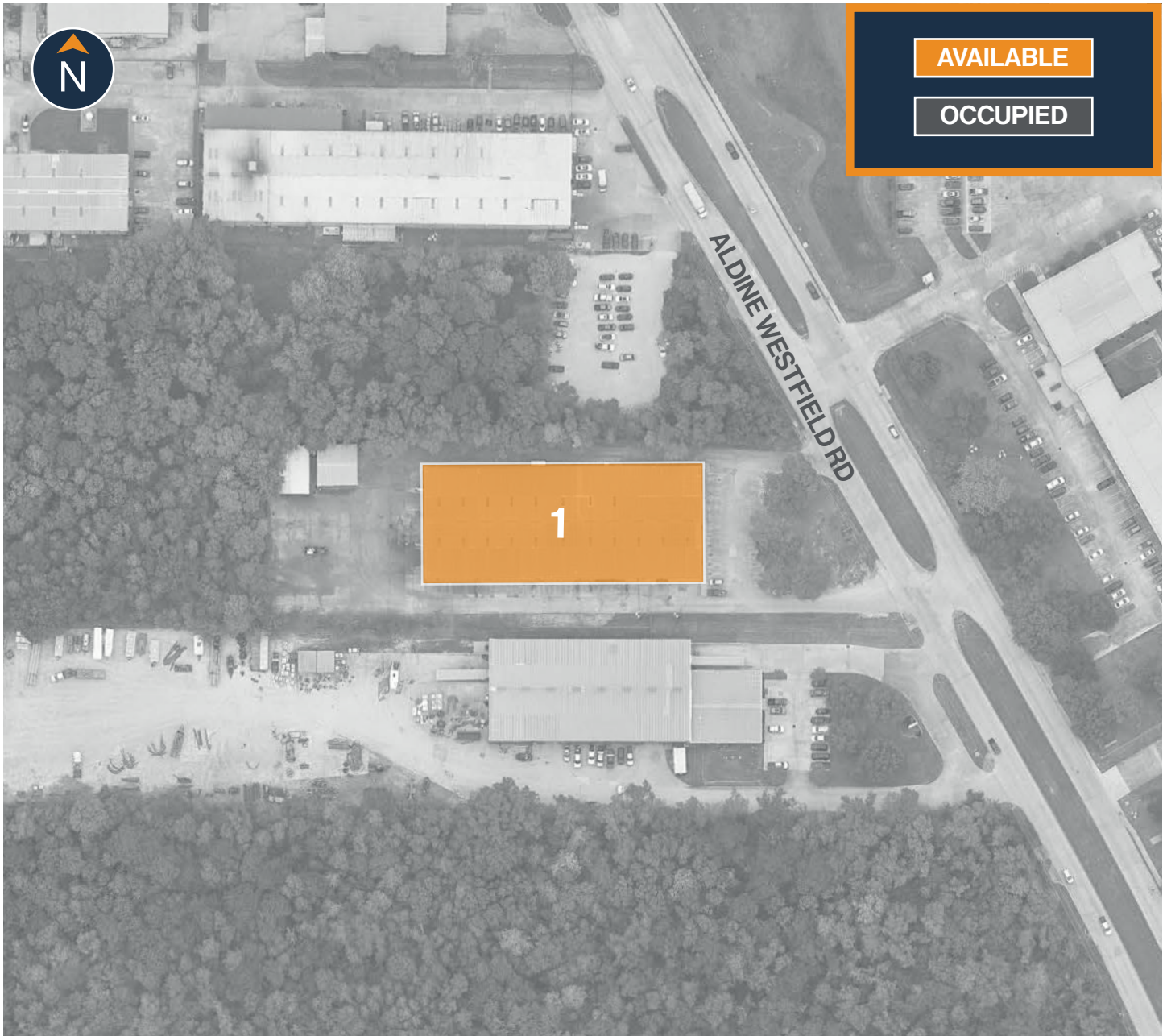


FORT
LEASING

16623 ALDINE WESTFIELD

16623 Aldine Westfield Road
Houston, TX 77032

SITE PLAN



RYAN YOUNG



281.584.3320



RYAN.YOUNG@FORT-COMPANIES.COM

This information is deemed reliable, however, Fort makes no guarantee, warranties, or representations as to the completeness or accuracy thereof.



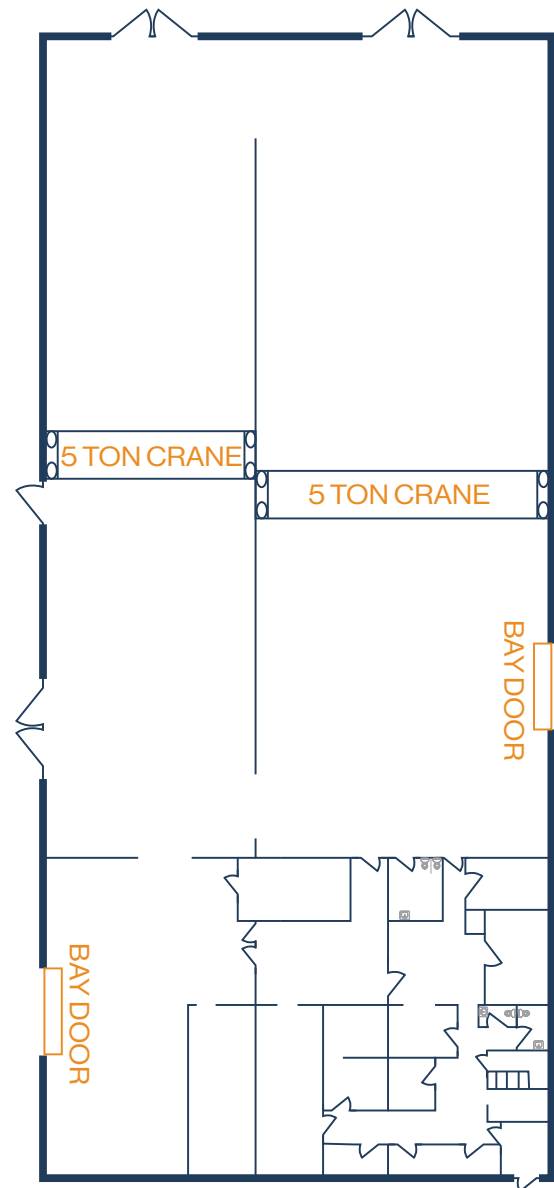
FLOOR PLAN — AVAILABLE IMMEDIATELY

- » 33,407 SF Total Available
- » (2) Bay Door
- » (2) 5 Ton Cranes
- » Fenced Outside Storage
- » Glass Storefront

SECOND FLOOR



FIRST FLOOR



RYAN YOUNG



281.584.3320



RYAN.YOUNG@FORT-COMPANIES.COM