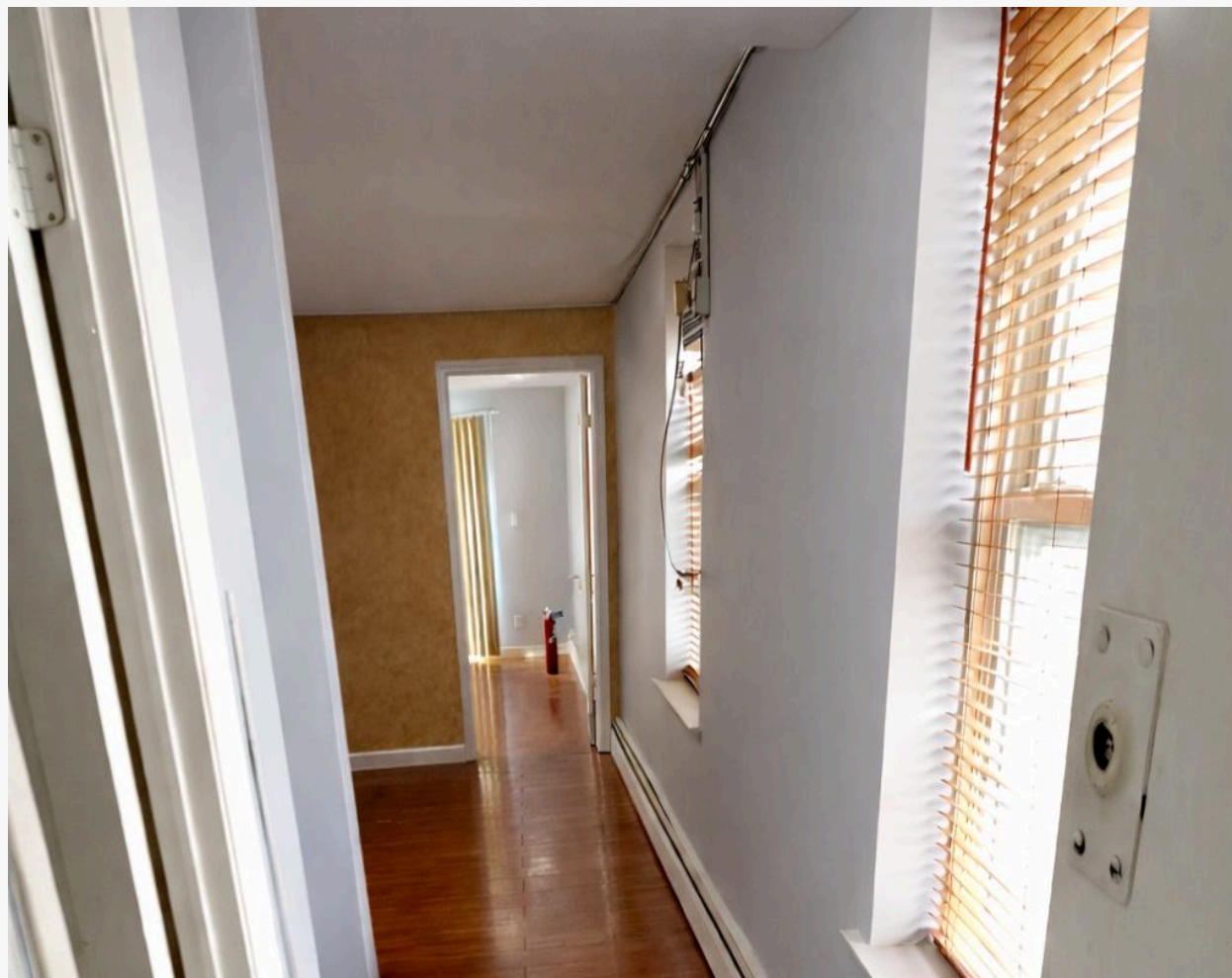


# OFFICE SPACE FOR LEASE



**2667 CONEY ISLAND AVE, BROOKLYN, NY 11223**



## PROPERTY DETAILS

### LOCATION INFO

CORNER OF AVE X &  
CONEY ISLAND AVE

### NEIGHBORHOOD

SHEEPSHEAD BAY

### BLOCK & LOT

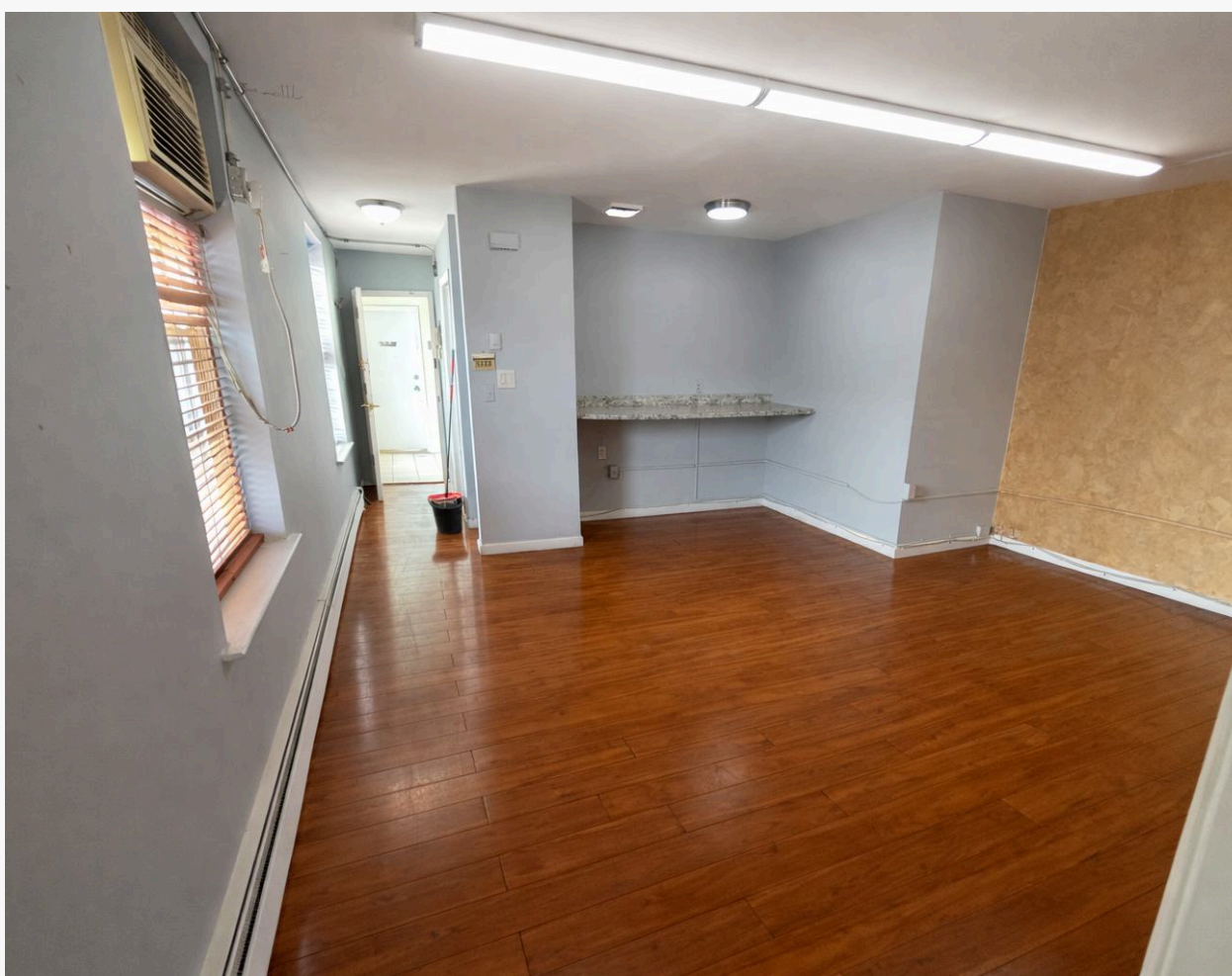
07395-0032

### ZONING

R4, C2-2

### SIZE

600 SF



## ASKING PRICE

**\$2,500/M**

## CONTACT EXCLUSIVE BROKER

DENIS ABAYEV

718-954-1363

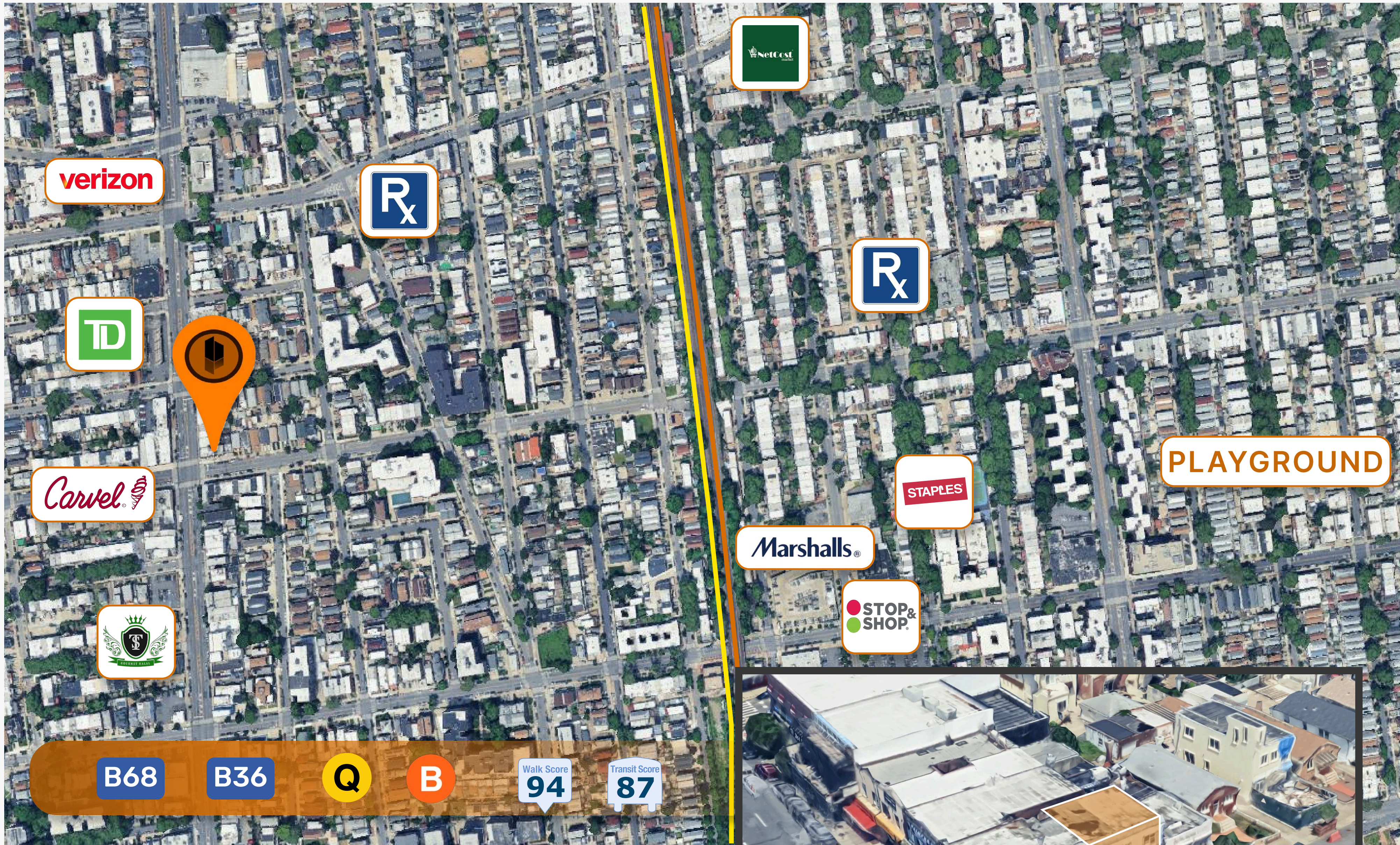
DENIS@COMMERCIALACQ.COM

FOR MORE INFORMATION ON THIS PROPERTY PLEASE CALL OUR OFFICE: **718.517.8700**







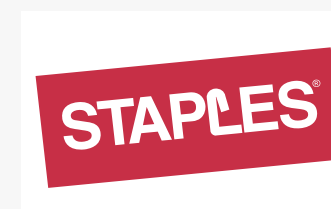


2667 CONEY ISLAND AVE,  
BROOKLYN, NY 11223

## PROPERTY COMMENTS

- 2ND FLOOR OFFICE
- PRIME SHEEPSHEAD BAY LOCATION
- PRIVATE TERRACE
- 2 PRIVATE ROOMS
- WINDOWS IN EVERY ROOM
- STEPS AWAY FROM PUBLIC TRANSPORTATION

### NEIGHBOURING TENANTS & AMENITIES



### CONTACT EXCLUSIVE BROKER

DENIS ABAYEV  
718-954-1363  
DENIS@COMMERCIALACQ.COM

**FOR MORE INFORMATION ON THIS PROPERTY PLEASE CALL OUR OFFICE: 718.517.8700**

COMMERCIAL ACQUISITIONS INC. HAS MADE EVERY EFFORT TO OBTAIN THE INFORMATION REGARDING THESE LISTINGS FROM SOURCES DEEMED RELIABLE. HOWEVER, WE CANNOT WARRANT THE COMPLETE ACCURACY THEREOF SUBJECT TO ERRORS, OMISSIONS, CHANGE OF PRICE, RENTAL OR OTHER CONDITIONS, PRIOR SALE, LEASE OR FINANCING, OR WITHDRAWAL WITHOUT NOTICE. WE RECOMMEND TO THE BUYER THAT ANY INFORMATION, WHICH IS OF SPECIAL INTEREST, SHOULD BE OBTAINED THROUGH INDEPENDENT VERIFICATION. ALL MEASUREMENTS MAY BE APPROXIMATE.