

500 Court Square
Charlottesville, Virginia



About 500 Court Square:

500 Court Square was designed by renowned architect Stanhope Johnson in 1926 as the Monticello Hotel, the first hotel in Charlottesville, before being converted into condominiums in the 1970s. This offering is comprised of 10,500 finished square feet on two floors, all in excellent condition. The space is flexible including a welcoming reception area, numerous private offices, several conference rooms, restrooms, and a kitchen. This is a rare opportunity to own an office in a premium downtown location.

- Prime Downtown location
- 10,500 sq. ft. on two floors
- Tremendous views of the Albemarle Courthouse & Historic Court Square
- Opportunity for investor or occupant
- Two blocks from the Downtown Mall and numerous amenities
- Original architectural details, high ceilings, classic arched windows
- Offered below appraised and assessed values
- Priced at \$1,850,000 (\$175/sq. ft.)



www.mcleanfaulconer.com



www.mcleanfaulconer.com

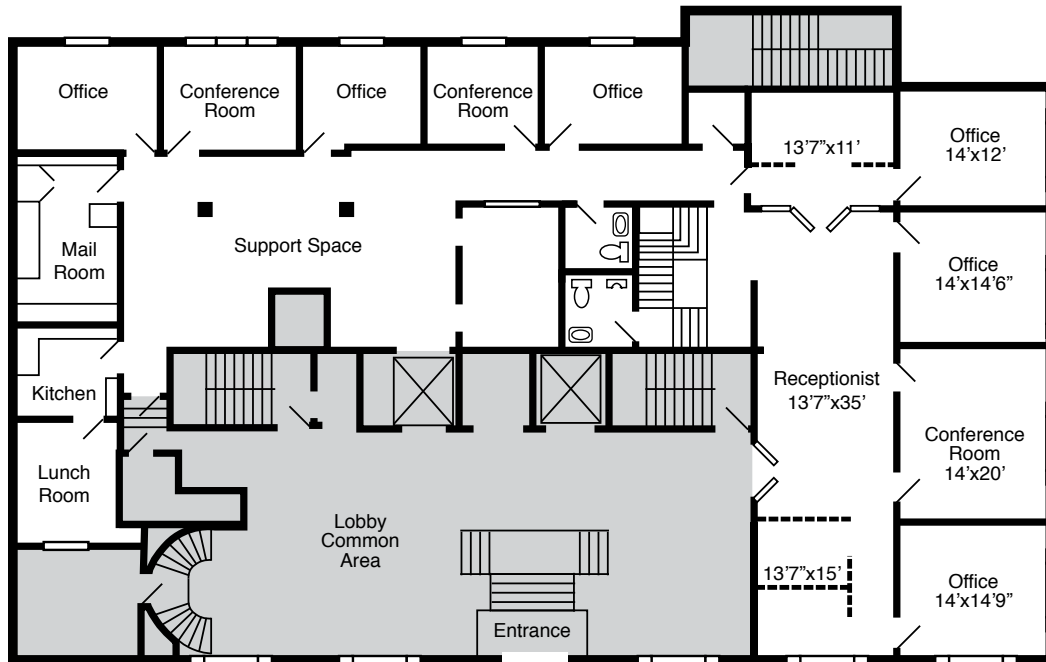


www.mcleanfaulconer.com

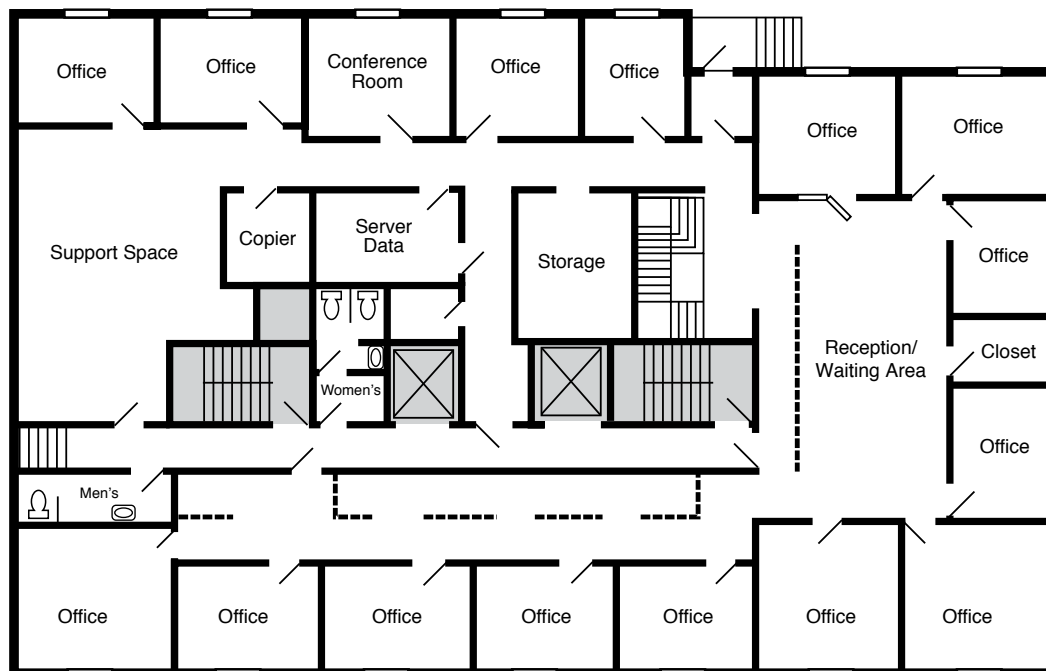


First Floor

Current Floor Plans

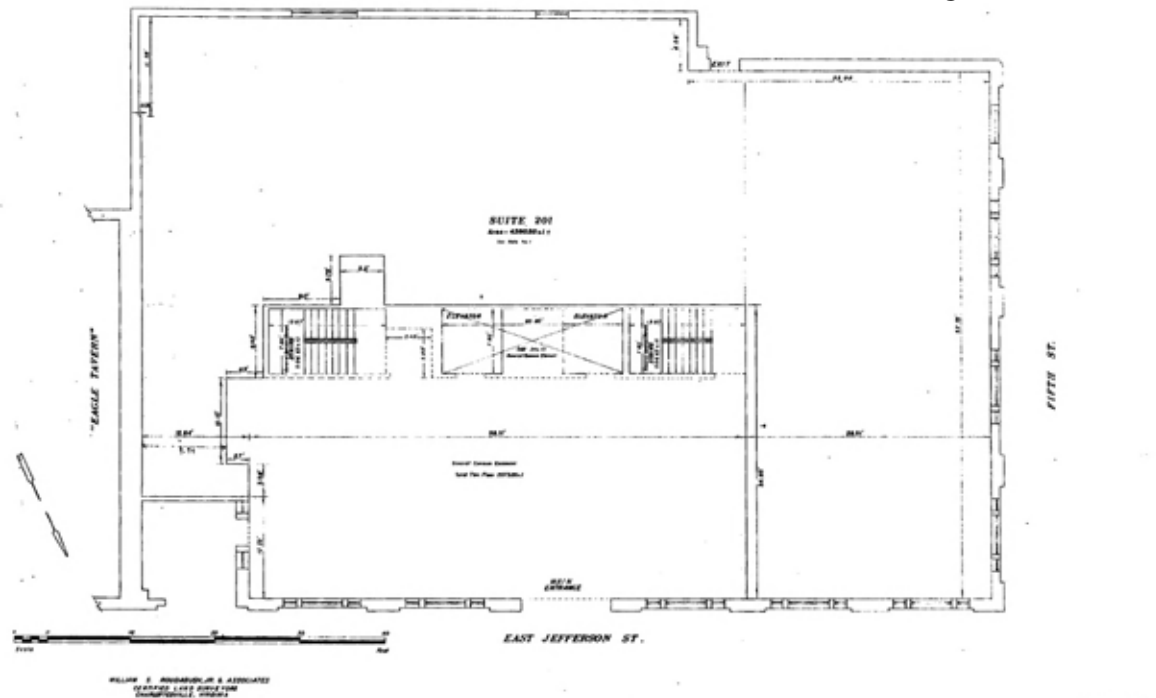


Second Floor

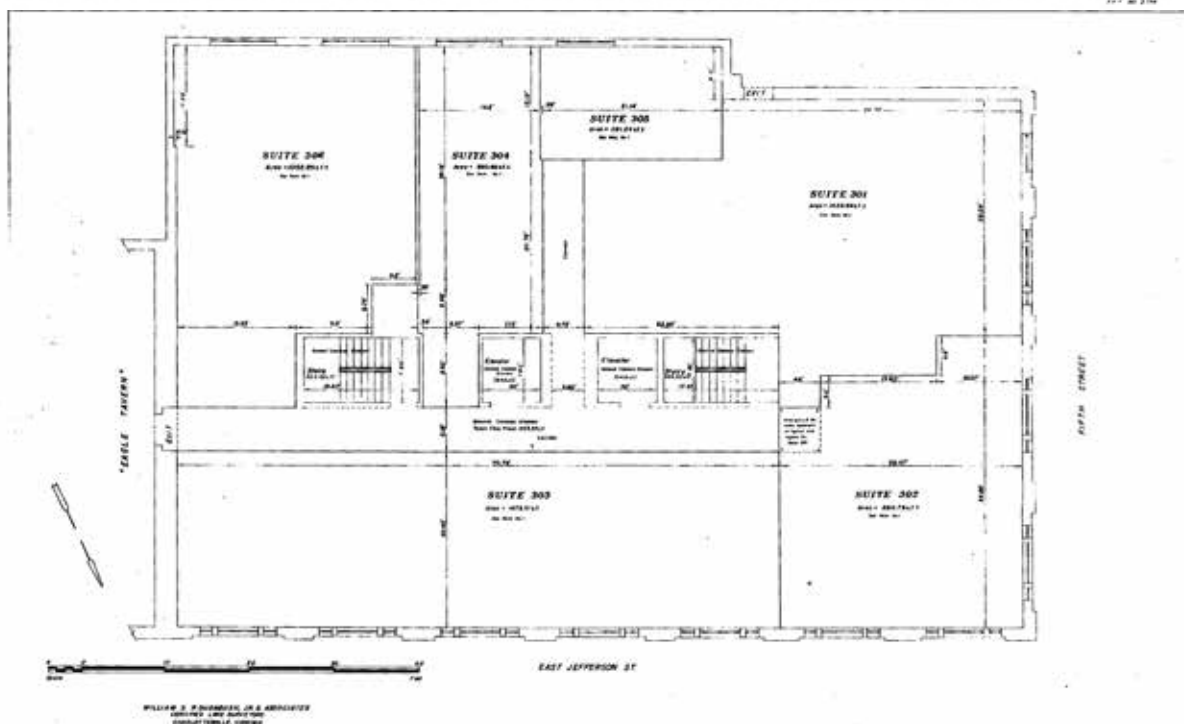




Original Condo Floor Plans



MONTICELLO PLAZA CONDOMINIUMS CHARLOTTESVILLE, VIRGINIA



MONTICELLO PLAZA CONDOMINIUMS CHARLOTTESVILLE, VIRGINIA

500 Court Square · Charlottesville · VA · 22902
Commercial Office Space · 10,500 square feet



Charlotte Dammann

cell: 434.981.1250

email: cdammann@aol.com



MCLEAN FAULCONER INC.
Commercial Real Estate

503 Faulconer Drive, Suite 5
Charlottesville, VA 22903
www.mcleanfaulconer.com

Ed Brownfield

cell: 434.981.0045

email: ed.brownfield@gmail.com

BROWNFIELD
REALTY ADVISORS INC.

1126 Dryden Lane
Charlottesville, VA 22903
www.brownfieldrealtyadvisors.com



All information is from sources deemed reliable but is not guaranteed and is submitted subject to any errors, omissions, changes in price or prior sale, or withdrawal without notice.
National Association of Realtors, Virginia Chapter, National Farm & Land Institute, American Chapter International Real Estate Federation, Equal Housing Opportunity.

