

# 9210 SOVEREIGN ROW

Dallas, TX 75247

## Industrial For Lease

7,320 SF



Leasing Information:  
214.740.3300

**Gil Stroube**  
214.740.3427  
gstroube@lpc.com

# Lincoln

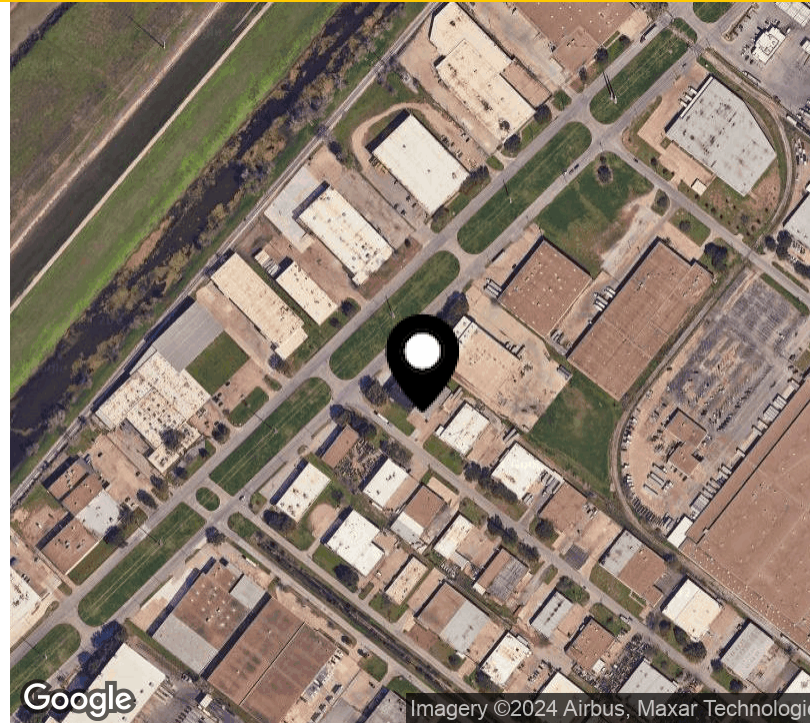
Lincoln Property Company  
8111 Douglas Avenue  
Dallas, TX 75225

[www.lpc.com](http://www.lpc.com)

# 9210 SOVEREIGN ROW

Dallas, TX 75247

Industrial For Lease



## Property Highlights

- Approximately 1,000 SF office space
- Clear height: 13' 6"
- Easy Access to 183, 114, 35E, Loop 12

## Availabilities

9210

## SF

7,320 SF

## Lease Rate

Negotiable

## Date Available

8/1/24

**Gil Stroube**

214.740.3427

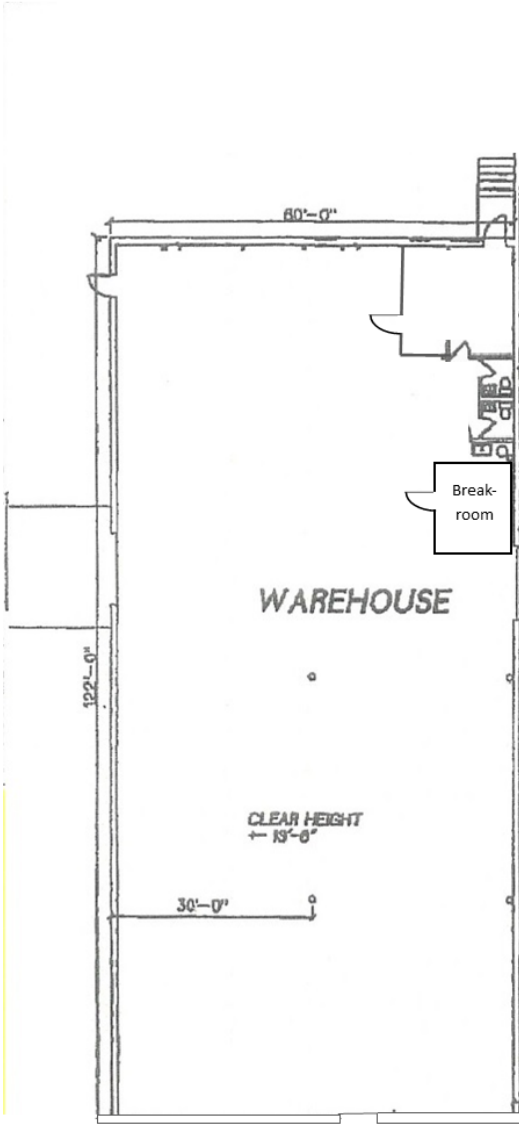
gstroube@lpc.com

**Lincoln**

# 9210 SOVEREIGN ROW

# Space Plan

Dallas, TX 75247



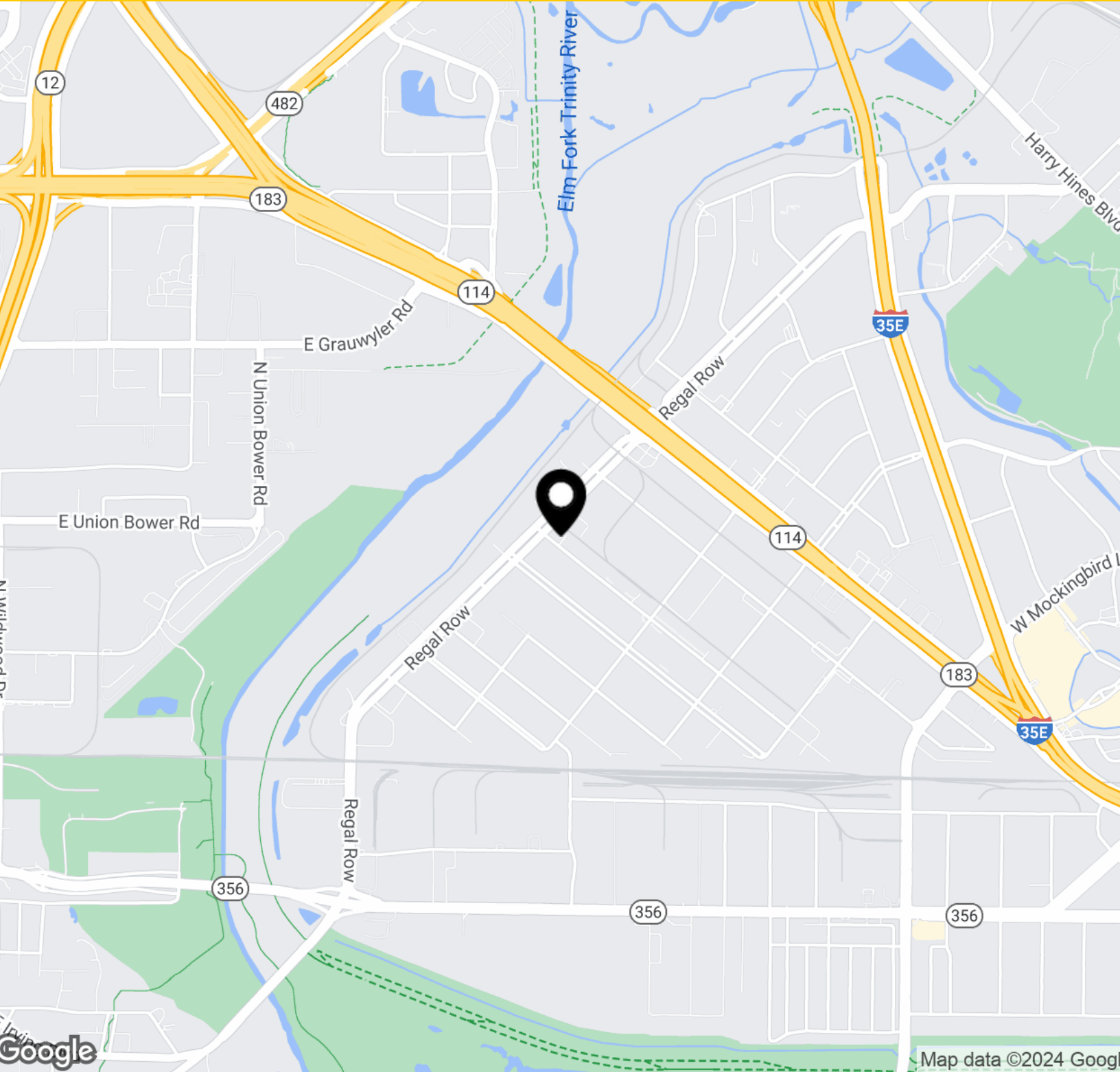
**Gil Stroube**  
214.740.3427  
gstroube@lpc.com

# Lincoln

# 9210 SOVEREIGN ROW

Location Map

Dallas, TX 75247



**Gil Stroube**  
214.740.3427  
gstroube@lpc.com

**Lincoln**



# 9210 SOVEREIGN ROW

Dallas, TX 75247

Leasing Information:  
214.740.3300

**Gil Stroube**  
214.740.3427  
gstroube@lpc.com

## Lincoln

Lincoln Property Company  
8111 Douglas Avenue  
Dallas, TX 75225

[www.lpc.com](http://www.lpc.com)