



Sublease Available

Allred Cotton Center

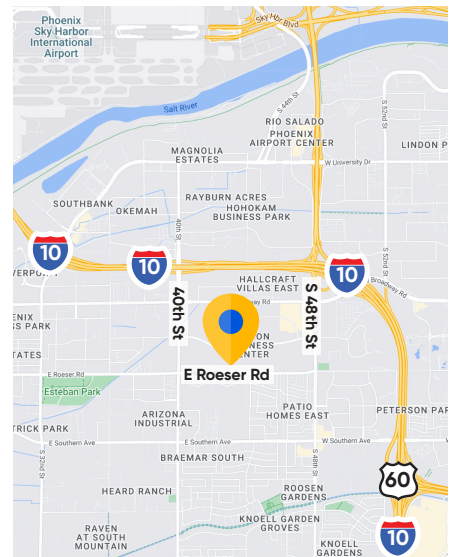
Phoenix, AZ 85040

Overview

Building:	4323 E Cotton Center, Phoenix, AZ 85040
Premises:	35,237 SF - First Floor (21,172 SF) Second Floor (14,090 SF)
Term:	Through 05/31/26
Available:	Immediate
Rental Rate:	Withheld
Building Class:	Class A Flex Office/Industrial Building
Parking:	4.14/1,000 SF

Space Features

- All Furniture To Stay
- Centrally Located
- Close Proximity to Freeways and Airport
- Single Tenant User



For more information:



Brandon Clarke
602.770.3464 mobile
bclarke@cresa.com



Jake Bonnell
602.826.8615 mobile
jbonnell@cresa.com

Cresa

2398 E Camelback Rd, Suite 900
Phoenix, AZ 85016

Sublease Available

cresa

Allred Cotton Center

Phoenix, AZ 85040

Building - 35,237 SF



Sublease Available

cresa

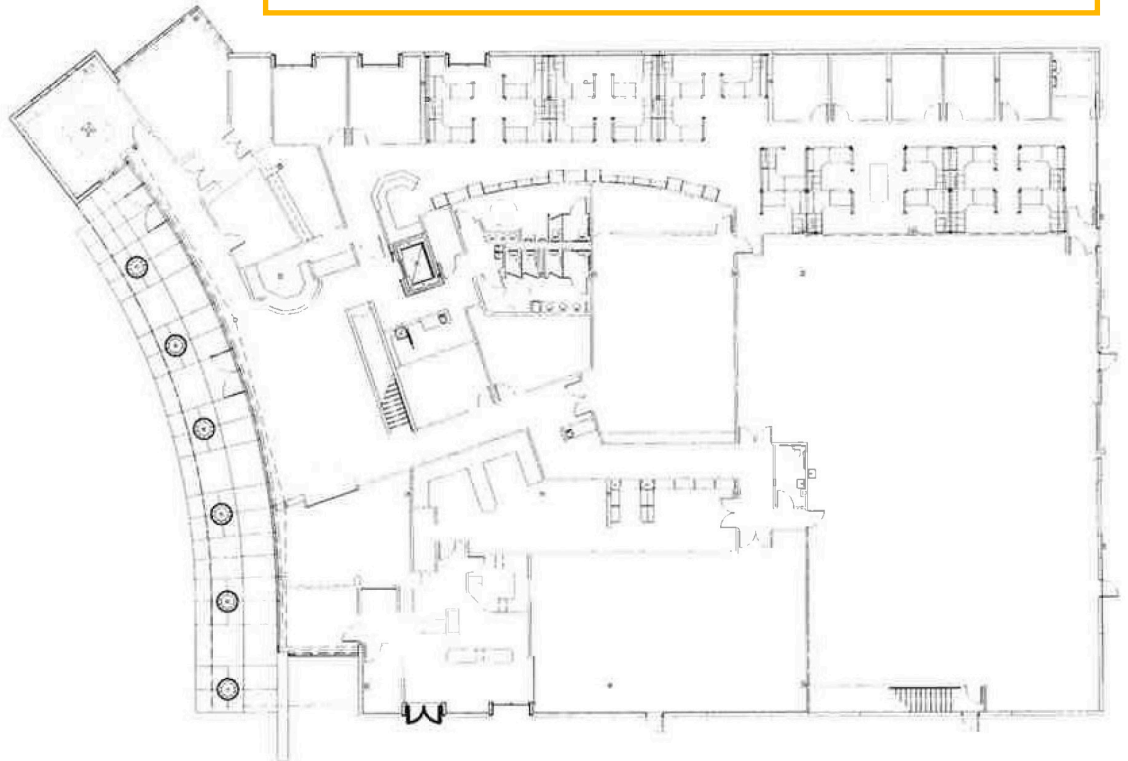
Allred Cotton Center

Building - 35,237 SF

Phoenix, AZ 85040

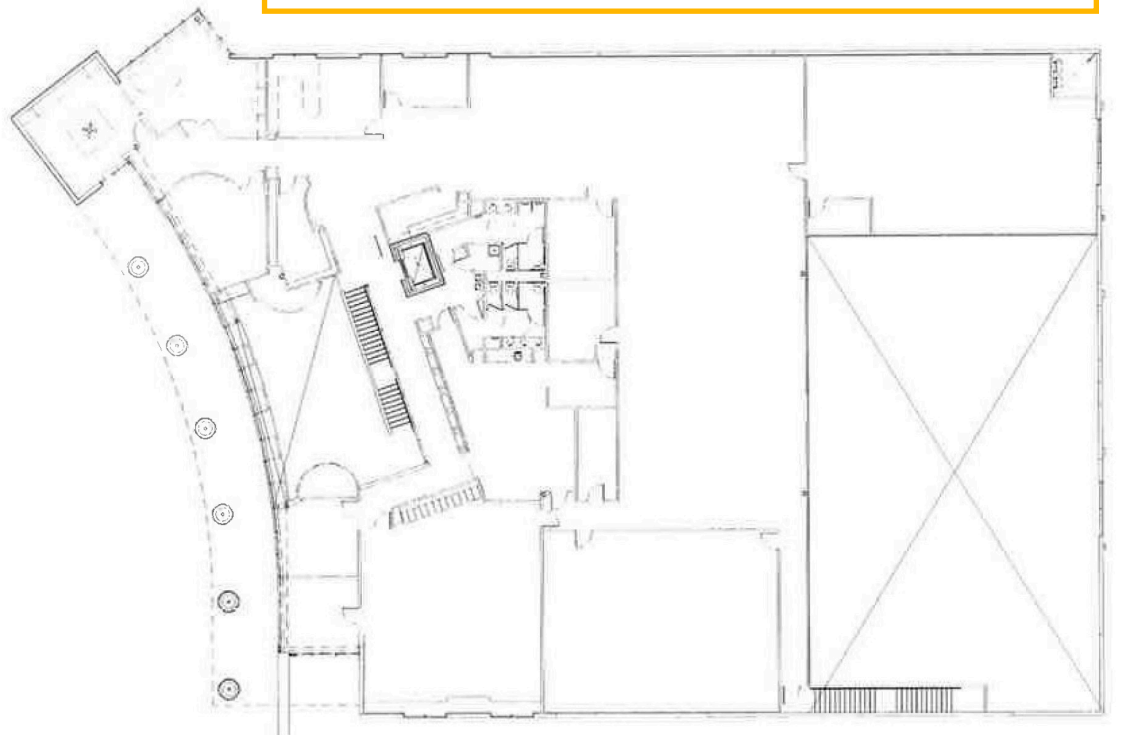
[FIRST FLOOR VIRTUAL TOUR LINK](#)

First Floor
21,172 SF



[SECOND FLOOR VIRTUAL TOUR LINK](#)

Second Floor
14,090 SF



Disclaimer: Cresa © 2019. All rights reserved. The information contained in this document has been obtained from sources believed reliable. While Cresa does not doubt its accuracy, Cresa has not verified it and makes no guarantee, warranty, or representation about it. It is your responsibility to independently confirm its accuracy and completeness. Any projections, opinions, assumptions or estimates used are for example only and do not represent the current or future performance of the property. The value of this transaction to you depends on tax and other factors which should be evaluated by your tax, financial and legal advisors. You and your advisors should conduct a careful, independent investigation of the property to determine to your satisfaction the suitability of the property for your needs.