

Paseo Industrial Park

Located at 1600-1840 Vernon Street, 1925 Bedford Avenue

For Lease



Excellent Location in Business Friendly, North Kansas City

- 22' Clear With Wet Sprinkler System
- Dock and Drive-In Loading
- 10 Minutes to Downtown
- Outside Storage/Trailer Parking Available
- 192,390 SF Multi-Tenant Building

For more information:

Christian Wead
816.412.8472
cwead@blockllc.com

Michael R. Block, CPM
816.932.5549
mblock@blockllc.com

The information contained in this marketing flyer is presented as general information only. Block Real Estate Services, LLC. makes no representation as to its accuracy. This information is not intended as legal, financial or real estate advice and must not be relied upon as such. You should make your own inquiries, obtain independent inspections, and seek professional advice tailored to your specific circumstances before making any legal, financial or real estate decisions.

Building Specification

Building SF:	192,390 Square Feet
Bay Size:	Typical bays are 6,665 square feet, measuring 215' x 31'. Recessed dock bays are 5,766 square feet, measuring 186' x 31'.
Land Area:	10 +/- acres can use for outside storage/trailer parking at SWC of Bedford and Vernon
Built:	Renovated in 2007
Ceiling Height:	22' Clear – (21'9" Minimum Clearance at East Edge (Docks) to 23' Minimum at West Edge)
Sprinkler:	Wet system, with fire pump
Building Loading:	27 Docks as follows: 18 recessed 10'x10' - 9 with 25,000 lb pit levelers; 3 existing 10'x10' - 1 with 25,000 lb pit leveler; 6 existing 8'x10' - 3 with 25,000 lb pit leveler; (see plan detail on loading)
Electrical:	3 Phase, 600 Amps (120/208 V) Services (multiple)
Rail Service:	BNSF - KAW Valley Railroad does switching (not currently active)
Rail Doors:	14 -10'x10' and 1-12' x 14'
Construction:	Brick and Block
Parking:	200+, with additional land to the north for more parking and truck/trailer parking.
Column Spacing:	31' by 31'
Truck Court:	All original docks are 63' from edge of dock to street curb Line. Recessed docks are 93' from edge of dock to the street curb line.
Lighting:	LED augmented by clerestory windows on the east and west elevations
Skylights/ Windows:	Celestory windows for natural light along east and west upper walls in south end. Skylights also provide natural light in both north and south ends.
Fiber Optic Provider:	liNKCity, www.linkcity.org /Google Fiber

Specifications Continued

Net Charges (2025 Estimates):	CAM:	\$0.75
	INS:	\$0.41
	<u>RE TAXES:</u>	<u>\$0.97</u>
	Total:	\$2.13

*Note: Lease is Modified Gross Industrial with a Base Year for real estate taxes and insurance and tenant paying prorate CAM.

Electrical: 1200 Amps, 480-Volt with subpanels

Warehouse Heat/Ventilation: Forced air gas unit heaters. Air flow is augmented by rear (west side) wall ventilation fans and ceiling fans for air movement. Rail doors on rear allow for cross-ventilation in Summer

Lighting: LED lighting augmented by skylights

Office Space: Per floor plan on page 5, Unit #1925 Bedford has 5,600± SF of offices with an additional 2,800± SF offices/restroom on mezzanine, and 2,800± additional mezzanine storage. The space on the mezzanine is "rent free." Unit #1806 Vernon has 2,852± SF office while unit #1600 Vernon has 4,328± SF of office.

For more information:

Christian Wead
816.412.8472
cwead@blockllc.com

Michael R. Block, CPM
816.932.5549
mblock@blockllc.com

Paseo Industrial Park

Located at 1600-1840 Vernon Street, 1925 Bedford Avenue

For Lease



For more information:

Christian Wead
816.412.8472
cwead@blockllc.com

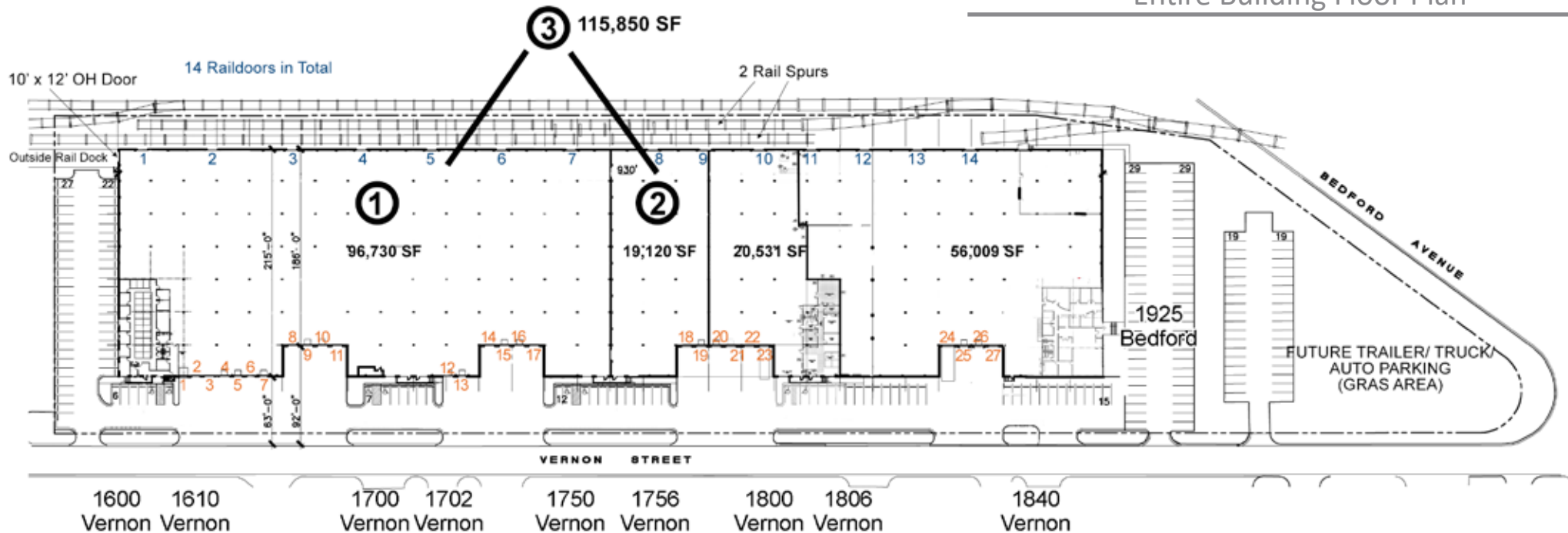
Michael R. Block, CPM
816.932.5549
mblock@blockllc.com

Paseo Industrial Park

Located at 1600-1840 Vernon Street, 1925 Bedford Avenue

For Lease

Entire Building Floor Plan



1600-1756 Vernon
Total: 115,850 SF
Office: 4,328 SF

1806 Vernon
Total: 20,531 SF
Office: 2,852 SF

1840 Vernon, 1925 Bedford
Total: 56,009 SF
Office: 5,600 SF

Combined SF: 192,390

Docks North to South

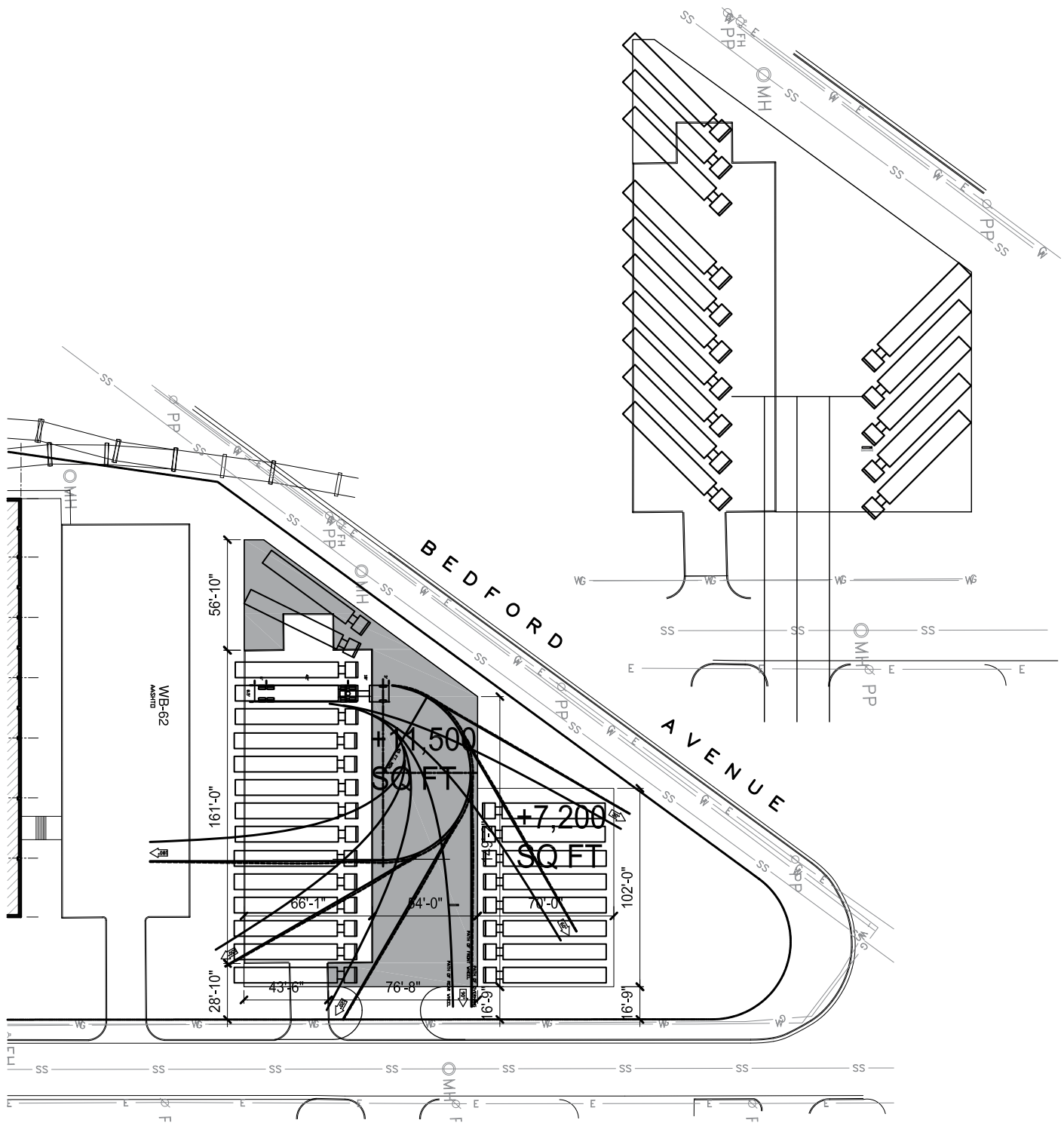
1: 8' x 10' bumpers	6: 8' x 10' pit leveler	11: 10' x 10' bumpers	16: 10' x 10'	20: 10' x 10' with pit leveler with seal	24: 12' x 14' drive-in door with ramp
2: 8' x 10' bumpers	7: 8' x 10'	12: 10' x 10'	17: 10' x 10' bumpers	21: 10' x 10' with pit leveler with seal	25: 10' x 10' with pit leveler with seal
3: 10' x 10' bumpers	8: Recessed 10' x 10' bumpers	13: 8' x 10' pit leveler	18: 10' x 10' bumpers	22: 10' x 10' with seal and bumpers	26: 10' x 10' with pit leveler with seal
4: 10' x 10' bumpers	9: 10' x 10' pit leveler with seal	14: 10' x 10' bumpers	19: 10' x 10'	23: 10' x 12' drive-in door with ramp	27: 10' x 10' with bumpers
5: 8' x 10' Dock leveler	10: 10' x 10' no leveler	15: 10' x 10' no leveler			

Paseo Industrial Park

Located at 1600-1840 Vernon Street, 1925 Bedford Avenue

For Lease

Proposed Trailer Parking

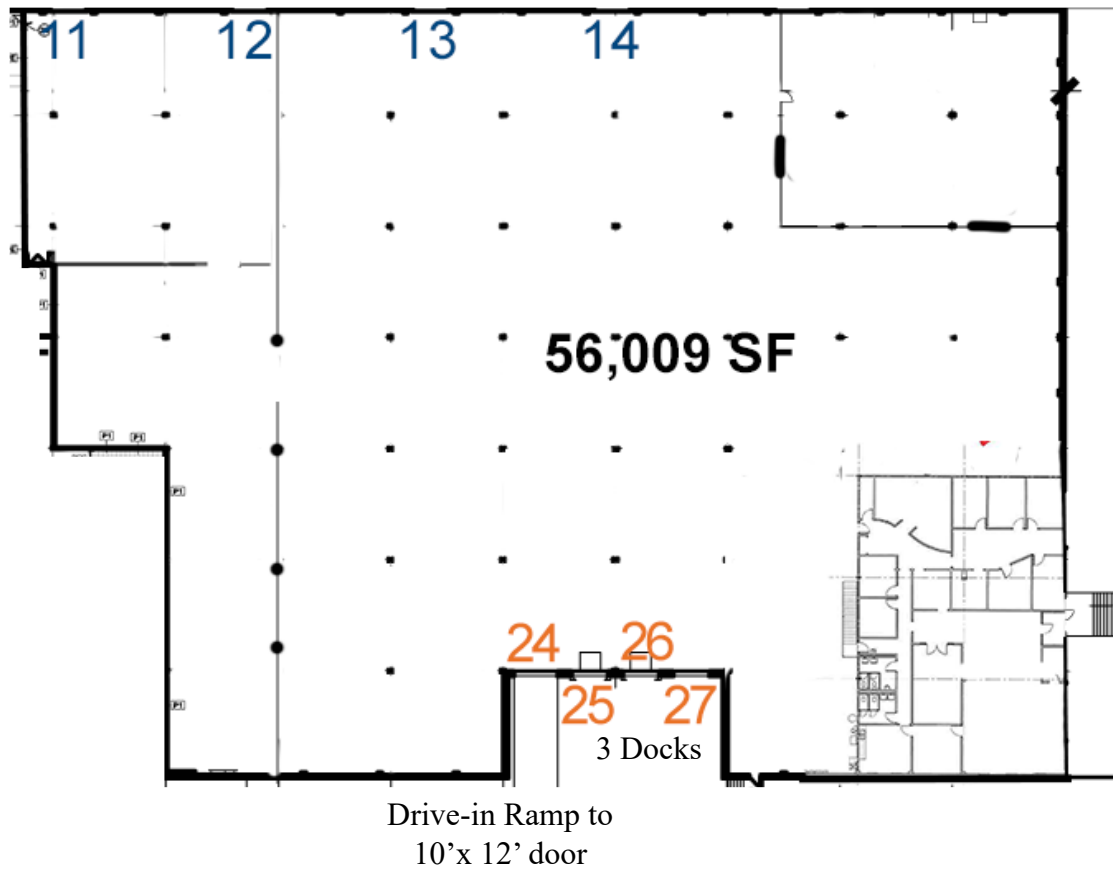


Paseo Industrial Park

Located at 1600-1840 Vernon Street, 1925 Bedford Avenue

For Lease

1925 Bedford First Floor Plan

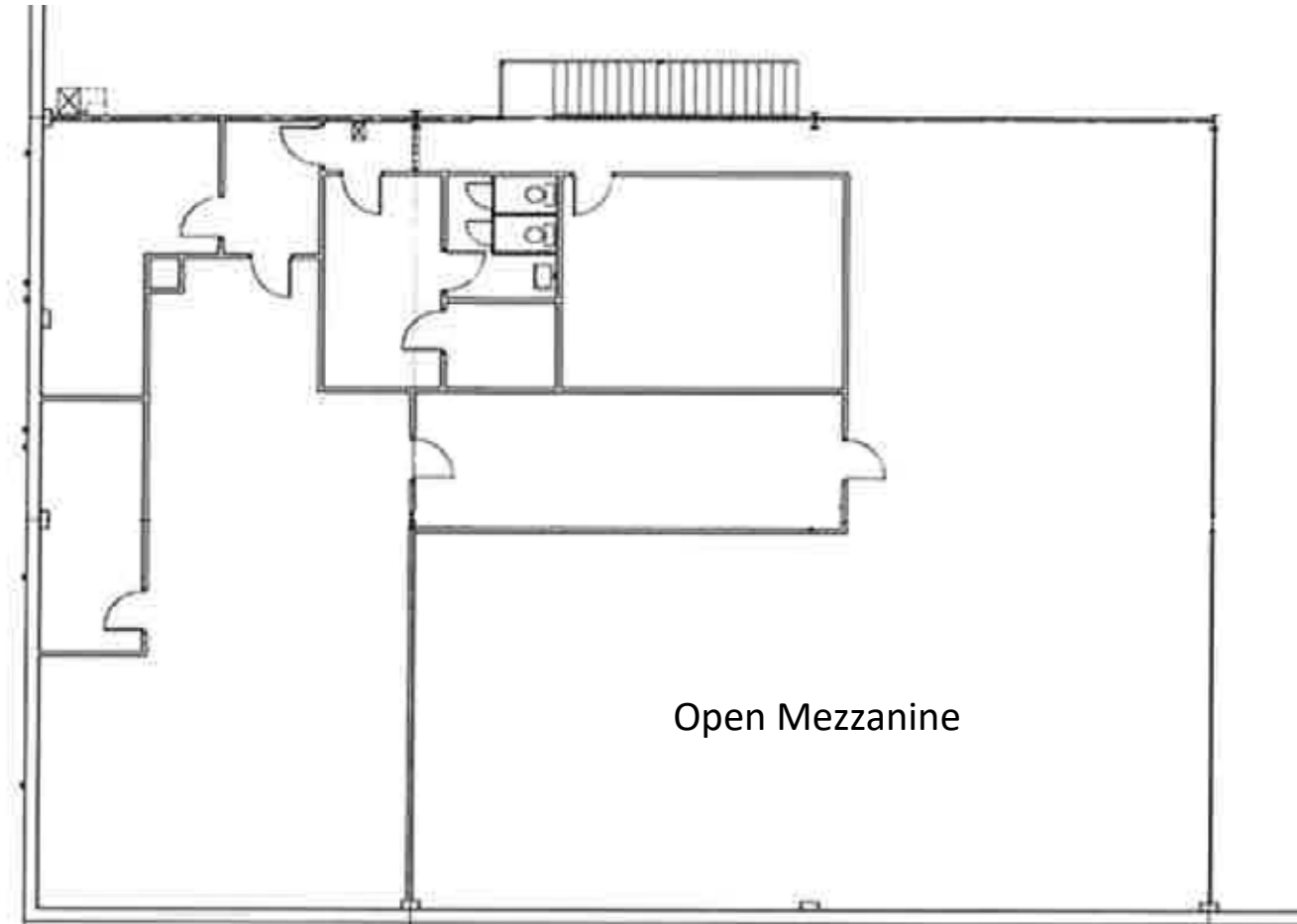


Paseo Industrial Park

Located at 1600-1840 Vernon Street, 1925 Bedford Avenue

For Lease

1925 Bedford Second Floor Plan



4622 Pennsylvania Avenue, Suite 700
Kansas City, MO 64112
816.756.1400 | www.BLOCKLLC.com

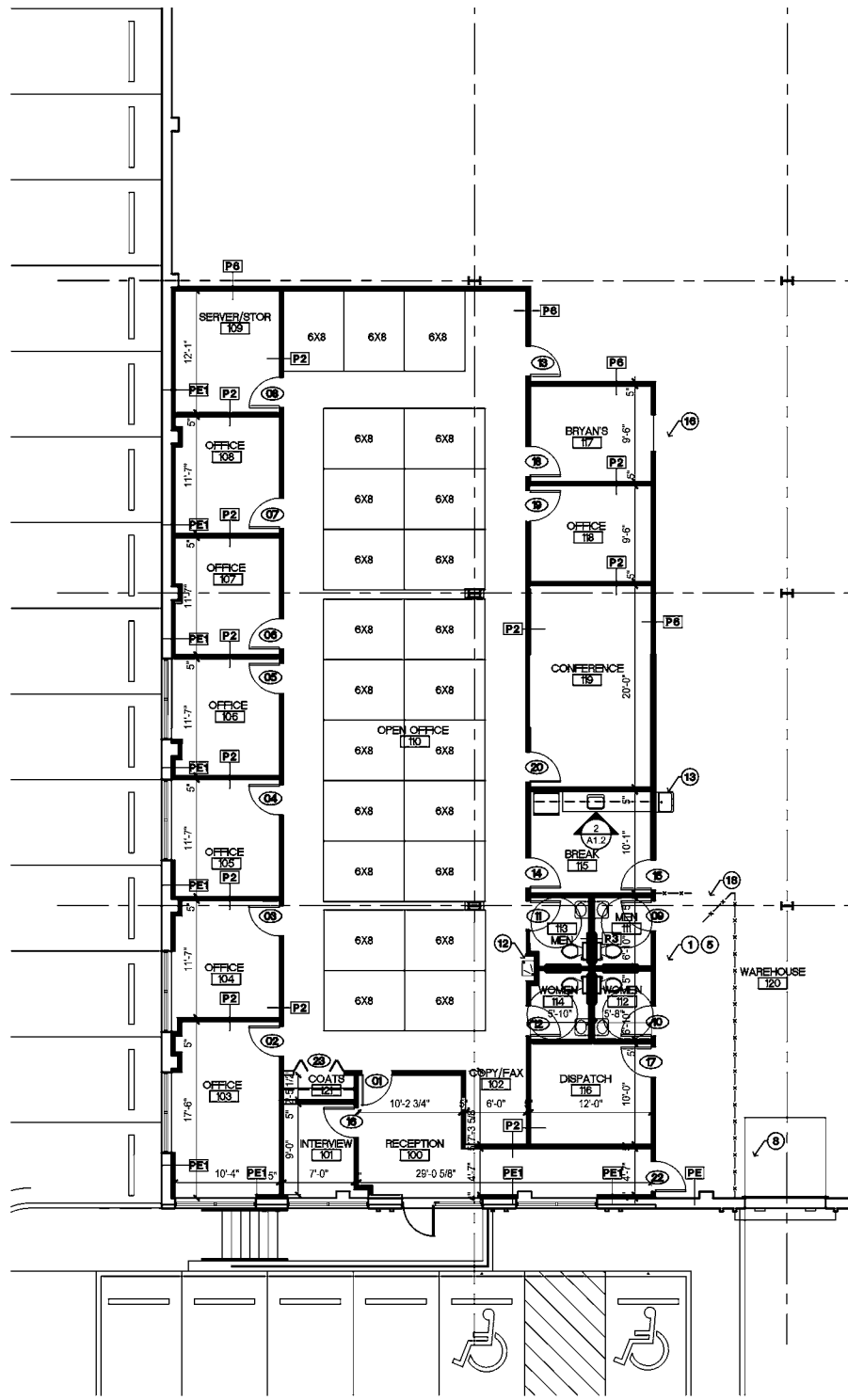
BLOCK
REAL ESTATE SERVICES, LLC

Paseo Industrial Park

Located at 1600-1840 Vernon Street, 1925 Bedford Avenue

For Lease

Floorplan Office Layout – 1600 Vernon



Floorplan Office Layout – 1840 Vernon

