

RETAIL DEVELOPMENT



MID-AMERICA®
Real Estate-Michigan, Inc.

JOIN T-MOBILE &
DOMINO'S

SEC Vernor Highway & Dragoon Street / Detroit, MI

AVAILABLE
2,500 SF



RETAIL OPPORTUNITY

RETAIL DEVELOPMENT



Address

SEC Vernor Highway & Dragoon Street
Detroit, MI 48207

Availability

2,500 SF

Features

- Join T-Mobile and Domino's in this recently developed multi-tenant retail center located on the southwest corner of Vernor Highway and Dragoon Street at a signalized intersection, in southwest Detroit.
- 2,500 SF endcap available for lease in landlord's "white box" condition.
- Pylon signage available.
- Contact broker for asking rents.

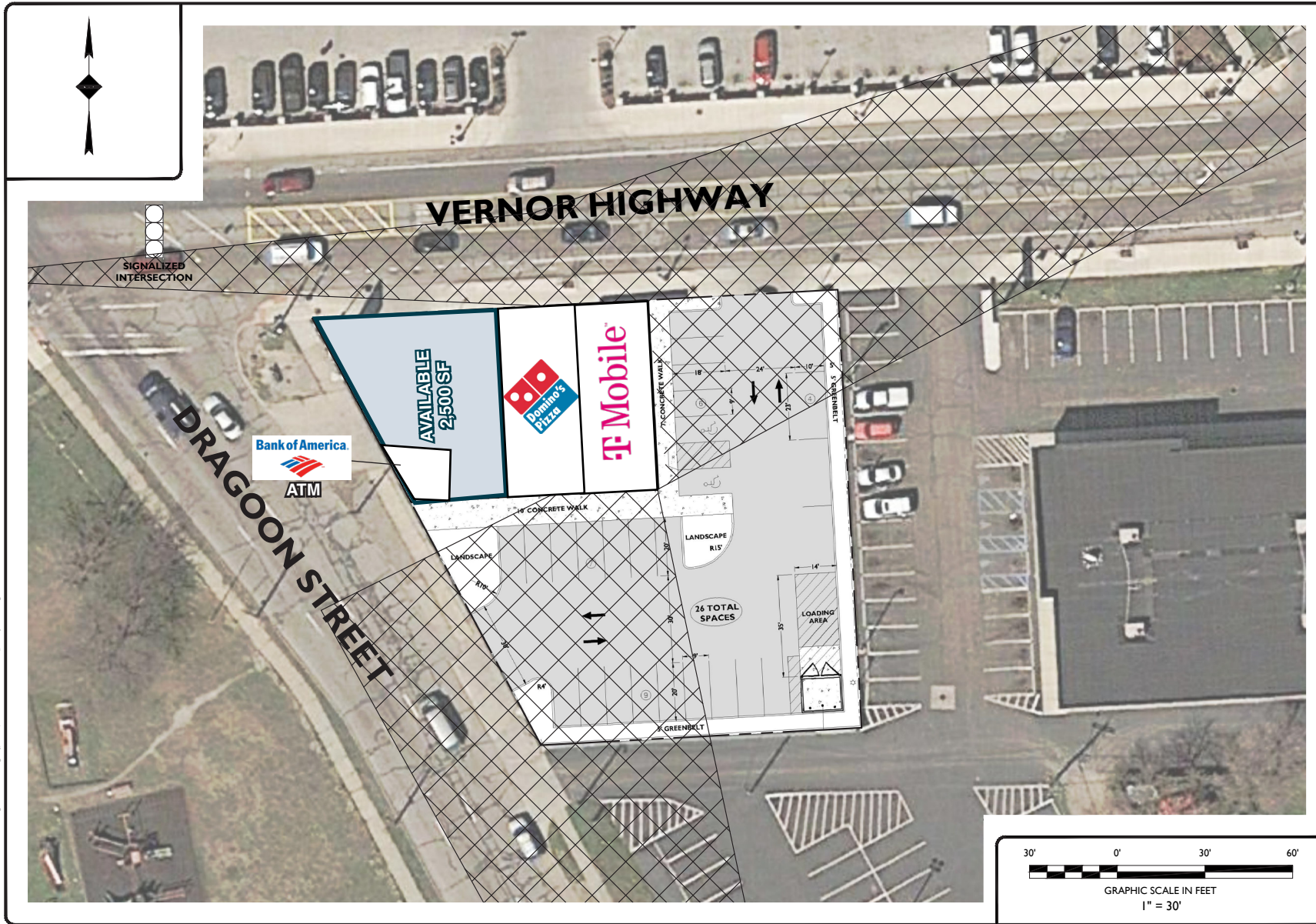
Area Tenants



Demographics (2024)

	1 MILE	3 MILES	5 MILES
POPULATION	17,565	75,095	254,717
HOUSEHOLDS	5,784	26,276	100,641
AVG HOUSEHOLD INCOME	\$54,587	\$59,783	\$62,444
DAYTIME POPULATION	15,746	91,564	377,663

RETAIL DEVELOPMENT



STONEFIELD
engineering & design
Royal Oak, MI • Long Island City, NY • Rutherford, NJ
www.stonefielddesign.com
28154 Woodward Avenue Royal Oak, MI 48067
Phone 248.247.1115

ALRIG USA
3000 TELEGRAPH ROAD, SUITE 205
BRIGHTON PARK, MI 4803
OFFICE: 248.646.9999
FAX: 248.646.9796

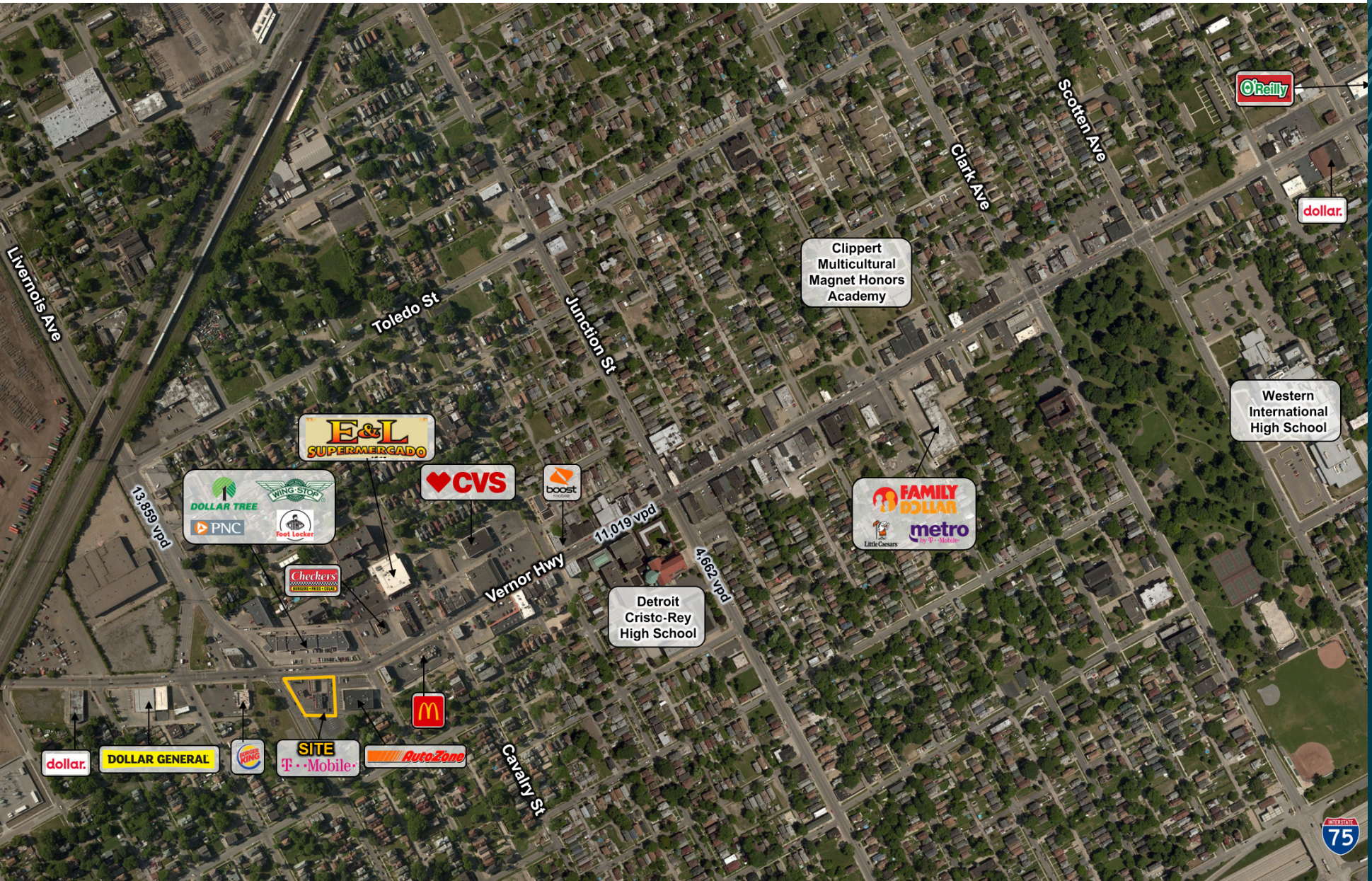
DEVELOPER:
PROPOSED MULTI-TENANT BUILDING
T-MOBILE AND RETAIL
PARCEL ID: 16000701-LS
16000701-LS VERNOR HIGHWAY
CITY OF DETROIT
WAYNE COUNTY, MICHIGAN

DRAFT
BY PONTON

NOT APPROVED FOR CONSTRUCTION
DRAWN BY: JD
CHECKED BY: HPH
DATE: 06/22/2017
SCALE: (H) 1" = 30'

PROJECT ID: M-17152
TITLE:
CONCEPT C
SHEET:
C-1

RETAIL DEVELOPMENT



RETAIL DEVELOPMENT



Gabe Schuchman

Mid-America Real Estate -
Michigan, Inc.

T: 248.855.6800

GSchuchman@MidAmericaGrp.com



38500 Woodward Ave, Suite 100
Bloomfield Hills, Michigan 48304
248.855.6800

MidAmericaGrp.com

Developed By:



CONTACT