

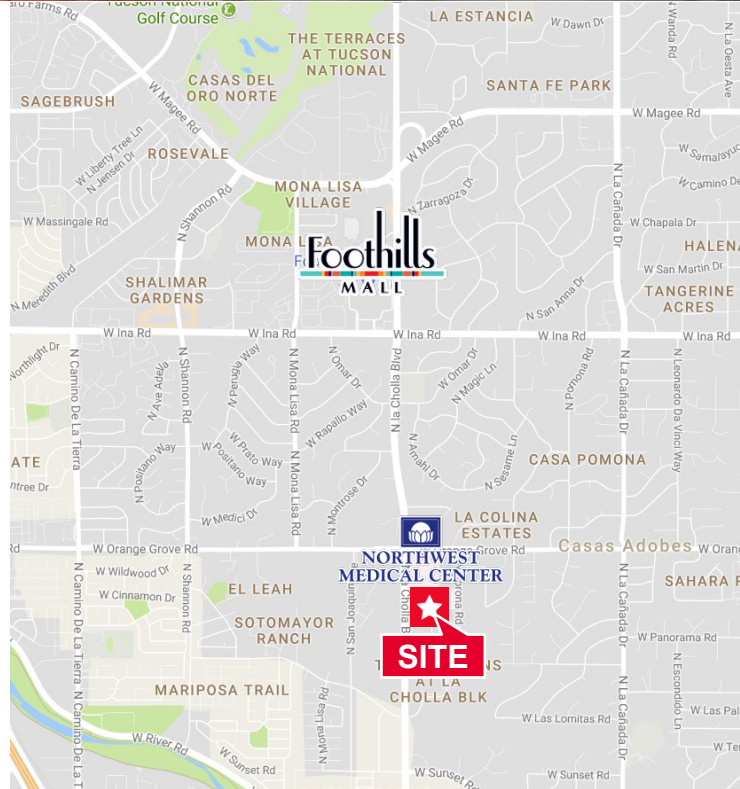


**MEDICAL**

**Lease Rate: \$22.00 – \$28.00/SF, NNN**  
**Available: 1,002 - 8,848 SF**

**Property Highlights**

- Outstanding Northwest location - on Northwest Medical Center
- Negotiable **Improvement Allowance**
- Quality medical offices
- Outstanding access
- Abundant at-door parking



**Available Suites**

111	8,848 SF Immediately Available
220	1,002 SF
225	1,712 SF with 30-day notice
250A	2,567 SF
240	2,288 Available 5/1/2024
270	4,040 SF

**Ryan McGregor**  
Commercial Properties  
+1 520 546 2748  
rmcgregor@picor.com

**PICOR Commercial Real Estate Services**  
5151 W Broadway Blvd Suite 115  
Tucson, Arizona 85711  
phone: +1 520 748 7100  
picor.com

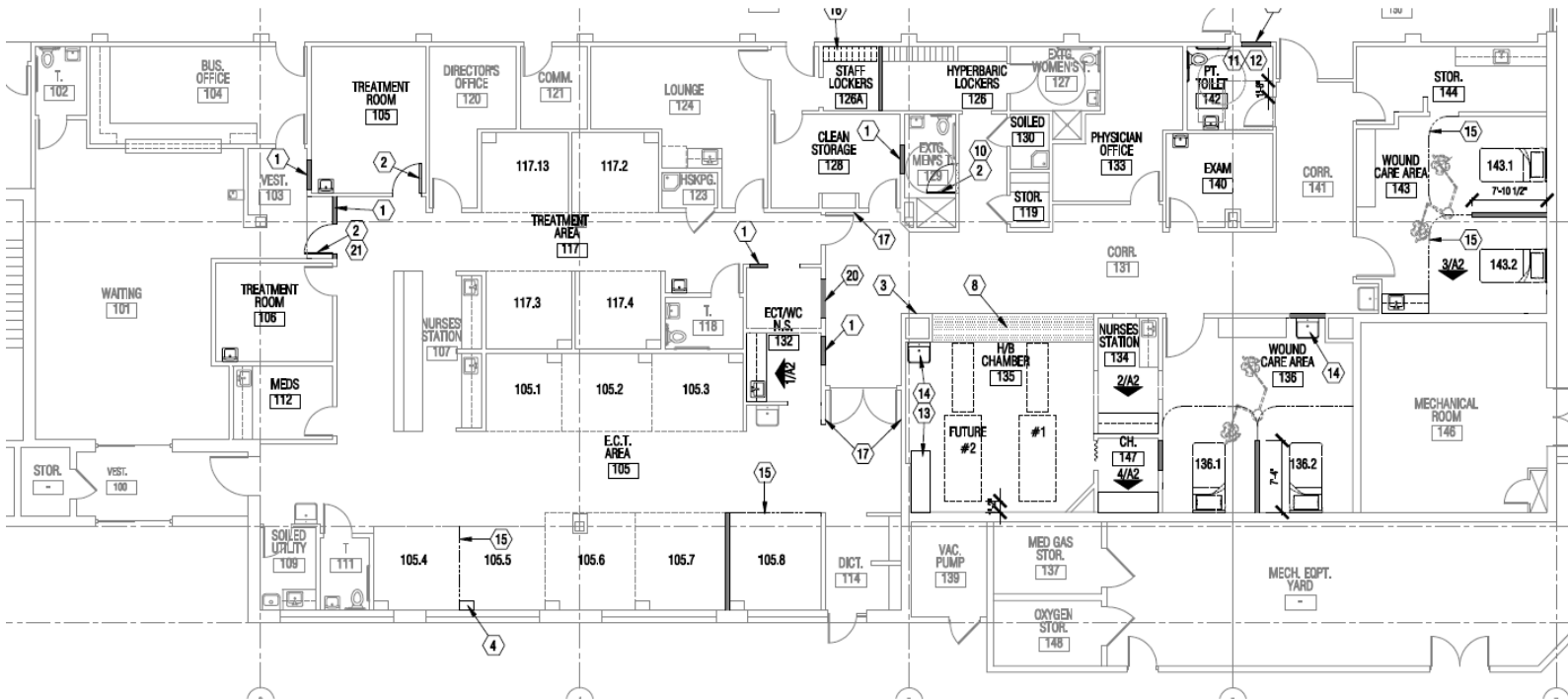
*Independently Owned and Operated / A Member of the Cushman & Wakefield Alliance*  
Cushman & Wakefield Copyright 2022. No warranty or representation, express or implied, is made to the accuracy or completeness of the information contained herein, and same is submitted subject to errors, omissions, change of price, rental or other conditions, withdrawal without notice, and to any special listing conditions imposed by the property owner(s). As applicable, we make no representation as to the condition of the property (or properties) in question.  
3/28/2024

**Floor Plan**

Suite 111 - 8,848 SF

\$28/SF NNN

**MEDICAL**



**Ryan McGregor**  
Commercial Properties  
+1 520 546 2748  
[rmcgregor@picor.com](mailto:rmcgregor@picor.com)

**PICOR Commercial Real Estate Services**  
5151 E. Broadway Blvd, Suite 115  
Tucson, Arizona 85711  
phone: +1 520 748 7100  
[picor.com](http://picor.com)

*Independently Owned and Operated / A Member of the Cushman & Wakefield Alliance*

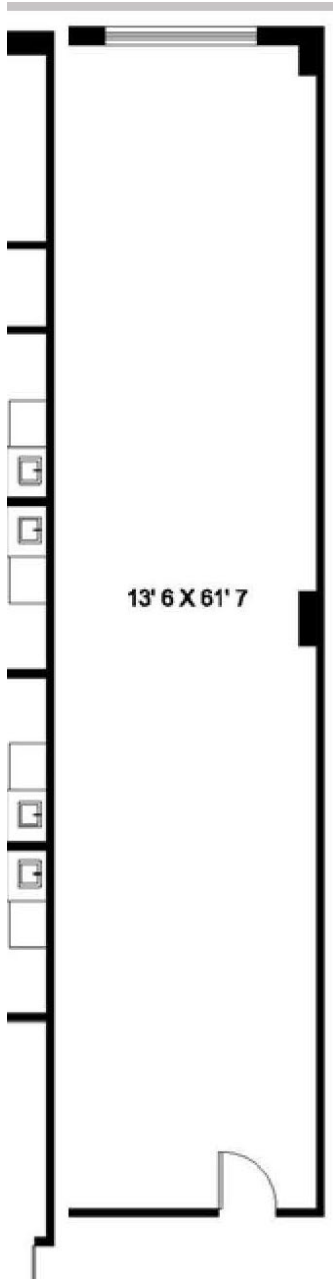
Cushman & Wakefield Copyright 2022. No warranty or representation, express or implied, is made to the accuracy or completeness of the information contained herein, and same is submitted subject to errors, omissions, change of price, rental or other conditions, withdrawal without notice, and to any special listing conditions imposed by the property owner(s). As applicable, we make no representation as to the condition of the property (or properties) in question.

3/28/2024

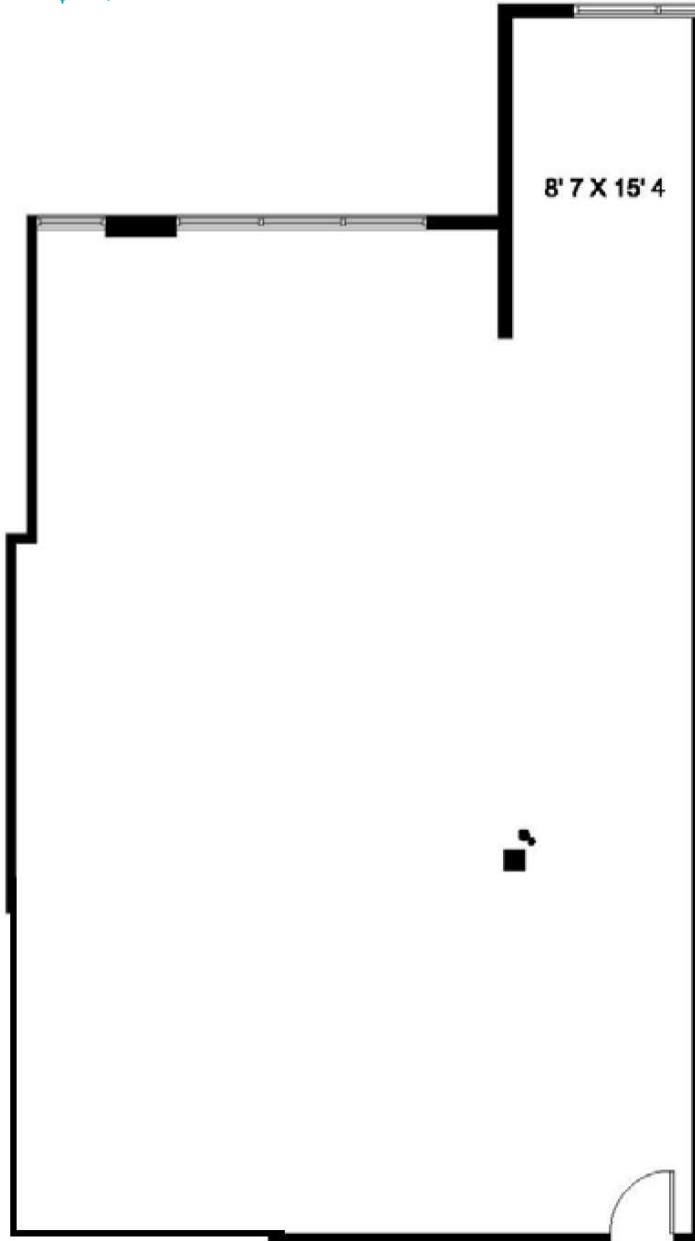
**Floor Plan**

**MEDICAL**

Suite 220 - 1,002 SF  
\$22/SF NNN



Suite 225 - 1,712 SF  
\$22/SF NNN



**Ryan McGregor**  
Commercial Properties  
+1 520 546 2748  
[rmcgregor@picor.com](mailto:rmcgregor@picor.com)

**PICOR Commercial Real Estate Services**  
5151 E. Broadway Blvd, Suite 115  
Tucson, Arizona 85711  
phone: +1 520 748 7100  
[picor.com](http://picor.com)

*Independently Owned and Operated / A Member of the Cushman & Wakefield Alliance*

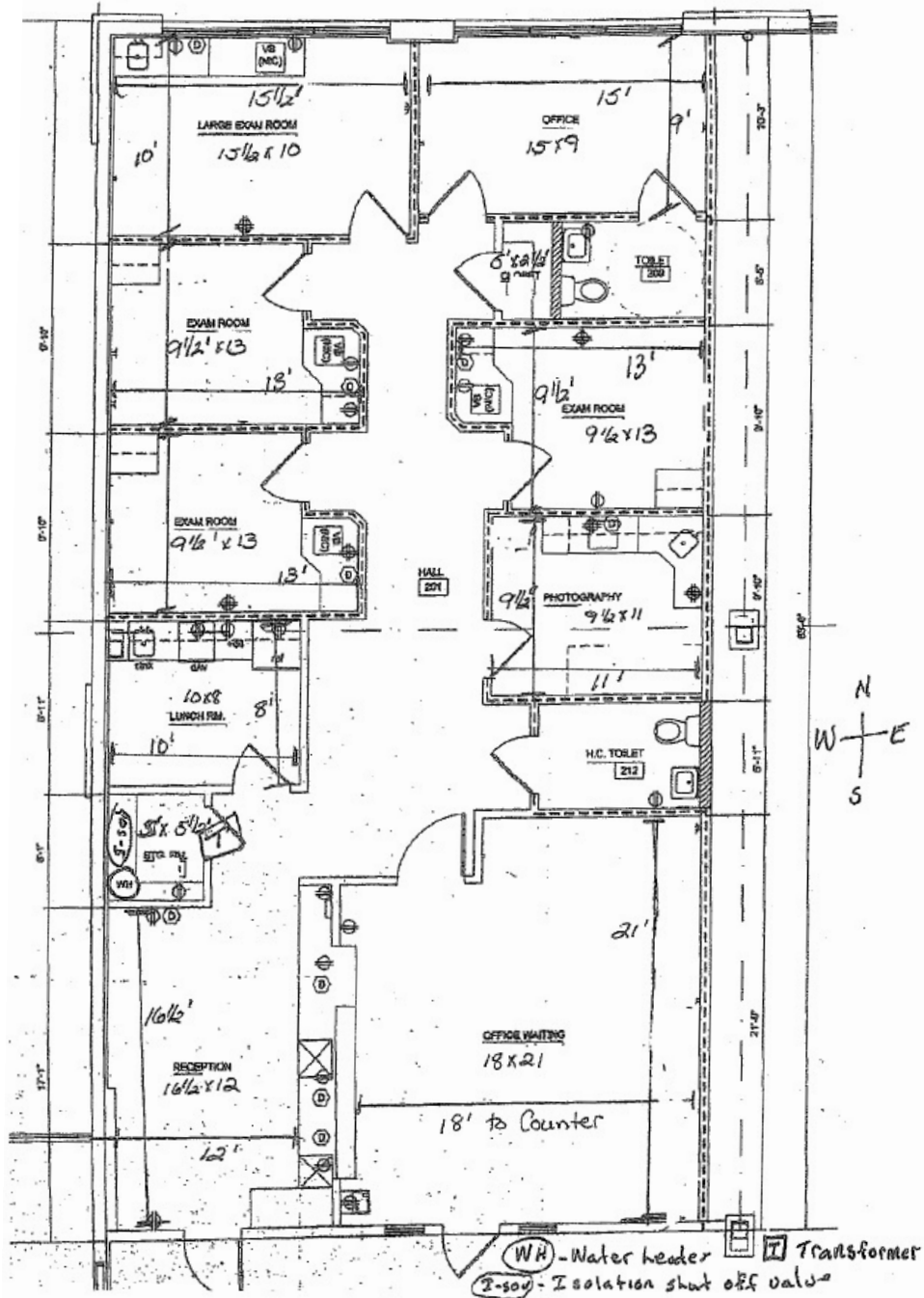
Cushman & Wakefield Copyright 2022. No warranty or representation, express or implied, is made to the accuracy or completeness of the information contained herein, and same is submitted subject to errors, omissions, change of price, rental or other conditions, withdrawal without notice, and to any special listing conditions imposed by the property owner(s). As applicable, we make no representation as to the condition of the property (or properties) in question.

3/28/2024

**Floor Plan**

Suite 240 – 2,288 SF  
\$22/SF NNN

**MEDICAL**



Ryan McGregor  
Commercial Properties  
+1 520 546 2748  
rmcgregor@picor.com

PICOR Commercial Real Estate Services  
5151 E. Broadway Blvd, Suite 115  
Tucson, Arizona 85711  
phone: +1 520 748 7100  
picor.com

Independently Owned and Operated / A Member of the Cushman & Wakefield Alliance

Cushman & Wakefield Copyright 2022. No warranty or representation, express or implied, is made to the accuracy or completeness of the information contained herein, and same is submitted subject to errors, omissions, change of price, rental or other conditions, withdrawal without notice, and to any special listing conditions imposed by the property owner(s). As applicable, we make no representation as to the condition of the property (or properties) in question.

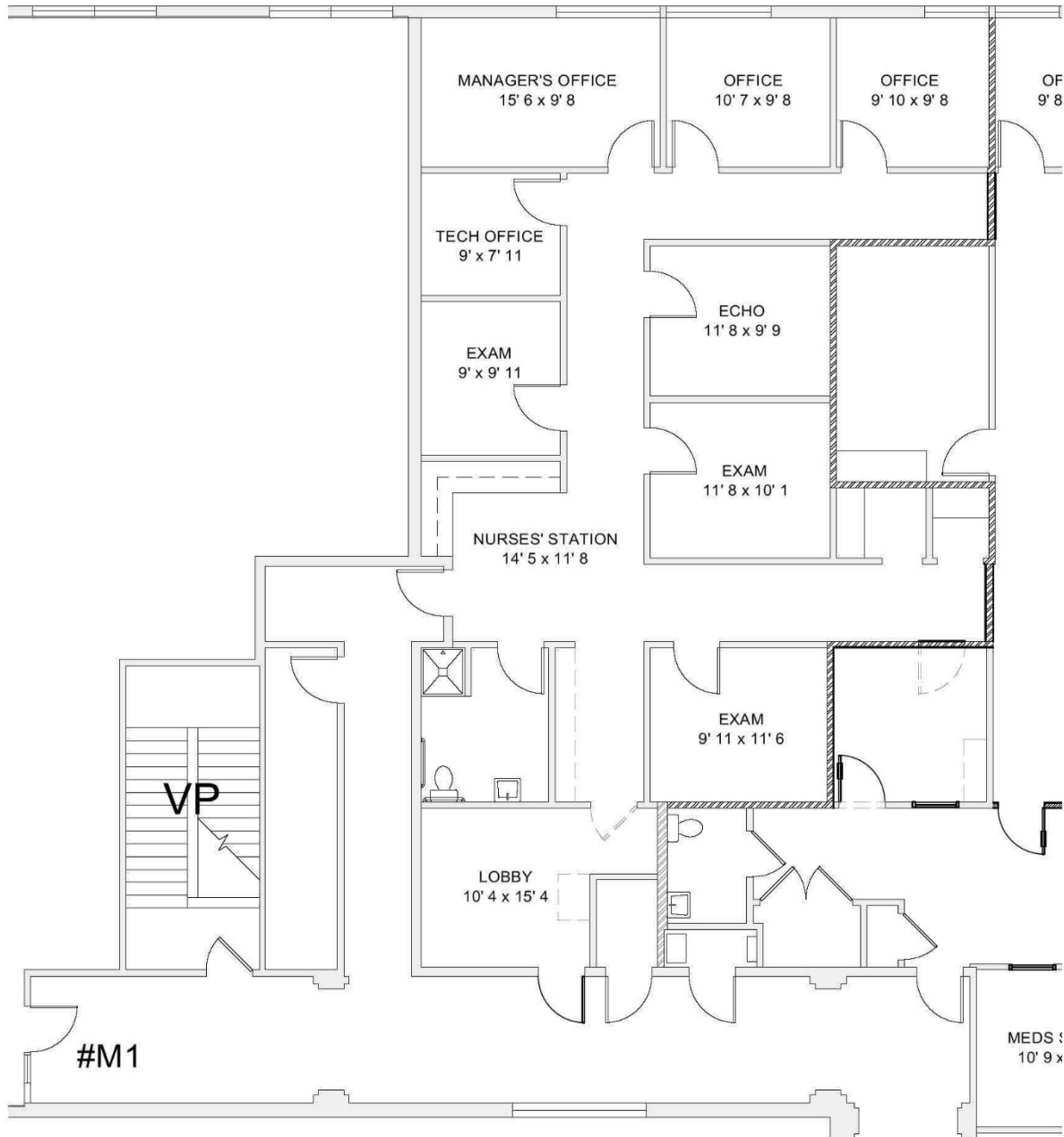
3/28/2024

**Floor Plan**

Suite 250A - 2,567 SF

\$22/SF NNN

**MEDICAL**



**Ryan McGregor**  
Commercial Properties  
+1 520 546 2748  
[rmcgregor@picor.com](mailto:rmcgregor@picor.com)

**PICOR Commercial Real Estate Services**  
5151 E. Broadway Blvd, Suite 115  
Tucson, Arizona 85711  
phone: +1 520 748 7100  
[picor.com](http://picor.com)

*Independently Owned and Operated / A Member of the Cushman & Wakefield Alliance*

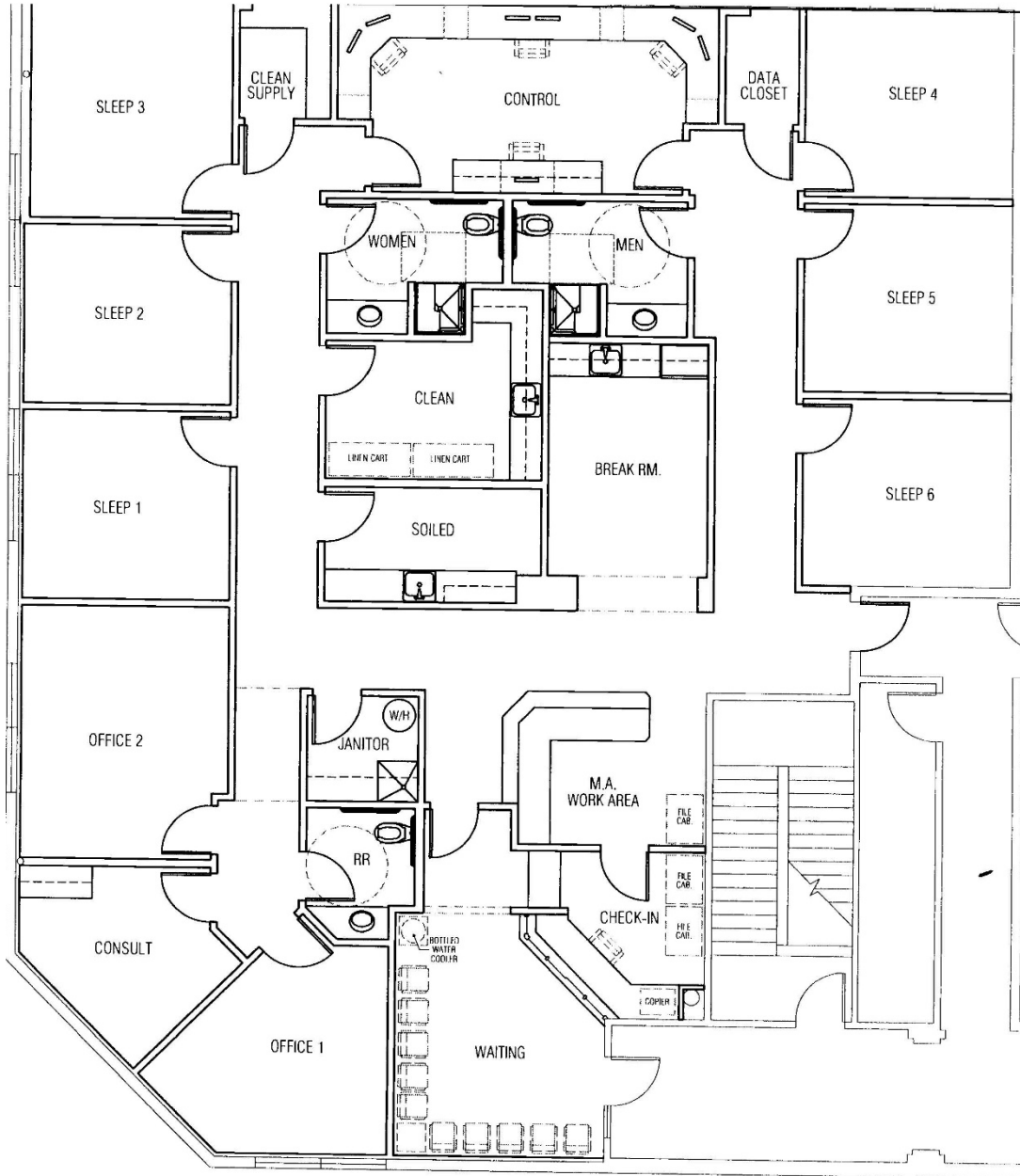
Cushman & Wakefield Copyright 2022. No warranty or representation, express or implied, is made to the accuracy or completeness of the information contained herein, and same is submitted subject to errors, omissions, change of price, rental or other conditions, withdrawal without notice, and to any special listing conditions imposed by the property owner(s). As applicable, we make no representation as to the condition of the property (or properties) in question.

3/28/2024

**Floor Plan**

**MEDICAL**

Suite 270 - 4,040 SF  
\$22/SF NNN



Ryan McGregor  
Commercial Properties  
+1 520 546 2748  
[rmcgregor@picor.com](mailto:rmcgregor@picor.com)

**PICOR Commercial Real Estate Services**  
5151 E. Broadway Blvd, Suite 115  
Tucson, Arizona 85711  
phone: +1 520 748 7100  
[picor.com](http://picor.com)



*Independently Owned and Operated / A Member of the Cushman & Wakefield Alliance*

Cushman & Wakefield Copyright 2022. No warranty or representation, express or implied, is made to the accuracy or completeness of the information contained herein, and same is submitted subject to errors, omissions, change of price, rental or other conditions, withdrawal without notice, and to any special listing conditions imposed by the property owner(s). As applicable, we make no representation as to the condition of the property (or properties) in question.

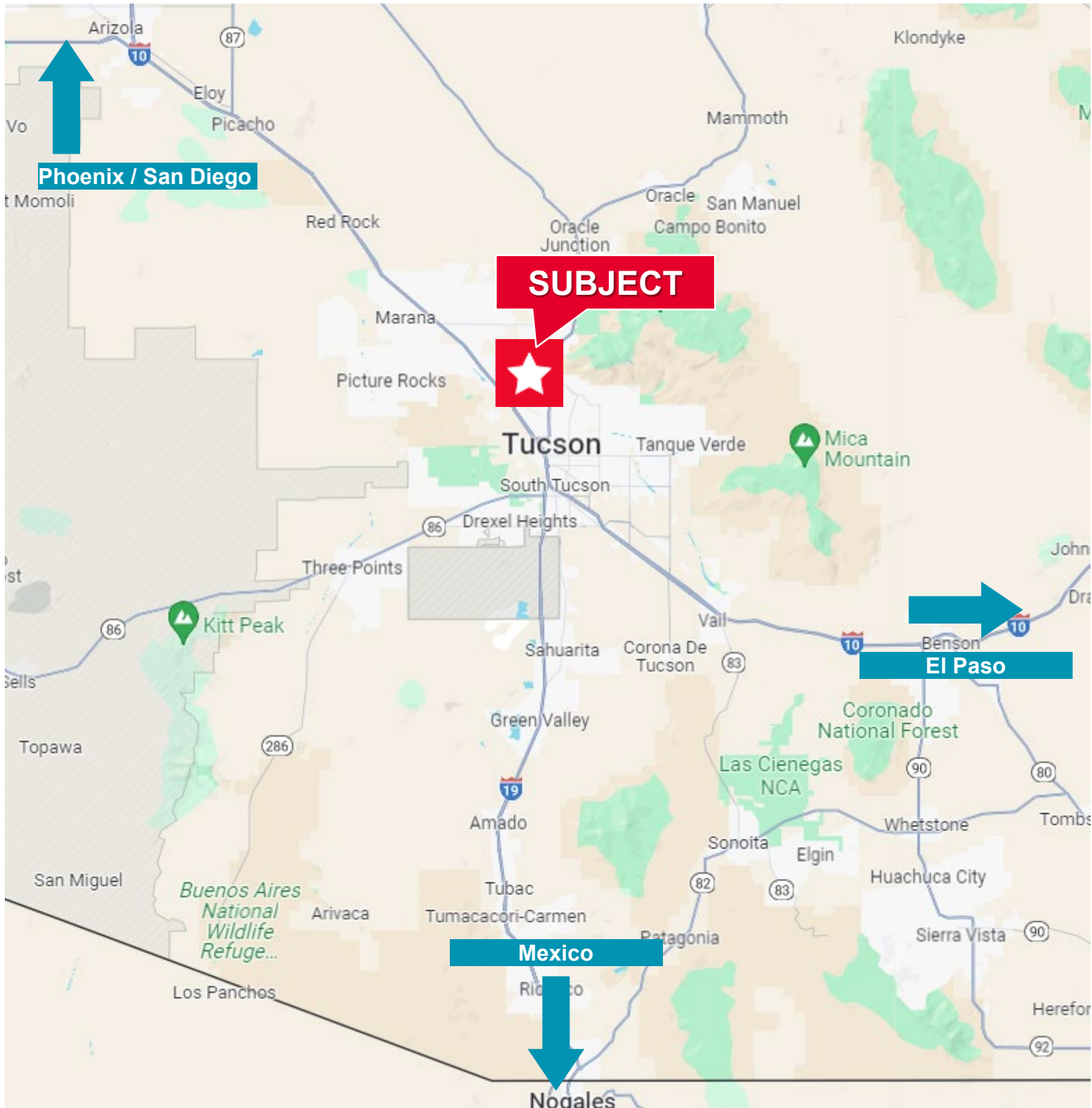
3/28/2024



FOR LEASE

# La Cholla Medical Plaza

6130 N. La Cholla Boulevard  
Tucson, Arizona 85741



Independently Owned and Operated / A Member of the Cushman & Wakefield Alliance

Cushman & Wakefield Copyright 2022. No warranty or representation, express or implied, is made to the accuracy or completeness of the information contained herein, and same is submitted subject to errors, omissions, change of price, rental or other conditions, withdrawal without notice, and to any special listing conditions imposed by the property owner(s). As applicable, we make no representation as to the condition of the property (or properties) in question.

3/28/2024