

930 E Boot Road  
West Chester, PA

FOR LEASE



Jessi Ayoub

484-459-0557

[jayoub@liebermanearley.com](mailto:jayoub@liebermanearley.com)

[www.liebermanearley.com](http://www.liebermanearley.com) | 610-688-4300

**LIEBERMAN EARLEY & COMPANY**

The Meadows - 485 Devon Park Drive, Suite 110, Wayne, PA 19087

# EXECUTIVE SUMMARY

930 E Boot Road  
West Chester, PA

Suite 300

1,917 SF

## BUILDING DESCRIPTION:

- Multi-tenant building with private entry space
- Onsite security system
- Public utilities
- Professionally landscaped
- Great location near Routes 100 and 202
- Just minutes from West Chester and Exton amenities, restaurants, restaurants and entertainment

## SUITE FEATURES:

- 2 floors with windows, vaulted ceilings, and abundant lighting
- Charming open floor plan, private office, 2 ADA bathrooms and kitchenette in unit
- Signage available—building and pylon along Boot Road
- Onsite security system



**LEASE PRICE:**

\$15/SF NNN

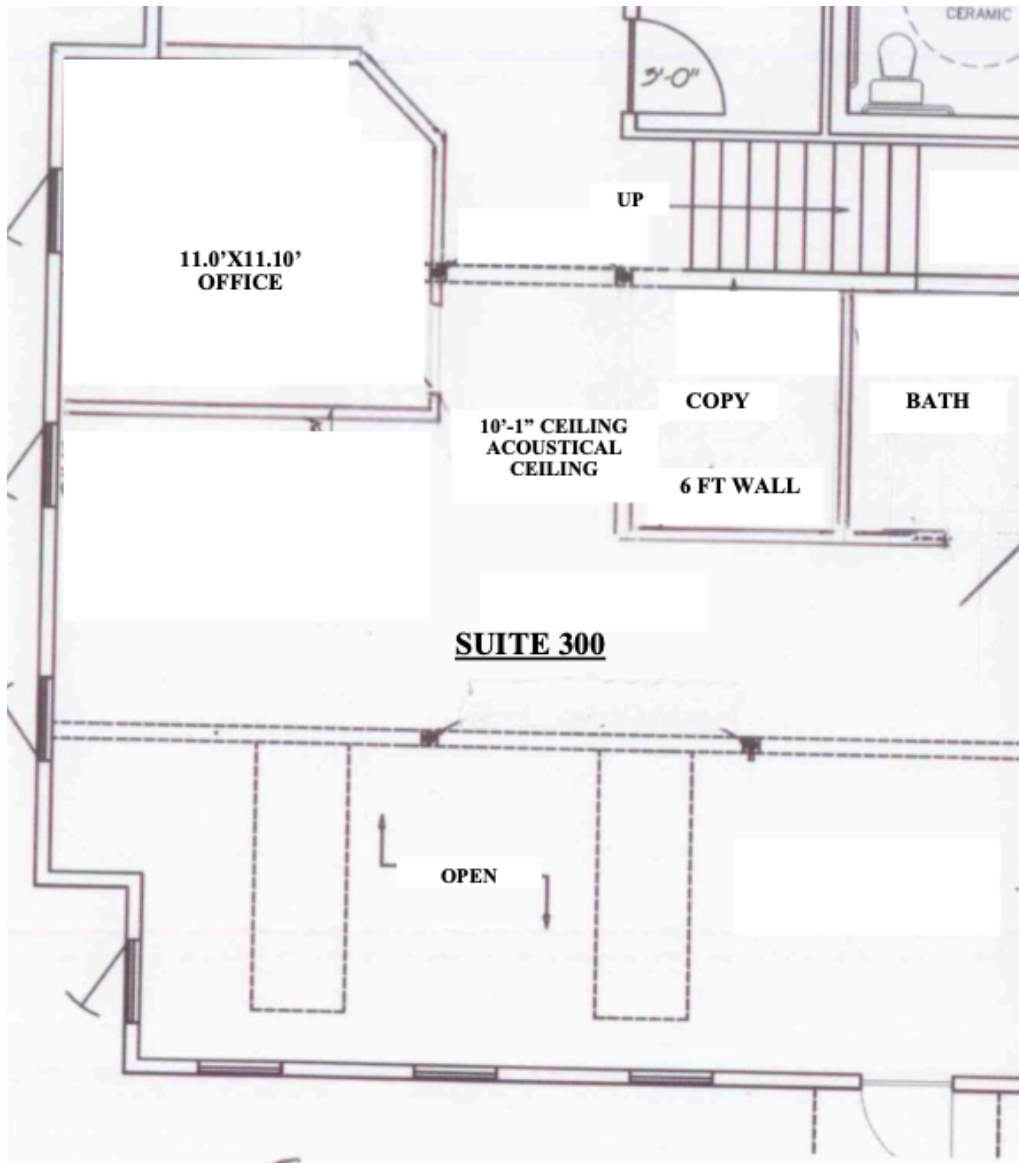
NNN FEES: \$6.50/SF

## Disclaimer

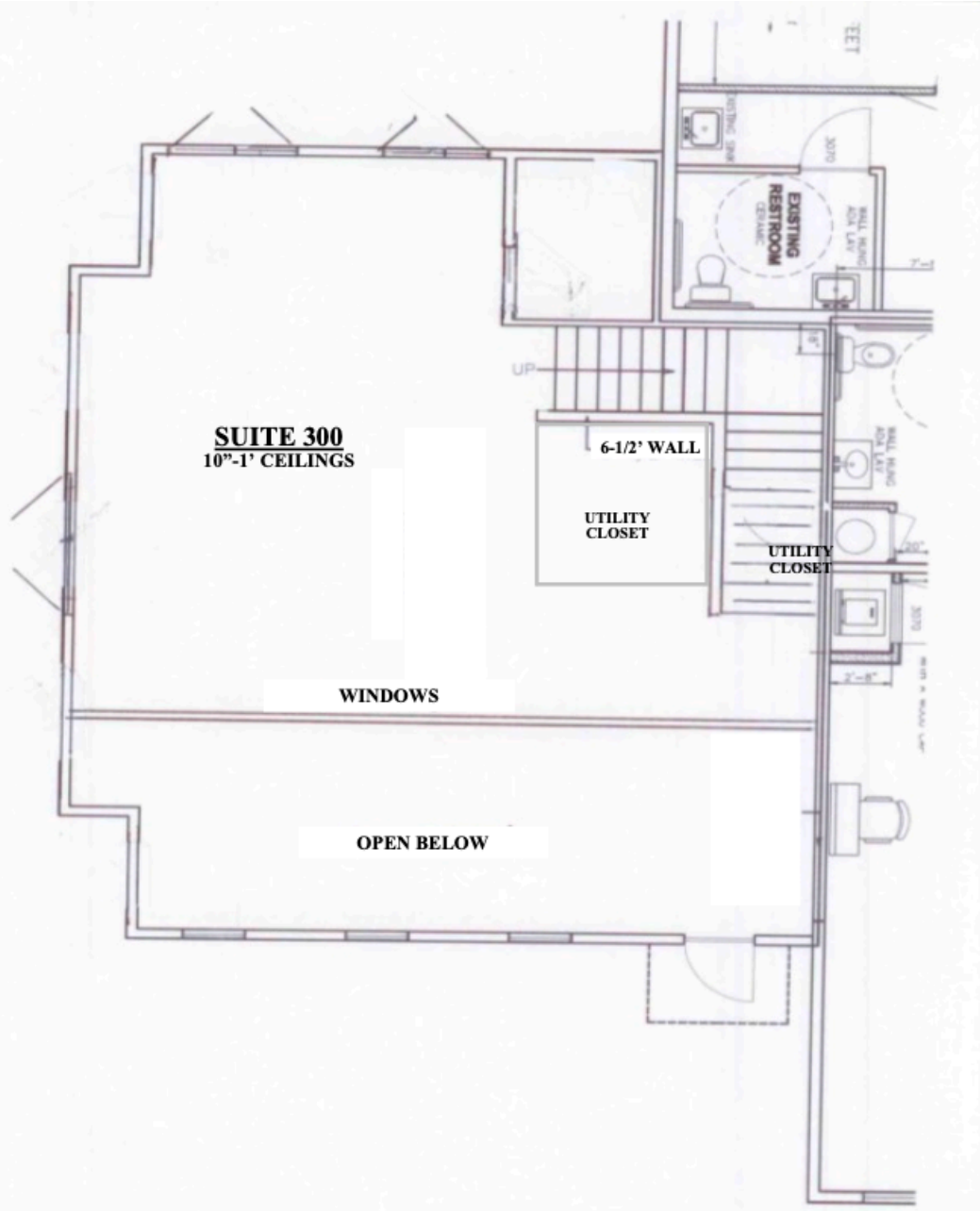
Information contained herein has been obtained from the owner of the property or from sources deemed reliable. We have no reason to doubt its accuracy but make no warranty or representation. All information is submitted subject to errors, omissions, change, withdrawal without notice and any special listing conditions of the owner.

# FLOOR PLAN

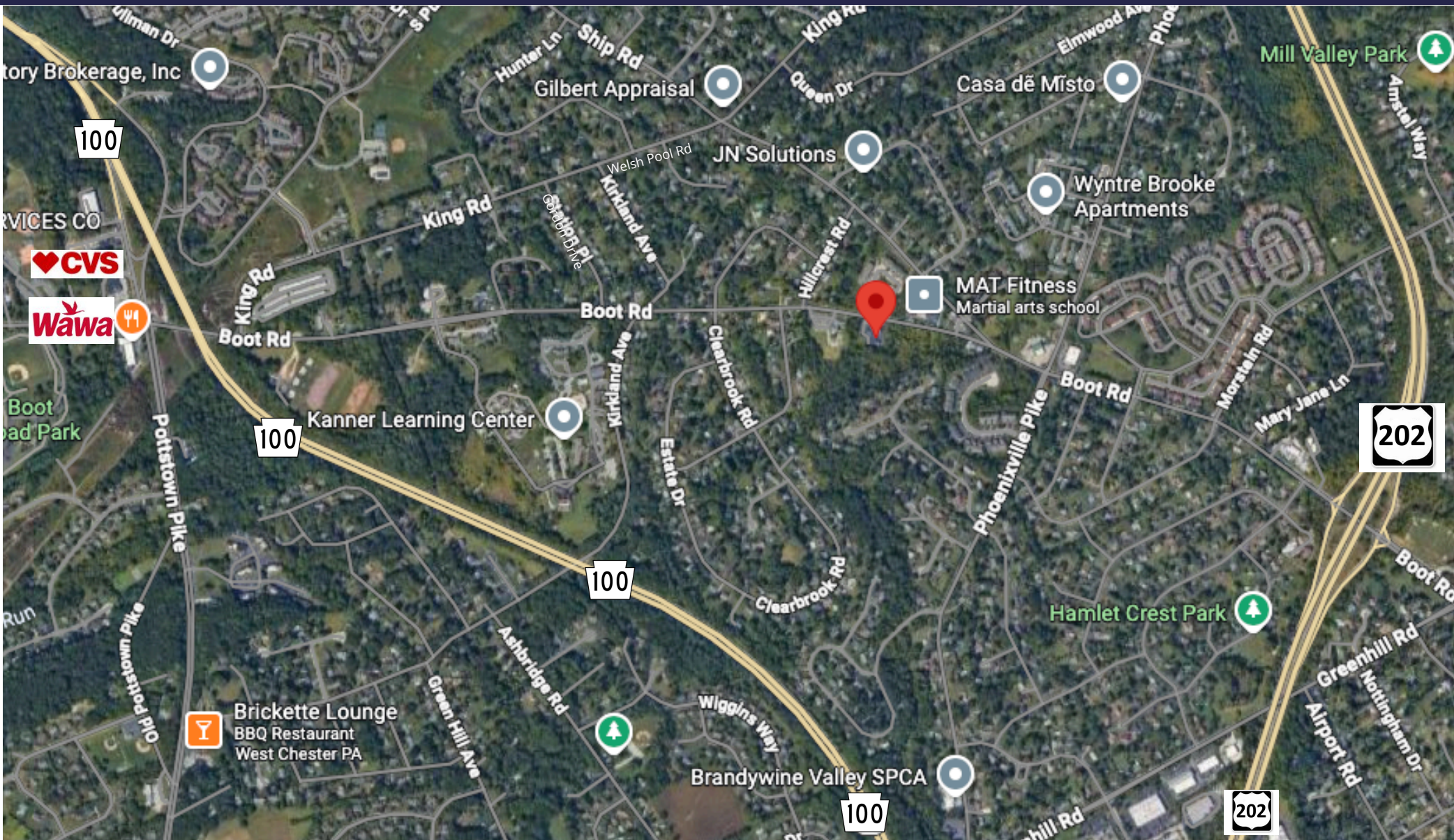
## 1ST FLOOR



## 2ND FLOOR



# LOCATION HIGHLIGHTS / SITE MAP



- ▶▶▶ This building is located near Routes 202 and 100
- ▶▶▶ Adjacent to 5 acre development and across the street from retail center, Ship Village
- ▶▶▶ Close amenities such as CVS and Wawa
- ▶▶▶ Minutes away from Exton Town Center

# INTERIOR PHOTOS

