

For Sale

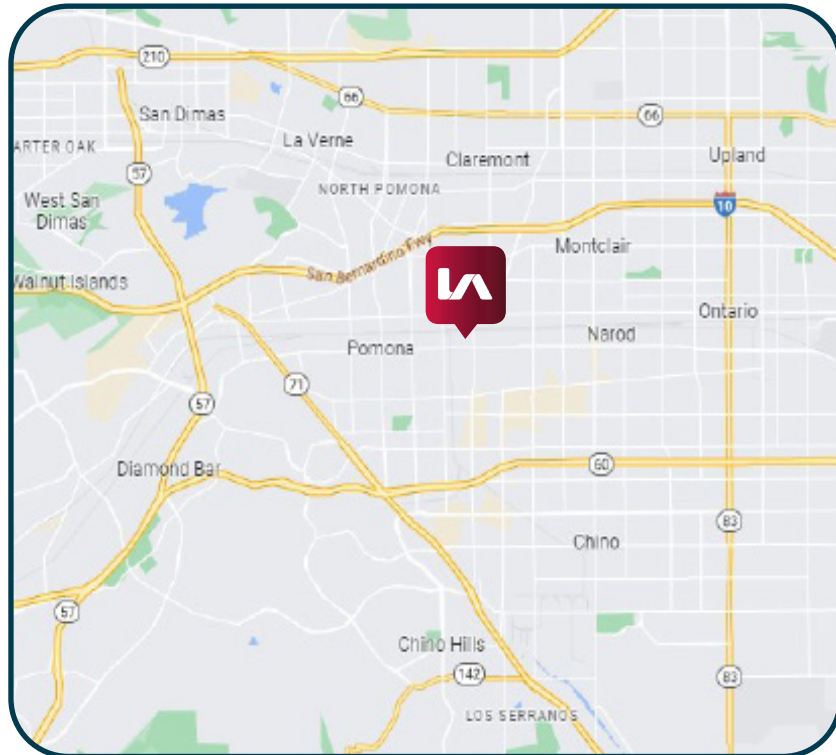
205 Hershey Street
Pomona, CA

4% Procuring
Fee for a deal by
8/31/2024!!!!



PROPERTY FEATURES

- ±9,500 SF Building Situated on ±0.43 Acre Lot
- 12' Clear Height
- 1 Dock Position 10'x12' Door
- 1 Ground Level Door w/ Ramp
- 3 Offices with Reception Lobby
- Amps 100 (Verify)
- Zoning is M-1
- Clear Span



FOR MORE INFORMATION PLEASE CONTACT:

Herrick Johnson

Senior Vice President

D 951.276.3632

hjohnson@lee-associates.com

DRE #01013436

Ryan Earnhart

Senior Vice President

D 909.373.2724

rearnhart@lee-assoc.com

DRE #01426559

 **LEE &
ASSOCIATES**

COMMERCIAL REAL ESTATE SERVICES

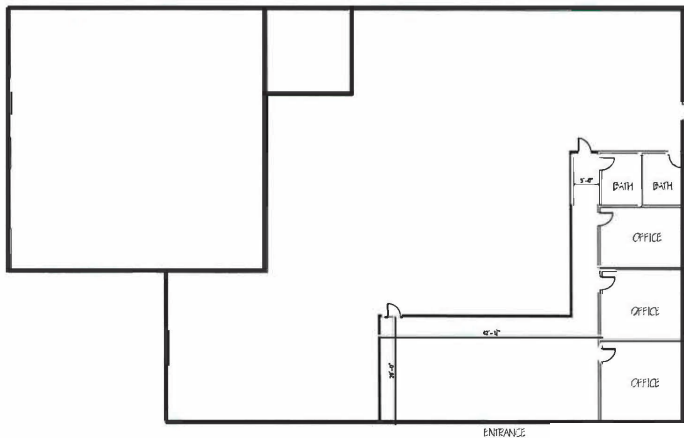
Lee & Associates® - Ontario

3535 Inland Empire Blvd, Ontario, CA 91764

909.989.7771 | lee-assoc.com

Corp ID 00976995

Site Plan



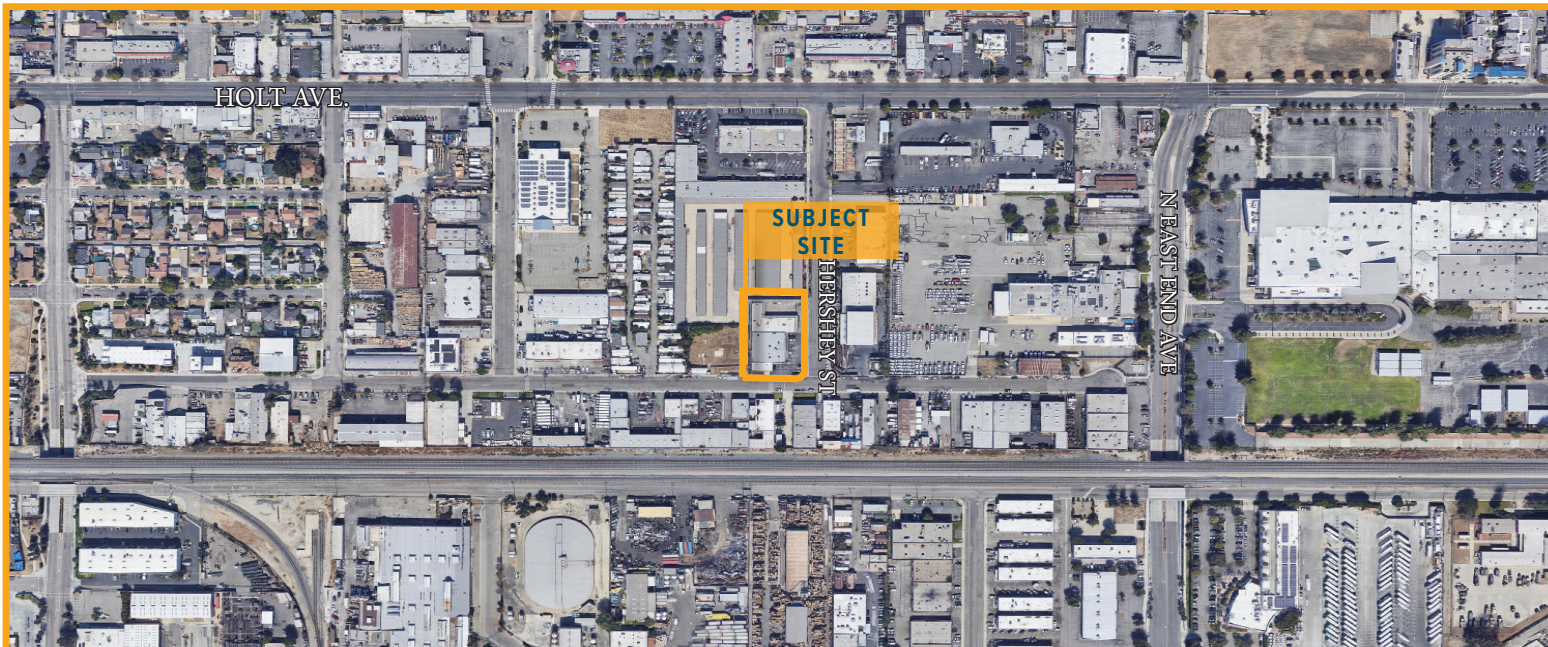
PROPOSED FLOOR PLAN



205 HERSHEY ST. POMONA, CA 91767
FLOOR PLAN



A1.5



FOR MORE INFORMATION PLEASE CONTACT:

Herrick Johnson

Senior Vice President

D 951.276.3632

hjohnson@lee-associates.com

DRE #01013436

Ryan Earnhart

Senior Vice President

D 909.373.2724

rearnhart@lee-assoc.com

DRE #01426559



COMMERCIAL REAL ESTATE SERVICES

Lee & Associates® - Ontario

3535 Inland Empire Blvd, Ontario, CA 91764

909.989.7771 | lee-assoc.com

Corp ID 00976995