

The Concourse
Outstanding Distribution Space
Central City of Industry
Location
Immediate Access to the (60)
Freeway



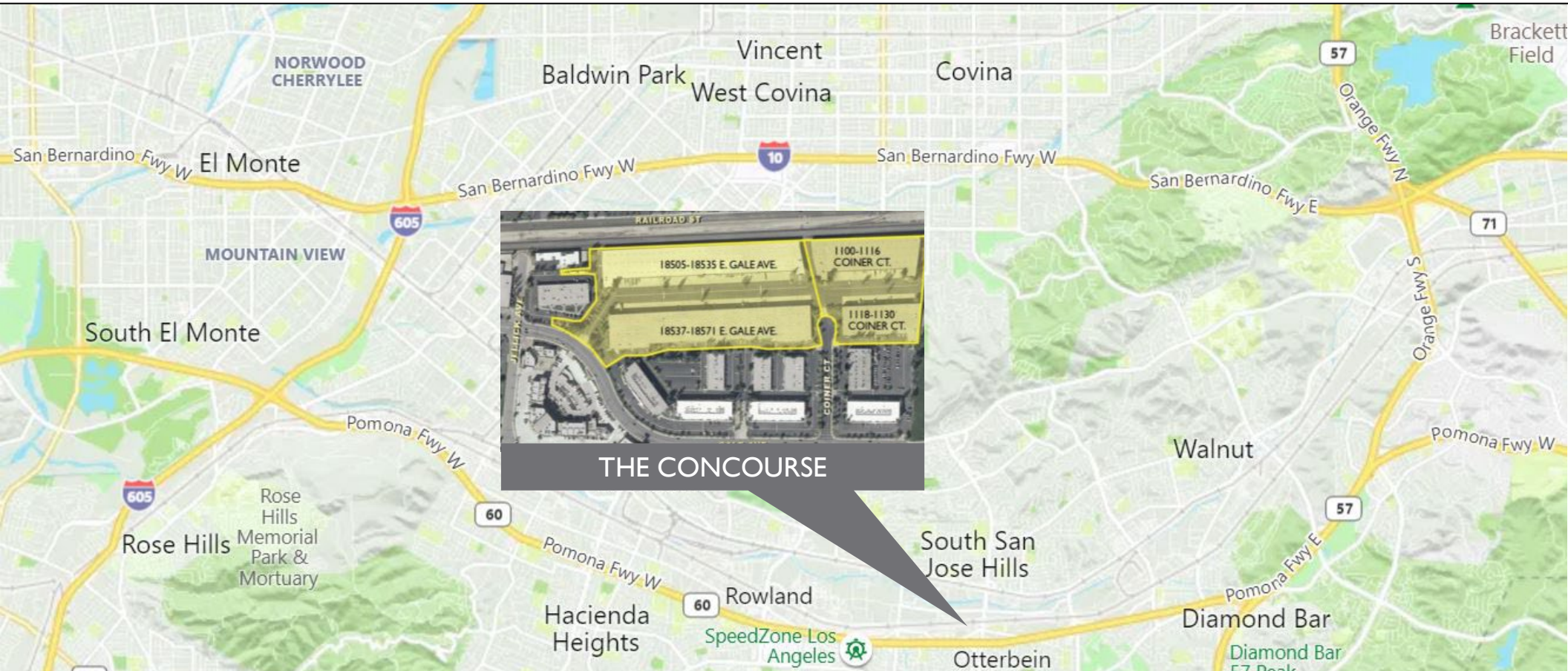
CITY OF INDUSTRY'S PREMIER CLASS-A BUSINESS PARK

THE CONCOURSE
City of Industry, CA



PROPERTY FEATURES

THE CONCOURSE



PROPERTY HIGHLIGHTS

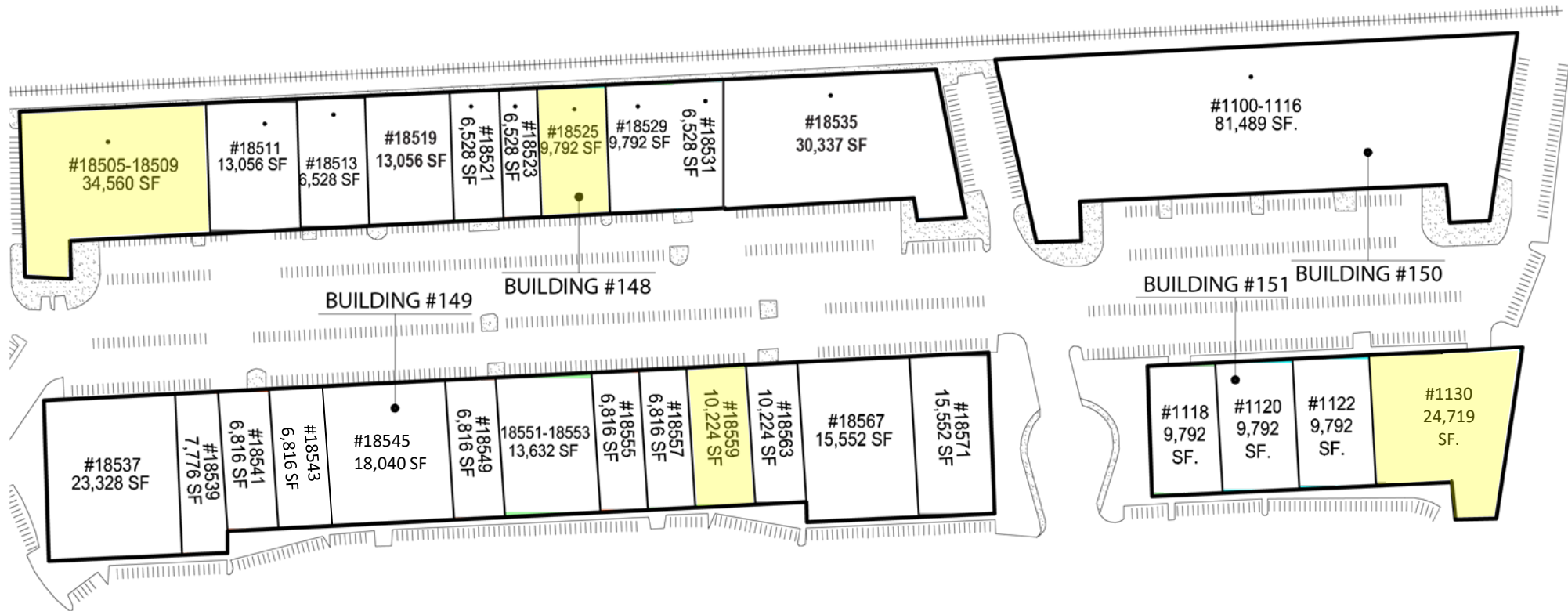
- A 420,697SF Class A Multitenant Park
- Rent Includes Base Year CAM
- Immediate (60) Freeway Access via Fullerton Road & Nogales Street
- Close Proximity to Retail Amenities
- 24' Minimum Clear Height
- Abundant Dock High Loading
- Large Truck Court (over 160 feet)

AVAILABLE UNITS

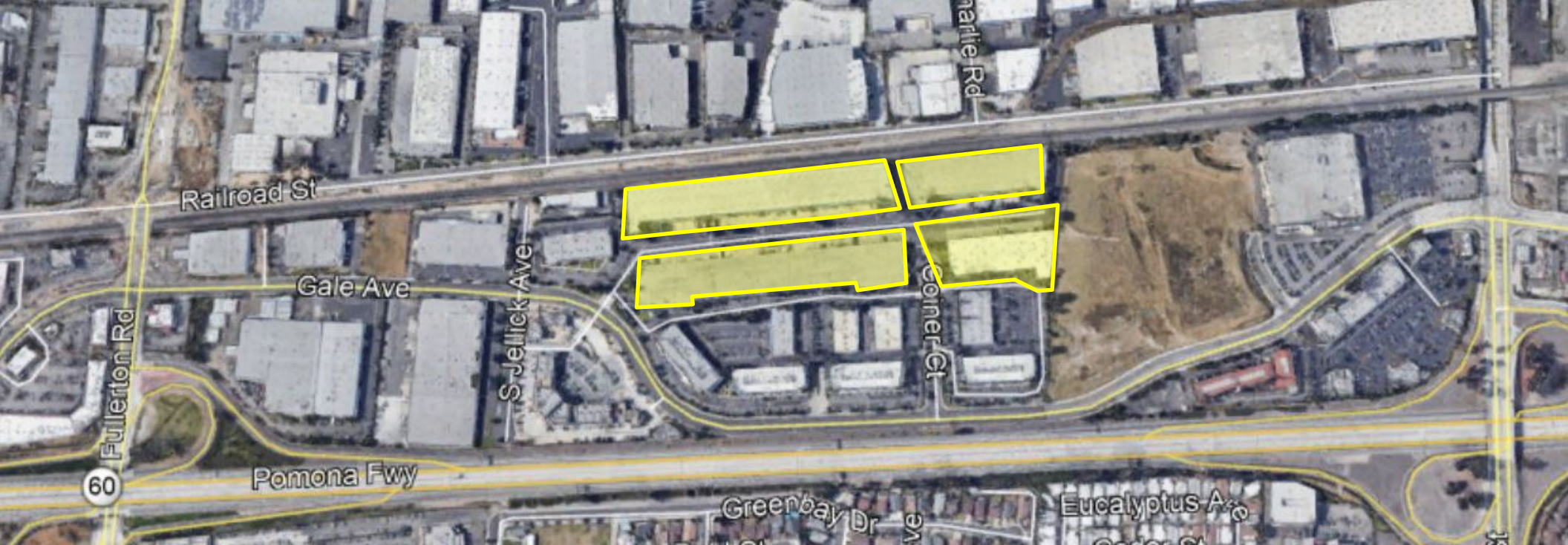
UNIT	SIZE	OFFICE	LOADING	AVAILABLE	PRICE
18505 E Gale Ave	34,560 SF	3,840 SF	7 DH, 1 GL	01/01/2025	TBD
1130 Coiner Ct	24,719 SF	5,109 SF	4 DH, 2 GL	NOW	TBD
18559 E Gale Ave	10,224 SF	2,252 SF	1 DH, 1 GL	NOW	TBD
18525 E Gale Ave	9,792 SF	1,427	1 DH, 1 GL	NOW	TBD

PROJECT SITE PLAN

THE
CONCOURSE



 AVAILABLE



LEASING CONTACTS

Chris Tolles

Executive Managing Director | Brokerage
+1 213 955 5129
christopher.tolles@cushwake.com
License: 01459899

Maya Schirn

Associate | Brokerage
+1 213 236 4931
maya.schirn@cushwake.com
License: 02237054

Erik Larson

Executive Managing Director | Brokerage
+1 213 955 5126
erik.larson@cushwake.com
License: 01213790



900 Wilshire Boulevard,
Suite, 2400
Los Angeles, CA 90017
+1 213 955 5100
License: 0061635 [Covid-19 Prevention Plan](#)

Cushman & Wakefield Copyright 2018. No warranty or representation, express or implied, is made to the accuracy or completeness of the information contained herein, and same is submitted subject to errors, omissions, change of price, rental or other conditions, withdrawal without notice, and to any special listing conditions imposed by the property owner(s). As applicable, we make no representation as to the condition of the property (or properties) in question.